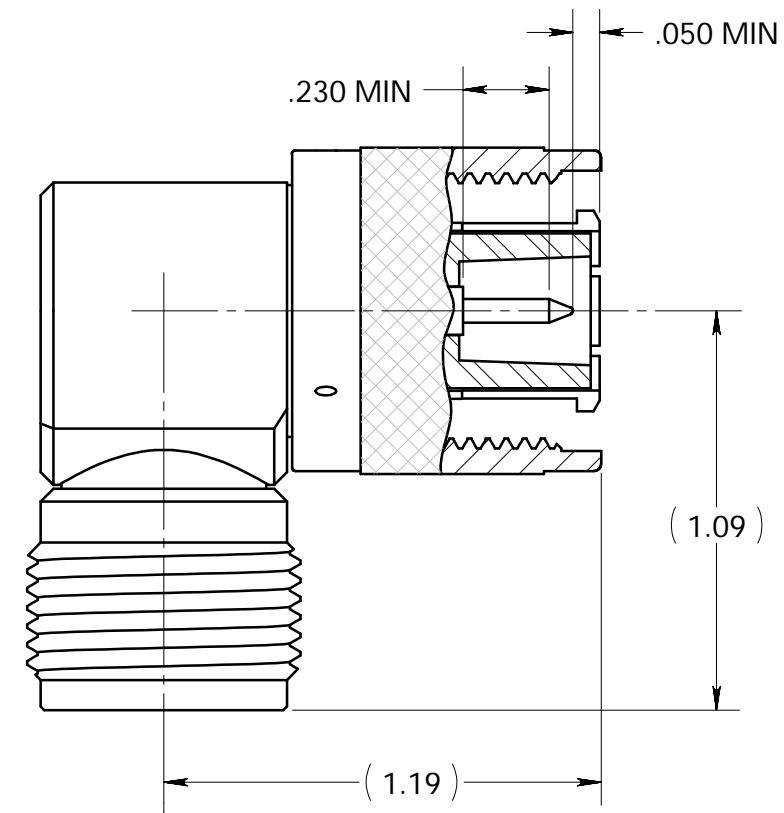
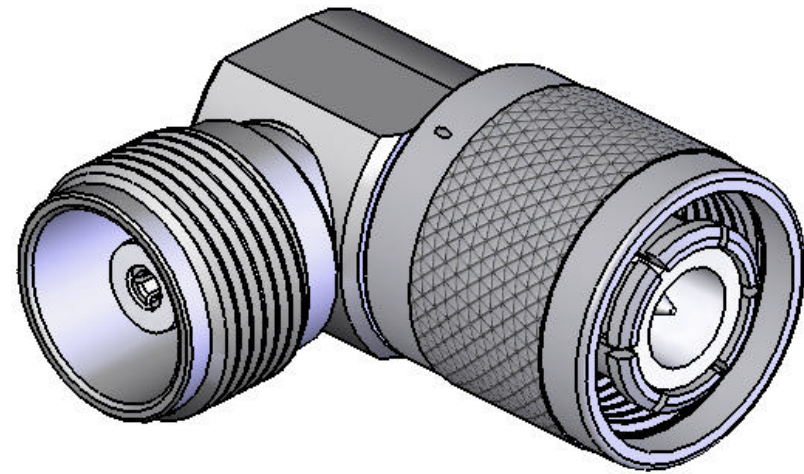


This document, including the design, configuration and mechanical features revealed herein are the sole, confidential and proprietary property of TRU Corporation. Reproduction or use thereof, in whole or part, is prohibited without the prior written consent of TRU Corporation.

REV.	DESCRIPTION	DATE	APPROVED
-	ORIGINAL ISSUE	8/9/07	RMK



**ENGINEERING DATA:**

**ELECTRICAL:**  
 IMPEDANCE: 50 OHMS NOMINAL


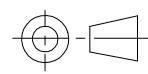
**MECHANICAL:**  
 INTERFACE: HN (f) per MIL-STD-348 Fig. 317.2  
 HN (m) per MIL-STD-348 Fig. 317.1 (except as shown)

WEIGHT: 0.2 POUNDS

**MATERIAL:**  
 INSULATOR: PTFE (Teflon) per ASTM-D1710, I1A  
 OUTER CONTACT FINGERS: BERYLLIUM COPPER C17300, TD04 per ASTM-B196  
 OTHER METAL PARTS: BRASS C36000, H02 per ASTM-B16  
 GASKET: SILICONE RUBBER per A-A-59588A, cl. 2A, gr. 50-60

**FINISH:**  
 CENTER CONTACTS: SILVER PLATED  
 OTHER METAL PARTS: NICKEL PLATED

- NOTES:**
- UNLESS OTHERWISE SPECIFIED; ALL DIMENSIONS ARE REFERENCE ONLY.
  - PRODUCT COMPLIES WITH RoHS DIRECTIVE 2002/95/EC.

MATERIAL	DO NOT SCALE DRAWING	DRAWN RMK	DATE 8/9/07	 <b>TRU CORPORATION</b> 245 LYNNFIELD STREET, PEABODY, MA 01960 The Custom Interconnect Leader™
	UNLESS OTHERWISE SPECIFIED: DIMENSIONS ARE IN INCHES	ENG APPR. KOCH	DATE 8/9/07	
COMMENTS:	TOLERANCES: FRACTIONS: ±1/64 .XX : ±.01 .XXX : ±.005 ANGLES: ±1/2°	MFG APPR.	DATE	TITLE: <b>CONNECTOR, COAXIAL, RF          ADAPTER, HN (f-m) RIGHT ANGLE</b>
	MACHINED SURFACES:  63/	OTHER APPR. AM	DATE 8/9/07	
surface area: ERROR!surface area sq inch weight: 0.198 lbs		THIRD ANGLE PROJECTION 		SIZE <b>B</b> DWG. NO. <b>TRU-15032</b> REV <b>-</b>
		CAGE CODE: 92180	SCALE: 2:1	SHEET 1 OF 1