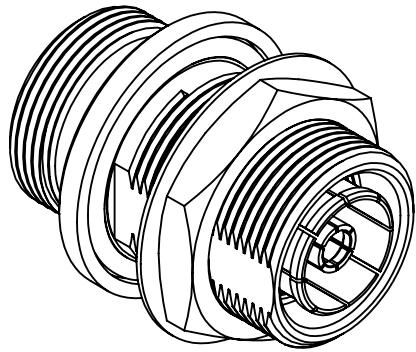


This document, including the design, configuration and mechanical features revealed herein are the sole, confidential and proprietary property of TRU Corporation. Reproduction or use thereof, in whole or part, is prohibited without the prior written consent of TRU Corporation.

REV.	DESCRIPTION	DATE	APPROVED
-	ORIGINAL ISSUE	10/31/14	AM



### ENGINEERING DATA

ELECTRICAL:  
IMPEDANCE: 50 OHMS NOMINAL  
FREQUENCY RANGE: DC to 6 GHz

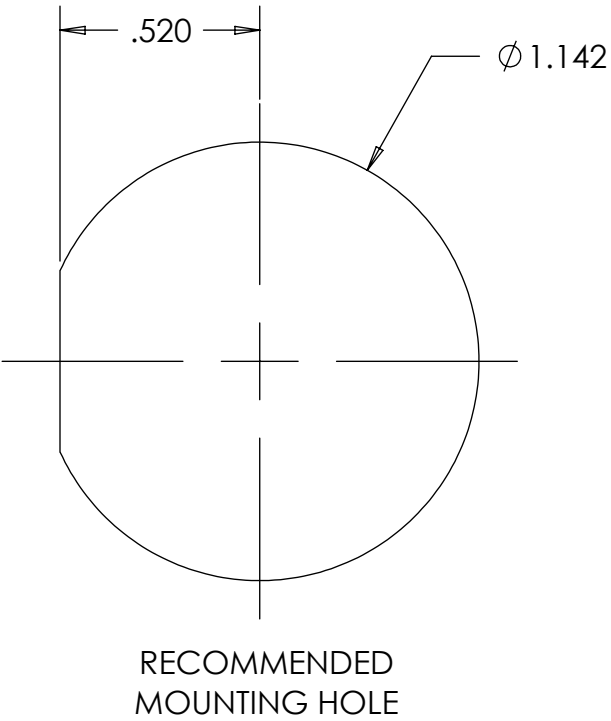
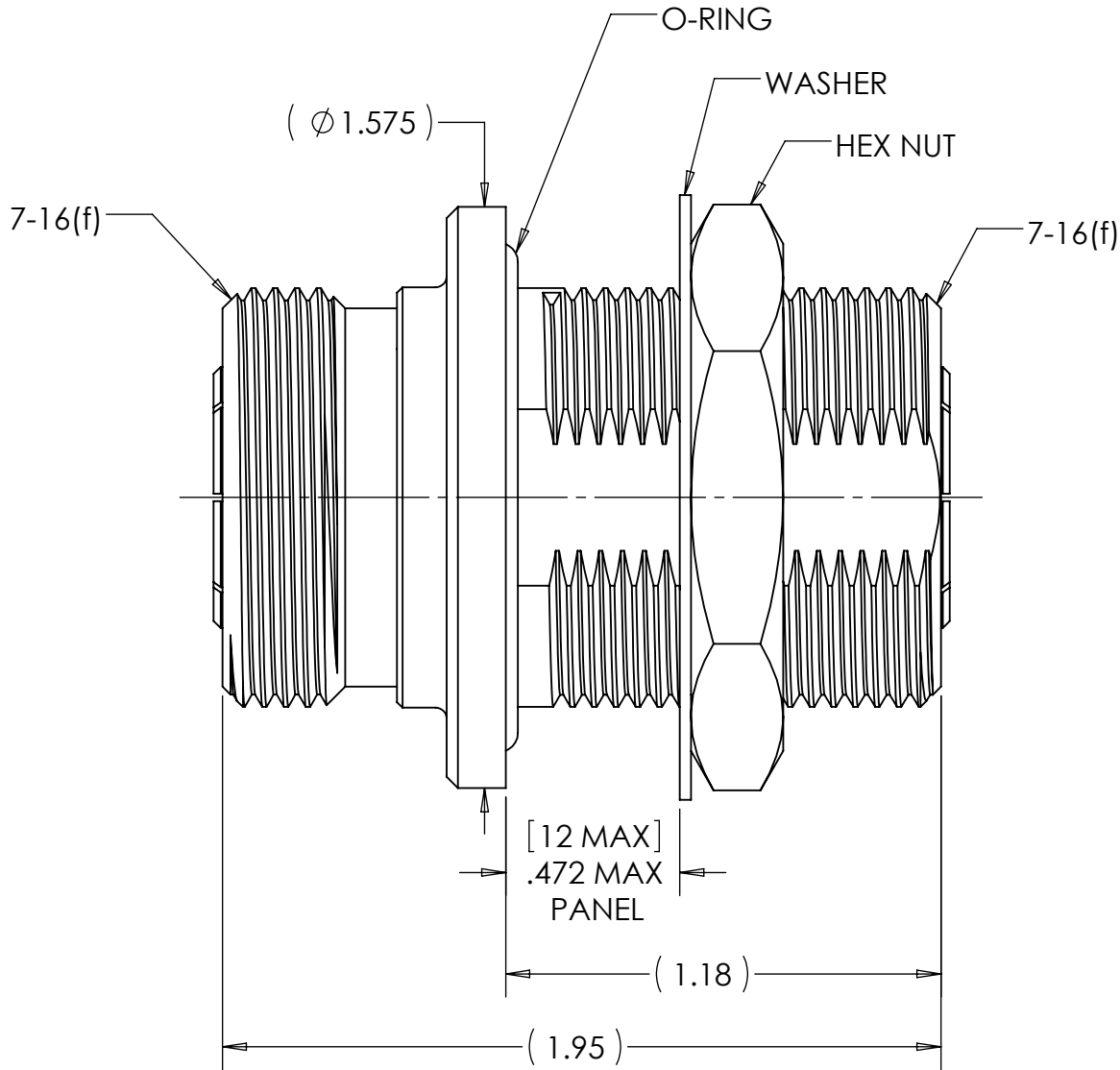
MECHANICAL:  
INTERFACE: 7-16(f) per IEC 169-4

ENVIRONMENTAL:  
SEALED INNER & OUTER CONDUCTORS, 10-6 mbar

MATERIAL:  
CONTACTS: BRASS & BERYLLIUM COPPER  
CONTACT FINGERS: PHOSPHOR BRONZE  
INSULATORS: PTFE  
HOUSING: BRASS  
O-RINGS: SILICONE RUBBER

FINISH:  
CONTACTS: SILVER PLATED  
CONTACT FINGERS: PHOSPHOR BRONZE  
HOUSING: SILVER PLATED

NOTES:  
1. UNLESS OTHERWISE SPECIFIED; ALL DIMENSIONS ARE FOR REFERENCE ONLY.



MATERIAL	
COMMENTS:	
surface area: sq inch	weight: lbs

DO NOT SCALE DRAWING

UNLESS OTHERWISE SPECIFIED:  
DIMENSIONS ARE IN INCHES

TOLERANCES:  
FRACTIONS:  $\pm 1/64$   
.XX :  $\pm .01$   
.XXX:  $\pm .005$   
ANGLES:  $\pm 1/2^\circ$   
MACHINED SURFACES:

63/

DRAWN AM	DATE 10/28/14
ENG APPR. AM	DATE 10/30/14
MFG APPR.	DATE
OTHER APPR.	DATE
THIRD ANGLE PROJECTION	



**TRU Corporation**  
245 Lynnfield St,  
Peabody, MA 01960

TITLE:  
CONNECTOR, COAXIAL  
7-16(f) to 7-16(f) BLKHD ADAPTER

SIZE <b>B</b>	DWG. NO. TRU-12799	REV -
CAGE CODE: 92180	SCALE: 2:1	SHEET 1 OF 1