

This document, including the design, configuration and mechanical features revealed herein are the sole, confidential and proprietary property of TRU Corporation. Reproduction or use thereof, in whole or part, is prohibited without the prior written consent of TRU Corporation.

REV.	DESCRIPTION	DATE	APPROVED
-	ORIGINAL ISSUE	10/25/11	AM

ENGINEERING DATA:

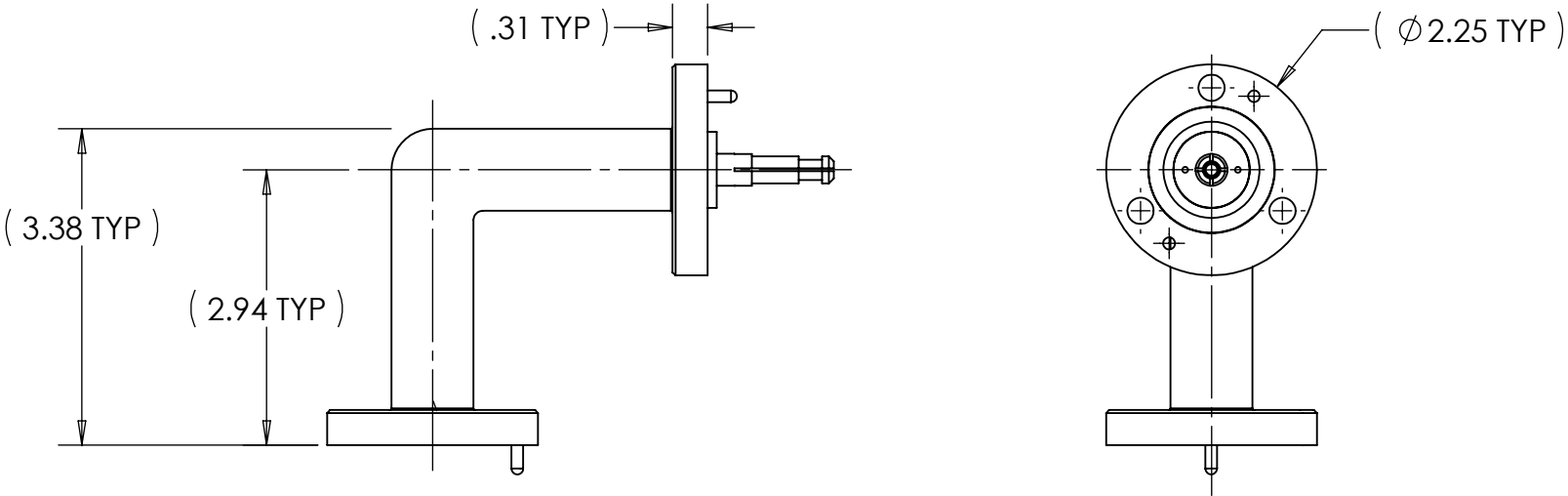
ELECTRICAL:
IMPEDANCE: 50 OHMS NOMINAL



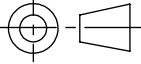
MECHANICAL:
INTERFACE: PER 7/8 EIA STANDARD
BULLET TYPE: REMOVEABLE
FLANGE: SWIVEL

MATERIAL:
INSULATORS: TEFLON
O-RING: SILICONE
CONTACT: COPPER C102
FLANGES: BRASS
HOUSING: BRASS

FINISH:
CONTACT: SILVER PLATED

- NOTES:
- UNLESS OTHERWISE SPECIFIED; ALL DIMENSIONS ARE REFERENCE ONLY.
 - MOUNTING HARDWARE & O-RING INCLUDED BUT NOT SHOWN.
QTY 3 1/4-20 SCREW
QTY 3 1/4-20 HEX NUT
QTY 3 SPLIT LOCKWASHER



MATERIAL	DO NOT SCALE DRAWING	DRAWN MVC	DATE 10/13/11	 TRU Corporation 245 Lynnfield St, Peabody, MA 01960 <small>EXPERIENCE. TRU INNOVATION.</small>		
	UNLESS OTHERWISE SPECIFIED: DIMENSIONS ARE IN INCHES TOLERANCES: FRACTIONS: ±1/64 .XX : ±.01 .XXX: ±.005 ANGLES: ±1/2° MACHINED SURFACES: 	ENG APPR. AM	DATE 10/24/11			
		MFG APPR.	DATE	TITLE: CONNECTOR, COAXIAL, RF 7/8 EIA(m) to 7/8 EIA(f) R/A ADAPTER		
		OTHER APPR.	DATE			
COMMENTS:		THIRD ANGLE PROJECTION		SIZE B	DWG. NO. TRU-11803	REV -
surface area: sq inch weight: lbs				CAGE CODE: 92180	SCALE: 1:2	SHEET 1 OF 1