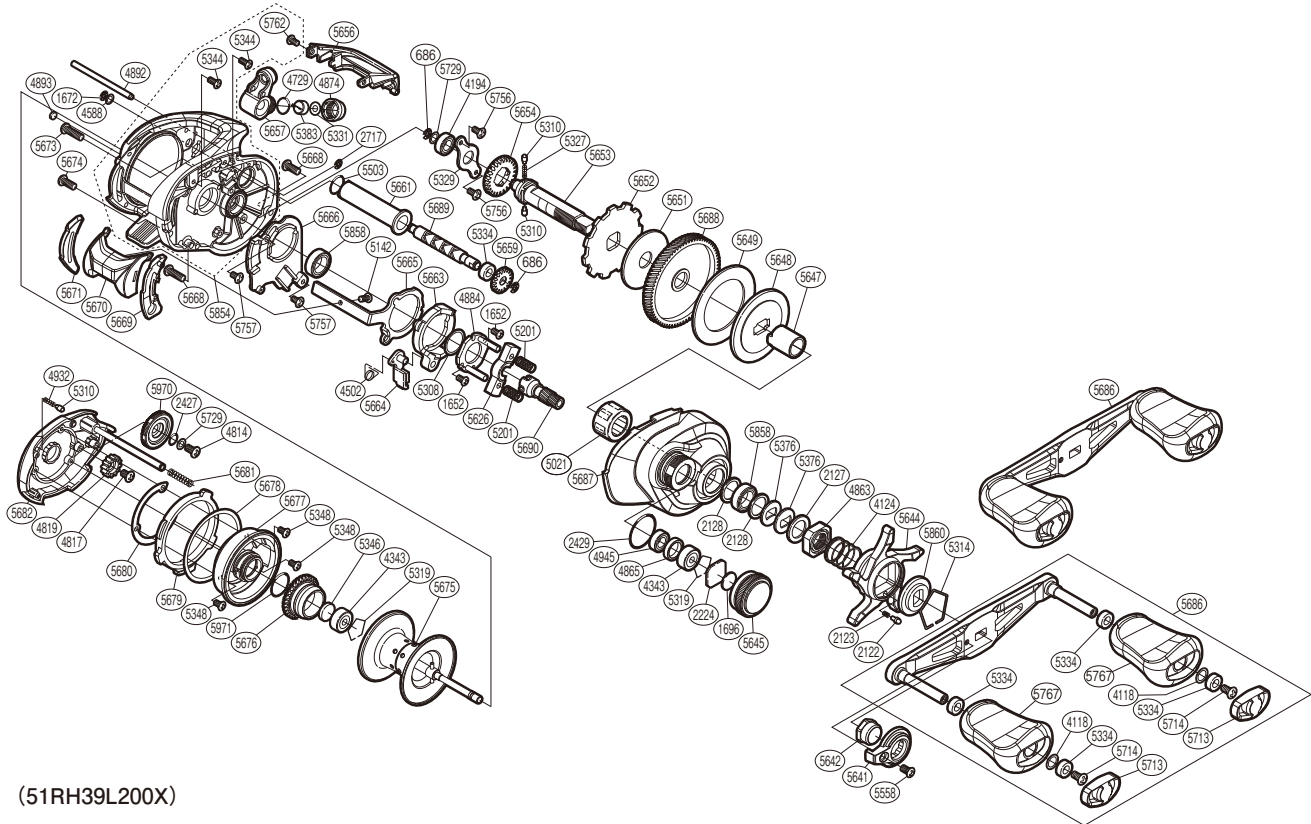


SHIMANO

CURADO

CU-200XGK



(51RH39L200X)

#	Part No.	Description	#	Part No.	Description	#	Part No.	Description
686	105NK	E Lock	5310	10HJG	Idle Gear Pin	5668	10SXB	Screw
1652	10LVE	Screw	5314	10KXW	Click Plate Retainer	5669	10SG5	Clutch Bar Guide B
1672	105NC	E Lock	5319	1054D	Bearing Retainer	5670	101DT	Clutch Button Assembly
1696	10896	Cast Control Spacer	5327	10JDY	Idle Gear Spring	5671	10SRK	Clutch Bar Guide A
2122	10BT0	Click Pin	5329	109T1	Drive Shaft Retainer	5673	10LHY	Screw
2123	10BT2	Click Spring	5331	104TX	Spacer	5674	10SXA	Screw
2127	10J1N	Star Drag Spacer	5334	10PXX	Bushing	5675	101DZ	Spool Assembly
2128	105PW	Washer	5344	10MPD	Screw	5676	101DR	Brake Ring Gear Assembly
2224	1085F	Spool Tension Spacer	5346	10EX5	Spacer B	5677	10DSB	Brake Case Assembly
2427	108WS	O Ring	5348	10L1Q	Screw	5678	104N0	Washer
2429	108WK	O Ring	5376	109F5	Washer	5679	10SG6	Left Side Plate Cam Lever
2717	105NB	E Lock	5383	10BHQ	Line Guide Pawl	5680	10SSN	Washer
4118	10HTT	Washer	5503	101GT	O Ring	5681	10KNH	Spring
4124	10A70	Star Drag Spring	5558	10R1Q	Screw	5682	101DS	Left Side Plate Assembly
4194	105BP	Ball Bearing	5626	10TMB	Yoke	5686	101DY	Handle Assembly
4343	105C3	Ball Bearing	5641	10SSK	Handle Nut Plate	5687	10SSG	Right Side Plate
4502	104CN	Clutch Pawl Spring	5642	10SSU	Handle Nut	5688	10SRN	Drive Gear
4588	10FJZ	Washer	5644	10SS8	Star Drag	5689	10SSS	Worm Shaft
4729	108WQ	O Ring	5645	10SRP	Cast Control Cap	5690	10SSL	Pinion Gear
4814	103LE	Screw	5647	10SRM	Roller Clutch Inner Tube	5713	10SS2	Handle Knob Seal
4817	103L7	Screw	5648	10SSR	Key Washer	5714	10LFA	Screw
4819	10CLF	Idle Gear	5649	10SSF	Drag Washer	5729	1003V	Spacer
4863	10A3T	Star Drag Nut	5651	1023U	Drag Washer	5756	10S3Y	Screw
4865	10EYS	Bearing Spacer	5652	10SSJ	Anti-Reverse Ratchet	5762	10S57	Screw
4874	10FJB	Pawl Cap	5653	10SG7	Drive Shaft	5767	10SSM	Handle Knob
4884	10F3X	Clutch Cam Retainer	5654	101K8	Idle Gear	5854	10S73	Frame Assembly
4892	10QSE	Stabilizer Bar	5656	10SSH	Level Wind Protector	5858	105BT	Ball Bearing
4893	108PY	Washer	5657	101E0	Line Guide Assembly	5860	10J26	Star Drag Click Plate
4932	10GQZ	Click Spring	5659	10SRL	Idle Gear	5970	10SAZ	Brake Dial
4945	105BR	Ball Bearing	5661	10SSP	Level Wind Guard	5971	100GW	O Ring
5021	10F33	Roller Clutch Bearing	5663	10SG1	Clutch Cam	7129	10E8N	Screw
5142	10559	Screw	5664	101M5	Clutch Pawl Assembly			
5201	104BC	Yoke Spring	5665	10SSV	Clutch Plate			
5308	10190	Washer	5666	10SST	Clutch Guard			

Please note that the number of adjusting washers may not be the same as shown in the exploded views.
(Adjustment will vary with each individual product.)

(240623)_017