

PROFICIENT

Signature™

LCR Speakers

C1075s 10" Ceiling LCR Speaker

ITEM
C1075s

U/M
Each

One LCR ceiling speaker with woofer and midrange/tweeter bridge fixed at a 15° angle. 10" Kevlar® woofer, 3" pivoting Kevlar® midrange, 1" pivoting aluminum dome tweeter, ±3dB midrange & treble contour switches and 200 watt power handling. Required for installation, the included PCB-C1000 bracket is designed for new construction as well as retrofit applications.

- Replaces C1031 Ceiling LCR Speaker
- Power Handling: 200 Watts
- Frequency Response: 25Hz - 22kHz
- Impedance: 4Ω

- Sensitivity: 94dB 1W/1m
- Includes Thin-Bezel Grille held by Neo Magnets
- Diameter x Depth: 133/8" x 77/8"
- Ceiling Cut Out: 117/8"



C875s 8" Ceiling LCR Speaker

ITEM
C875s

U/M
Each

One LCR ceiling speaker with woofer and tweeter bridge fixed at a 15° angle. 8" Kevlar® woofer and 1" pivoting aluminum dome tweeter, ±3dB bass & treble contour switches and 175 watt power handling.

- Replaces C871 Ceiling LCR Speaker
- Power Handling: 175 Watts
- Frequency Response: 28Hz - 22kHz
- Impedance: 8Ω

- Sensitivity: 92dB 1W/1m
- Includes Thin-Bezel Grille held by Neo Magnets
- Diameter x Depth: 111/8" x 53/4"
- Ceiling Cut Out: 93/4"

C675s 6½" Ceiling LCR Speaker

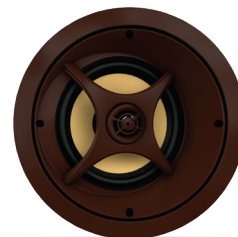
ITEM
C675s

U/M
Each

One LCR ceiling speaker with woofer and tweeter bridge fixed at a 15° angle. 6½" Kevlar® woofer and 1" pivoting aluminum dome tweeter and 125 watt power handling.

- New Ceiling LCR Speaker
- Power Handling: 125 Watts
- Frequency Response: 32Hz - 22kHz
- Impedance: 8Ω

- Sensitivity: 90dB 1W/1m
- Includes Thin-Bezel Grille held by Neo Magnets
- Diameter x Depth: 9¼" x 315/16"
- Ceiling Cut Out: 8¼"



IW675s 6½" Inwall LCR Speaker

ITEM
IW675s

U/M
Each

One inwall LCR speaker with two 6½" Kevlar® woofers, 1" pivoting aluminum dome tweeter, ±3dB bass & treble contour switches and 150 watt power handling. Fits horizontally between 16" on-center wall studs.

- Replaces IW655 Inwall LCR Speaker
- Power Handling: 150 Watts
- Frequency Response: 40Hz - 22kHz
- Impedance: 8Ω

- Sensitivity: 90dB 1W/1m
- Includes Thin-Bezel Grille held by Neo Magnets
- Dimensions (H x W x D): 9" x 161/8" x 33/16"
- Wall Cut Out (H x W): 7½" x 14½"

IW575s 5¼" Inwall LCR Speaker

ITEM
IW575s

U/M
Each

One inwall LCR speaker with two 5¼" Kevlar® woofers, 1" pivoting aluminum dome tweeter, ±3dB bass & treble contour switches and 125 watt power handling.

- Replaces IW555 Inwall LCR Speaker
- Power Handling: 125 Watts
- Frequency Response: 50Hz - 22kHz
- Impedance: 8Ω

- Sensitivity: 88dB 1W/1m
- Includes Thin-Bezel Grille held by Neo Magnets
- Dimensions (H x W x D): 8" x 1515/16" x 33/8"
- Wall Cut Out (H x W): 63/16" x 14½"

