

**OVERVIEW**

The nLight nSHADE Interface Pack enables direct integration with contact closure inputs on controller devices for motorized shades. When combined with nLight-enabled occupancy sensors, photocells, and/or WallPods, the nSHADE adds both automatic and manual shade control functionality to a room's overall lighting control system.

**DEVICE OPERATION**

The nSHADE has two internal relays - one to signal open(on) and one to signal close(off) Signalling is done by closing a relay for a 0.75 seconds. Connection to other nLight devices is done with CAT-5 cables that connect via the unit's two RJ-45 connectors. For simplifying installation, the nSHADE has an elongated chase nipple that allows it to be attached through a 1/2" knockout into a junction box.

**FEATURES**

- Signals motorized shade controllers to open/close shades
- Communicates w/ nLight network
- Remotely configurable/upgradable
- Push-button programmable
- Extended chase nipple
- Plenum rated

**Buy American**

BAA variants of this product are assembled in the USA and meet the Buy America(n) government procurement requirements under FAR, DFARS and DOT. Please refer to [www.acuitybrands.com/buy-american](http://www.acuitybrands.com/buy-american) for additional information.

**Warranty**

Five-year limited warranty. Complete warranty terms located at: [www.acuitybrands.com/support/warranty/terms-and-conditions](http://www.acuitybrands.com/support/warranty/terms-and-conditions)

**Note:** Actual performance may differ as a result of end-user environment and application. Specifications subject to change without notice.



nSHADE



**A+ Capable**

This item is an A+ capable component, which has been designed and tested to provide out-of-the-box luminaire compatibility with simple commissioning, when included as part of an A+ Certified™ Solution.

To learn more about A+, visit [www.acuitybrands.com/aplus](http://www.acuitybrands.com/aplus).



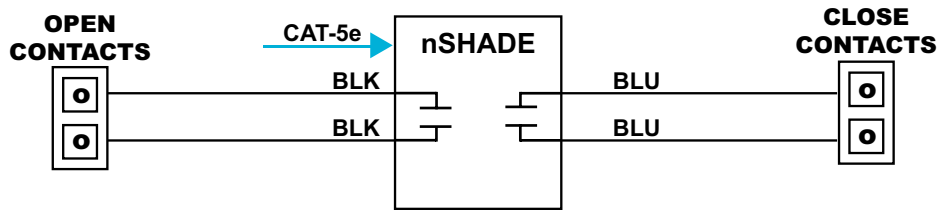
ORDERING INFORMATION

nSHADE		Example: nSHADE LT	
Series	Options	Temp/Humidity	Buy America(n) <sup>1</sup>
nSHADE	[blank] None MCH Includes custom interface terminal adapter for connection with MechoShade IQ/MLC2	[blank] Standard LT Low temp	[blank] Standard BAA Buy America(n) Act Compliant

**Notes:**  
1. Not available with MCH or LT options

## WIRING (DO NOT WIRE HOT)

Device power is provided via the CAT-5e connection and not taken off the line. T568B pin/pair assignment is recommended for all CAT-5e cables.



### NOTES FOR WIRING TO SHADE CONTROLLERS

**MechoShade** - using the RJ-45 to terminal adapter provided with the **nSHADE-MCH** version, connect wire outputs of **nSHADE** to either a "Local Switch Port" (RJ-45) or "Master Switch Port" (RJ-45) on IQ/MLC2 Controller. See shade controller documentation to determine pin-out configuration needed.

**Lutron Sivoia QED** - connect **nSHADE** wires to contact closure terminals 1(Open) and 5 (Close) on SVQ-CCI-8 Contact Closure Input Board.

**Lutron QS** - connect **nSHADE** wires to QSE-IO inputs 1 & 5 and run in "Shade Input Preset" mode.

**Performance Concepts** - connect **nSHADE** wires directly to the "Switch/Interfaces" contacts on the AC4 Motor Controller.

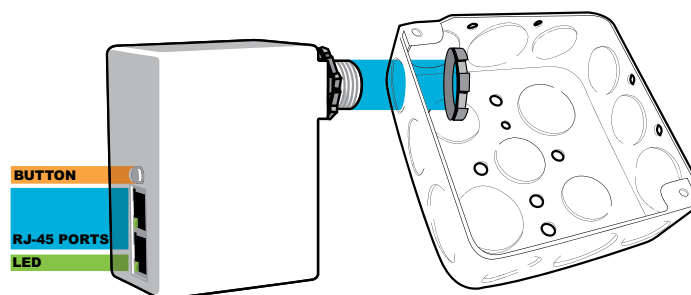
## OPERATIONAL SETTINGS

Several operational settings for the **nSHADE** are available:

- Override (On/Off/Normal)
- Occupancy Tracking (Enable/Disable)
- Photocell Tracking (Enable/Disable)
- Switch Tracking (Enable/Disable)
- Local Occupancy Tracking Channel (1-16)
- Local Photocell Tracking Channel (1-16)
- Local Switch Tracking Channel (1-16)
- Global Tracking (Enable/Disable)
- Global Tracking Channel (1-128)
- LED (Override On/Override Off/Normal)
- Special Modes: Manual On to Auto Off, Auto to (Timed) Override On, Manual to (Timed) Override On, Manual On to Full Auto, Predictive Off

## INSTALLATION INSTRUCTIONS

- Mount to any junction box through a 1/2" knockout.
- Connect Class 2 wires to contact closure inputs on shade controller.
- Interconnect unit (via RJ-45 ports) with other nLight devices in lighting zone using CAT-5e cables.
- Once power is received via CAT-5e connection, all devices in zone will automatically begin functioning together according to each device's defaults.



# IMPORTANT SAFEGUARDS

When using electrical equipment, basic safety precautions should always be followed including the following:

## READ AND FOLLOW ALL SAFETY INSTRUCTIONS.

- Do not use outdoors.
- Do not mount near gas or electric heaters.
- Equipment should be mounted in locations and at heights where it will not be subjected to tampering by unauthorized personnel.
- The use of accessory equipment not recommended by the manufacturer may cause an unsafe condition.
- Turn power off, both normal and emergency sources before installation/servicing any equipment connected to this unit.
- Do not use this equipment for other than its intended use.

## SAVE THESE INSTRUCTIONS

## SPECIFICATIONS

---

<b>Electrical</b>	<b>Input Ratings</b>	15-24VDC, 3mA, Class 2 (nLight network power)
	<b>Output Ratings</b>	40VAC/DC, 1A (Per Relay)
	<b>Relay Type</b>	Momentary Contact
<b>Mechanical</b>	<b>Dimensions</b>	3.38"H x 2.53"W x 1.83"D (86mm x 64mm x 47mm) - does not include 1/2" chase nipple
	<b>Mounting</b>	1/2" Knockout (7/8" hole)
	<b>Color</b>	White
	<b>Connection Type</b>	RJ-45 nLight Network Ports (2) Low-Voltage Leads
<b>Environmental</b>	<b>Warrantied Operating Temperature</b>	14°F to 122°F (-10°C to 50°C)
	<b>Relative Humidity</b>	Up to 90%, Non-Condensing
	<b>Standards/ Ratings</b>	RoHS
<b>General</b>	<b>Standards/ Ratings</b>	System Component to aid in compliance with Title 24, ASHRAE 90.1, IECC