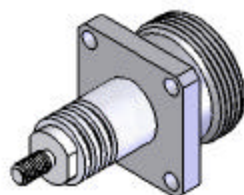


This document, including the design, configuration and mechanical features revealed herein are the sole, confidential and proprietary property of TRU Corporation. Reproduction or use thereof, in whole or part, is prohibited without the prior written consent of TRU Corporation.

REV.	DESCRIPTION	DATE	APPROVED
-	ORIGINAL ISSUE	11/04/08	AM



ISOMETRIC VIEW
SCALE 1:1

ENGINEERING DATA:

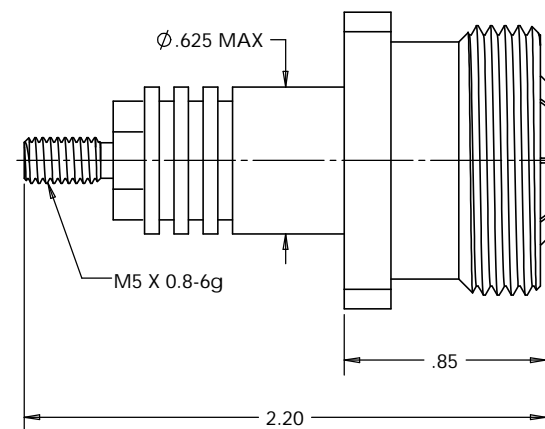
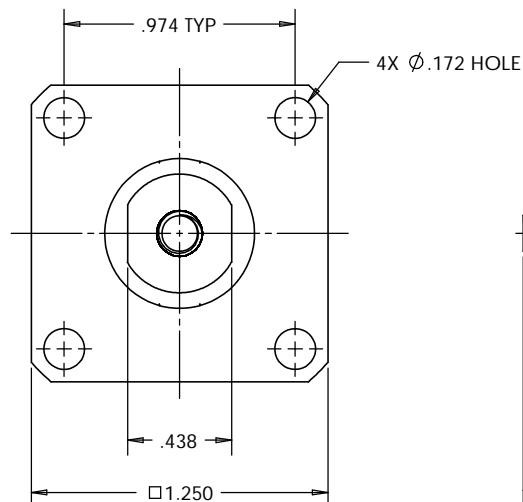
MECHANICAL:
INTERFACE: 7-16(f) PER IEC 169-4, DIN 47223


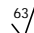
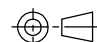
MATERIAL:
INSULATORS: PTFE (TEFLON)
FEMALE CONTACT: BERYLLIUM COPPER
OUTER CONDUCTOR: PHOSPHOR BRONZE
OTHER METAL PARTS: BRASS

FINISH:
CONTACTS: SILVER PLATED
OUTER CONDUCTOR: SILVER PLATED
OTHER METAL PARTS: NICKEL PLATED

NOTES:

1. UNLESS OTHERWISE SPECIFIED; ALL DIMENSIONS ARE REFERENCE ONLY.
2. PRODUCT COMPLIES WITH ROHS DIRECTIVE 2002/95/EC.



MATERIAL	DO NOT SCALE DRAWING	DRAWN MVC	DATE 11/04/08	 TRU CORPORATION 245 LYNNFIELD STREET, PEABODY, MA 01960 <i>The Custom Interconnect Leader™</i>	TITLE: CONNECTOR, COAXIAL, RF 7-16(f) RECEPTACLE, PANEL with Non-Rotating Contact	SIZE B	DWG. NO. TRU-10966	REV -
	UNLESS OTHERWISE SPECIFIED: DIMENSIONS ARE IN INCHES	ENG APPR. AM	DATE 11/04/08					
	TOLERANCES: FRACTIONS: ±1/64 .XX : ±.01 .XXX: ±.005 ANGLES: ±1/2	MFG APPR.	DATE					
	MACHINED SURFACES: 	OTHER APPR.	DATE					
COMMENTS:		THIRD ANGLE PROJECTION 		CAGE CODE: 92180		SCALE: 2:1		SHEET 1 OF 1
surface area: sq inch	weight: lbs							