

This document, including the design, configuration and mechanical features revealed herein are the sole, confidential and proprietary property of TRU Corporation. Reproduction or use thereof, in whole or part, is prohibited without the prior written consent of TRU Corporation.

| REV. | DESCRIPTION | DATE | APPROVED |
|------|----------------|----------|----------|
| - | ORIGINAL ISSUE | 11/30/12 | TRC |

ENGINEERING DATA:

ELECTRICAL:
IMPEDANCE: 50 OHM NOMINAL

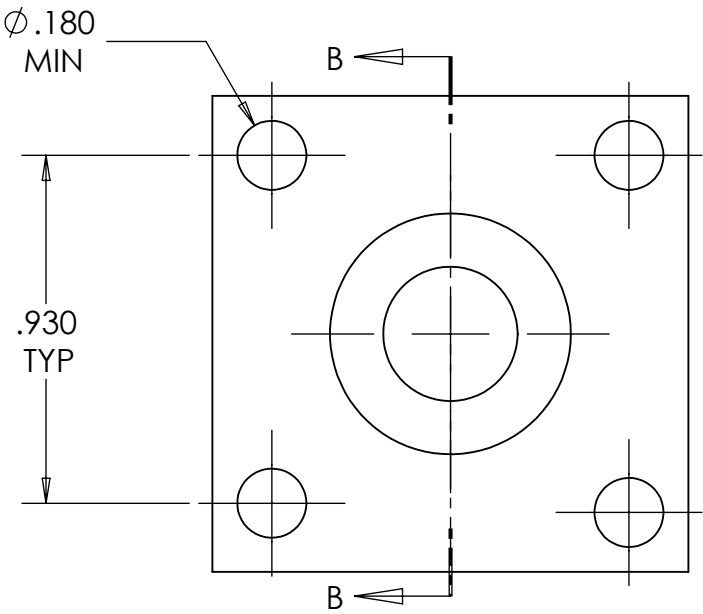
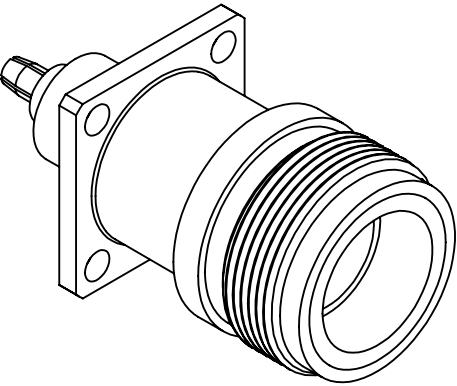
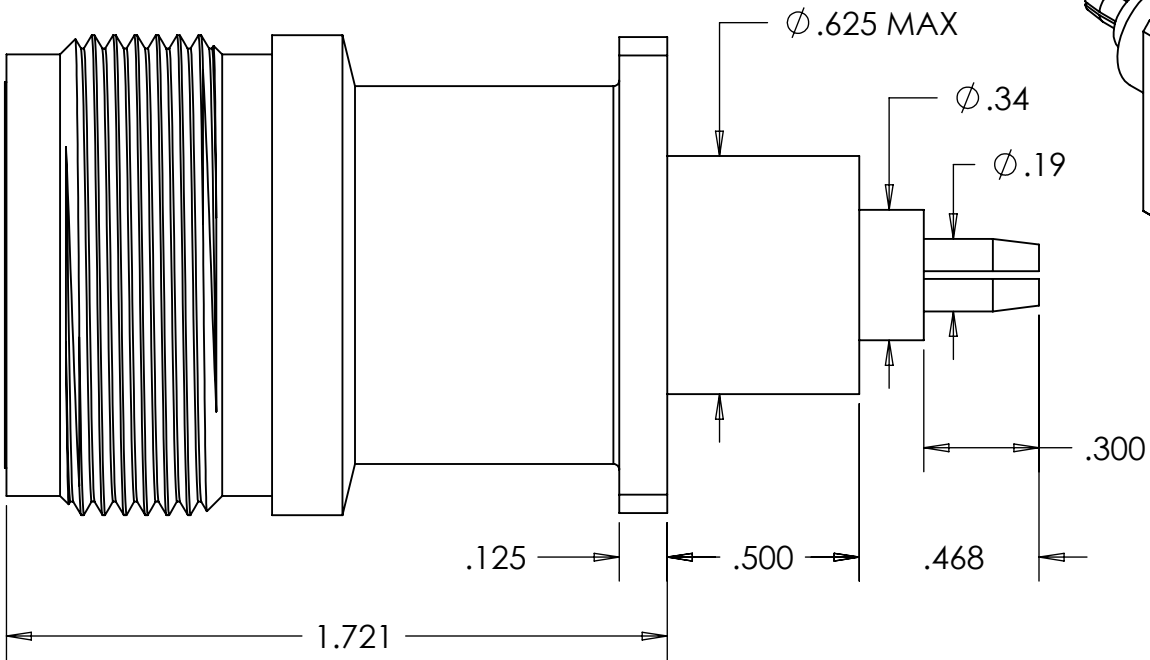
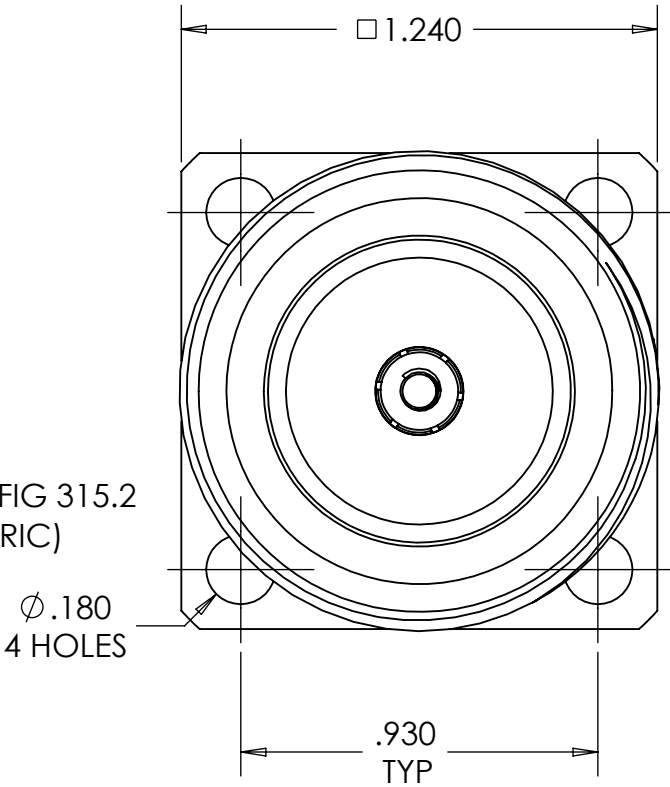
MECHANICAL:
INTERFACE: LC(f) PER MIL-STD-348 FIG 315.2
(TEFLON DIELECTRIC)

MATERIAL:

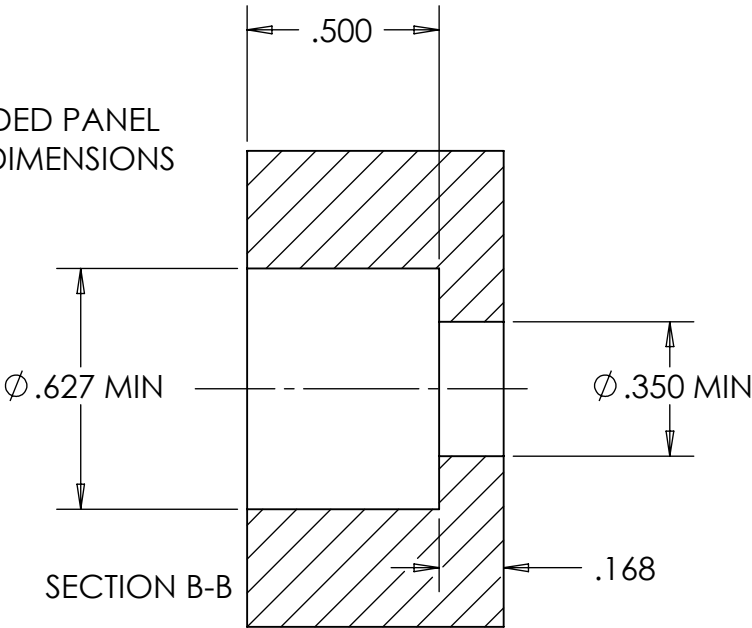
INSULATOR: TEFLON
CONTACT: BERYLLIUM COPPER
OTHER METAL PARTS: BRASS

FINISH:

CONTACT: SILVER PLATED
OTHER METAL PARS: NICKEL PLATED


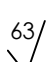
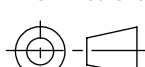


RECOMMENDED PANEL
MOUNTING DIMENSIONS



NOTES:

- UNLESS OTHERWISE SPECIFIED; ALL DIMENSIONS ARE REFERENCE ONLY.
- PRODUCT COMPLIES WITH RoHS DIRECTIVE 2002/95/EC.

| | | | | | | |
|----------------------------|---|--|------------------|--|---------------------------|--------------|
| MATERIAL | DO NOT SCALE DRAWING | DRAWN TRC | DATE 11/27/12 | <div> TRU Corporation 245 Lynnfield St, Peabody, MA 01960</div> <div>EXPERIENCE. TRU INNOVATION.</div> | | |
| | UNLESS OTHERWISE SPECIFIED: DIMENSIONS ARE IN INCHES | ENG APPR. TRC | DATE 11/30/12 | | | |
| | TOLERANCES: FRACTIONS: ± 1/64 .XX : ± .01 .XXX: ± .005 ANGLES: ± 1/2° MACHINED SURFACES: <div></div> | MFG APPR. NRM | DATE 11/30/12 | TITLE: LC(f) RECEPTACLE, PANEL | | |
| | | OTHER APPR. AM | DATE 11/28/12 | | | |
| COMMENTS: | | THIRD ANGLE PROJECTION <div></div> | | SIZE B | DWG. NO. TRU-12166 | REV - |
| | | | | CAGE CODE: 92180 | | SCALE: 2:1 |
| surface area: 8.67 sq inch | | weight: 0.03 lbs | | | | |