



COMMERCIAL ELECTRIC GLASS STEAMER

Operating Instruction Manual



For California Customers



WARNING: Cancer and Reproductive Harm -
www.P65Warnings.ca.gov

Model	Voltage	Power	Amperage	Plug Type	Overall Dimensions			Product Weight
					Length	Depth	Height	
GSS-04	110 V ~ 50/60 Hz	350 W	3.18 A	NEMA 5-15P	10-1/2" (267mm)	9-1/8" (232mm)	11-1/4" (285mm)	13.5 lbs (6.1 kgs)
GSS-04-I	220 V~50/60 Hz	350 W	1.59 A	NEMA 6-15P				

BEFORE OPERATING ANY EQUIPMENT, READ AND FAMILIARIZE YOURSELF WITH THESE USE AND SAFETY INSTRUCTIONS

*Congratulations on your WINCO® equipment purchase! WINCO takes pride in the quality of its products. When used as intended, and with proper care and maintenance, you will experience years of reliable operation from this equipment. To ensure best results, it is important that you read and follow the instructions in this manual carefully. **It's important to save these instructions for future reference.***

Commercial Electric Glass Steamer

Important For Future Reference

Please complete this information and retain this manual for the life of the equipment. For Warranty Service and/or parts, this information is required.

Model Number

Serial Number

Date Purchased



WARNING: IMPROPER INSTALLATION, ADJUSTMENT, ALTERATION, SERVICE OR MAINTENANCE CAN CAUSE PROPERTY DAMAGE, INJURY, OR DEATH. READ THE INSTALLATION, OPERATION, AND MAINTENANCE INSTRUCTIONS THOROUGHLY BEFORE INSTALLING OR SERVICING THIS EQUIPMENT.



CAUTION: THESE MODELS ARE DESIGNED, BUILT, AND SOLD FOR COMMERCIAL USE ONLY. IF THESE MODELS ARE POSITIONED SO THE GENERAL PUBLIC CAN USE THE EQUIPMENT, MAKE SURE THAT CAUTION SIGNS, WARNINGS, AND OPERATING INSTRUCTIONS ARE CLEARLY POSTED NEAR EACH UNIT SO THAT ANYONE USING THE EQUIPMENT WILL USE IT CORRECTLY AND NOT INJURE THEMSELVES OR HARM THE EQUIPMENT.



WARNING: A FACTORY AUTHORIZED SERVICE PROVIDER SHOULD HANDLE ALL MAINTENANCE AND REPAIR. BEFORE DOING ANY MAINTENANCE OR REPAIR, FOLLOW SERVICE SET UP ARRANGEMENT ON PAGE 11.

Introduction

Congratulations on your WINCO® equipment purchase! Please take time to carefully read through this manual to ensure the equipment is operated and maintained properly, to ensure the best possible performance from the product for many years.

WINCO will not accept liability for the following if:

- The instructions in this manual have not been followed correctly.
- Non-authorized personnel have tampered with the equipment.
- Non-original spare parts are used.
- The equipment has not been handled and cleaned correctly.
- There is any use damage to the unit.

Immediately Inspect for Shipping Damage

All containers should be examined for damage before and during unloading. The freight carrier has assumed responsibility for its safe transit and delivery. If equipment is received damaged, either apparent or concealed, a claim must be made with the delivering carrier.

- A. Apparent damage or loss must be noted on the freight bill at the time of delivery. It must then be signed by the carrier representative (Driver). If this is not done, the carrier may refuse the claim. The carrier can supply the necessary forms.
- B. If concealed damage or loss is not apparent until after equipment is uncrated, a request for inspection must be made to the carrier within 15 days. The carrier should arrange an inspection. Be certain to keep all contents and packaging material.

Commercial Electric Glass Steamer

Table of Contents

Specifications	1
Warnings	2
Introduction	2
Table of Contents	3
Packaging	3
Safety Precautions.....	4
Installation	4
Preparation & Operation	5
Cleaning, Care & Maintenance	6
Troubleshooting	7
Service & Repair	7
Exploded View	8
Parts List	9
Electrical Diagram	10
Limited Warranty & Equipment Warranty Registration.....	11

Package Contents

All units come with an Operating Instruction Manual and the following:

- Glass Steamer

WINCO® prides itself on quality and service, ensuring that at the time of packing, all products are supplied fully functional and free of damage. Should you find any damage as a result of freight, please contact your WINCO dealer immediately.

Unpacking the Equipment

DISPOSE OF ALL PACKAGING MATERIALS IN AN ENVIRONMENTALLY RESPONSIBLE MANNER.

1. Remove all packing materials and tape, as well as any protective plastic and cardboard, from the unit.
2. Clean any glue residue left over from the plastic or tape.
3. Place the unit in the desired position and height.

SAVE THE ORIGINAL BOX AND PACKAGING FOR USE IN PACKAGING AND SHIPPING THE EQUIPMENT IF SERVICES ARE NEEDED.

Thoroughly read, understand, and follow these instructions before installation and use.

Please keep this manual in a safe place for future use!

NOTE

Please remember that this manual and the warning labels do not replace the need to be alert, to properly train and supervise operators, and to use common sense when using this equipment.

Safety Precautions

Before installing and operating this equipment be sure everyone involved in its operation are fully trained and aware of all precautions. Accidents and problems can result from a failure to follow fundamental rules and precautions.

- A WINCO® Approved Recommended Qualified Service Technician should carry out repairs if necessary. Do not remove any components or service panels on this product.
- Before handling, allow the equipment to cool after use.
- Before cleaning, switch off power and disconnect power cord from the outlet.
- **Do not immerse unit in water or use hose to clean.**
- If the power cord is damaged, it must be replaced by a WINCO® Approved Recommended Qualified Service Technician in order to avoid a hazard.
- Do not store or use gasoline or other flammable vapors and liquids in the vicinity of this or any other appliance.
- Contact your local gas supplier and ask for instructions in the event the user smells gas. This information should be posted in a prominent location.

Installation

These instructions should be followed at all times. Failure to follow these instructions could result in injury to yourself and others.

TO REDUCE RISK OF INJURY OR DAMAGE TO THE UNIT:

1. Read this manual thoroughly before installation and operation. DO NOT proceed with installation and operation if you have any questions or do not understand anything in this manual. Contact your representative or the manufacturer first.


	<p align="center">⚠ WARNING ⚠</p> <p>Fire Hazard. Correct installation precautions, procedures and regulations must be followed. Operation and safety training is necessary for all users of this equipment.</p> <p>The equipment must be installed by qualified personnel only. Correct installation precautions, procedures and regulations must be followed in order to reduce the risk of fire. Hood and fire suppression systems must be maintained per manufacturer's guidelines. Only qualified and trained personnel are to use this equipment.</p>
-------------------------------------------------------------------------------------	-------------------------------------------------------------------------------------------------------------------------------------------------------------------------------------------------------------------------------------------------------------------------------------------------------------------------------------------------------------------------------------------------------------------------------------------------------------------------------------------------------------------------------------------------------------------------------

2. Remove the equipment from the packaging. Be certain that all protective plastics and residues are thoroughly cleaned from its surface.
3. Place your equipment on a firm level surface. Local standards and regulations should be consulted in order to abide by standards set in relation to positioning, spacing, and ventilation. Bar Maid recommends no less than 4" for a ventilation gap around the perimeter of this unit.

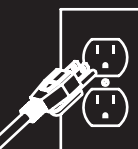


CAUTION

Do not position or operate near combustible materials/flammable objects.

	<p align="center">⚠ WARNING ⚠</p> <p>Electrical Shock Hazard Keep water and other liquids from entering the inside of the unit. Liquid inside the unit could cause an electrical shock.</p> <p>Do not spray water or cleaning products. Liquid could contact the electrical components and cause a short circuit or an electrical shock. Do not use unit if power cord is damaged or has been modified.</p>
--------------------------------------------------------------------------------------	-------------------------------------------------------------------------------------------------------------------------------------------------------------------------------------------------------------------------------------------------------------------------------------------------------------------------------------------------------------------------------------------------------------------------------

4. Proper connections and power supply are essential for efficient performance. Supply the appropriate power and connect to source; the equipment is now ready to turn on and operate. (For power supply please see technical specification on page 1).
5. The installation of the unit must conform to the NATIONAL ELECTRIC CODE, ALL LOCAL ELECTRIC CODES AND ORDINANCES, AND ALL THE LOCAL ELECTRICAL COMPANY RULES AND REGULATIONS. Additionally, we recommend a 4" spacing surrounding the unit in order to provide adequate ventilation.

	<p align="center">Proper Grounding USE A GROUNDED OUTLET DO NOT ADD AN ADAPTOR TO THE PLUG</p> <p>This machine is provided with a three-pronged grounding plug. The outlet to which this plug is connected must be properly grounded. If the receptacle is not the proper grounding type, contact an electrician. DO NOT, under any circumstances, cut or remove the third ground prong from the power cord or use any adapter plug.</p>
--------------------------------------------------------------------------------------	----------------------------------------------------------------------------------------------------------------------------------------------------------------------------------------------------------------------------------------------------------------------------------------------------------------------------------------------------------------------------------------------------------------------------------------------------------------------------------

Preparation & Operation

1. Set unit on a flat, stable surface, away from any combustible materials and near a power source.
2. **Clean thoroughly BEFORE USE.**
3. Add water into the well pan to the fill line.
DO NOT OPERATE WITHOUT WATER IN THE WELL PAN. Using the unit without water will cause metal fatigue and excess wear on metal components, which will result in rendering the unit inoperable.
Use care when handling hot water and steam.
4. If the unit fails to work properly during initial use, please notify customer service at: returns@wincous.com.
5. Plug cord into properly grounded outlet with the correct voltage and power requirement. Electrical shock may occur if appliance is not grounded properly.
6. Turn on power switch. The unit is ready to use when all the lights are on and water vapor appears.
7. **REFILL RESERVOIR** light will turn off when water level is low.
Refill well pan to fill line to continue operation. Repeat as needed.

Note: After approximately 90 minutes of use, the REFILL RESERVOIR light will turn off and unit will disconnect for safety.



Cleaning, Care & Maintenance

To maintain the appearance and increase the service life, clean equipment daily.

Clean all surfaces before using the appliance. Also clean after each day's operation; however, the unit may require more frequent cleaning, depending on the volume of production.



1. **ALWAYS** unplug the power cord and allow unit to cool down prior to cleaning.
2. Carefully empty the remaining hot water in the well pan.
3. Wipe the inside of the emptied well pan with a clean damp cloth.
4. **NEVER** immerse the device in water or other liquid.
5. **DO NOT** clean with a pressure washer.
6. If soap or chemical cleaners are used, make sure they are rinsed away thoroughly with clean water immediately after cleansing.
Switch power off and disconnect from the outlet before cleaning.

Chlorinated chemical residue could damage the unit by degrading the stainless steel surfaces.

7. To remove calcified scale buildup use 1 teaspoon of white vinegar to 1 cup of water. Pour enough into the well pan to cover the bottom.
Let this stand for about 30 minutes. Rinse out and repeat if necessary.

Do not wash in an automatic dishwasher.

8. Allow unit to dry before turning back on.

***ALWAYS** remember to unplug the electrical power from the unit before cleaning or handling.*

Troubleshooting

If your equipment unit does not operate, please check the following prior to placing a service call.

ISSUE	MIGHT BE CAUSE BY	RECOMMENDED SOLUTION
Unit won't heat	Power supply	Check power source, make sure unit is plugged in
	Defective on/off switch	Make sure switch lights up
	Plug/cord, set or external wiring is damaged	Remove and replace
	Faulty heat indicator sensor	Remove and replace
Product is cold or not reaching desired temperature	Faulty heat indicator sensor	Remove and replace
Appliance trips circuit breaker or blows fuse	Circuit overload	Check to make sure circuit is not overloaded
	Faulty heating element	Remove and replace - <i>Replacement must be done by an authorized service provider</i>

Service and Repair

THIS EQUIPMENT MUST ONLY BE SERVICED BY AN AUTHORIZED AGENT.

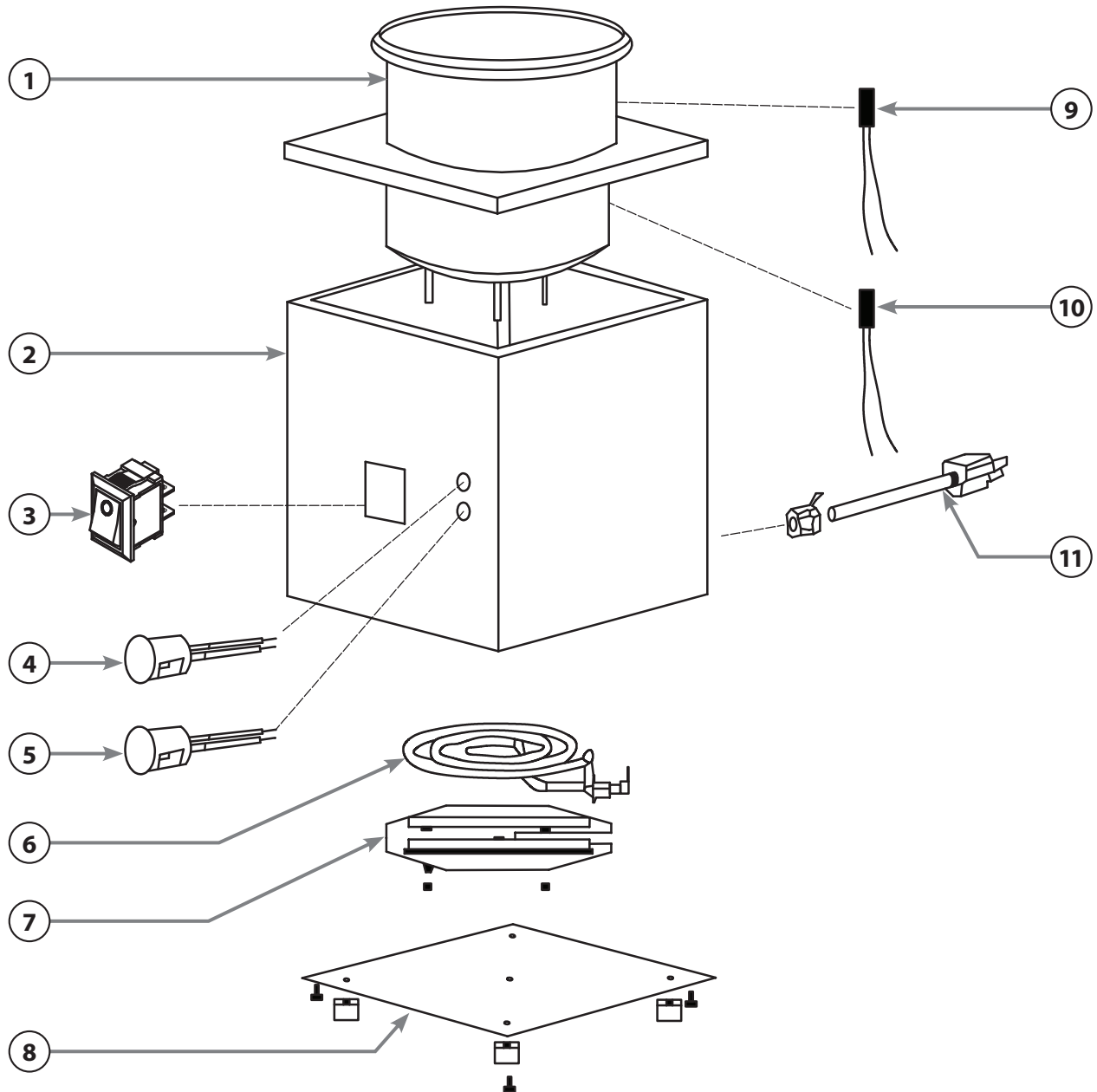
NOTE

Parts protected by the manufacturer or its agent are not to be adjusted by the installer unless the installer is an authorized service agent.

If you have any questions or problems DO NOT send unit to WINCO® without first contacting our customer service department.

See "Limited Warranty" section on page 11 for details.

Exploded View



Parts List

#	Description	Part #	
		GSS-04	GSS-04-I
1	Well - 4.25 Qt	GSS04-P1	
2	Jacket	GSS04-P2	
3	On/Off Switch	GSS04-P3	
4	Low Water Indicator Light (Red)	GSS04-P4	
5	Pilot Light (Amber)	GSS04-P5	
6	Heating Element	GSS04-P6	GSS04-P7
7	Element Support Plate	GSS04-P8	
8	Base Plate	GSS04-P9	
9	Low Water Sensor	GSS04-P10	
10	Heat Indicator Sensor	GSS04-P11	
11	Cord	GSS04-P12	GSS04-P13

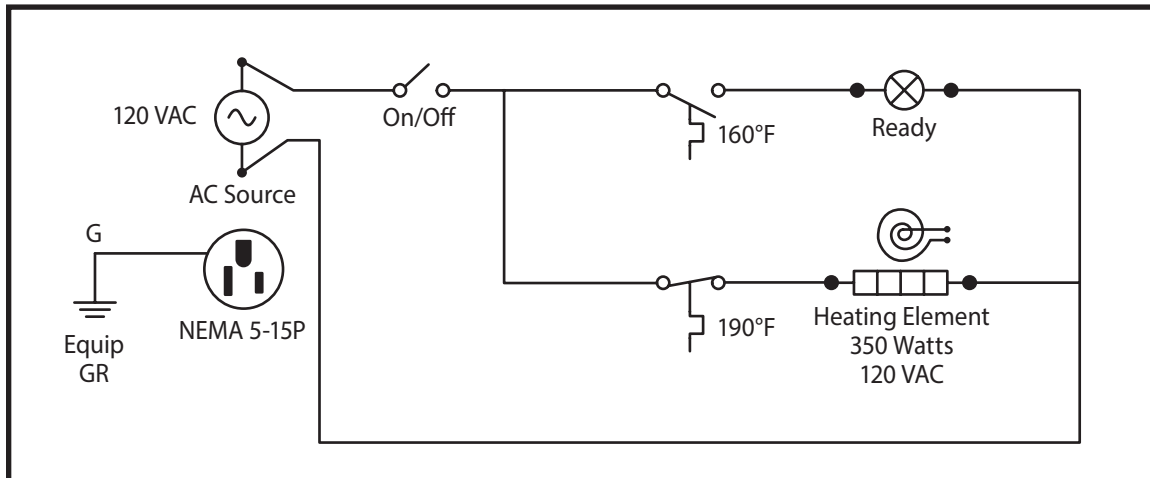
SCAN TO ORDER PARTS

If having trouble or unable to scan, enter the web address <https://www.winco.us/pages/order-parts>

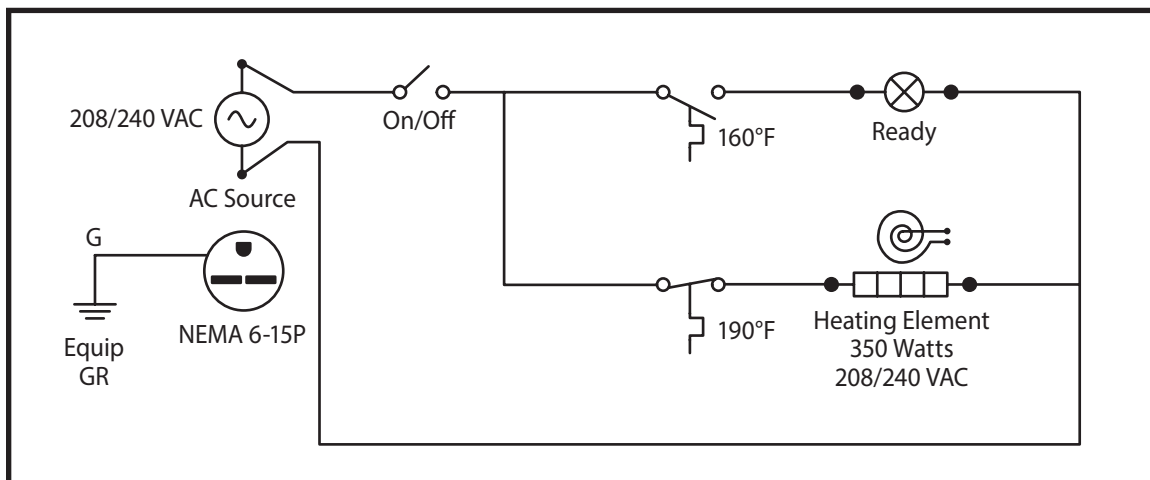


Electrical Diagram

Model: GSS-04



Model: GSS-04-I



Circuit diagrams have been provided to assist qualified electricians; only WINCO service agents or qualified electricians should carry out repairs if required.

Do not remove any components or service panels on this product.

Limited Warranty & Equipment Warranty Registration

WINCO® warrants to the original purchaser of new equipment that said equipment, when installed in accordance with our instructions within North America and subjected to normal use, is free from defects in material or workmanship for a period of 1 year. The labor warranty is one year from original installation or 18 months from actual factory shipment date, whichever date occurs first.

THIS WARRANTY IS IN LIEU OF ALL OTHER WARRANTIES, WHETHER EXPRESSED OR IMPLIED. WINCO EXPRESSLY DISCLAIMS ANY IMPLIED WARRANTY OF MERCHANTABILITY OR EXPRESSED OR IMPLIED WARRANTY OF FITNESS FOR A PARTICULAR PURPOSE.

WINCO'S OBLIGATION AND LIABILITY UNDER THIS WARRANTY IS EXPRESSLY LIMITED TO REPAIRING AND REPLACING EQUIPMENT THAT PROVES TO BE DEFECTIVE IN MATERIAL OR WORKMANSHIP WITHIN THE APPLICABLE WARRANTY PERIOD.

IN NO EVENT SHALL WINCO BE LIABLE FOR INCIDENTAL OR CONSEQUENTIAL DAMAGES TO BUYER OR ANY THIRD PARTY, INCLUDING, WITHOUT LIMITATION, LOSS OF PROPERTY, PERSONAL INJURY, LOSS OF BUSINESS OR PROFITS OR OTHER ECONOMIC LOSSES, OR STATUTORY OR EXEMPLARY DAMAGES, WHETHER IN NEGLIGENCE, WARRANTY, STRICT LIABILITY, OR OTHERWISE.

This warranty is given only to the first purchaser from a retail dealer. No warranty is given to subsequent transferees.

Warranty does not cover product failures caused by: failure to maintain, neglect, abuse, damage due to excess water, fire, normal wear, improper set up and use. Periodic maintenance is not covered.

This warranty is not in force until such time as a properly completed and digitally signed Installation/Warranty Registration has been received by WINCO within 30 days from the date of installation.

WARRANTY SERVICE

DO NOT send unit to WINCO® without first contacting our customer service department: 973-295-3899.

To initiate warranty service please visit our online portal:

<https://www.winco.us/contact-us/product-technical-support>

SCAN FOR ONLINE PORTAL

If having trouble or unable to scan, enter the web address listed above to access the online portal.



Please provide or have the following information available:

- Contact Name, E-mail, and Phone Number
- Company/Organization Name
- Model Number
- Serial Number
- Pictures or Supporting Documentation

Proof of purchase is required to extend warranty more than 1 year from date of shipment from the factory.

THE FOREGOING WARRANTY PROVISIONS ARE A COMPLETE AND EXCLUSIVE STATEMENT BETWEEN THE BUYER AND

SELLER. WINCO® NEITHER ASSUMES NOR AUTHORIZES ANY PERSONS TO ASSUME FOR IT ANY OTHER OBLIGATION OR LIABILITY IN CONNECTION WITH SAID EQUIPMENT.

Examples of items not covered under warranty, but not limited to just these items:

1. Natural disasters (ie: earthquakes, tornadoes, hurricanes, etc.), fire, water damage, burglary, accident, theft.
2. Freight damage.
3. Improper installation or alteration of equipment.
4. Use of generic or after-market parts.
5. Repairs made by anyone other than a WINCO® designated service provider.
6. Lubrication.
7. Expendable wear parts, adjustable feet, blown fuses, lamps, etc.
8. Normal product maintenance.
9. Misuse or abuse.
10. Normal wear and tear items such as light bulbs, fuses, and exterior finishes.

Warranty voided if:

1. Product is altered by user
2. Serial number plate is removed
3. Product is installed in a prison or any correctional facility.

Please keep this manual in a safe place for future use!



Models: GSS-04 and GSS-04-I

www.wincous.com