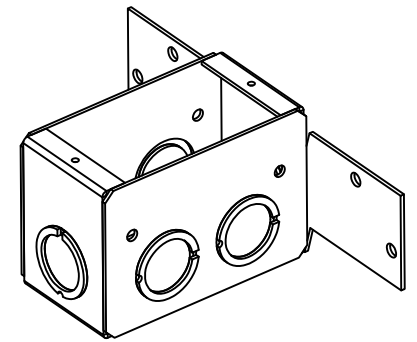
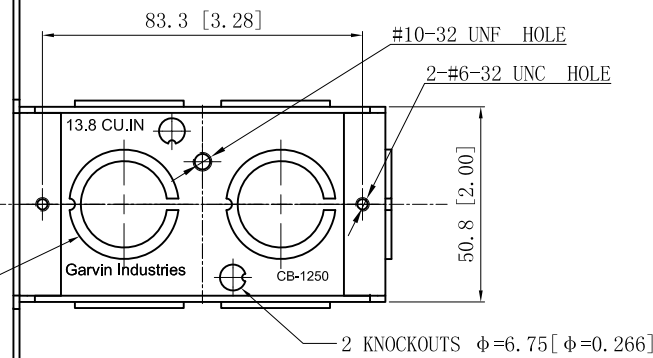
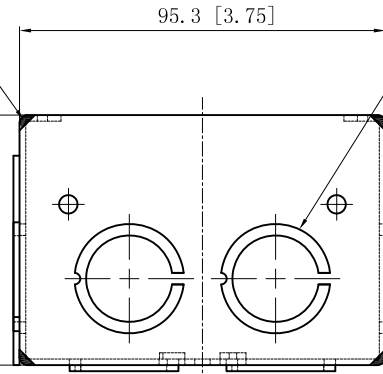


SIDES	BOTTOM
5 1/2"-3/4" MOON KNOCKOUTS	2 KNOCKOUTS
	2 1/2"-3/4" MOON KNOCKOUTS
Material: Steel-0.0625"-G60 Galvanized	

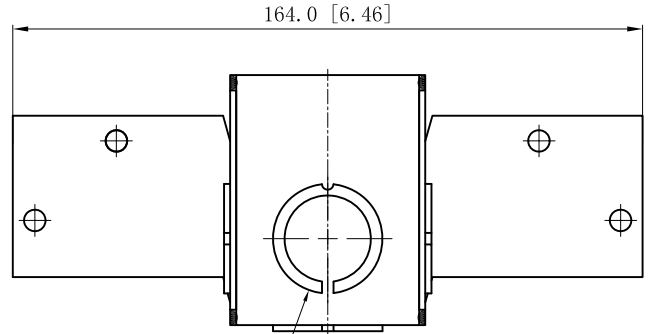
2 1/2"-3/4" MOON KNOCKOUTS  $\phi = 22.50$  [ $\phi = 0.886$ ]  
 $\phi = 28.50$  [ $\phi = 1.122$ ]



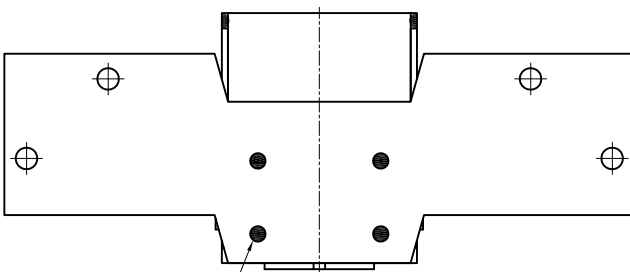
8 PLACES SPOT WELDING



4 1/2"-3/4" MOON KNOCKOUTS  $\phi = 22.50$  [ $\phi = 0.886$ ]  
 $\phi = 28.50$  [ $\phi = 1.122$ ] MIRROR



4 PLACES SPOT WELDING



1/2"-3/4" MOON KNOCKOUTS  $\phi = 22.5$  [ $\phi = 0.89$ ]  
 $\phi = 28.5$  [ $\phi = 1.12$ ]

This data sheet is for reference only .GARVIN INDUSTRIES reserves the right to make changes to the design without prior notice.

DESCRIPTION
TRADE REFERENCE TERMS

STANDARD PACKING

<b>GARVIN INDUSTRIES</b>		
TITLE SOLID MASONRY BOX 2-1/2" DEEP		
SIZE A4	DWG NO. CB-1250	REV
DATA SHEET		
www.garvinindustries.com		