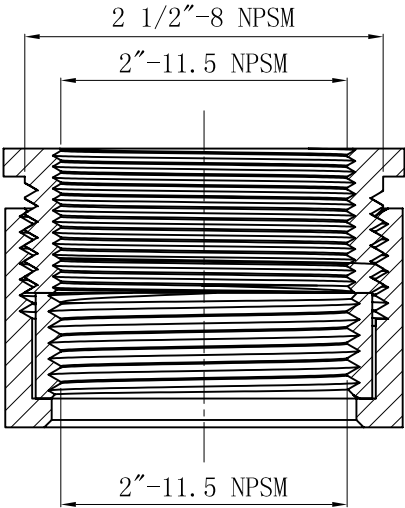
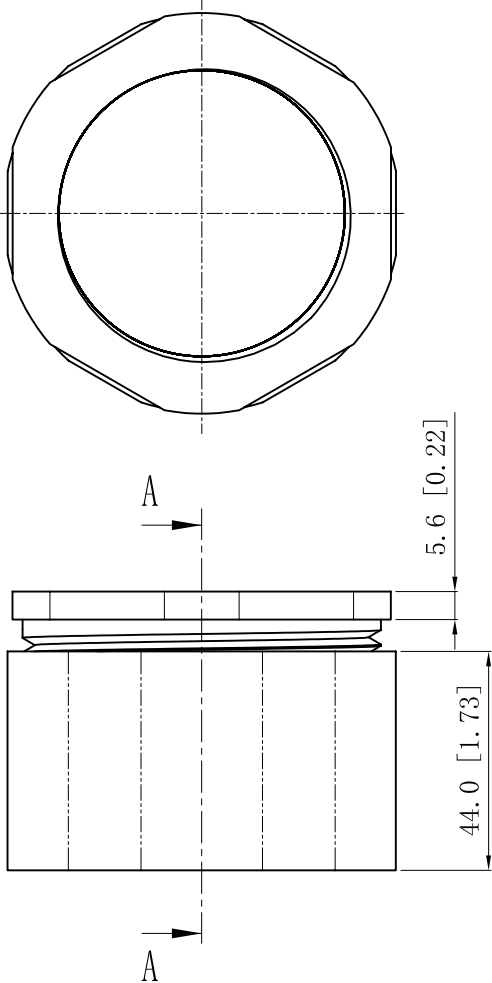
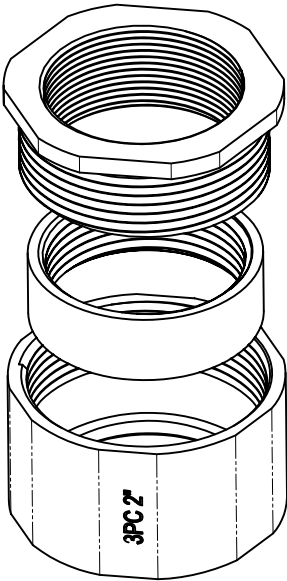


SIDES	BOTTOM
Material:malleable casting,Finish:Zinc plated	



CUTAWAY VIEW A-A

DESCRIPTION
TRADE REFERENCE TERMS

This data sheet is for reference only .GARVIN INDUSTRIES reserves the right to make changes to the design without prior notice.			
STANDARD PACKING	GARVIN INDUSTRIES		
10 PCS	TITLE THREE-PIECE COUPLING		
	SIZE A4	DWG NO. 3PC200	REV
	DATA SHEET		