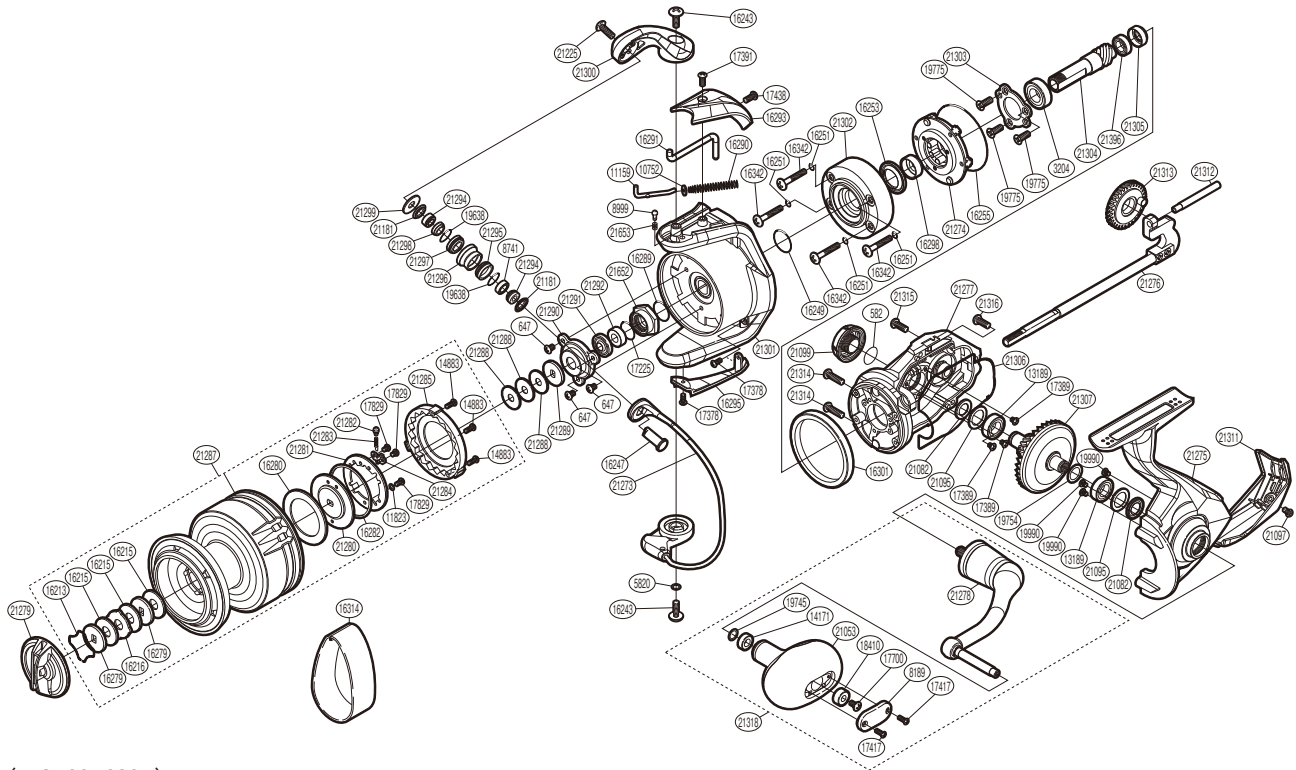


SHIMANO

SARAGOSA

SRG8000SWAHG



(51SF30P082X)

#	Part No.	Description	#	Part No.	Description	#	Part No.	Description
582	108WH	O Ring	17378	10L1R	Screw	21288	10BXX	Spool Washer
647	10QG5	Screw	17389	10LHN	Screw	21289	10E41	Spool Support
3204	10BGA	Ball Bearing	17391	10LFK	Screw	21290	10E3R	Nut Lock Plate
5820	105AA	Washer	17417	10L1T	Screw	21291	10E3Q	Bearing Water Proof
8189	108SM	Handle Knob I.D. Plate	17438	10LFF	Screw	21292	10E40	Main Shaft Spacer
8741	10K67	Ball Bearing	17700	10LFA	Screw	21294	10E3W	Line Roller Support Collar
8999	10HEA	Click Pin	17829	10L67	Screw	21295	10E4C	Line Roller Bushing
10752	10TYE	Bail Spring Guide A Support	18410	10EU0	Handle Knob Bushing A	21296	10E43	Line Roller
11159	105LV	Bail Spring Guide A	19638	1015S	O Ring	21297	10E4D	Line Roller Bushing B
11823	10PLT	Washer	19745	104FH	Washer	21298	10E4E	Line Roller Collar
13189	104PT	Ball Bearing	19754	10DKJ	Washer	21299	10E3S	Line Roller Plate
14171	104UJ	Handle Knob Bushing B	19775	100WY	Screw	21300	10E8J	Bail Arm
14883	10LV0	Screw	19990	1055H	Screw	21301	10E8K	Rotor
16213	10B8Q	Drag Washer Retainer	21053	10R8C	Handle Knob Assembly	21302	10E3J	Roller Clutch Waterproof Cover
16215	10348	Drag Washer	21082	10TGJ	Bearing Water Proof	21303	10E49	Bearing Retainer
16216	102Z9	Eared Washer	21095	10BGF	Washer	21304	10E3U	Pinion Gear
16243	103UN	Screw	21097	10LHR	Screw	21305	10E3P	Bushing
16247	10Q3H	Line Roller Support	21099	101HW	Handle Screw Cap	21306	10E3M	Body Seal
16249	108WV	O Ring	21181	100X7	Line Roller Seal	21307	10E48	Drive Gear
16251	108WW	O Ring	21225	1008N	Screw	21311	1002R	Rear Protector
16253	10MH2	Roller Clutch Water Proof	21273	10TD1	Bail Assembly	21312	10E3V	Oscillating Guide
16255	108WX	Roller Clutch O Ring	21274	10TCX	Roller Clutch Assembly	21313	10E46	Oscillating Gear
16279	10BC9	Key Washer	21275	10TCV	Side Cover	21314	10L9U	Screw
16280	10C1B	Drag Washer	21276	10OLS	Main Shaft Assembly	21315	10TNB	Screw
16282	10HQK	Spool Drag Disk Seal	21277	10TDO	Body Assembly	21316	10E47	Screw
16289	108WT	O Ring	21278	10TCS	Handle Shank Assembly	21318	10E3X	Handle Assembly
16290	105LL	Bail Spring	21279	10E4B	Drag Knob	21396	10S63	Ball Bearing
16291	106KN	Bail Trip Lever	21280	10E4A	Spool Drag Disk	21652	100KF	Rotor Nut
16293	10880	Bail Spring Cover	21281	10E3L	Drag Plate Washer	21653	10HEL	Click Spring
16295	10MND	Bail Hold Support Guard	21282	10E3H	Drag Click			
16298	10K7S	Rotor Ring	21283	10E3Z	Drag Click Spring			
16301	104G8	Friction Ring	21284	10E45	Drag Click Spring Holder			
16342	10A6S	Screw	21285	10E3N	Drag Click Ratchet			
17225	1090A	O Ring	21287	10E42	Spool Assembly	16314	10P3X	Line Band (Accessory)

Please note that the number of adjusting washers may not be the same as shown in the exploded views.
(Adjustment will vary with each individual product.)

(240208)_011