



PUT1800MD

4-Slice Medium Duty Commercial Toaster Instruction Manual

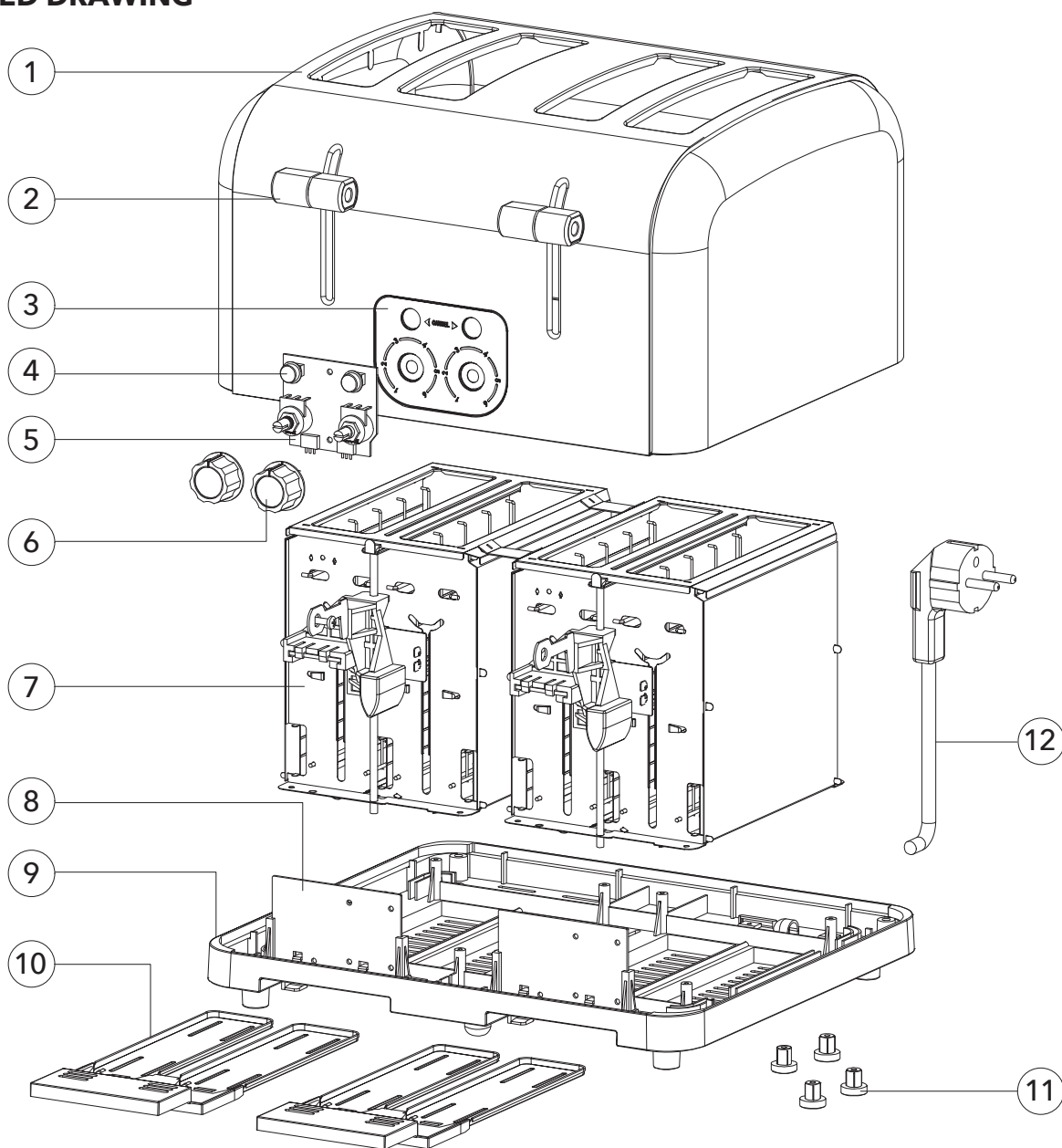
This manual contains important information regarding your Adcraft unit. Please read this manual thoroughly prior to equipment set-up, operation, and maintenance. Failure to comply with regular maintenance guidelines outlined in this manual may void the warranty.

IMPORTANT SAFEGUARDS

- Please read all the instructions to familiarize yourself with all the parts and operations before use.
- Keep cords, plugs, and other electrical components away from liquids to protect against electrical shock.
- Unplug the toaster when not in use and before cleaning.
- **DO NOT** touch hot surfaces.
- **DO NOT** operate the toaster with a damaged electrical cord or plug.
- **DO NOT** operate the toaster after it has malfunctioned or been damaged in any way.
- **DO NOT** operate the toaster outdoors.
- Guarantee that your outlet and voltage are correct for the plug type before operating the toaster.
- For commercial use only.
- Using accessories not recommended by the manufacturer may result in injury.
- **DO NOT** store anything on top of the toaster.
- **DO NOT** use the toaster near flammable materials and products.
- **DO NOT** insert metal utensils or oversized foods inside the toaster slots, as they may cause a fire and heighten the risk of electrical shock.
- **DO NOT** clean the toaster with metal scouring pads, as it can heighten the risk of electrical shock.
- **DO NOT** place paper, cardboard, or plastic in the toaster.
- Place the unit on a flat, sturdy surface that is well ventilated.
- **DO NOT** leave the appliance unattended during use.
- Only trained adults should operate the toaster
- The toaster is not intended for use by persons with reduced physical sensory or mental capabilities, or lack of experience and knowledge unless they have been given supervision or instruction concerning the use of the appliance by a person responsible for their safety.

SPECIFICATIONS	
MODEL:	PUT1800MD
VOLTAGE:	120V
HERTZ:	60HZ
WATTAGE:	1800W
DIMENSIONS:	12.07"W x 10.47"D x 7.87"H
UNIT WEIGHT:	6 lbs.
PLUG:	NEMA 5-15P

EXPLODED DRAWING

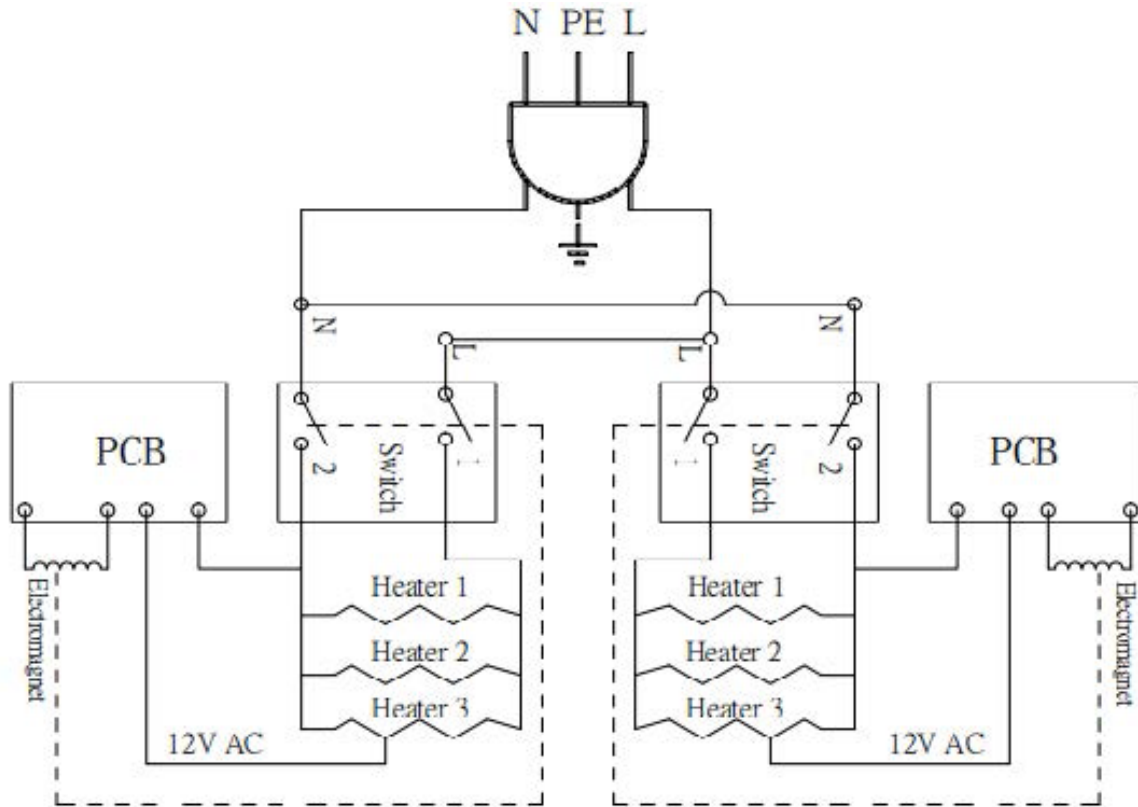


EXPLODED PART LIST

NO.	PART NAME	QTY
1	Shell	1
2	Lift Lever	2
3	Control Panel	1
4	Cancel Button	2
5	Potentiometer	1
6	Gear Knob	2
7	Inner Cabinet Assembly (with heating element)	1

NO.	PART NAME	QTY
8	PCB Board	2
9	Base	1
10	Crumb Tray	2
11	Power Cord	1
12	Foot	4

CIRCUIT DIAGRAM



BEFORE FIRST USE:

NOTE: Do not use any sprays or abrasive cleaners when cleaning the toaster as it can cause damage.

1. Use a damp cloth to wipe the exterior of the toaster.
2. Allow the lubricant to burn off heating elements. A light amount of smoke is normal during this process.

USING YOUR TOASTER

1. Plug in your toaster into the correct outlet.
2. Load your bread into the slots.
3. Set your desired toasting level which ranges from 1 (very light) to 6 (dark).

GEAR	1	2	3	4	5	6
TIME IN SECONDS	55	85	115	150	180	200

4. To begin the toasting process, press the carriage knob down until it engages at the bottom.
5. Once the toasting process is complete, the bread will automatically pop up.
6. Press the 'Cancel' button if you want to stop toasting.



MAINTENANCE & CLEANING

NOTE: To maintain cleanliness and increase service life, the grills should be cleaned daily. Do not immerse the grill in water or any other liquid.

1. Unplug the unit and allow it to cool.
2. Use a damp cloth to gently wipe the exterior with non-abrasive cleaners.

NOTE: Do not immerse the toaster in water when cleaning the toaster, as it may cause damage and electrical shock.

TROUBLESHOOTING

PROBLEM	SOLUTION
The toaster is not getting hot or toasting	Check that the browning knob is set to your desired setting. Check to make sure the carriage knob is pressed down and engaged.
A metallic sound or buzzing is occurring	Unplug the toaster. Do not attempt to disassemble the toaster. Contact customer service for the next steps.
Toast is often burned or overcooked	Check that the browning knob is set to your desired setting. Contact customer service if you continue encountering issues.

1-YEAR LIMITED WARRANTY

Admiral Craft Equipment Corp. (the "Company") warrants this product (the "Product") will be free from failures in material and workmanship for one (1) year from the date of original purchase with proof of purchase, provided that the Product is operated and maintained in conformity with the Owner's Manual. This Limited Warranty is non-transferable. During this period, your exclusive remedy is repair or replacement without charge of the Product or any component found to be defective at the Company's discretion. If the Product or any component is no longer available, the Company will replace it with a similar one of equal or greater value. This Limited Warranty is void if the Product is used with voltage other than 120 Volts. **THIS WARRANTY IS IN LIEU OF ALL IMPLIED WARRANTIES, INCLUDING WARRANTIES OF MERCHANTABILITY, FITNESS FOR A PARTICULAR PURPOSE, PERFORMANCE, OR OTHERWISE, WHICH ARE HEREBY EXCLUDED. IN NO EVENT SHALL THE COMPANY BE LIABLE FOR ANY DAMAGES, WHETHER DIRECT, INDIRECT, INCIDENTAL, FORESEEABLE, CONSEQUENTIAL, OR SPECIAL ARISING OUT OF OR IN CONNECTION WITH THIS PRODUCT INCLUDING DAMAGES ARISING FOR FOOD OR BEVERAGE SPOILAGE CLAIMS.**

You may have other legal rights depending upon where you live. Some States or Provinces do not allow limitations on warranties so the foregoing may not apply to you.

WARRANTY EXCLUSIONS

IMPROPER ELECTRICAL CONNECTIONS:

The Company is not responsible for the repair or replacement of failed or damaged components resulting from electrical power failure, the use of extension cords, low voltage, or voltage spikes to the Product.

IMPROPER USAGE:

This Limited Warranty does not cover failure or other damages to the Product resulting from (i) improper usage or installation or failure to clean and/or maintain the Product as set forth in the Owner's Manual; or (ii) accident, misuse, abuse, negligence, or modification or alteration of the Product.

CONSUMABLES:

This Limited Warranty does not include consumables or wear-and-tear items such as legs, feet, plastic component parts, splash shields, filters, gaskets, and non-stick cooking surfaces.

ADJUSTMENTS & CALIBRATIONS:

Leveling, tightening of fasteners, or utility connections normally associated with the original installation are the responsibility of the dealer, installer, or the end user and not the responsibility of the Company and will not be considered warranty issues.

If you think the Product has failed, or requires service, within its warranty period, please contact the Company's Customer Care Department through our website at: www.admiralcraft.com "Service" --> "Technical Support Request". A receipt proving the original purchase date will be required for all warranty claims, handwritten receipts are not accepted. You may also be required to return the Product for inspection and evaluation. Return shipping costs are not refundable. The Company is not responsible for returns lost in transit.

This Limited Warranty is Valid only in the USA and Canada.