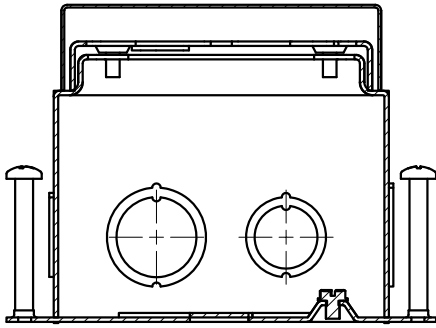
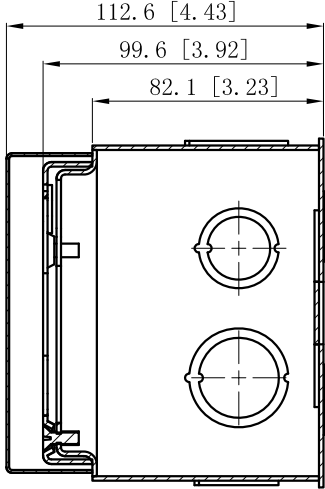


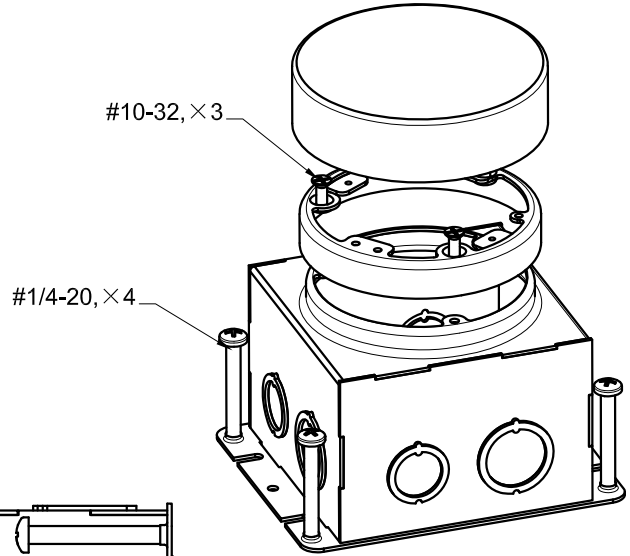
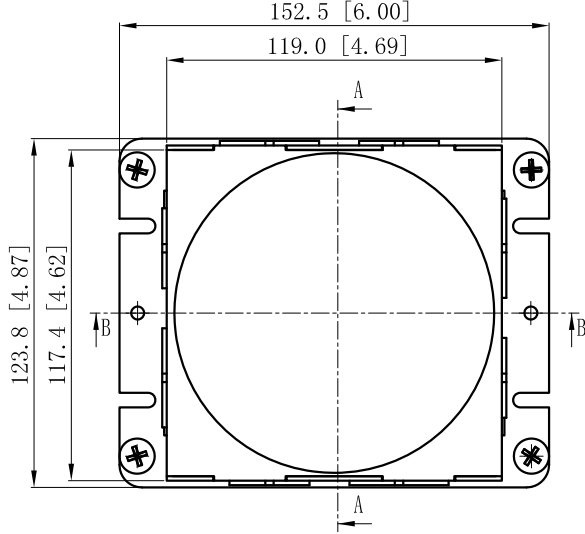
SIDES	BOTTOM
4 3/4"-1/2" KNOCKOUTS	3 1/2" KNOCKOUTS
4 1"-3/4" KNOCKOUTS	2 3/4" KNOCKOUTS
	1 Gound hump
Material:Steel-0.0625"-G60 Galvanized	
3 pcs #10-32×1/2 Screws Installed	
4 pcs #1/4-20×2 Screws Installed	
1 PCS #10-32×3/8 green zin plate Screws Installed	



CUTAWAY VIEW B-B



CUTAWAY VIEW A-A



#10-32, ×3

#1/4-20, ×4

4 × 1"-3/4" KNOCKOUTS $\phi=35.2$ [$\phi=1.385$]
 $\phi=28.4$ [$\phi=1.118$]

4 × 3/4"-1/2" KNOCKOUTS $\phi=28.4$ [$\phi=1.118$]
 $\phi=22.3$ [$\phi=0.878$]

DESCRIPTION
TRADE REFERENCE TERMS

This data sheet is for reference only. GARVIN INDUSTRIES reserves the right to make changes to the design without prior notice.

STANDARD PACKING	<h1 style="margin: 0;">GARVIN INDUSTRIES</h1> <h2 style="margin: 0;">Flush Rnd FIr Bx-4" Deep</h2>		
6 PCS			
	TITLE		
	SIZE	DWG NO.	REV
	A4	FB400C	
	DATA SHEET		