

HOOKER[®]





— FURNITURE —

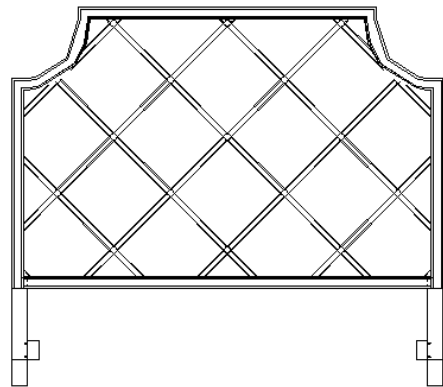
Martinsville, VA 24112

ASSEMBLY INSTRUCTION

ITEM# 5875-90367-95 Diamont 6/0-6/6 Panel Headboard
5875-90351-95 Diamont 5/0 Panel Headbaord

Caution: Please make sure you have all parts indicated below prior to assembly. This headboard is heavy and can best be assembled with the help of two people.

NO.	HARDWARE LIST		Q'TY
M		Allen wrench	1
N		Bolt	8
O		Lock washer	8
P		Flat washer	8



Note:

1. Height of the 6/0 - 6/6 Panel Headboard can be adjusted with or without extension blocks (70" height and 76" height).
2. Height of the 5/0 Panel Headboard can be adjusted with or without extension blocks (68" height and 74" height).
3. 6/0 - 6/6 Panel Headboard can't be adjusted to 76" with extension blocks if customer wants to add canopy due to the total height limit for the whole bed in the room.

Assembly steps –76" height for 6/0 - 6/6 Panel Headboard

–74" height for 5/0 Panel Headboard

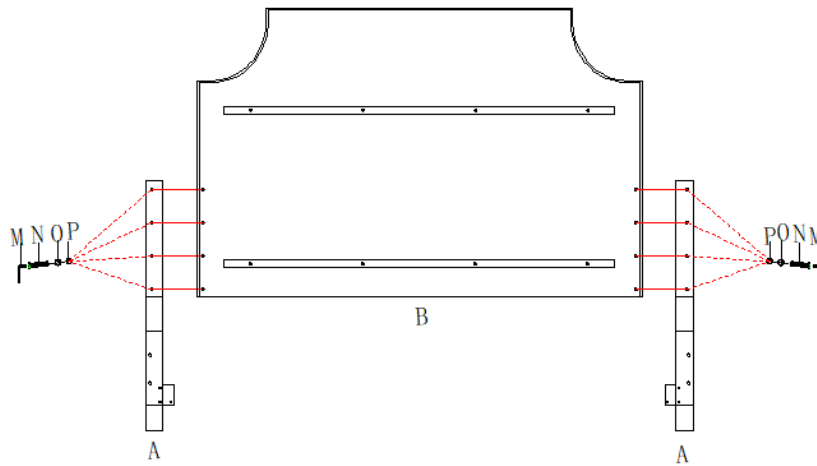


Diagram 1

1. Place Headboard on a soft surface to prevent it from being scratched.
2. Attach posts (A) to each side of panel headboard (B) by using flat washers (P), lock washers (O) and bolts (N), tighten all with Allen wrench (M) in clockwise direction. See diagram 1.

**Assembly steps – 70" height for 6/0 - 6/6 Panel Headboard
– 68" height for 5/0 Panel Headboard**

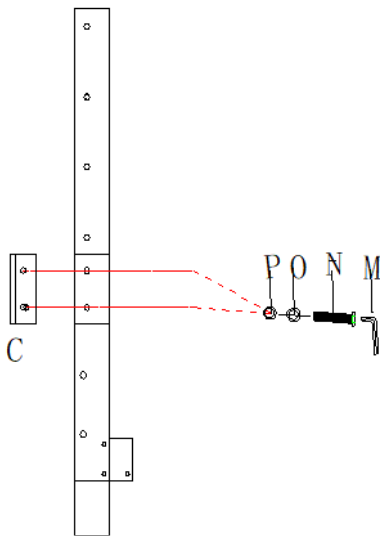


Diagram 2

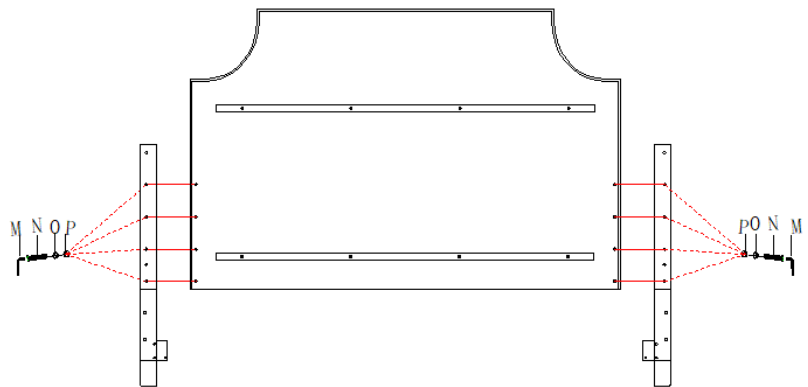


Diagram 3

1. Unscrew bolts (N), lock washers (O) and flat washers (P) from posts. Then remove extension blocks (C) from the posts directly (See Diagram 2).
2. Attach posts to each side of panel headboard, use flat washers (P), lock washers (O) and bolts (N), secure all with Allen wrench (M) (See Diagram 3).

Cleaning Instruction: Clean finished parts with a mild dishwashing liquid and water solution on a damp cloth. Polish the finish with soft cloth and an industry recognized furniture polish.