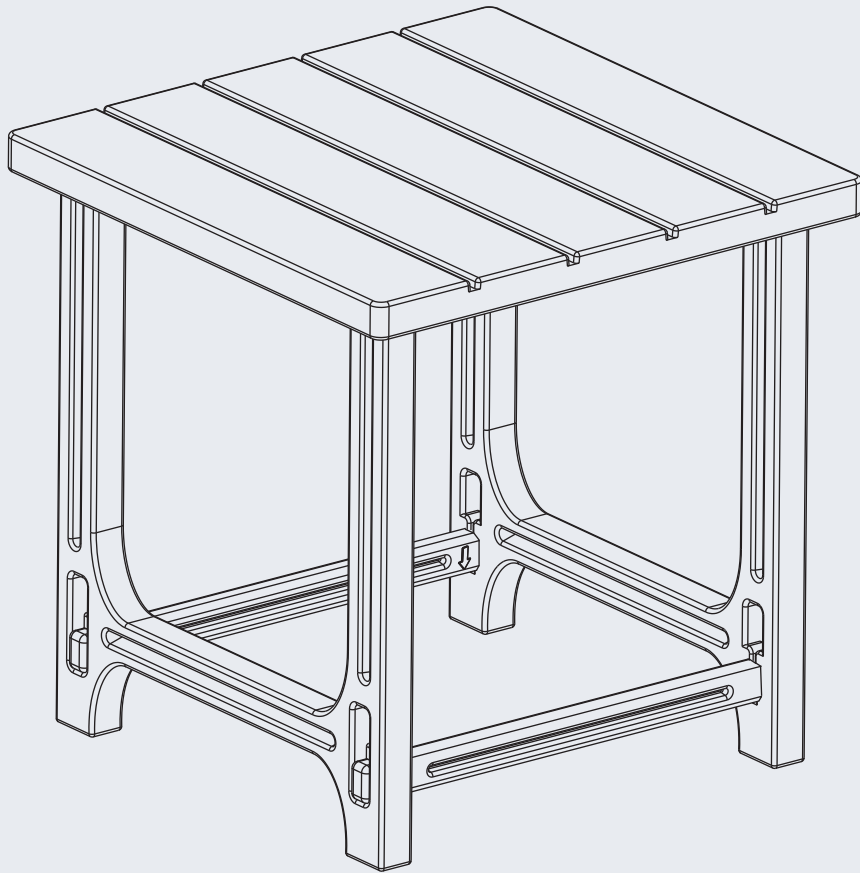


INSTRUCTION MANUAL



Outdoor Poly Side Table

V1.0

! CARE & MAINTENANCE

Please keep this instruction for your future reference.

- Be careful when assembling, avoid damaging the painted surface.
- Clean the table with lukewarm water, mild detergent & soft cloth.
- Firmly secure all connections before use. Do not use any part of this item as a step ladder.
- Do not use or store this item in the proximity of open flame or flammable/combustible chemicals.
- Be aware that some parts are heavy and have sharp edges.
- Please do not exceed the weight limitations of this item.

NO TOOLS REQUIRED



TABLE
150 LBS
CAPACITY



1 PERSON
ASSEMBLY

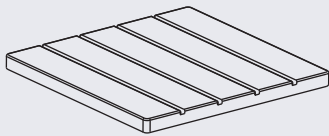


UP TO 10 MIN.
ASSEMBLY

PARTS

A

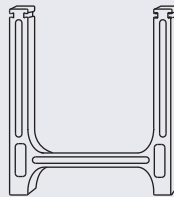
TABLE TOP



1 PC

B

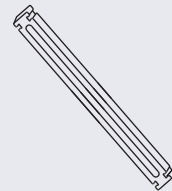
TABLE LEG



2 PCS

C

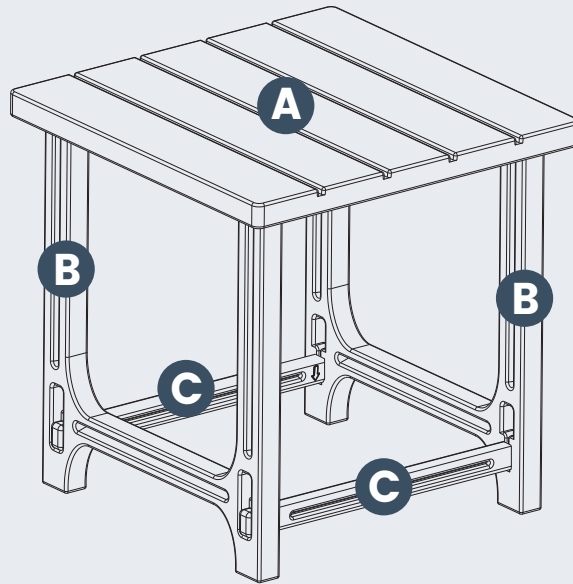
RAIL



2 PCS

PRODUCT ASSEMBLY – OVERALL VIEW

Look at following overall view of this table and learn the exact position of each part to be assembled.

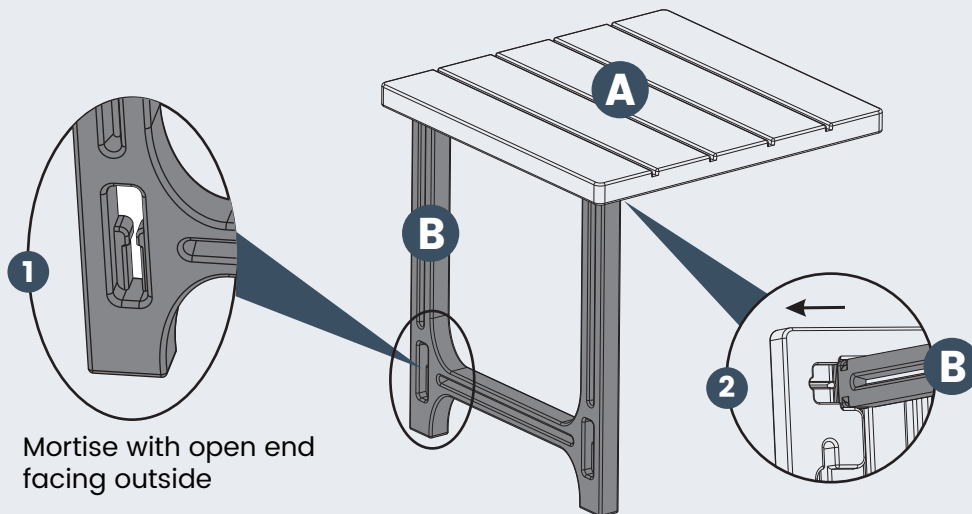


PRODUCT ASSEMBLY

1

Pick out **Part A Table Top** and **Part B Table Leg** from package and assemble as follows.

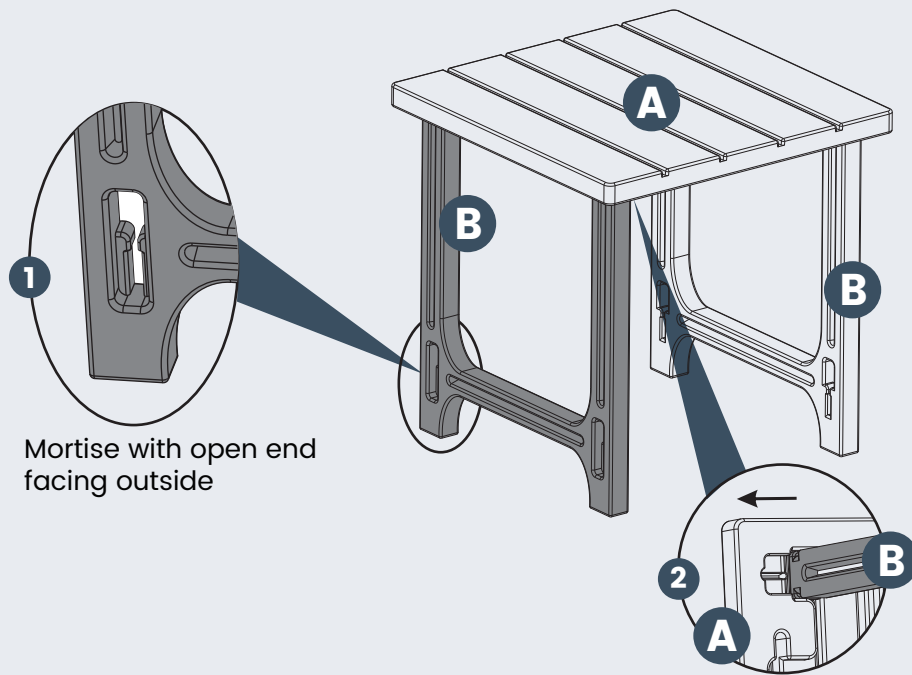
1. Check the mortise in the leg and make sure the open end is facing outside (Figure 1).
2. Plug the top tenon of **Part B Table Leg** into the groove in the bottom of **Part A Table Top**. Push the leg towards the edge of table top until the tenon is locked firmly in the groove (Figure 2).



PRODUCT ASSEMBLY

2

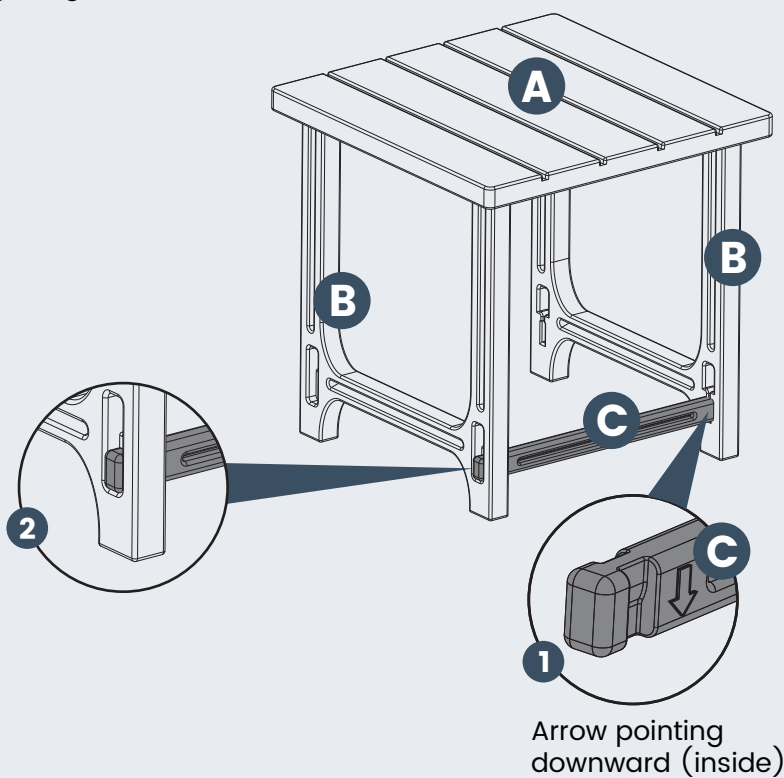
Do the same to attach another **Part B Table Leg** to **Part A Table Top**.



3

Place **Part C Rail** between 2 pcs of **Part B Table Legs**. Make sure the arrows are inside and pointing downward (Figure 1).

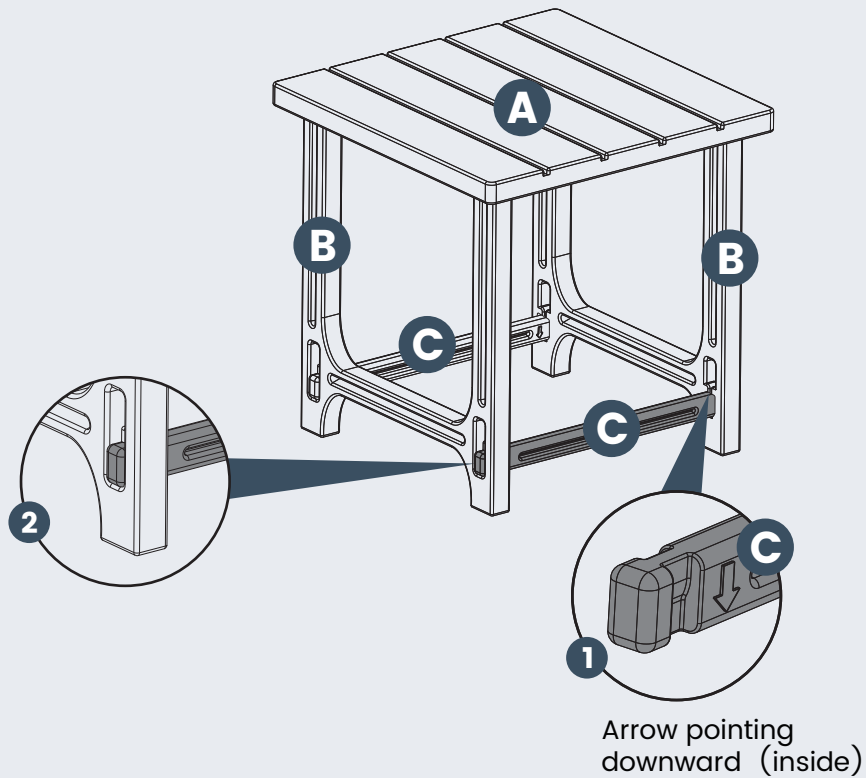
Press hard on **Part C Rail** to make the tenons lock firmly into the mortise in the legs (Figure 2).



PRODUCT ASSEMBLY

4

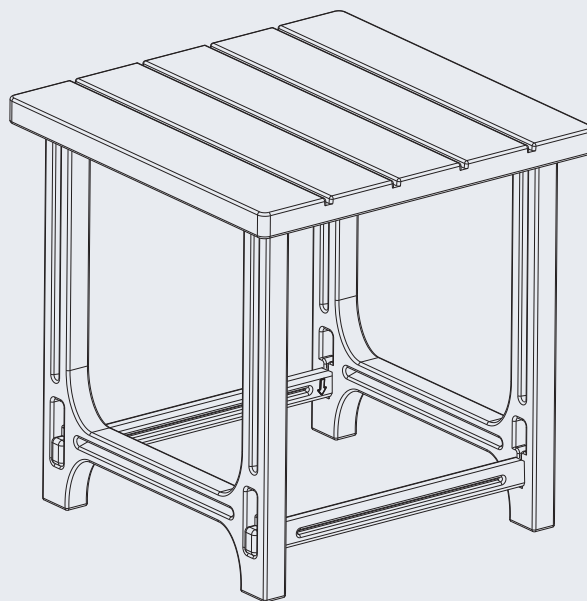
Do the same to attach another **Part C Rail** between 2 pcs of **Part B Table Legs**.



5

Check and tighten all the connections again to ensure the table is steady enough.

Enjoy the table now.



CLEANING TIPS

REGULAR CLEAN: Use a mixture of warm water and mild soap. Gently scrub the surface with a soft bristle brush to remove any dirt or stains.

QUICK CLEAN: You can simply wipe down the furniture with a damp cloth.

Regular cleaning not only preserves the aesthetic appeal of your furniture, but also helps extend its lifespan.