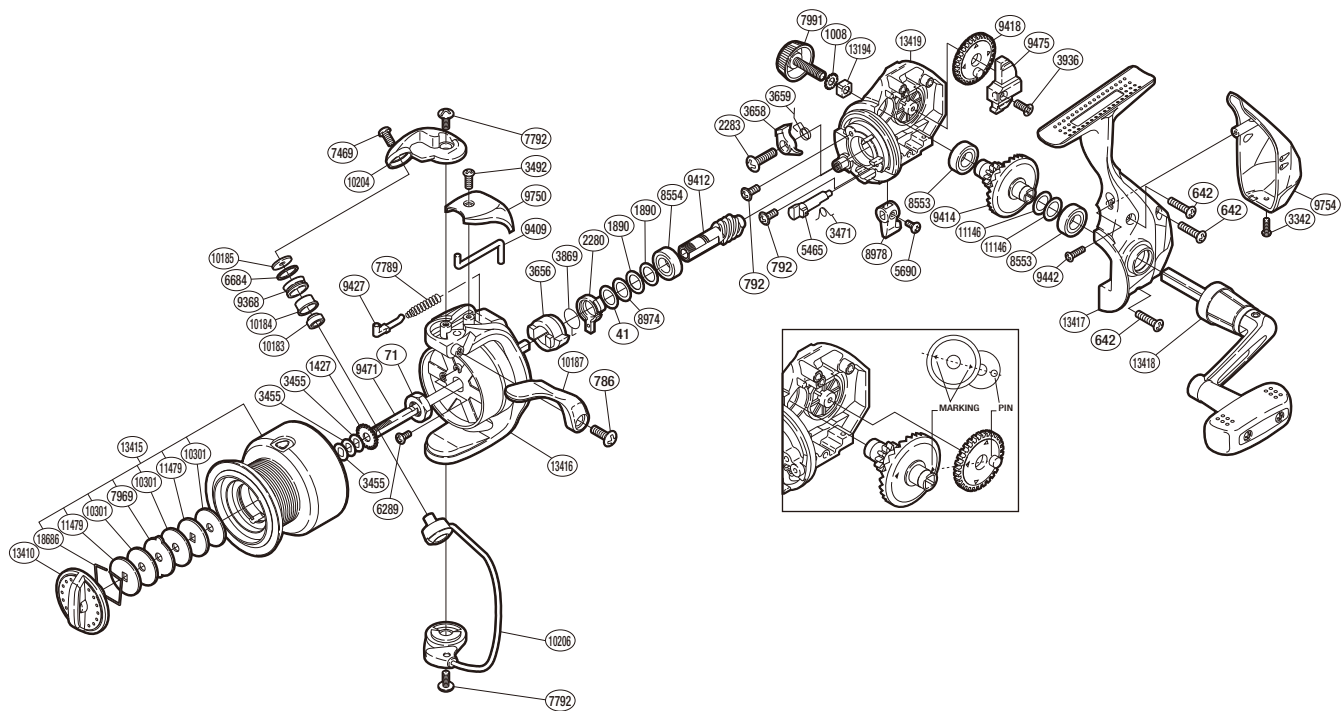


SHIMANO

SYNCOPATE

SC-2500FG



(51SE552506U)

#	Part No.	Description	#	Part No.	Description	#	Part No.	Description
41	10JDC	Washer	5690	10MPW	Screw	9475	104KW	Oscillating Slider
71	10MSQ	Rotor Nut	6289	10MPL	Screw	9750	10DDB	Bail Spring Cover
642	10M35	Screw	6684	10KFD	Line Roller Spacer	9754	10AN9	Rear Protector
786	103J1	Screw	7469	10PMJ	Screw	10183	10K66	Ball Bearing
792	10M29	Screw	7789	105FW	Bail Spring	10184	10PFH	Line Roller Bushing
1008	105N5	Handle Lock Washer	7792	103D8	Screw	10185	10PJF	Line Roller Washer
1427	103MG	Spool Support	7969	102XS	Eared Washer	10187	10FQT	Quick-fire Li Trigger
1890	1074V	Washer	7991	10P4L	Handle Screw Cap	10204	10DEZ	Bail Arm
2280	1078E	Anti-reverse Lock Out	8553	107AT	Ball Bearing	10206	10QDR	Bail Assembly
2283	103UV	Screw	8554	107FE	Ball Bearing	10301	10N56	Drag Washer
3342	103C0	Screw	8974	10JDD	Washer	11146	10JDB	Washer
3455	10BXN	Spool Washer	8978	10JG2	Anti-Reverse Lever	11479	10B9T	Key Washer
3471	1057E	Anti-Reverse Cam Spring	9368	10JLF	Line Roller	13194	104NX	Handle Screw Lock
3492	103DC	Screw	9409	10F1B	Bail Trip Lever	13410	10M7A	Drag Knob
3656	107ZH	Anti-Reverse Ratchet	9412	10LRS	Pinion Gear	13415	10K6F	Spool Assembly
3658	105G5	Anti-Reverse Pawl	9414	10M4H	Drive Gear	13416	10QFS	Rotor
3659	10675	Anti-Reverse Pawl Spring	9418	104WZ	Oscillating Gear	13417	10N0Z	Side Cover
3869	10L5G	Anti-Reverse Lock Out Spring	9427	105LT	Bail Spring Guide	13418	1054N	Handle Assembly
3936	10MGL	Screw	9442	10L1X	Screw	13419	10BQW	Body
5465	10DB9	Anti-Reverse Cam	9471	10PLA	Main Shaft	18686	10MZN	Drag Washers Retainer

Please note that the number of adjusting washers may not be the same as shown in the exploded views.
(Adjustment will vary with each individual product.)

(230827)_003