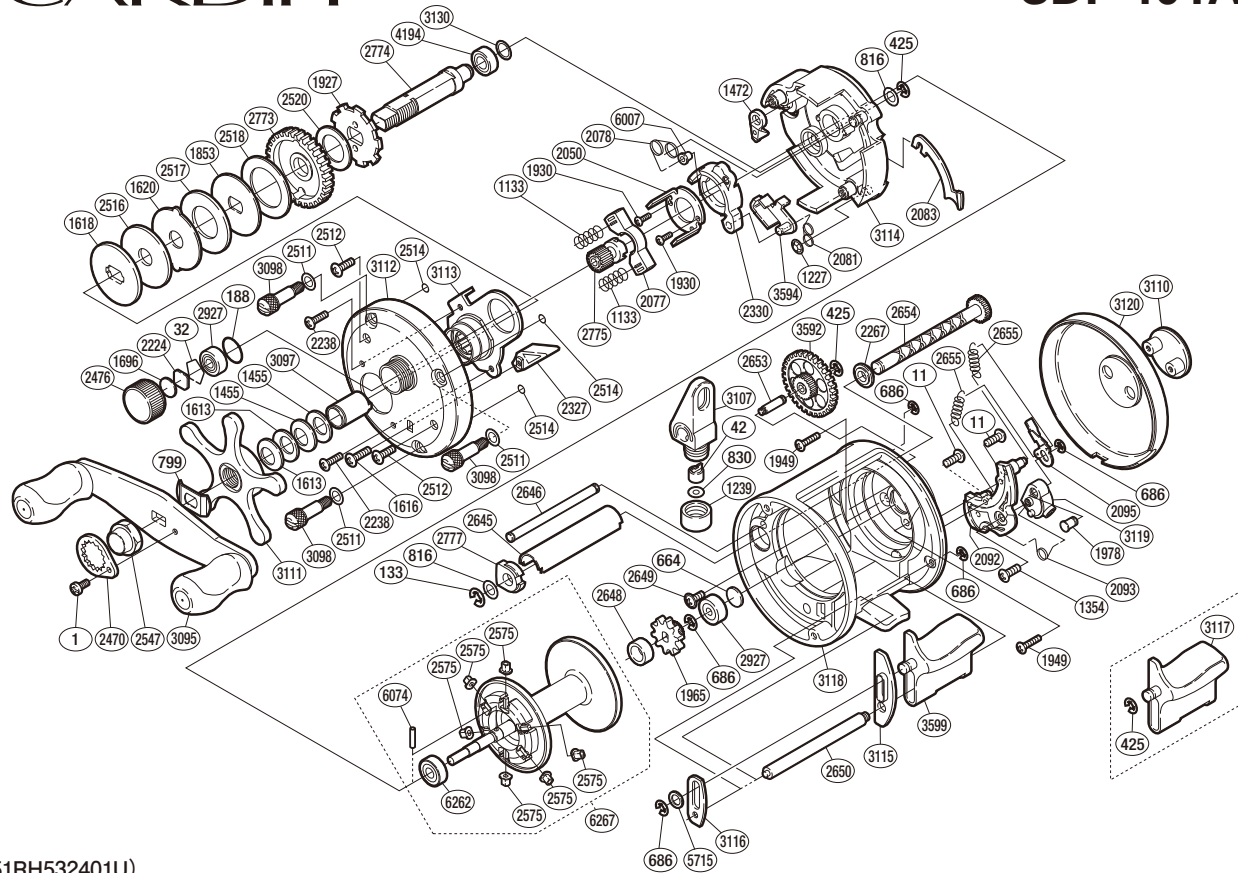


# SHIMANO

## CARDIFF

## CDF-401A



(51RH532401U)

#	Part No.	Description	#	Part No.	Description	#	Part No.	Description
1	10PVC	Screw	2077	10N1K	Yoke	2655	10NRN	Click Spring
11	10MT0	Screw	2078	10N1N	Retractor Spring	2773	109D8	Drive Gear
32	10GEW	Bearing Retainer	2081	10N21	Clutch Pawl Spring	2774	10MKF	Drive Shaft
42	10FFZ	Line Guide Pawl	2083	10GB4	Clutch Plate	2775	10AHA	Pinion Gear
133	105NJ	E Lock	2092	10F0B	Click Plate	2777	10HUF	Worm Bushing A
188	109EB	O Ring	2093	10HRL	Click Switch Spring	2927	105BZ	Ball Bearing
425	105NE	E Lock	2095	1054B	Click Pawl	3095	10TXE	Handle Assembly
664	1057S	Spacer B	2224	1085F	Spool Tension Spacer A	3097	10MAN	Roller Clutch Inner Tube
686	105NK	E Lock	2238	10LF8	Screw	3098	106BK	Side Plate Nut
799	107QJ	Friction Washer	2267	10HT2	Worm Bushing B	3107	10KCG	Line Guide
816	109F6	Washer	2327	10M5S	Return Pin Guide	3110	10LH4	Side I.D. Plate
830	10TZF	Spacer	2330	10LYQ	Clutch Cam	3111	10HMP	Star Drag
1133	104BL	Yoke Spring	2470	10QBK	Handle Nut Plate	3112	10HGX	Left Side Plate
1227	109H9	Push Nut (SPN-2)	2476	10KK2	Cast Control Cap	3113	10NZF	Roller Clutch Assembly
1239	10BHU	Pawl Cap	2511	10KF8	Washer	3114	10NZS	Set Plate
1354	103C7	Screw	2512	10LFB	Screw	3115	10GDR	Clutch Button Guide A
1455	1052E	Drag Spring Washer H	2514	10MB6	O Ring	3116	10GBF	Clutch Button Guide B
1472	10P1Y	Anti-Reverse Pawl	2516	10CJG	Drag Washer AG	3118	10F2S	One-Piece Frame
1613	10EW3	Drag Spring Washer L	2517	1072B	Drag Washer CG	3119	10HQY	Click Switch
1616	103GV	Screw	2518	10D2S	Drag Washer BG	3120	10P62	Right Side Plate
1618	10D4K	Key Washer C	2520	10D2M	Drive Shaft Washer B	3130	10HV5	Washer
1620	10D48	Eared Washer	2547	10FNP	Handle Nut	3592	10EXC	Idle Gear B
1696	10896	Cast Control Spacer B	2575	10AH1	Brake Collar	3594	10NZJ	Clutch Pawl
1853	10D47	Key Washer A	2645	10HVF	Level Wind Guard	3599	10TZL	Quick-Fire II Clutch Bar
1927	109BE	Anti-Reverse Ratchet	2646	10HW5	Stabilizer Bar	4194	105BP	Ball Bearing
1930	103NH	Screw	2648	10P6D	Idle Gear A Bush	5715	10G6D	Washer
1949	10LSR	Screw	2649	10K8W	Screw	6007	10F23	Retractor Spring Collar
1965	10AQA	Idle Gear A	2650	10N4V	Clutch Button Support Bar	6074	10P68	Spool Clutch Pin
1978	10HRM	Click Shaft	2653	10NS0	Idle Gear B Shaft	6262	10EX9	Ball Bearing
2050	10MB9	Clutch Cam Retainer	2654	10KC0	Worm Shaft	6267	100Q1	Spool Assembly

Please note that the number of adjusting washers may not be the same as shown in the exploded views.  
(Adjustment will vary with each individual product.)

(231115)\_011