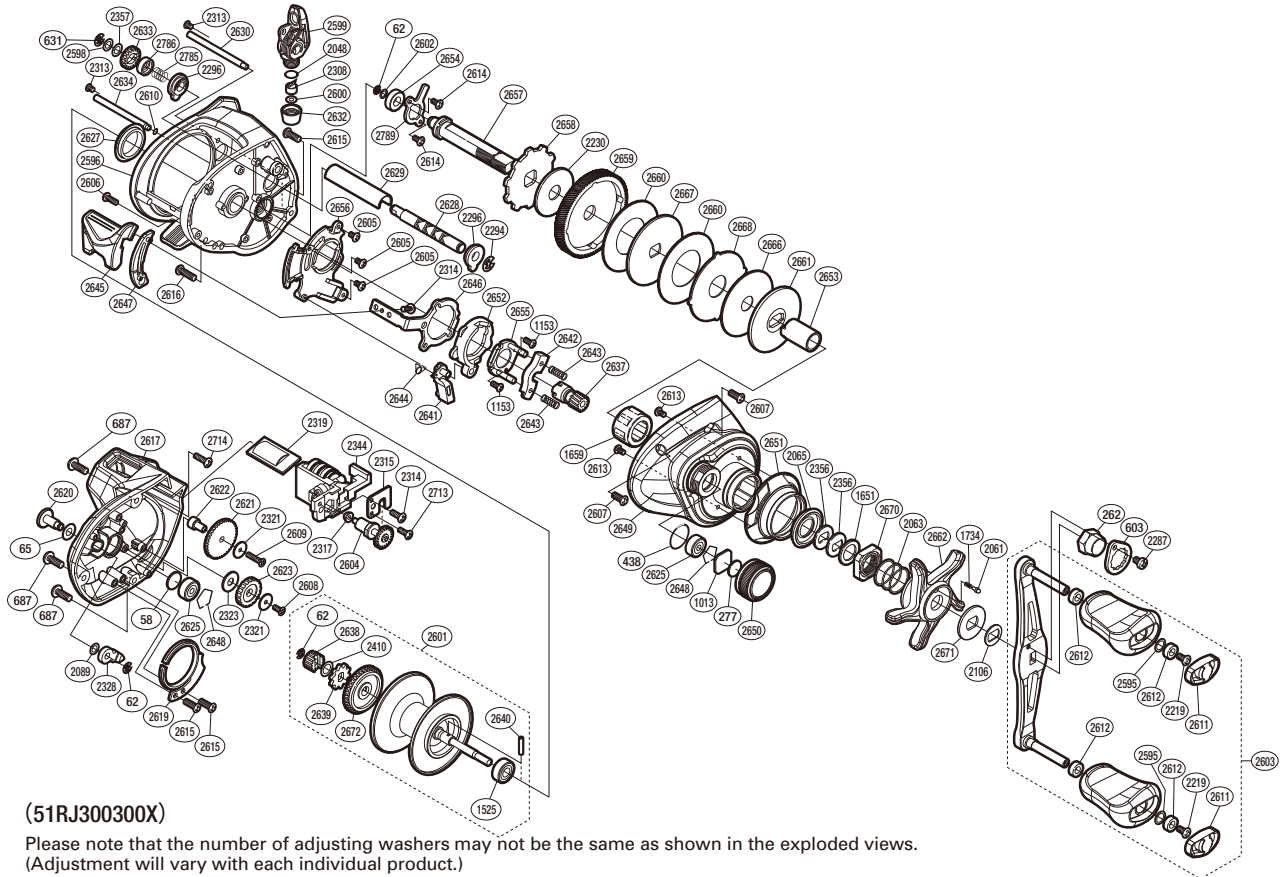


SHIMANO

TEKOTA S A-RB

TEKA300HGLC



(51RJ300300X)

Please note that the number of adjusting washers may not be the same as shown in the exploded views. (Adjustment will vary with each individual product.)

The (1659) Roller clutch cannot be replaced by the customer. To replace these parts, please request after-sales service.

| Part No. | Description | Part No. | Description | Part No. | Description |
|----------|---------------------------|----------|-----------------------|----------|--------------------------|
| TGT0058 | Spacer B | TGT2357 | Washer | TGT2637 | Pinion Gear |
| TGT0062 | E Lock | TGT2410 | Washer | TGT2638 | Idle Gear A |
| TGT0065 | Spacer A | TGT2595 | Washer | TGT2639 | Click Gear |
| TGT0262 | Handle Nut | TGT2596 | Frame Assembly | TGT2640 | Spool Clutch Pin |
| TGT0277 | Cast Control Spacer | TGT2598 | Spacer | TGT2641 | Clutch Pawl |
| TGT0438 | O Ring | TGT2599 | Line Guide Assembly | TGT2642 | Yoke |
| TGT0603 | Handle Nut Plate | TGT2600 | Washer | TGT2643 | Yoke Spring |
| TGT0631 | E Lock | TGT2601 | Spool Assembly | TGT2644 | Clutch Pawl Spring |
| TGT0687 | Screw | TGT2602 | Washer | TGT2645 | Clutch Button |
| TGT1013 | Spool Tension Spacer | TGT2603 | Handle Assembly | TGT2646 | Clutch Plate |
| TGT1153 | Screw | TGT2604 | Counter Gear Assembly | TGT2647 | Clutch Bar Guide B |
| TGT1525 | Ball Bearing | TGT2605 | Screw | TGT2648 | Bearing Retainer |
| TGT1651 | Star Drag Spacer | TGT2606 | Screw | TGT2649 | Right Side Plate |
| TGT1659 | Roller Clutch Bearing | TGT2607 | Screw | TGT2650 | Cast Control Cap |
| TGT1734 | Click Spring | TGT2608 | Screw | TGT2651 | Clutch Button Attachment |
| TGT2048 | O Ring | TGT2609 | Screw | TGT2652 | Clutch Cam |
| TGT2061 | Click Pin | TGT2610 | O Ring | TGT2653 | Roller Clutch Inner Tube |
| TGT2063 | Star Drag Spring | TGT2611 | Handle Knob Seal | TGT2654 | Drive Shaft Bushing |
| TGT2065 | Roller Clutch Water Proof | TGT2612 | Handle Knob Bushing | TGT2655 | Clutch Cam Retainer |
| TGT2089 | Washer | TGT2613 | Screw | TGT2656 | Clutch Guard |
| TGT2106 | Drive Shaft Shield | TGT2614 | Screw | TGT2657 | Drive Shaft |
| TGT2219 | Screw | TGT2615 | Screw | TGT2658 | Anti-Reverse Ratchet |
| TGT2230 | Drag Washer | TGT2616 | Screw | TGT2659 | Drive Gear |
| TGT2287 | Screw | TGT2617 | Left Side Plate | TGT2660 | Drag Washer |
| TGT2294 | E Lock | TGT2619 | Click Spring | TGT2661 | Key Washer |
| TGT2296 | Worm Bushing A | TGT2620 | Click Button | TGT2662 | Star Drag |
| TGT2308 | Line Guide Pawl | TGT2621 | Idle Gear B | TGT2666 | Drag Washer |
| TGT2313 | Screw | TGT2622 | Idle Gear B Support | TGT2667 | Key Washer |
| TGT2314 | Screw | TGT2623 | Idle Gear D | TGT2668 | Eared Washer |
| TGT2315 | Counter Frame Plate | TGT2625 | Ball Bearing | TGT2670 | Star Drag Nut |
| TGT2317 | Bushing | TGT2627 | Frame Center Seal | TGT2671 | Click Plate Retainer |
| TGT2319 | Counter Lens Assembly | TGT2628 | Worm Shaft | TGT2672 | Counter Gear A |
| TGT2321 | Idle Gear B Spacer B | TGT2629 | Level Wind Guard | TGT2713 | Screw |
| TGT2323 | Idle Gear B Spacer A | TGT2630 | Stabilizer Bar A | TGT2714 | Screw |
| TGT2328 | Click Pawl | TGT2632 | Pawl Cap | TGT2785 | Worm Shaft Spring |
| TGT2344 | Counter Unit Assembly | TGT2633 | Idle Gear C | TGT2786 | Worm Shaft Cam |
| TGT2356 | Drag Spring Washer | TGT2634 | Stabilizer Bar B | TGT2789 | Drive Shaft Retainer |