

**AXOR Starck**  
**Single-Hole Faucet 250, 1.2 GPM**  
Finishes : **chrome**    Part no. : **10129001**



## Description

### Features

- Aerated spray
- Flow: 1.2 GPM (4.5 L/Min)
- Joystick ceramic cartridge
- Does not include: Pop-up assembly

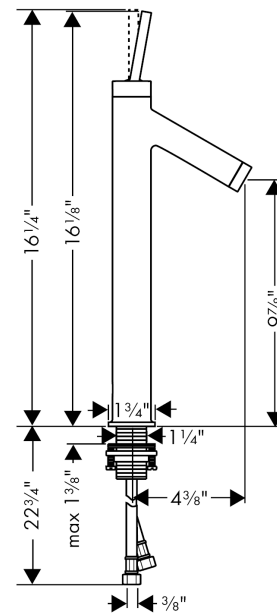
## Technology



## Product image



## Scale drawing

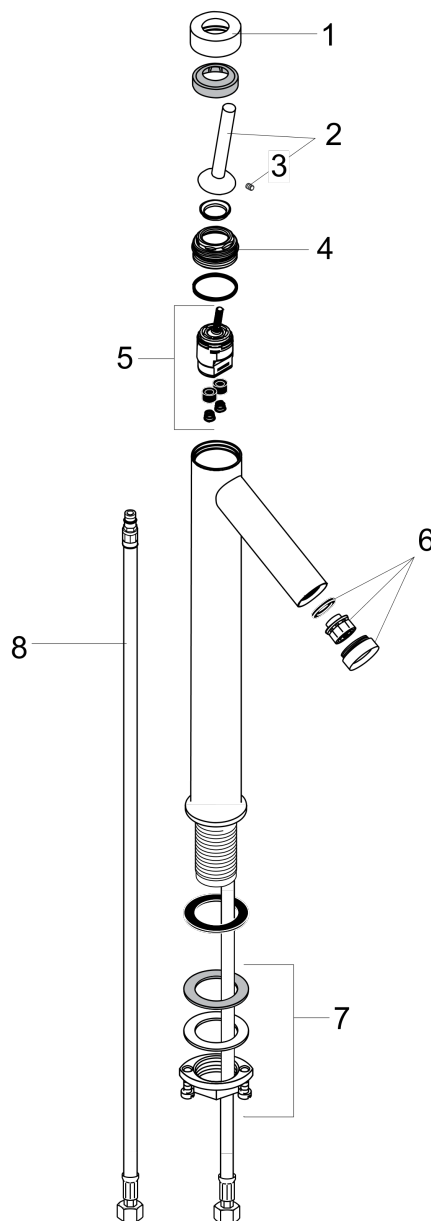


**AXOR Starck**  
**Single-Hole Faucet 250, 1.2 GPM**  
Finishes : **chrome**    Part no. : **10129001**



## Exploded drawing

Year of production: >07/16



**AXOR Starck**  
**Single-Hole Faucet 250, 1.2 GPM**  
 Finishes : **chrome**    Part no. : **10129001**



## Spare parts list

Year of production: >07/16

Pos.	Description	Part no.	PC	PU
1	flange	97155000	0	1
2	handle	10092000	0	1
3	hollow set screw M4x6	97767000	0	1
4	nut	97157000	0	1
5	cartridge, assy	96339000	0	1
6	aerator M24x1 (4,5 l/min)	92812000	0	1
7	fixing set (Ø 32)	13961000	0	1
8	connection hose 35½" M8x0,75 3/8"	96316001	0	1
a	pop up waste	94159000	0	1
b	O-ring 21,95x1,78	95169000	0	1
c	service tool for disassembling the handle	92124000	0	1