

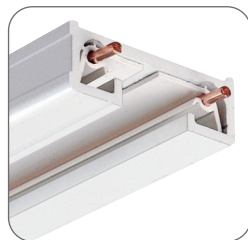


Juno® Trac-Lites™ System

A complete and customizable track system with an array of features

Juno®

Juno[®] Trac-Lites[™] System



Track sections are constructed of extruded aluminum and offer a low 1/2" profile that unobtrusively hugs the ceiling. Attractive yet affordable, they incorporate all the popular Juno Trac features, including debossed polarity indicators for fast, sure alignment. Standard track sections are available in 2', 4', 6' and 8' lengths with 12-gauge copper conductors. They can be easily cut to custom lengths in the field. A comprehensive selection of electrical feeds and connectors completes this highly versatile system.

Juno® Trac-Lites™ System

Track Sections

2' Track - R 2FT

19-7/8" actual length

BL Black **SL** Silver **BZ** Bronze
WH White **NAT** Natural

4' Track - R 4FT

43-7/8" actual length

BL Black **SL** Silver **BZ** Bronze
WH White **NAT** Natural

6' Track - R 6FT

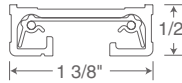
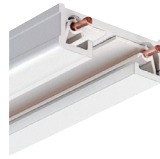
67-7/8" actual length

BL Black **SL** Silver **BZ** Bronze
WH White **NAT** Natural

8' Track - R 8FT

91-7/8" actual length

BL Black **SL** Silver **BZ** Bronze
WH White **NAT** Natural



- Low 1/2" profile fits snugly to ceiling
- Rigid extruded aluminum channel
- 12 gauge solid copper conductors
- 20 Amp capacity
- Debossed polarity line provides visual alignment with fixtures and connector polarity arrows
- One circuit only
- Includes dead end and mounting hardware
- Can be cut to custom length by installer

Electrical Feeds



End Feed Connector and Outlet Box Cover - R21

For outlet box feed. Includes outlet box cover, fixture strap and ground screw.

BL Black **SL** Silver **BZ** Bronze **WH** White



End Feed Connector - R38

Feeds track from above with Flex or BX. Accepts standard 1/2" electrical connector.

BL Black **SL** Silver **BZ** Bronze **WH** White



Conduit Feed - R34

For surface wiring using standard 1/2" electrical connector.

BL Black **SL** Silver **BZ** Bronze **WH** White



T-Bar End Feed - R36

Wiring compartment contains standard 1/2" K.O.'s. Feeds track from above when T-Bar is directly above track.

BL Black **SL** Silver **BZ** Bronze **WH** White



Cord and Plug End Feeds - R22

End Feed Connector with 15' 2-wire white cord. Includes surface wire retainers and in-line switch. 7 Amp maximum. Not UL Rated.

BL Black **SL** Silver **BZ** Bronze **WH** White

Cord and Plug End Feeds - R122

Same as above, but with 3-wire grounded complementary color cords and no switch.

BL Black **SL** Silver **BZ** Bronze **WH** White

*with black cord & plug



Floating Electrical Feed - R29

Permits mounting at any point along track at outlet box. Includes floating connector, outlet box cover, and track dead end.

BL Black **SL** Silver **BZ** Bronze **WH** White

Connectors



Miniature Straight Connector - R23

Joins two track sections end to end.

BL Black **SL** Silver **BZ** Bronze **WH** White



Flexible Adjustable Joiner - R20

Joins two track sections. Can flex to 90° to the left, right, up or down.

BL Black **SL** Silver **BZ** Bronze **WH** White



Adjustable Connector - R24

Joins two track sections to make 90° angle or straight run. T27 required for junction box feed. Straight and right angle covers supplied.

BL Black **SL** Silver **BZ** Bronze **WH** White



T Connector - R25

Joins three track sections. T27 required for junction box feed.

BL Black **SL** Silver **BZ** Bronze **WH** White



Outlet Box Cover - T27

Use with R24 and R25 for outlet box electrical feed. Includes nipple, locknut and ground screw.

BL Black **SL** Silver **BZ** Bronze **WH** White



Track Continuation Kit - R49

Two conduit adapters (one left R34 and one right R34) to continue track run around or thru obstructions. Use with standard 1/2" electrical connectors.

BL Black **SL** Silver **BZ** Bronze **WH** White



Dead End - R28

Only required when terminating extra field cut-off sections. One supplied with track section.

BL Black **SL** Silver **BZ** Bronze **WH** White

Current Limiting Feeds

Trac-Lites Current Limiting Feeds are the ideal solution for bringing trac applications into conformance with today's stringent commercial energy codes. Current Limiting Feeds – also known as Current Limiting Circuit Breakers – replace standard electrical feeds and are installed at every track feed location. They help avoid the watts-per-linear-foot penalties found in most energy codes, reducing calculated watts by as much as 75% or more. Current Limiting Circuit Breakers (ordered separately) are available in increments from 0.5A to 14A, permitting them to be closely matched to planned system wattage. Juno remote-mount Current Limiting Subpanels are also available for Trac-Lites systems – please visit our website for details.

Electrical Feeds



End Feed - RCLF11

Enable track to be fed in one direction.

BL Black **SL** Silver **BZ** Bronze **WH** White



In-Line Feed - RCLF21

Enable track to be fed in two directions. Accepts either one or two circuit breakers.

BL Black **SL** Silver **BZ** Bronze **WH** White

Current Limiting Circuit Breakers - TCLCB

Description	Wattage	Finish
0.5A Current Limiting Circuit Breaker	60W	BLCK, WHT
1A Current Limiting Circuit Breaker	120W	BLCK, WHT
2A Current Limiting Circuit Breaker	240W	BLCK, WHT
3A Current Limiting Circuit Breaker	360W	BLCK, WHT
4A Current Limiting Circuit Breaker	480W	BLCK, WHT
5A Current Limiting Circuit Breaker	600W	BLCK, WHT
6A Current Limiting Circuit Breaker	720W	BLCK, WHT
7A Current Limiting Circuit Breaker	840W	BLCK, WHT
8A Current Limiting Circuit Breaker	960W	BLCK, WHT
9A Current Limiting Circuit Breaker	1080W	BLCK, WHT
10A Current Limiting Circuit Breaker	1200W	BLCK, WHT
12A Current Limiting Circuit Breaker	1440W	BLCK, WHT
14A Current Limiting Circuit Breaker	1680W	BLCK, WHT

Mounting Accessories

A full range of accessories are available to tailor the Trac-Lites system to your exact requirements. Ceiling Pendant Stem Kits permit track to be mounted at ideal heights without having to lower the entire ceiling plane. Please note that stems can be specified in a variety of lengths and can be coupled for higher-ceiling applications.



MonoPoint Line Voltage - R40N

Accepts Juno 120V Trac fixtures. Mounts directly to outlet box. 4-3/4" dia. x 5/8" high

BL Black **SL** Silver **BZ** Bronze **WH** White



MonoPoint Low Voltage - R58

Accepts Juno 12V Trac-Lites® low voltage trac fixtures and decorative pendants. Mounts directly to outlet box. 6-1/2" dia. x 1/2" high

BL Black **SL** Silver **BZ** Bronze **WH** White



T-Bar Ceiling Stem Kits* - T90

Use two for 2', 4' or 6' Trac, or three for 8' Trac. For electrical feed, order Wireway Cover T93.

12", 18", 24", 36" or 48"

BL Black **SL** Silver **BZ** Bronze **WH** White

Rigid Ceiling Pendant Kits* - T91

Use two for 2', 4' or 6' Trac, or three for 8' Trac. For electrical feed, order Wireway Cover T93.

12", 18", 24", 36" or 48"

BL Black **SL** Silver **BZ** Bronze **WH** White

* Pendant Stems should not be used to support Trac-Lites Series Trac when used in conjunction with Trac-Master TBX Series Bi-ax track fixtures.

Mounting Accessories Continued



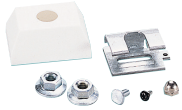
T-Bar Attachment Clips

To attach track to inverted tee grid ceiling. Use two for 2' or 4' Trac or three for 6' or 8' Trac.

R37F 15/16" T-Bar clip for use with flush tile ceilings.

R37D 15/16" T-Bar clip for use with drop tile ceilings.

R37916 9/16" T-Bar clip for use with flush or drop tile ceilings.



Solid Rod Pendant Mounting Kit - T56

Attaches solid 5/16" threaded rod to track. Includes plastic cap, mounting bracket, and hardware. Rod not supplied.

BL Black **SL** Silver **BZ** Bronze **WH** White



Pendant Stem Threaded Coupling - T96

Attaches solid 5/16" threaded rod to track. Includes plastic cap, mounting bracket, and hardware. Rod not supplied.

BL Black **SL** Silver **BZ** Bronze **WH** White



Pendant Slope Ceiling Adaptor - T94

Permits pendant track stem to be hung vertically from sloped ceiling. Use pendant kits (T90, T91). Will allow feeding of electrical wires to track at up to a 60° angle.

BL Black **SL** Silver **BZ** Bronze **WH** White



Feed Wireway Cover - T93

Use one for each T90 or T91 when using stem for feeding track. Feed using R38 or R24. Conceals electrical feed wires from stem to track.

BL Black **SL** Silver **BZ** Bronze **WH** White

Juno® Trac-Lites™ Kits

Easy-to-install Trac-Lites Kits are available with many popular fixture styles. Everything needed for a professional installation is included in a single box. These kits enable you to produce dramatic lighting effects throughout the home, including kitchens, dens, family rooms and much more.



Line Voltage Step Cylinder Track Kits

4' Kit with Three Fixtures

45-65W BR30/35-75W PAR30L Lamps
One 4' section of track, floating feed and three white step cylinder fixtures with white baffles.

R4K3512 WHB WH

4' Kit with Three Fixtures

35-50W PAR20 Lamps
One 4' section of track, floating feed, mounting hardware and three white flared step cylinder fixtures.

R4K3551 WH

Light Bars

Light bars include three Step Cylinder trac heads on a 23" fixed-position bar, offering fast, easy installation.

Three Head Step Cylinder



4' Kit with Three Fixtures

30-50W R20/35-50W PAR20 Lamps White baffle.
23" fixed position bar.

R3F511 WHB WH



Juno[®] Trac-Lites[™]

Juno Trac-Lites bring you all the style, quality and lighting performance Juno is famous for at affordable prices that can be tailored to any budget.

Juno Trac-Lites offer a total system, featuring a wide assortment of low voltage and line voltage track fixtures, decorative pendants, system components and track kits. Track fixtures are available in all the popular classics and in exciting contemporary designs, from metal and glass cones to barn doors, rockets, and cubes.

For added versatility, all Trac-Lites fixtures are compatible with Juno Trac-Master[™] Trac systems and all Juno Trac-Master fixtures may be used on Trac-Lites Trac systems.



Juno[®] Trac-Lites[™] System



©2019 Acuity Brands Lighting, Inc. The marks appearing in this catalog are trademarks of Acuity Brands Lighting, Inc. Products shown in this brochure may be covered by U.S. and international patents and patents pending. Specifications subject to change without notice. Printed in the U.S.A.