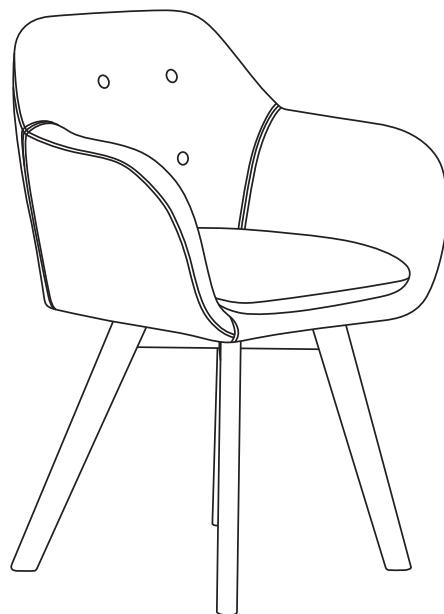
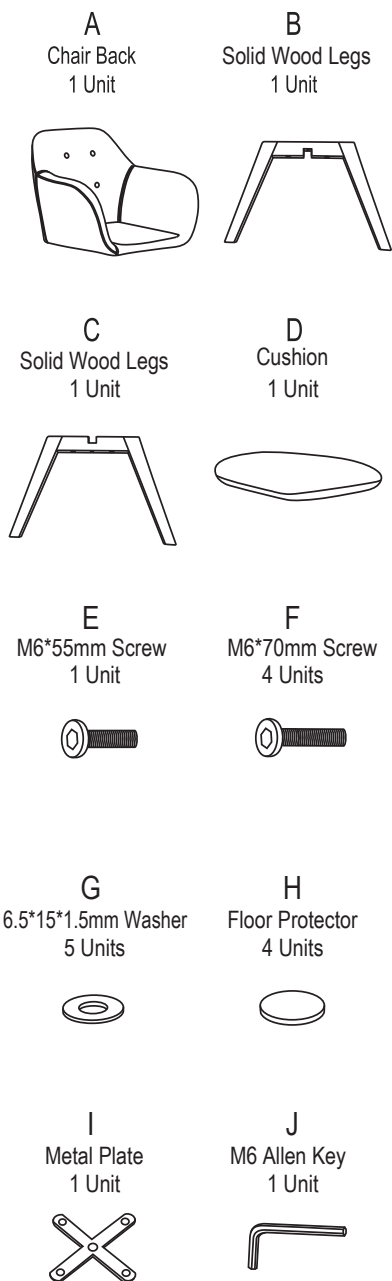


Model 161-FACA Fabric Arm Chair 2PK

Parts Listing



Assembly Instructions



Tools Needed: Allen Wrench - Provided

Please read all instructions before assembly.

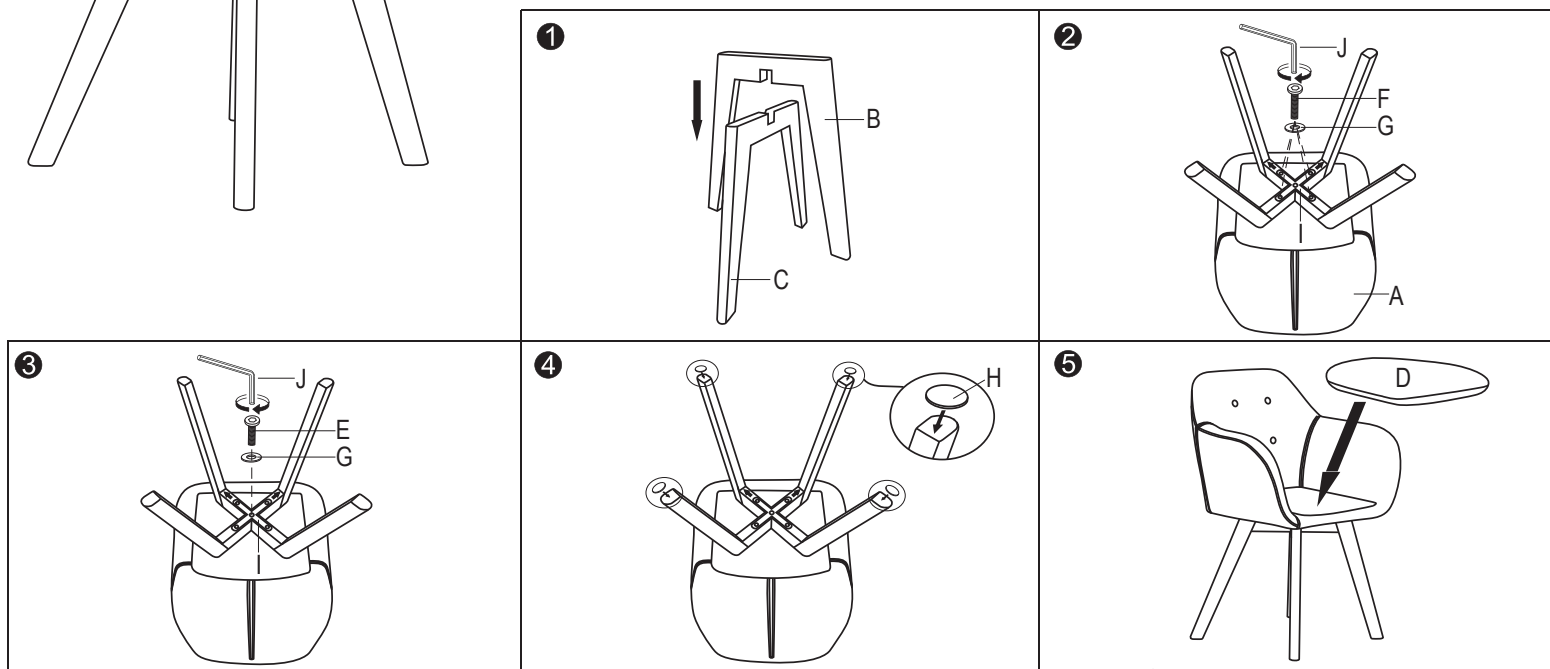
Step 1: Insert one Solid Wood Legs (B) into another Solid Wood Legs (C) as shown.

Step 2: Attach Solid Wood Legs (B,C) with the metal plate (I) to Chair Back(A), using four M6*70mm Screws (F) and four 6.5*15*1.5mm Washers (G) as shown. Tighten with M6 Allen Wench (J).

Step 3: Attach Solid Wood Legs (B,C) to Chair Back(A), using one M6*55mm Screws (E) and one 6.5*15*1.5mm Washer (G) as shown. Tighten with M6 Allen Wrench (J).

Step 4: Tear off the backing of the Floor Protector(H) firstly and paste the four Floor Protector (H) on the Solid Wood Legs(B,C) as shown.

Step 5: Tear off the dustcloth on the Cushion(D), and then stick the Cushion(D) on the seat.



WEIGHT CAPACITY: 275 lbs.

Assembly Notes:

During assembly, hand tighten screw only when all screws are in place, you may then tighten all screws completely.

CAUTION:

1. Do not use this chair as a step ladder.
2. Check for loose screws and tighten them every 6 months.

ofm

161 Tradition Trail Holly Springs, NC, 27540
800-520-7471 (voice) 919-362-4765 (fax)
919- 303-6389 (voice) www.ofminc.com
support@ofminc.com