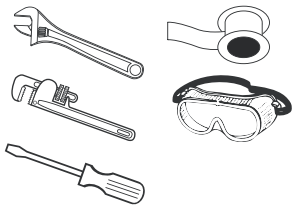


Installation Instructions

Double Handle Laundry Faucet

Tools

- Adjustable Wrench
- Pipe Wrench
- Screwdriver
- Thread Seal Tape
- Protective Goggles



Maintenance

Our faucets are crafted with the skill and quality to last a lifetime. By following the instructions in this booklet you will enjoy this quality item for years to come. To clean, wipe gently with a soft damp cloth, then wipe dry. Our finishes are very durable. However, to assure a long lasting luster, harsh abrasives or polishes should be avoided.

Safety Tips

Turn off the water before loosening any connections or disassembling the faucet. When working underneath a sink, protect your eyes from any dust or dirt by wearing safety glasses.

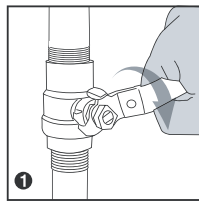
Important Points

Most faucet problems can be fixed by tightening a nut or connection or replacing a washer. Check supply line connections for any leaks and tighten if necessary. Don't overtighten any supply line connections.

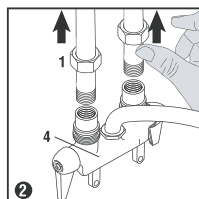


Preparation/Assembly (Steps 1-5)

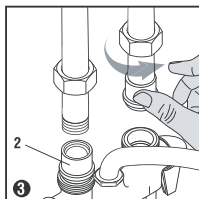
1. Shut off the water supply by turning the handle clockwise and remove the existing faucet.



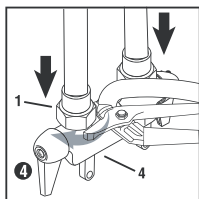
2. Remove the union nuts (1) from the faucet body (4) and slide them up the hot and cold water supply pipes. Apply thread seal tape to all threaded applications in a clockwise motion.



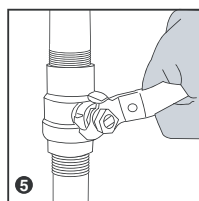
3. Thread the supply connection fittings (2) onto the hot and cold water supply pipes and tighten with a wrench.



4. Slide the union nuts (1) down the supply pipes and attach them to the faucet body (4) and tighten with a wrench in a clockwise motion.

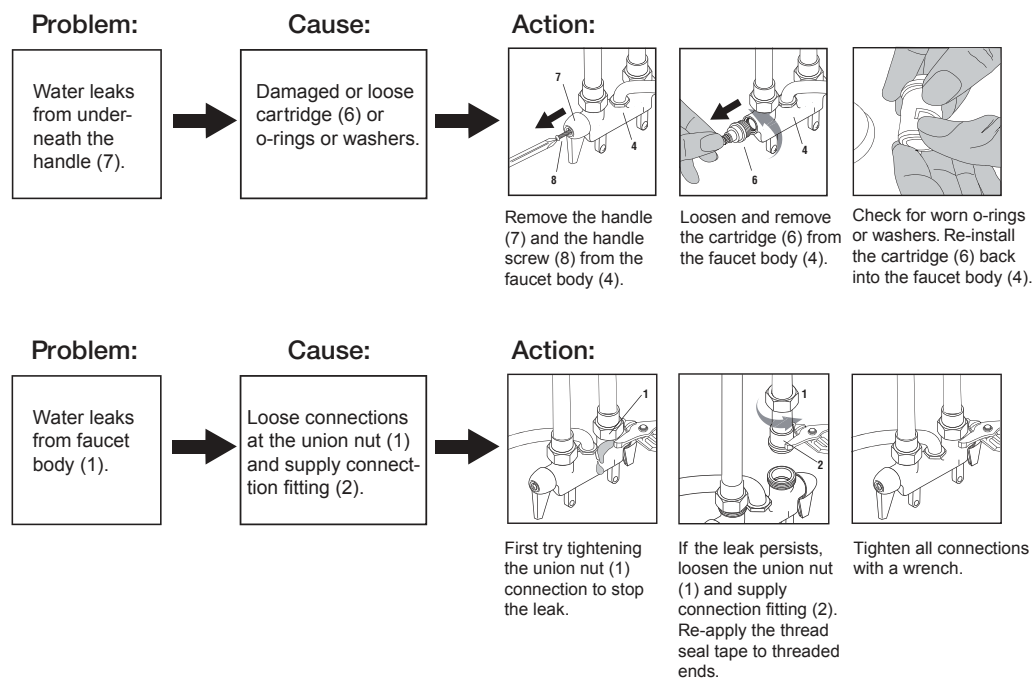


9. Tighten all connections and turn on the water supply by turning the handle counter-clockwise. Remove the aerator from the faucet spout. Run water for at least one minute to flush any sediment in the spout and body. Check for leaks. After flushing system re-attach the aerator.



Troubleshooting

If a faucet installation doesn't deliver water properly or leaks, finding the cause and fixing it can be easy.



JONES STEPHENS

We Got It

Manufactured for:
Jones Stephens Corp.
3249 Moody Parkway, Moody, AL 35004