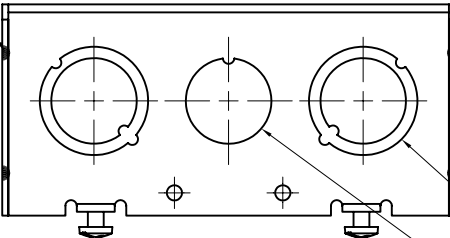
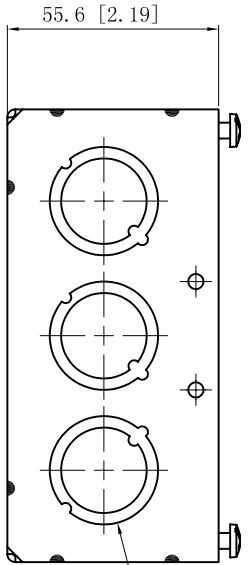


SIDES	BOTTOM
2 1/2" KNOCKOUTS	2 1/2" KNOCKOUTS
10 1/2"-3/4" KNOCKOUTS	2 3/4" KNOCKOUTS
	1 Ground Hump
2 PCS 8-32×1/2 Screws Installed	
Material:Steel-0.0625"-G60 Galvanized	

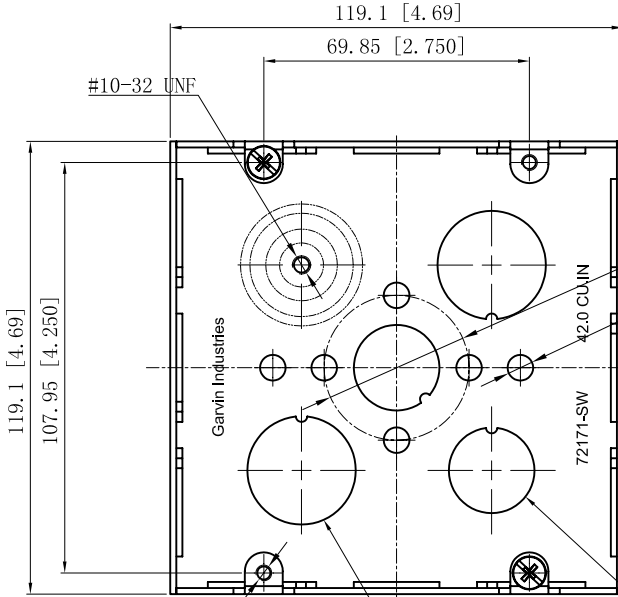
12 PLACES SPOT WELDING



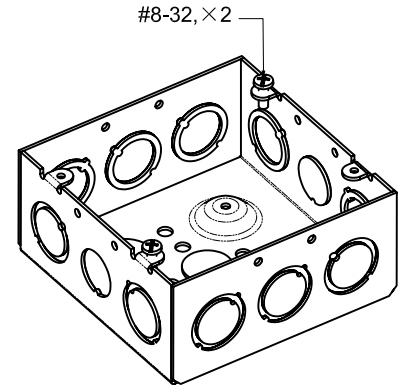
4 1/2"-3/4" MOON KNOCKOUTS $\phi=22.5$ [$\phi=0.886$]
 $\phi=28.5$ [$\phi=1.122$]
 2 1/2" KNOCKOUTS $\phi=22.5$ [$\phi=0.886$]



6 1/2"-3/4" MOON KNOCKOUTS $\phi=22.5$ [$\phi=0.886$]
 $\phi=28.5$ [$\phi=1.122$]



4-#8-32 UNC HOLE
 2 3/4" KNOCKOUTS $\phi=28.5$ [$\phi=1.122$]
 2 1/2" KNOCKOUTS $\phi=22.5$ [$\phi=0.886$]



DESCRIPTION
TRADE REFERENCE TERMS

This data sheet is for reference only. GARVIN INDUSTRIES reserves the right to make changes to the design without prior notice.

STANDARD PACKING	GARVIN INDUSTRIES		
	TITLE 4-11/16" SQUARE EXTENSION RINGS 2-1/8" DEEP		
25 PCS	SIZE	DWG NO.	REV
	A4	72171-SW	
DATA SHEET			