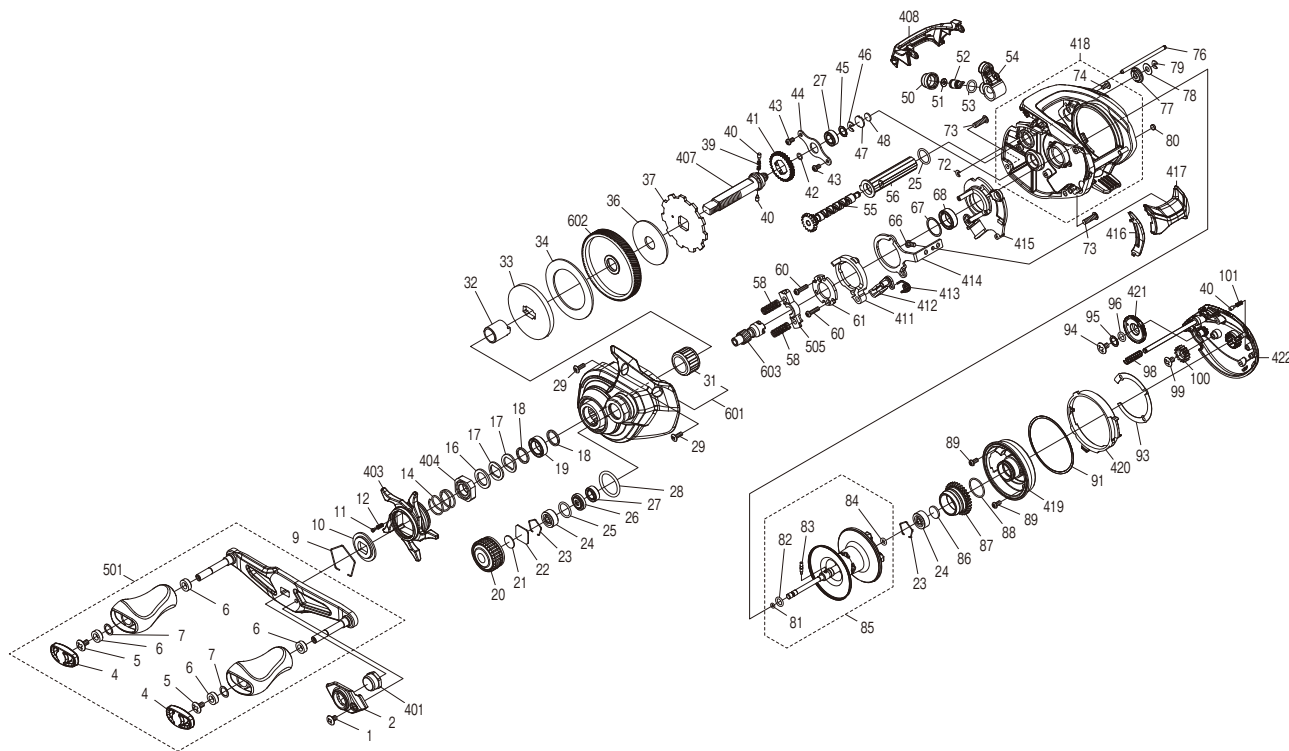


SHIMANO

CURADO

CU201M



(51RL622A21X)

| # | Part No. | Description | # | Part No. | Description | # | Part No. | Description |
|----|----------|--------------------------|----|----------|---------------------------------|-----|----------|------------------------|
| 1 | 10DV5 | Screw | 42 | 108WU | O Ring | 87 | 101DR | Brake Ring Gear |
| 2 | 144EC | Handle Nut Plate | 43 | 10S3Y | Screw | 88 | 100GW | O Ring |
| 4 | 10SS2 | Handle Knob Seal | 44 | 109T1 | Drive Shaft Retainer | 89 | 10L1Q | Screw |
| 5 | 10LFA | Screw | 45 | 10G6D | Washer | 91 | 140UF | Washer |
| 6 | 10PXZ | Bushing | 46 | 105NK | E Lock | 93 | 144EL | Washer |
| 7 | 104FH | Washer | 47 | 143CG | Metal Spacer | 94 | 103LE | Screw |
| 9 | 10KXW | Click Plate Retainer | 48 | 14079 | Rubber Spacer | 95 | 10G6D | Washer |
| 10 | 10J26 | Star Drag Click Plate | 50 | 10FJB | Pawl Cap | 96 | 108WS | O Ring |
| 11 | 10MFC | Click Pin | 51 | 10CFU | Washer | 98 | 10KNH | Spring |
| 12 | 10BT2 | Click Spring | 52 | 10BHQ | Line Guide Pawl | 99 | 103L7 | Screw |
| 14 | 10A70 | Star Drag Spring | 53 | 108WQ | O Ring | 100 | 10CLF | Idle Gear |
| 16 | 10J1P | Star Drag Spacer | 54 | 10R51 | Line Guide Pawl Holder Assembly | 101 | 10GQZ | Click Spring |
| 17 | 109F5 | Washer | 55 | 144EG | Worm Shaft | 401 | 1007V | Handle Nut |
| 18 | 100SE | Washer | 56 | 13YNV | Level Wind Guard | 403 | 144ND | Star Drag |
| 19 | 105BK | Ball Bearing | 58 | 100U9 | Yoke Spring | 404 | 10A3U | Star Drag Nut |
| 20 | 13YNS | Cast Control Cap | 60 | 10LV0 | Screw | 407 | 144NE | Drive Shaft |
| 21 | 10896 | Cast Control Spacer (B) | 61 | 100US | Clutch Cam Retainer | 408 | 144NF | Level Wind Protector |
| 22 | 1085F | Cast Control Spacer (A) | 66 | 10559 | Screw | 411 | 100W0 | Clutch Cam |
| 23 | 1054D | Bearing Retainer | 67 | 10190 | Washer | 412 | 1003W | Clutch Pawl Assembly |
| 24 | 105C3 | Ball Bearing | 68 | 10EX8 | Ball Bearing | 413 | 104CQ | Clutch Pawl Spring |
| 25 | 101GT | O Ring | 72 | 105NB | E Lock | 414 | 144NK | Clutch Plate |
| 26 | 100BL | Bearing Spacer | 73 | 100UV | Screw | 415 | 144N6 | Clutch Guard Assembly |
| 27 | 105BP | Ball Bearing | 74 | 10E8N | Screw | 416 | 144NG | Clutch Bar Guide B |
| 28 | 108WK | O Ring | 76 | 10E2G | Stabilizer Bar | 417 | 144NH | Clutch Button |
| 29 | 10LCY | Screw | 77 | 100G7 | Level Wind Guard Bushing | 418 | 144N7 | Frame Assembly |
| 31 | 1005E | Roller Clutch Bearing | 78 | 10FJZ | Washer | 419 | 144N8 | Brake Case |
| 32 | 100BM | Roller Clutch Inner Tube | 79 | 105NC | E Lock | 420 | 144NJ | B Side Plate Cam Lever |
| 33 | 100BK | Key Washer | 80 | 108PY | Washer | 421 | 10263 | Brake Dial |
| 34 | 10SSF | Drag Washer | 81 | 100BH | O Ring | 422 | 144N9 | B Side Plate Assembly |
| 36 | 10CHY | Drag Washer | 82 | 10TM7 | O Ring | 501 | 144NC | Handle Assembly |
| 37 | 13YNT | Anti-Reverse Ratchet | 83 | 10MD0 | Spool Clutch Pin | 505 | 1001Q | Yoke |
| 39 | 10JDY | Idle Gear Spring | 84 | 10EZ7 | O Ring | 601 | 144NB | A Side Plate Assembly |
| 40 | 10HJG | Idle Gear Pin | 85 | 144EB | Spool Assembly | 602 | 101AP | Drive Gear |
| 41 | 101K8 | Idle Gear A | 86 | 10EX5 | Bearing Spacer | 603 | 10DH6 | Pinion Gear |

Please note that the number of adjusting washers may not be the same as shown in the exploded views.
(Adjustment will vary with each individual product.)

(230403)_001