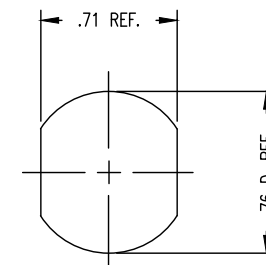
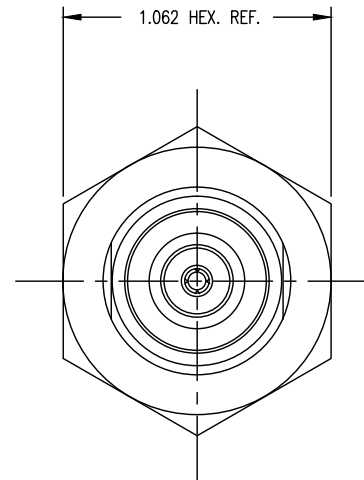
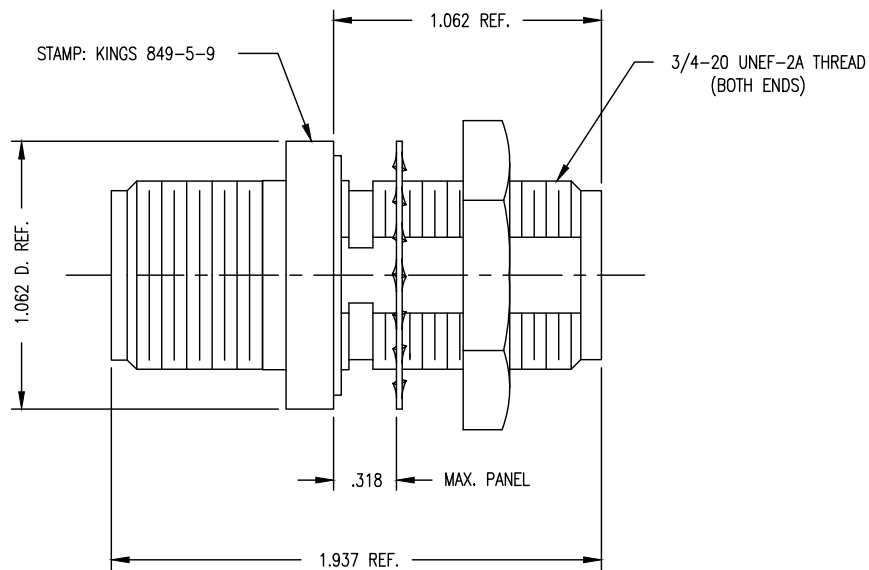


849-5-9



MOUNTING HOLE

NOTES:

1. CONNECTOR MEETS LEAKAGE RATE OF 1×10^{-7} CC/SEC.
2. MATERIAL:
 - INSULATORS-TEFLON, ASTM D1710
 - GASKETS-SILICONE RUBBER, A-A-59588
 - LOCKWASHER-PHOSPHOR BRONZE, ASTM B103
 - CENTER CONTACT-BERYLLIUM COPPER, ASTM B196
 - ALL OTHER METAL PARTS-BRASS, ASTM B16
3. FINISHES:
 - CENTER CONTACT-.000050 MIN GOLD PLATE PER ASTM B488 OVER .000050 MIN NICKEL PER AMS-QQ-290-N (RoHS)
 - ALL OTHER METAL PARTS-.000050 MIN NICKEL PLATE PER AMS-QQ-290-N OVER .000050 MIN COPPER PER ASTM B731(RoHS)
4. ELECTRICAL CHARACTERISTICS:
 - WORKING VOLTAGE-1500 VOLTS RMS
 - NOMINAL IMPEDANCE-50 OHMS
 - FREQUENCY RANGE-DC TO 4 GHZ
5. WEIGHT: 86.7 GRAMS

REVISIONS

ISSUE	CHANGES
0	ER 36946 KH 04/30/96
B	REVISED PER DMF304 & ERO40644 KPL 02/22/12

CUSTOMER SALES DRAWING

THIS DRAWING, THE DESIGNS AND IDEAS EMBODIED IN THE DEVICE TO WHICH IT RELATES, AND THE METHOD OF PRODUCING THE DEVICE, ARE THE PROPERTY OF WINCHESTER ELECTRONICS CORPORATION AND SHALL NOT BE EMPLOYED, COPIED, OR DISCLOSED TO ANYONE, IN ANY MANNER WITHOUT THE CONSENT OF WINCHESTER ELECTRONICS CORPORATION.

SCALE 2:1

APPROX SURFACE AREA

CAGE CODE: 91836

REF: BOEING

ADAPTER, F TO F,
HERMETIC, BULKHEAD, HN

DRAWN KH DATE 04/30/96

DESIGN AR DATE 05/01/96

APPR. DATE

KINGS Winchester Electronics Corporation
by WINCHESTER 62 Barnes Industrial Road North
Wallingford, Connecticut 06492

849-5-9