


Helpful Hints:

In most cases, your garden will begin to sprout in 3-4 days. For best results, keep your Terrarium in a warm sunny place. If your seeds are not sprouting, check to be sure the soil is damp, misting as needed.

NOTE: If your garden gets too wet or humid you may notice some new fuzzy growth appear. This is a type of fungus called mold. Remove the lid and let your garden dry a bit – air circulation helps. The mold is nature's way of breaking down the seeds and plant material to create new soil and it is not harmful to your health.

Over time, your garden will need to be replanted. You can use any leftover materials and plant it again, or buy new seeds and soil. These are available at any garden center.



Watch the seeds sprout in 3-4 days!



#6568000 Grow N' Glow Terrarium Dino
© Faber-Castell USA, Inc.
Cleveland, Ohio 44131
www.fabercastell.com
Designed & Assembled in USA
Wheat Grass and Chia Seeds from USA
All other components made in China
Conforms to ASTM D-4236
Non-Toxic Safe for Children

    
www.CreativityforKids.com

Need Help?

Call Toll Free: 800-311-8684
e-mail: consumer@fabercastell.com

Chat or view FAQs
& INFO online:
creativityforkids.com

Dino

GROW N' GLOW TERRARIUM

6+

Turn this plastic mason-style jar into your own little nighttime dinosaur habitat complete with real plants, rocks, glowing sand, stickers, figurines and a plant mister.

What is a Terrarium?

A Terrarium is a miniature garden created in an artificial environment. Small plants, rocks and garden themed accessories are often included. These gardens are planted as a fun hobby or for educational purposes.



Glow
in the
Dark!



Get ready to grow!

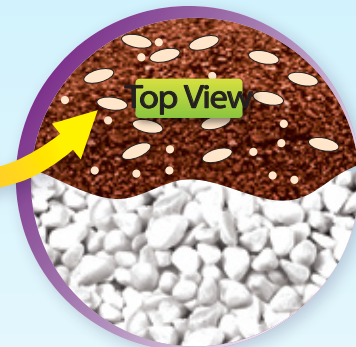
Lay out some newspapers or paper towels to work on. This will help keep your area clean while you plant.

HELPFUL HINT: Use just a few of the Chia and Wheat Grass seeds now, and then set the rest aside to replant in your Terrarium later. Please note - planting too many seeds at one time will cause overcrowding and lack of growth.

Layers

Open your potting mix and add a small amount of water. Squish the bag until it clumps together like clay, adding more water as needed. If your soil is too wet, press a paper towel onto the surface to remove any excess moisture.

- Layer the potting mix, sand and stones as shown. For best results, do not place the sand layer over the stones. It will settle and be difficult to see.
- Use the mister bottle and water to dampen each layer as you go. This will help keep them in place.
- For the top layer, place the stones in front, leaving an area of potting mix in the back for planting. See TOP VIEW image.
- Once the layers are complete, mist the top of the soil until it's very damp. Set the dinosaurs and eggs inside.



Put a lid on it

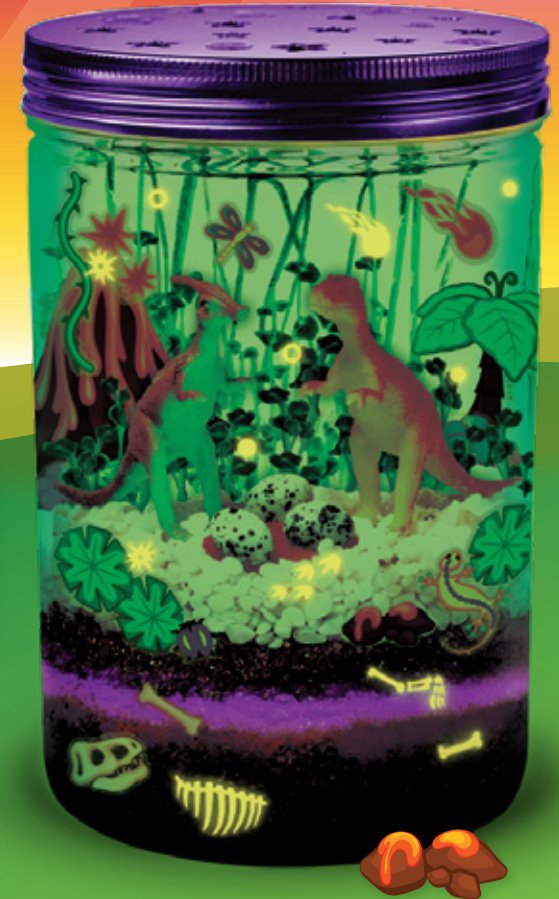
When you are done planting, add your starry sky lid.

Decorate with stickers

Your kit includes decorative and glow-in-the-dark stickers. Place them on the outside of the jar to add a little nighttime enchantment to your terrarium.



NOTE: As you place the stickers, be careful not to tip the jar or the layers will shift and mix together.



Shine a bright light on your Terrarium and watch what happens!