

REF31BMFXNV

REFRIGERATOR 31" FREESTANDING BOTTOM MOUNT
STAINLESS STEEL FINISH



Energy star.

Surround Cooling System - Optimized airflow design with multiple vents on every shelf level for even temperature throughout entire refrigerator.

Total No-Frost system: automated defrosting of evaporator ensures food stays always fresh.

Extra-large freezer drawer to store larger items and make best use of freezer space.

Fast freeze - 2 air vents in top freezer drawer accelerate temperature drop, helping lock vitamins and maintain flavors.

Gallon-sized door rack.

Electronic LED touch interface.

LED lighting.

Flat front stainless steel doors with no-fingerprint surface treatment.

Reversible doors for left or right swing configuration.

Choose Professional or Master Series handle kit to match your other Bertazzoni kitchen appliances.

2 year parts & labor warranty.

PRODUCT FEATURES

Volume	Ref 12.5 cu.ft / Frz 5.3 cu.ft
Door finish	Stainless steel
User interface	Internal digital LED touch interface
Lighting	LED on the top
Refrigerator shelves	1 stationary + 3 height adjustable
Refrigerator drawers	2
Freezer compartment	2 drawers + 2 sliding shelves
Door storage	1 full width, 4 height-adjustable half width
Settings	Super cool, Super freeze, Eco mode

TECHNICAL SPECIFICATIONS

Electrical supply	115 V 60 HZ - 250 W - 3.5 Amp
Power connection	NEMA 5-15P with 67" power cord
Sound rating	43 dbA
Energy consumption	458.0 kwh/yr
Certification	CEC,cUL,CULUS,UL
Warranty	2 years parts & labor Sealed system: 5 years labor
Packaging dimensions	W 33 1/8" H 71 1/2" D 29 5/16"
Weight	209.4 lbs

ACCESSORIES

PROHK24BM	Handle kit for 24" & 31" bottom mount refrigerator - Professional Series
MASHK24BM	Handle kit for 24" & 31" bottom mount refrigerator - Master Series



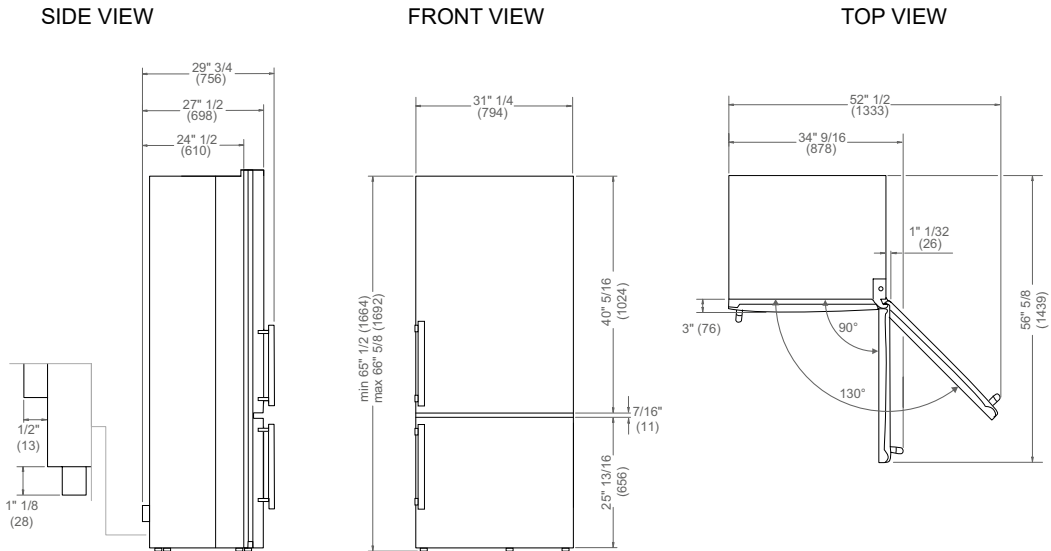
REF31BMFXNV

REFRIGERATOR 31" FREESTANDING BOTTOM MOUNT

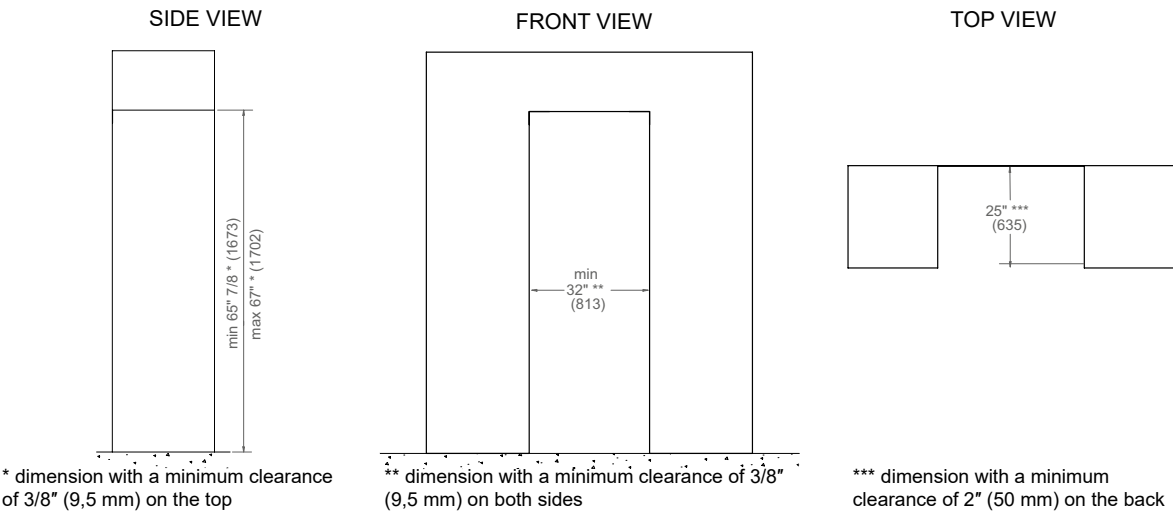
STAINLESS STEEL FINISH



PRODUCT DIMENSIONS



CUTOUT DIMENSIONS (Counter-depth Installation)

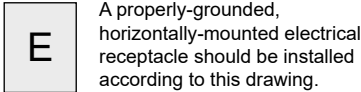


* dimension with a minimum clearance of 3/8" (9,5 mm) on the top

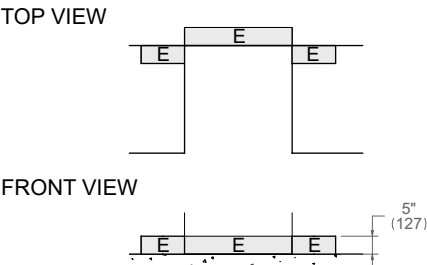
** dimension with a minimum clearance of 3/8" (9,5 mm) on both sides

*** dimension with a minimum clearance of 2" (50 mm) on the back

ELECTRICAL CONNECTION



Connection(s) placement within the opening may require additional cabinet depth.



Dimensions in parentheses are millimeters unless otherwise specified.