

PORTABLE STAIRCASE STEP STOOL

1. NON-SLIP STAIRCASE STEPS

Three steps to your truck bed, grab your equipment, three steps back down—all while facing forward. Ultra-wide, non-slip steps with almost no overlap make this step stool a genuine portable staircase.

2. TOOL TRAY AND HANDRAIL

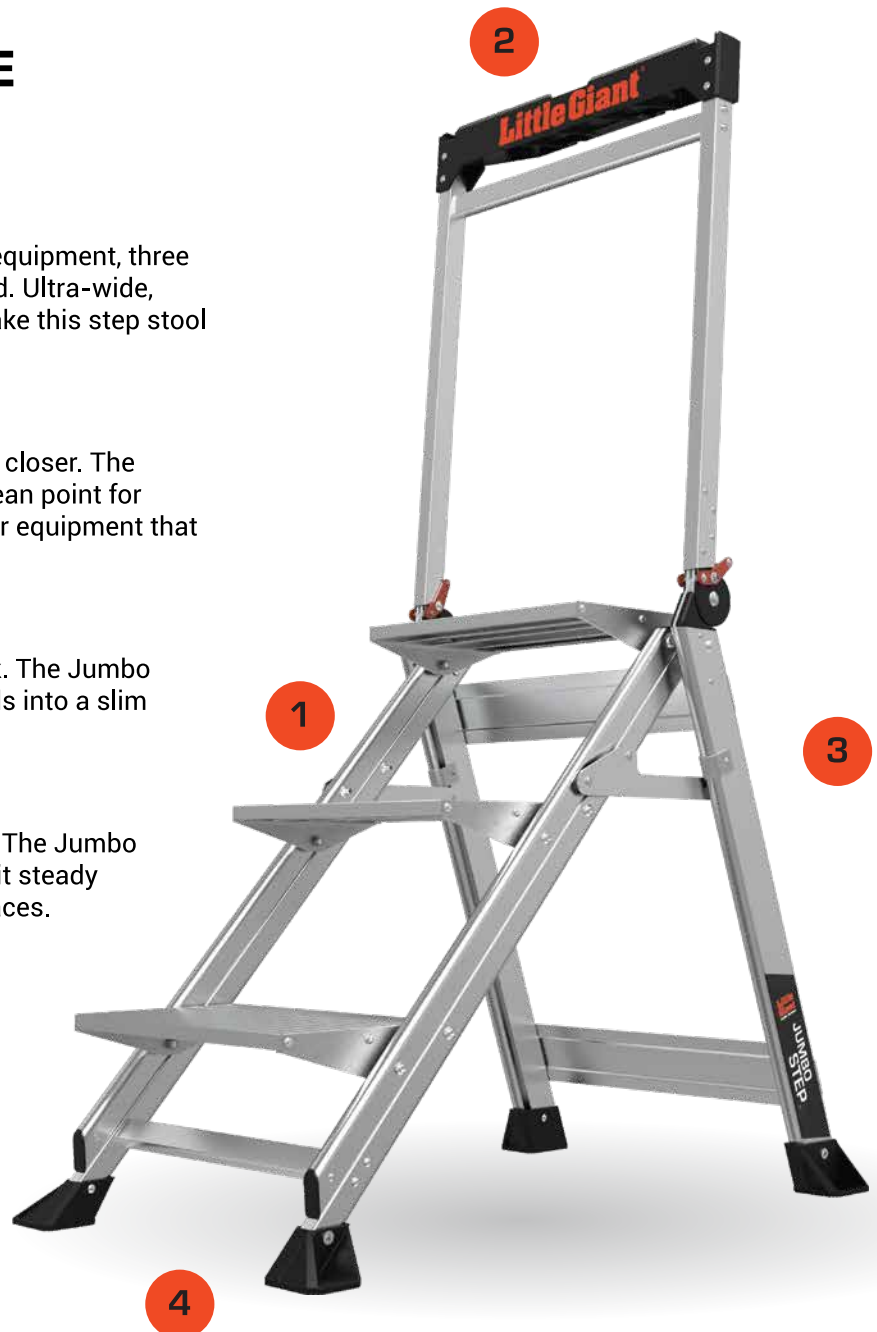
Keep your tools close and your safety rail closer. The rotating safety handrail is both a sturdy lean point for added stability and a versatile tool tray for equipment that needs to be on hand.

3. SLIM PROFILE

Stop lugging a ladder to do a stool's work. The Jumbo Step is lightweight, easy to carry, and folds into a slim storage profile.

4. OVERSIZED FEET

Need to set up over grating? No problem. The Jumbo Step's slip-resistant, oversized feet keep it steady and secure on a variety of industrial surfaces.





Stable Hand Rail



Large Tool Tray



Portable Staircase



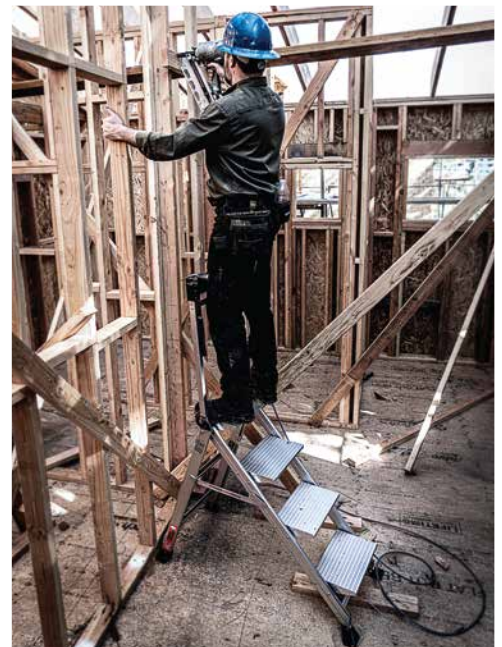
Quick-Release Rotating Hand Rail



Slim Profile



Wide Steps with Ridged Traction



Get Closer to Your Work

PRODUCT DESCRIPTION

A compact step stool for not-so-compact jobs. The Little Giant® Jumbo Step™ is the lightweight alternative to grabbing your six-footer when you only need two or three. Ultra-wide steps make walking up the Jumbo Step as easy as walking up a staircase. Available in a 2, 3 and 4 step model, this Step Stool meets or exceeds all OSHA and ANSI standards, and is rated Type IAA to hold 375 lbs.

LIMITED LIFETIME WARRANTY

Part #	Model	Max Reach*	Highest Standing Level	Step Width	Storage Width	Storage Depth	Weight
11902	2 Step w/ Bar	7' 6"	1' 6"	8.5"	1' 9"	4"	11.9 lbs
11903	3 Step w/ Bar	8' 8"	2' 2"	8.5"	1' 9"	4"	16.4 lbs
11904	4 Step w/ Bar	9' 5"	2' 11"	8.5"	1' 9"	4"	20 lbs

*A 5' 6" person with a 12" vertical reach