

**ELTE**

# THE BRUGES COLLECTION

The Bruges Collection is a nod to Belgian Brutalist furniture coming out of the late 1960s by makers like MI and De Coene. A repeating pyramidal motif is carved into the drawer fronts, lending a bold, graphic appearance to the collection. The angular aesthetic is expressed around the drawer fronts, which feature a floating beveled edge detail.



# THE BRUGES COLLECTION

## CASE

Hand selected veneers with composite wood core  
Performance urethane finish

## DRAWERS

Dovetailed solid wood drawer boxes  
Veneered composite wood drawer bottom  
Performance urethane finish

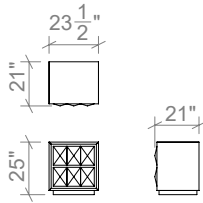
## HARDWARE

Non-marring nylon levelling glides  
Matte black mild steel fasteners  
Soft closing undermount ball bearing drawer slides

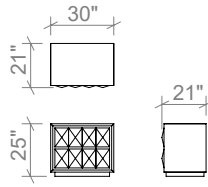
## FINISHES

Available in all ELTE Collection wood finishes

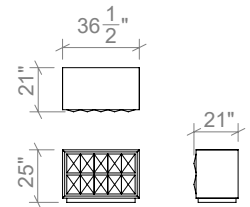
## BEDROOM STORAGE



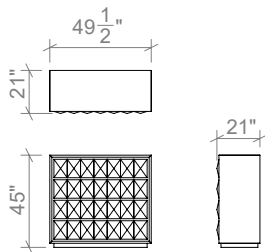
23.5 INCH NIGHTSTAND  
ELT23-012



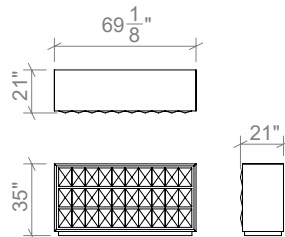
30 INCH NIGHTSTAND  
ELT23-050



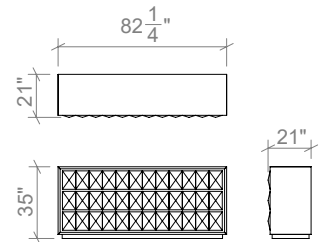
36.5" INCH NIGHTSTAND  
ELT23-068



4 DRAWER DRESSER  
ELT23-070



6 DRAWER DRESSER  
ELT23-069



9 DRAWER  
ELT23-071