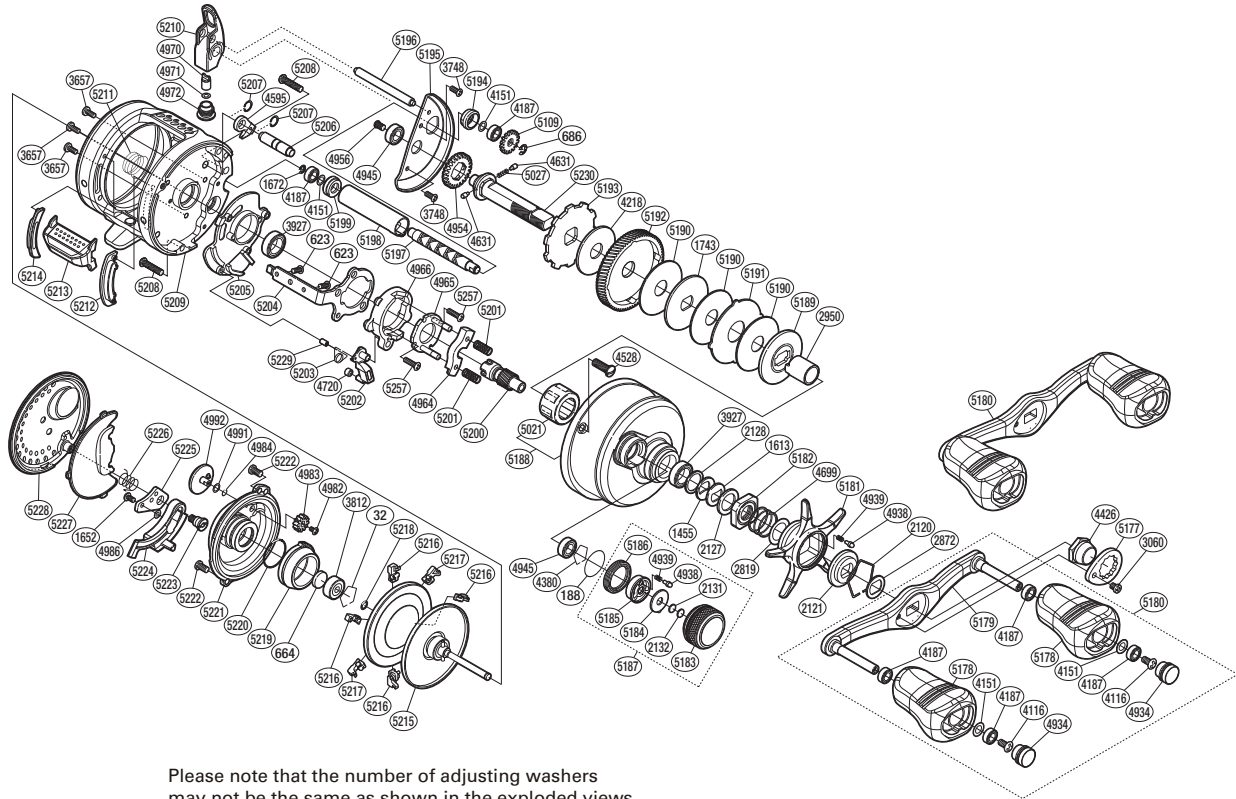


SHIMANO

CALCUTTA CONQUEST

S A-RB

CTCQ-300US



Please note that the number of adjusting washers may not be the same as shown in the exploded views.

(51RH820300U)

(Adjustment will vary with each individual product.)

Part No.	Description	Part No.	Description	Part No.	Description
BNT0032	Bearing Retainer	BNT4945	Ball Bearing	BNT5197	Worm Shaft
BNT0188	O Ring	BNT4954	Idle Gear	BNT5198	Level Wind Guard
BNT0623	Screw	BNT4956	Screw	BNT5199	Worm Bushing B
BNT0664	Spacer B	BNT4964	Yoke	BNT5200	Pinion Gear
BNT0686	E Lock	BNT4965	Clutch Cam Retainer	BNT5201	Yoke Spring
BNT1455	Drag Spring Washer (H)	BNT4966	Clutch Cam	BNT5202	Clutch Pawl
BNT1613	Drag Spring Washer (L)	BNT4970	Line Guide Pawl	BNT5203	Clutch Pawl Spring
BNT1652	Screw	BNT4971	Washer	BNT5204	Clutch Plate
BNT1672	E Lock	BNT4972	Pawl Cap	BNT5205	Clutch Guard
BNT1743	Key Washer	BNT4982	Screw	BNT5206	Anti-Reverse Pawl Pin
BNT2120	Click Plate Retainer	BNT4983	Br Dial Gear	BNT5207	C Lock
BNT2121	Star Drag Click Plate	BNT4984	O Ring	BNT5208	Screw
BNT2127	Star Drag Spacer	BNT4986	Washer	BNT5209	One-Piece Frame
BNT2128	Bearing Washer	BNT4991	Washer	BNT5210	Line Guide
BNT2131	Spool Tension Spacer (B)	BNT4992	Br Dial	BNT5211	Bearing Pressure Spring
BNT2132	Spool Tension Spacer (A)	BNT5021	Roller Clutch Bearing	BNT5212	Clutch Bar Guide (B)
BNT2819	Washer	BNT5027	Idle Gear Spring	BNT5213	Quick-Fire II Clutch Bar
BNT2872	Friction Washer	BNT5109	Idle Gear	BNT5214	Clutch Bar Guide (A)
BNT2950	Roller Clutch Inner Tube	BNT5177	Handle Nut Plate	BNT5215	Spool Assembly
BNT3060	Screw	BNT5178	Handle Knob	BNT5216	Brake Shoe M
BNT3657	Screw	BNT5179	Handle Shank Assembly	BNT5217	Brake Shoe L
BNT3748	Screw	BNT5180	Handle Assembly	BNT5218	O Ring
BNT3812	Ball Bearing	BNT5181	Star Drag	BNT5219	Brake Pipe Gear
BNT3927	Ball Bearing	BNT5182	Star Drag Nut	BNT5220	O Ring
BNT4116	Screw	BNT5183	Cast Control Cap	BNT5221	Brake Case
BNT4151	Washer	BNT5184	Cast Control Click Plate	BNT5222	Screw
BNT4187	Ball Bearing	BNT5185	Click Pin Holder	BNT5223	B Side Plate Insert
BNT4218	Drag Washer	BNT5186	Cast Control Click Holder	BNT5224	Side Plate Cam Lever
BNT4380	Retainer	BNT5187	Cast Control Cap Assembly	BNT5225	Damper Bush
BNT4426	Handle Nut	BNT5188	Right Side Plate	BNT5226	Damper Spring
BNT4528	Screw	BNT5189	Pressure Plate	BNT5227	B Side Plate Seal
BNT4595	Anti-Reverse Pawl	BNT5190	Drag Washer	BNT5228	Left Side Plate
BNT4631	Idle Gear Pin	BNT5191	Eared Washer	BNT5229	Clutch Pawl Spring Collar
BNT4699	Star Drag Spring	BNT5192	Drive Gear	BNT5230	Drive Shaft
BNT4720	Clutch Pawl Bushing	BNT5193	Anti-Reverse Ratchet	BNT5257	Screw
BNT4934	Handle Knob Seal	BNT5194	Worm Bushing A		
BNT4938	Click Pin	BNT5195	Drive Shaft Retainer		
BNT4939	Click Spring	BNT5196	Level Wind Guide		
				BNT4692	B-100 Oil (accessory)