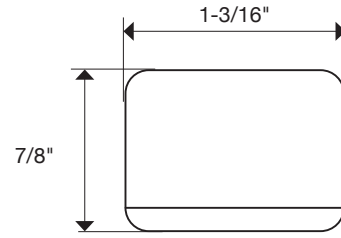
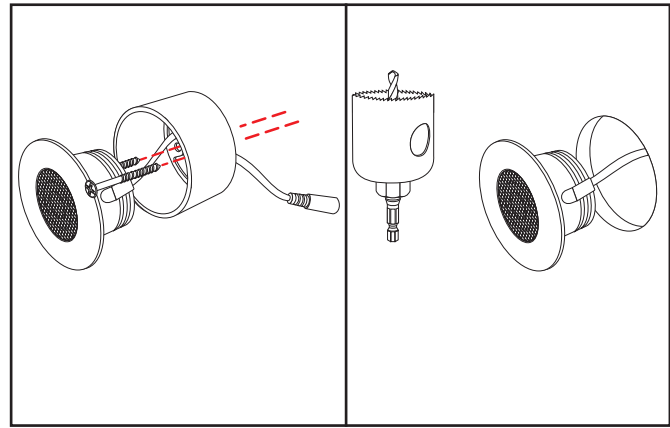




Brushed Aluminum fixture shown  
L-MR-CL-1BA-30



Fixture Cross-Section – Actual Size



Surface mount

Or recess mount

**LOWER LIGHT OUTPUT – 1.32 WATTS PER FIXTURE**

PART NUMBER	DESCRIPTION	DIMENSIONS	LUMENS PER FIXTURE Based on 4000K (approx. per fixture)	TOTAL WATTS PER FIXTURE	KELVIN TEMPERATURE
L-MR-CL-1BA- <i>Temp</i>	Mini LED puck light designed for surface or recess mount	1-3/16" x 1-3/16" x 7/8"	105	1.32	2700K (27) 3000K (30) 4000K (40) 5000K (50)

*Blue indicates customer choice. Temp indicates Kelvin Temperature.*

L-MR-CL-1BA-30 (Example part number for Mini Round Series puck light in 3000K)

**INSTALLATION COMPONENTS**

PART NUMBER	DESCRIPTION	OUTSIDE DIAMETER
T-CW20G-STR-25	25 ft. spool of 20/2 AWG stranded wire	9/64"
T-CW20G-STR-50	50 ft. spool of 20/2 AWG stranded wire	9/64"
T-CW20G-STR-100	100 ft. spool of 20/2 AWG stranded wire	9/64"
T-CW20G-STR-1	20/2 AWG stranded wire sold per foot	9/64"

**FINISH AVAILABLE**



Brushed Aluminum (BA)

## FEATURES

- 1 diode per fixture
- Fully assembled fixture with female plug for easy installation
- 90 CRI (Color Rendering Index – true color)
- Simple surface or recess mount installation
- 3-year limited warranty
- Designed for indoor application
- No UV or IR
- 3 foot lead with end female barrel connector
- 30,000 hour LED life at 70% lumen maintenance
- 12 volt DC plug-in or hardwired power supply required (order separately)

## APPLICATIONS

- Interior Cabinet
- Display/Accent
- Architectural Niche

## TECHNICAL INFORMATION

<b>Series</b>	Mini Round Series
<b>Input Voltage</b>	12 volt DC
<b>Color Temperature</b> (Kelvin)	Warm white 2700K (27) Soft white 3000K (30) Cool white 4000K (40) Daylight white 5000K (50)
<b>CRI</b> (Color Rendering Index)	90+
<b>LED Type</b>	1W Edixeon S High power
<b>Lumens</b>	105 lumens per fixture
<b>Max Run</b>	Refer to power supply specs
<b>Cuttable</b>	No
<b>IP Rating</b>	-----
<b>Dimmable</b>	Not recommended
<b>Rating</b>	cULus Listed
<b>Rated Life</b>	30,000 hrs
<b>LED Beam Angle</b>	60°
<b>LEDs Per Fixture</b>	1
<b>Mounting</b>	Surface or Recess Mount
<b>Recess Mount Hole</b>	1-3/16" hole saw
<b>Wiring</b>	20/2 stranded
<b>Operating Temperature</b>	-13°F to 104°F (-25°C to 45°C)
<b>Environment</b>	Dry location
<b>Construction Material</b>	Aluminum
<b>Warranty</b>	3 years

## COMPATIBLE POWER SUPPLIES

PART NUMBER	DESCRIPTION	DIMENSIONS
<b>T-12W-12V-PI</b>	12 watt AC/DC 2 prong plug-in, 12 volt DC 1 AMP.	2-15/16" x 1-3/16" x 1-13/16"
<b>T-24W-12V-PI</b>	24 watt AC/DC 2 prong plug-in, 12 volt DC 2 AMP.	3-11/16" x 1-7/8" x 1-5/16"
<b>T-36W-12V-PI</b>	36 watt AC/DC 2 prong plug-in, 12 volt DC 3 AMP	3-3/4" x 2" x 1-5/16"
<b>T-60W-12V-PI</b>	60 watt AC/DC 2 prong plug-in, 12 volt DC 5 AMP	5-1/8" x 2-1/16" x 1-1/4"
<b>T-96W-12V-PI</b>	96 watt AC/DC 3 prong plug-in, 12 volt DC 8 AMP.	5-1/2" x 2-3/8" x 1-3/8"
<b>T-120W-12V-PI</b>	120 watt AC/DC 3 prong plug-in, 12 volt DC 10 AMP	6-3/8" x 2-11/16" x 1-1/4"
<b>T-60W-12-WP-HW</b>	60 watt, 12 volt IP67 rated waterproof LED hardwired	6-1/2" x 1-5/8" x 1-1/4"
<b>T-150W-12-WP-HW</b>	150 watt, 12 volt IP67 rated waterproof LED hardwired.	7-3/8" x 2-3/8" x 1-1/2"
<b>T-DT24W-12V-HW</b>	24 watt 12 volt DC dimmable class 2 LED hardwired.	13-3/4" x 3" x 1-5/8"
<b>T-DT48W-12V-HW</b>	48 watt 12 volt DC dimmable class 2 LED hardwired	13-3/4" x 3" x 1-5/8"
<b>T-DT60W-12V-HW</b>	60 watt 12 volt DC dimmable class 2 LED hardwired	13-3/4" x 3" x 1-5/8"
<b>T-DT120W-12V-HW</b>	120 watt 12 volt DC dimmable LED hardwired	15" x 3-1/8" x 2-1/2"
<b>T-WAV-60W-PSR</b>	60 watt AC/DC 2 prong plug-in, 12 volt DC 5 AMP with built in smart LED receiver	7-1/4" x 2-7/8" x 1-5/8"
<b>T-320W-12V-HW</b>	320 watt 12 volt indoor industrial hardwired	8-1/2" x 4-1/2" x 2"

## COMPATIBLE SWITCHES

PART NUMBER	DESCRIPTION	DIMENSIONS
<b>T-DSS-30W-IR</b>	Infrared (IR) door sensor switch.	3/8" x 1" x 1-1/4"
<b>T-2HDSS-30W-IR</b>	Infrared (IR) door sensor switch <b>with two heads</b>	3/8" x 1" x 1-1/4"
<b>T-MSS-60W</b>	Motion sensor switch	1/2" x 2-1/4"
<b>T-PSS-60W-IR</b>	Infrared (IR) sensor proximity switch.	2-1/4" x 3/8"
<b>T-TDS-60W</b>	LED touch dimmer.	3/8" x 2" x 2"
<b>T-WSS-60W-IR</b>	Infrared (IR) wave sensor switch	2-1/4" x 3/8"
<b>DVLV-600P-Color</b>	600W Diva slide dimmer.	4.69" x 2.94" x 1.31"
<b>T-RS-BK</b>	On / off round switch	15/16"