

This document, including the design, configuration and mechanical features revealed herein are the sole, confidential and proprietary property of TRU Corporation. Reproduction or use thereof, in whole or part, is prohibited without the prior written consent of TRU Corporation.

REV.	DESCRIPTION	DATE	APPROVED
-	ORIGINAL ISSUE	03/09/12	TRC

ENGINEERING REQUIREMENTS:

ELECTRICAL
IMPEDANCE: 50 OHMS
FREQUENCY RANGE: DC TO 7.5 GHz
VOLTAGE RATING: 2,700 VOLTS RMS
PIM <-175 dBc

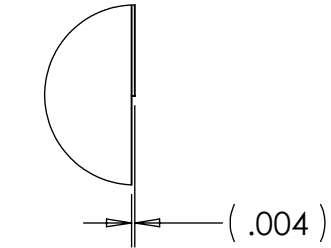
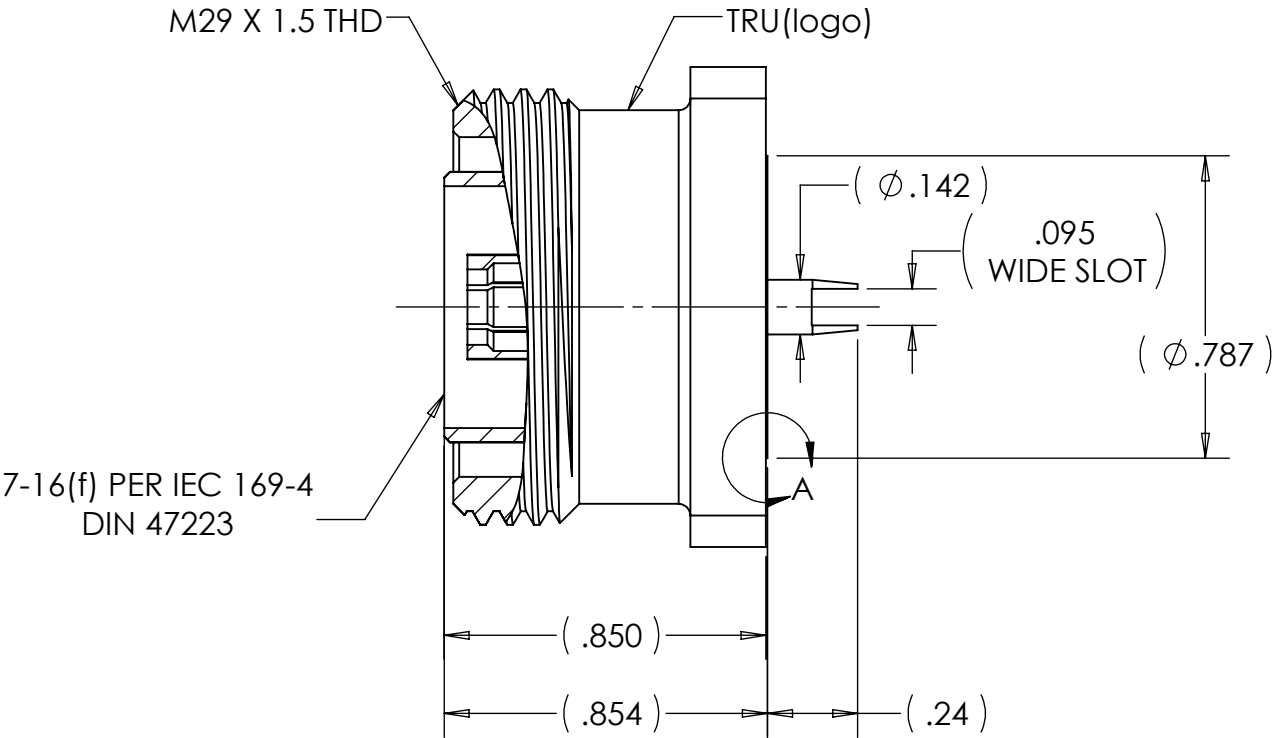
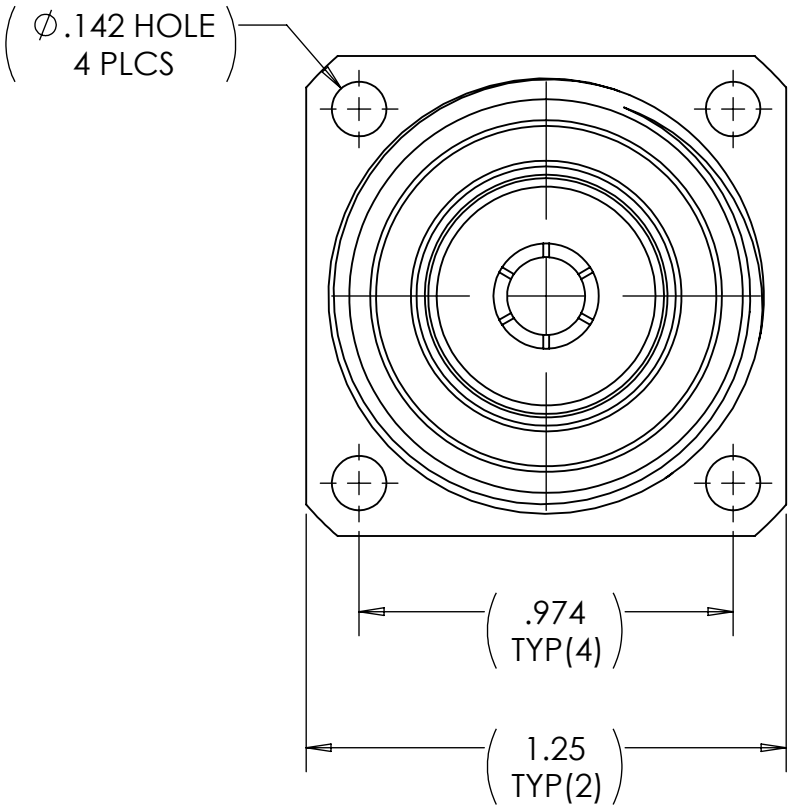
MECHANICAL
INTERFACE: PER IEC 169-4, DIN 47223
SOLID OUTER CONTACT

MATERIAL
INSULATOR: PTFE
FEMALE CONTACT: BERYLLIUM COPPER
OUTER CONTACT: BRASS
OTHER METAL PARTS: BRASS
CAP(NOT SHOWN): STANDARD VINYL (PVC)

FINISH
CONTACT: SILVER PLATING
BODY: TRIMETAL PLATING

ENVIRONMENTAL
OPERATING TEMPERATURE: -45°C to 120°C
RoHS COMPLIANT PER 2002/95/EC



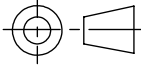
DESCRIPTION: 7-16 (f) RECEPTACLE, PANEL, FRONT MOUNTING



DETAIL A
SCALE 4 : 1

NOTES:

- UNLESS OTHERWISE SPECIFIED; ALL DIMENSIONS ARE REFERENCE ONLY.
- PRODUCT SUPPLIED WITH BLUE VINYL CAP (NOT SHOWN)

MATERIAL	DO NOT SCALE DRAWING		DRAWN TRC	DATE 02/24/12	 TRU Corporation 245 Lynnfield St, Peabody, MA 01960			
	UNLESS OTHERWISE SPECIFIED: DIMENSIONS ARE IN INCHES		ENG APPR. TM	DATE 03/07/12				EXPERIENCE. <i>TRU</i> INNOVATION.
	TOLERANCES: FRACTIONS: ± 1/64 .XX : ± .01 .XXX: ± .005 ANGLES: ± 1/2° MACHINED SURFACES: 		MFG APPR. NRM	DATE 03/09/12	TITLE: CONNECTOR, COAXIAL 7-16(f) PANEL RECEPTACLE			
	COMMENTS:		OTHER APPR.	DATE				
surface area: sq inch		weight: lbs	THIRD ANGLE PROJECTION 		SIZE B	DWG. NO. TRU-7002-0002-02		REV -
					CAGE CODE: 92180		SCALE: 2:1	SHEET 1 OF 1