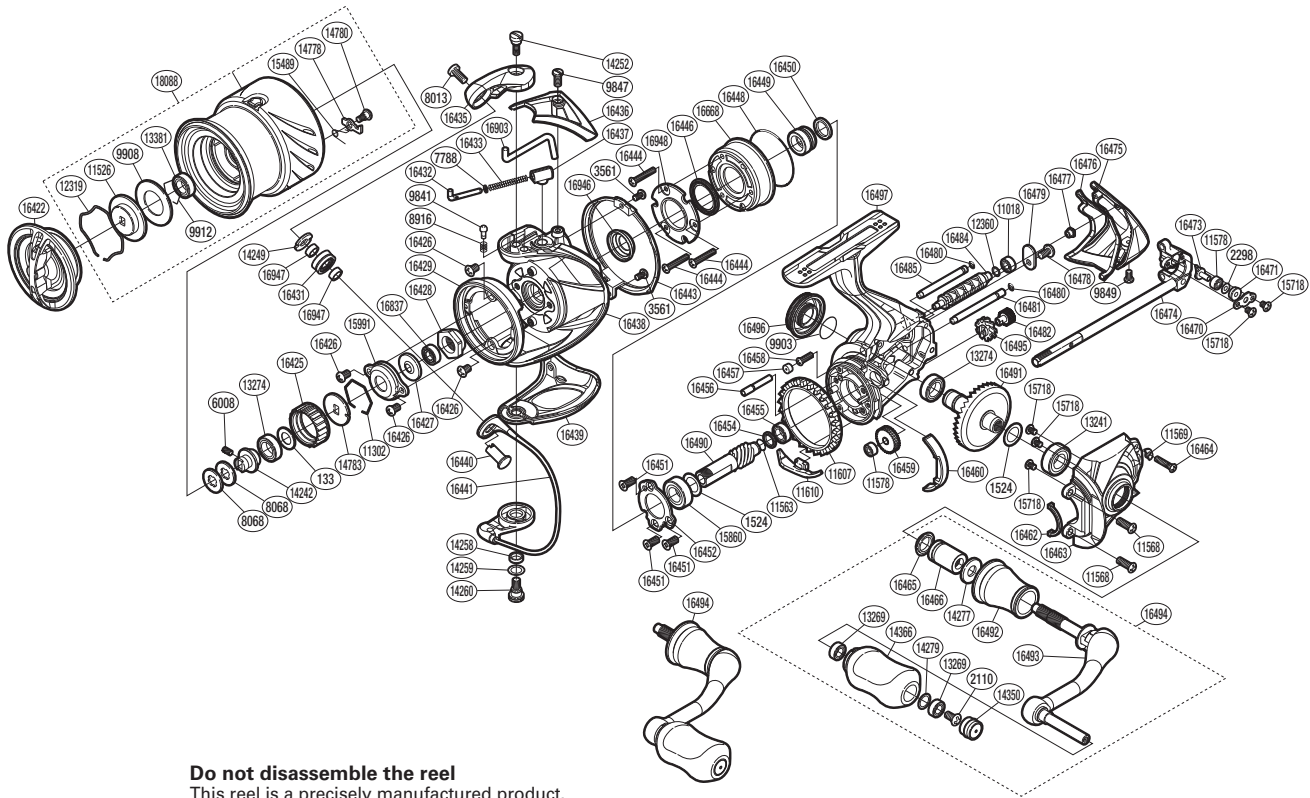


SHIMANO

STELLA S A-RB

STL-2500HGS



Do not disassemble the reel

This reel is a precisely manufactured product. Disassembling the reel may result in decreased performance. Problems caused by unauthorized disassembly are not covered by warranty.

Please note that the number of adjusting washers may not be the same as shown in the exploded views. (Adjustment will vary with each individual product.)

(51SE41E027X)

| Part No. | Description | Part No. | Description | Part No. | Description |
|----------|---------------------------|----------|----------------------------|----------|------------------------------|
| RD 0133 | Anti-Reverse Pawl Spacer | RD14350 | Handle Knob Seal | RD16460 | Friction Ring Spacer |
| RD 1524 | Washer | RD14366 | Handle Knob | RD16462 | Flange Water Proof |
| RD 2110 | Screw | RD14778 | Drag Click | RD16463 | Side Cover |
| RD 2298 | Spacer | RD14780 | Screw | RD16464 | Screw |
| RD 3561 | Screw | RD14783 | Spool Support | RD16465 | Handle Shaft Seal |
| RD 6008 | Set Screw | RD15489 | Drag Click Spring | RD16466 | Handle Shaft Cover B |
| RD 7788 | Spring Guide (A) Support | RD15718 | Screw | RD16470 | Oscillating Pawl Cover |
| RD 8013 | Screw | RD15860 | Ball Bearing | RD16471 | Oscillating Slider Bushing |
| RD 8068 | Spool Washer | RD15991 | Rotor Nut Lock Plate | RD16473 | Oscillating Pawl |
| RD 8916 | Click Spring | RD16422 | Drag Knob | RD16474 | Main Shaft Assembly |
| RD 9841 | Click Pin | RD16425 | Drag Click Ratchet | RD16475 | Rear Protector |
| RD 9847 | Screw | RD16426 | Screw | RD16476 | Rear Shield |
| RD 9849 | Screw | RD16427 | Bearing Water Proof | RD16477 | Rear Protector Collar |
| RD 9903 | O Ring | RD16428 | Rotor Nut | RD16478 | Screw |
| RD 9908 | Drag Washer | RD16429 | Rotor Brim | RD16479 | Worm Shaft Retainer |
| RD 9912 | Bearing Retainer | RD16431 | Line Roller | RD16480 | O Ring |
| RD11018 | Ball Bearing | RD16432 | Bail Spring Guide A | RD16481 | Oscillating Guide B |
| RD11302 | Ratchet Spring | RD16433 | Bail Spring | RD16482 | Idle Gear B S |
| RD11526 | Key Washer | RD16435 | Bail Arm | RD16484 | Worm Shaft |
| RD11563 | Worm Shaft Ring | RD16436 | Bail Spring Cover | RD16485 | Oscillating Guide A |
| RD11568 | Screw | RD16437 | Bail Spring Seat | RD16490 | Pinion Gear |
| RD11569 | Screw Washer | RD16438 | Rotor | RD16491 | Drive Gear |
| RD11578 | Ball Bearing | RD16439 | Bail Hold Support Guard | RD16492 | Handle Shaft Cover |
| RD11607 | Friction Ring | RD16440 | Line Roller Support | RD16493 | Handle Shank Assembly |
| RD11610 | Bail Trip Strike | RD16441 | Bail Assembly | RD16494 | Handle Assembly |
| RD12319 | Drag Washers Retainer | RD16443 | Rotor Guard | RD16495 | Idle Gear B L |
| RD12360 | Washer | RD16444 | Screw | RD16496 | Handle Screw Cap |
| RD13241 | Ball Bearing | RD16446 | Roller Clutch Water Proof | RD16497 | Body |
| RD13269 | Ball Bearing | RD16448 | O Ring | RD16668 | Roller Clutch Assembly |
| RD13274 | Ball Bearing | RD16449 | Roller Clutch Inner | RD16837 | Main Shaft Spacer |
| RD13381 | Ball Bearing | RD16450 | Roller Clutch Inner Spacer | RD16903 | Bail Trip Lever |
| RD14242 | Bearing Bushing | RD16451 | Screw | RD16946 | Rotor Ring |
| RD14249 | Line Roller Plate | RD16452 | Bearing Retainer | RD16947 | Bearing Spacer |
| RD14252 | Screw | RD16454 | Pinion Gear Spacer | RD16948 | Roller Clutch Reinforce |
| RD14258 | Bail Trip Cam Bushing | RD16455 | Ball Bearing | RD18088 | Spool Assembly |
| RD14259 | Washer | RD16456 | Idle Gear B Shaft | | |
| RD14260 | Screw | RD16457 | Body Flange Seal | | |
| RD14277 | Large Handle Shank Washer | RD16458 | Screw | | |
| RD14279 | Washer | RD16459 | Idle Gear | RD 9811 | Reel Seat Spacer (accessory) |