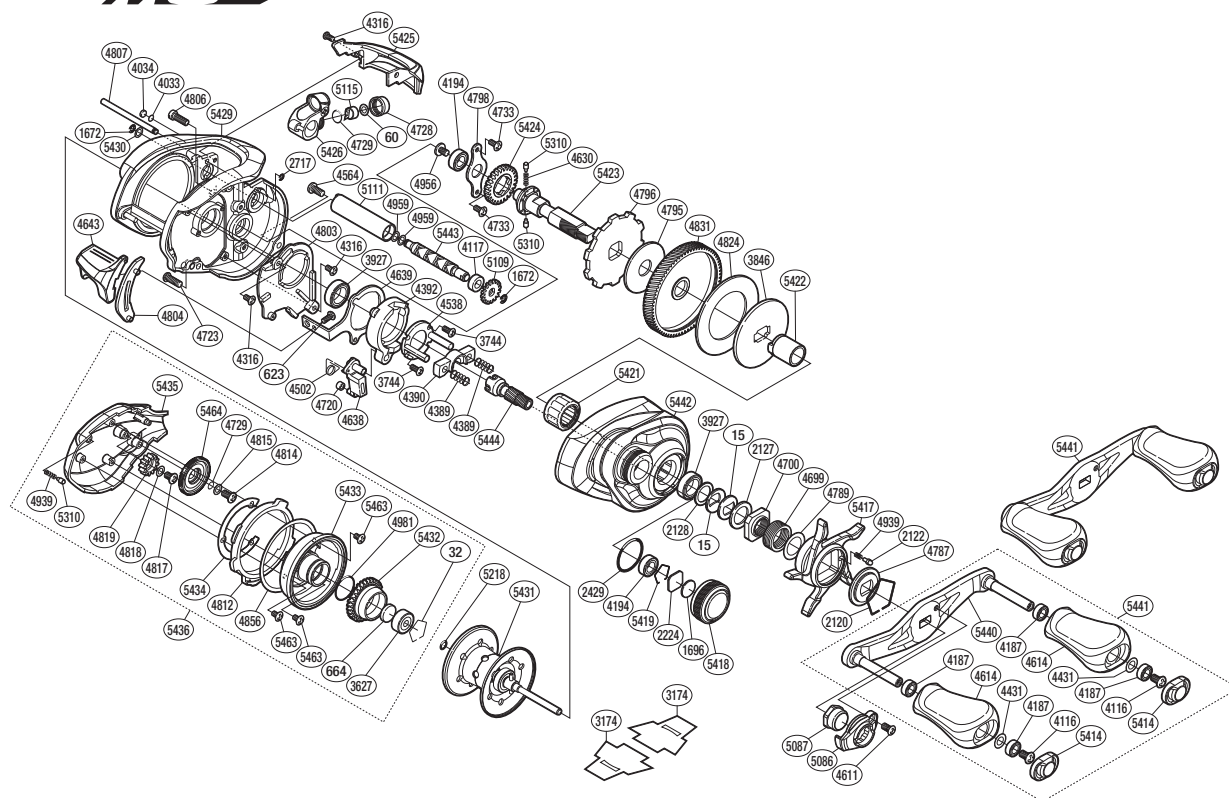


SHIMANO

Metanium
MGL

SA-RB

META MGL-XGR



Please note that the number of adjusting washers may not be the same as shown in the exploded views. (Adjustment will vary with each individual product.)

(51RH962150X)

| Part No. | Description | Part No. | Description | Part No. | Description |
|----------|----------------------|----------|--------------------------|----------|------------------------------|
| BNT0015 | Drag Spring Washer | BNT4630 | Idle Gear Spring | BNT5087 | Handle Nut |
| BNT0032 | Bearing Retainer | BNT4638 | Clutch Pawl | BNT5109 | Idle Gear |
| BNT0060 | Spacer | BNT4639 | Clutch Plate | BNT5111 | Level Wind Guard |
| BNT0623 | Screw | BNT4643 | Quick-Fire II Clutch Bar | BNT5115 | Line Guide Pawl |
| BNT0664 | Spacer B | BNT4699 | Star Drag Spring | BNT5218 | O Ring |
| BNT1672 | E Lock | BNT4700 | Star Drag Nut | BNT5310 | Idle Gear Pin |
| BNT1696 | Cast Control Spacer | BNT4720 | Clutch Pawl Bushing | BNT5414 | Handle Knob Seal |
| BNT2120 | Click Plate Retainer | BNT4723 | Screw | BNT5417 | Star Drag |
| BNT2122 | Click Pin | BNT4728 | Pawl Cap | BNT5418 | Cast Control Cap |
| BNT2127 | Star Drag Spacer | BNT4729 | O Ring | BNT5419 | Bearing Retainer |
| BNT2128 | Bearing Washer | BNT4733 | Screw | BNT5421 | Roller Clutch Bearing |
| BNT2224 | Spool Tension Spacer | BNT4787 | Star Drag Click Plate | BNT5422 | Roller Clutch Inner Tube |
| BNT2429 | O Ring | BNT4789 | Washer | BNT5423 | Drive Shaft |
| BNT2717 | E Lock | BNT4795 | Drag Washer | BNT5424 | Idle Gear |
| BNT3627 | Ball Bearing | BNT4796 | Anti-Reverse Ratchet | BNT5425 | Level Wind Protector |
| BNT3744 | Screw | BNT4798 | Drive Shaft Retainer | BNT5426 | Line Guide |
| BNT3846 | Key Washer | BNT4803 | Clutch Guard | BNT5429 | Frame |
| BNT3927 | Ball Bearing | BNT4804 | Clutch Bar Guide | BNT5430 | Washer |
| BNT4033 | Washer | BNT4806 | Screw | BNT5431 | Spool Assembly(With Bearing) |
| BNT4034 | Anti-Thrust Washer | BNT4807 | Level Wind Guide | BNT5432 | Brake Pipe Gear |
| BNT4116 | Screw | BNT4812 | Side Plate Cam Lever | BNT5433 | Brake Case |
| BNT4117 | Bushing | BNT4814 | Screw | BNT5434 | Washer |
| BNT4187 | Ball Bearing | BNT4815 | Washer | BNT5435 | Left Side Plate |
| BNT4194 | Ball Bearing | BNT4817 | Screw | BNT5436 | Left Side Plate Assembly |
| BNT4316 | Screw | BNT4818 | Washer | BNT5440 | Handle Shank Assembly |
| BNT4389 | Yoke Spring | BNT4819 | Idle Gear | BNT5441 | Handle Assembly |
| BNT4390 | Yoke | BNT4824 | Drag Washer | BNT5442 | Right Side Plate |
| BNT4392 | Clutch Cam | BNT4831 | Drive Gear | BNT5443 | Worm Shaft |
| BNT4431 | Washer | BNT4856 | Washer | BNT5444 | Pinion Gear |
| BNT4502 | Clutch Pawl Spring | BNT4939 | Click Spring | BNT5463 | Screw |
| BNT4538 | Clutch Cam Retainer | BNT4956 | Screw | BNT5464 | Br Dial |
| BNT4564 | Screw | BNT4959 | Washer | | |
| BNT4611 | Screw | BNT4981 | O Ring | BNT3174 | Reel Seat Spacer (accessory) |
| BNT4614 | Handle Knob | BNT5086 | Handle Retainer | BNT4692 | B-100 Oil (accessory) |