

NOTES: UNLESS OTHERWISE SPECIFIED
 1. FOR GENERAL SERIES SPECIFICATIONS, SEE SD74-0000.

2. MATERIAL SPECIFICATIONS:
 B05 PER UNS 53800

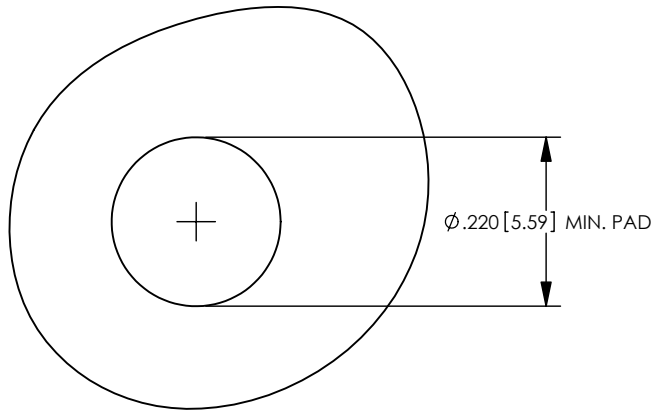
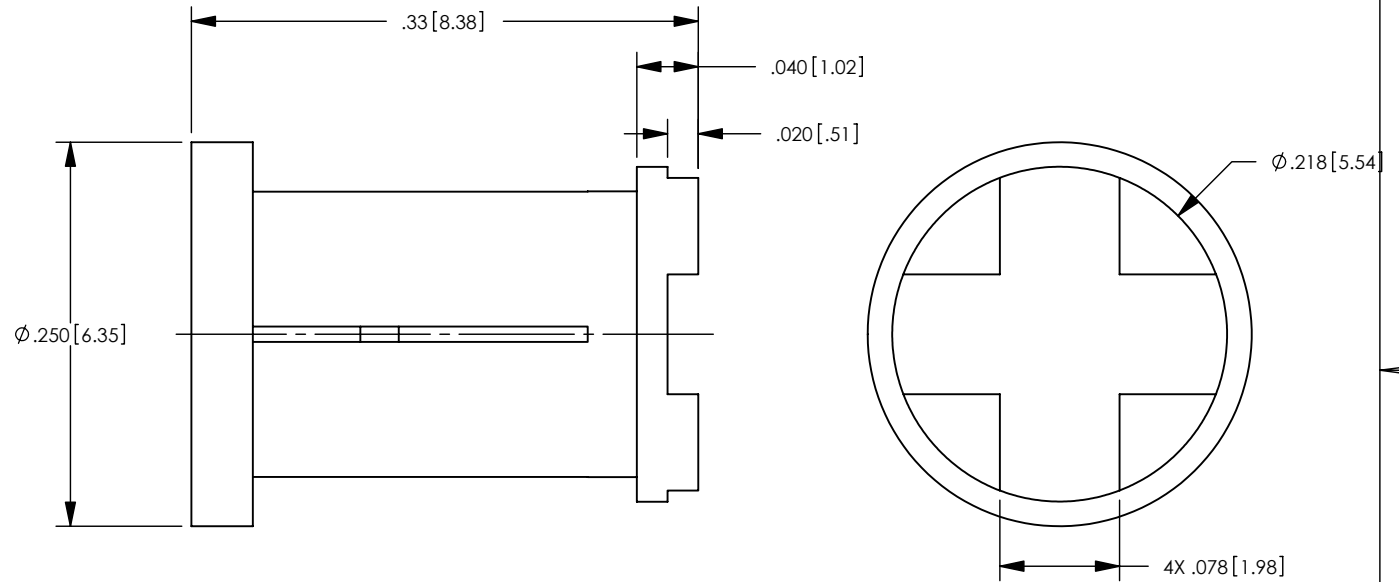
3. FINISH SPECIFICATIONS:
 .000030 MIN. GOLD OER ASTM B488 OVER .000050 MIN. NICKEL PER AMS QQ-N-290.

4. ELECTRICAL SPECIFICATIONS:
 CURRENT RATING: 20 AMP.

5. FOR USE WITH 14 GA WIRE OR EQUIVALENT.

6. REFER TO CAP10-01 FOR CABLE ASSEMBLY PROCEDURE.

REV	DESCRIPTION	BY DATE	APPD
B	REVISED PER ER7306	CMB 04/14/08	CMB



RECCOMENDED P.C. BOARD LAYOUT
 SCALE 4:1

CATALOG P/N: 01307

PER ASME Y14.5M-1994 UNLESS OTHERWISE SPECIFIED: DIMENSIONS ARE IN INCHES [MM] TOLERANCES: DECIMAL: .XX [X.X] ± .01 [0.3] .XXX [X.XX] ± .005 [0.13] .XXXX [X.XXX] ± .XXXX ANGLES: ± 2° SCALE: 8:1				 Winchester Electronics Corporation 62 Barnes Industrial Road North Wallingford, Connecticut 06492	
CUSTOMER DRAWING				40 AMP POWER RECEPTACLE	
DRAWN	DATE	APPROVED	DATE	A	SD01307
JWH	10/16/00	JED	10/18/00		
APPROVED	DATE	APPROVED	DATE	SHT 1 OF 1	REV B
JMC	10/18/00	KJT	10/18/00		