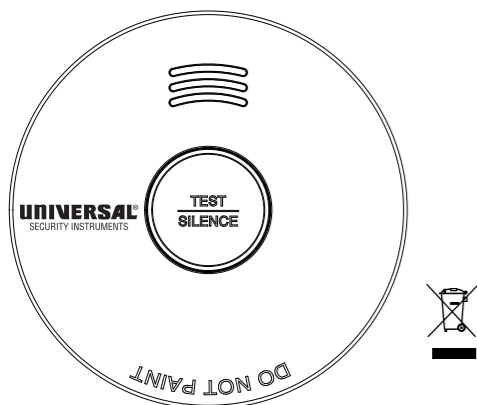


UNIVERSAL[®]

SECURITY INSTRUMENTS

2-in-1 Smoke & Fire Alarm 10 year Battery Instruction Manual



Thank you for purchasing our smoke alarm. Please take a few minutes to read the user's manual thoroughly and save the document for future reference and to pass on to any subsequent owner. Teach children how to respond to the alarm, and they should never play with the unit. This alarm was designed for residential environment. It is not designed for use in a recreational vehicle(RV) or boat. The National Fire Protection Association (NFPA) and the manufacturer recommend replacing this alarm ten years from the date code on back of alarm.

Supplier's Declaration of Conformity:

47 CFR § 2.1077 Compliance Information

Responsible Party: Feit Electric Company, Inc.

4901 Gregg Road, Pico Rivera, CA 90660, USA

www.feit.com

Unique Identifier: USI/SM/10YR/MINI and USI/SM/10YR/MINI/3

COMPLY WITH: UL 217-9th

Product Specifications

- **POWER:** Built-in DC3V(CR-2/3AZ) Lithium battery (battery not replaceable)
- **OPERATION CURRENT:** <10uA (standby), <80mA (alarm)
- **ALARM VOLUME:** >85 dB (A) at 3 meters.
- **ALARM SENSITIVITY:** 1.59-2.80%/ft.
- **SILENCE PERIOD:** Approx. 8 minutes.
- **SMOKE ALARM SOUND PATTERN:** Temporal 3 Bl 0.5s - pause 0.5s - Bl 0.5s -pause 0.5s-Bl0.5s-pause 1.5s, with the red LED flash, repeat this alarm pattern.

Description

This unit is a photoelectric smoke alarm. Meets the testing requirement of UL 217-9th. The photoelectric technology, it is more sensitive in detecting slow smoldering fires which generate light smoke, little heat and may smolder for hours before bursting into flames. This smoke alarm does not contain any radioactive material. Smoke alarms should be installed in every room (except the bathroom and kitchen), finished attics and basements, making sure the people in the home will be able to hear and respond to the alarm sound. For minimum protection, you should install an alarm on every level of the home particularly outside sleeping rooms. Each alarm should be placed in the middle of the ceiling of each room to be protected.

Typical single story dwelling installation recommendations: Install a smoke alarm on the ceiling or wall inside each bedroom and in the hallway outside each separate sleeping area.

If there is a basement: install a smoke alarm on the basement ceiling at the bottom of the stairwell.

Typical multi-story dwelling installation recommendations: Install a minimum of one smoke alarm on each occupiable level of the home. Install a smoke alarm on the ceiling or wall inside each bedroom and in the hallway outside each separate sleeping area. If a bedroom area hallway is more than 30 feet long, install a smoke alarm at each end, install a smoke alarm at the top of a first – to- second floor stairwell.

Important Safety Information

1. The test button accurately tests smoke alarm functions. Do not use any other test method. Test smoke alarm weekly to ensure proper operation.
2. If you're certain it's not a real alarm, open windows or use a fan to clear the air around the smoke alarm to test and silence it.
3. Install this product in accordance with all local and national electrical codes and building regulations.
4. This smoke alarm is intended for use in single-family homes only. In multifamily buildings, each living unit should have its own smoke alarms. Do not install it in non-residential buildings, as it is not a substitute for a complete alarm system
5. Install a smoke alarm in every room and on every level of your home. Smoke may not reach the alarm if a fire starts in a remote area, on another level, in a chimney, wall, roof, or behind a closed door. Keep in mind that a smoke alarm can only detect fires promptly in the room or area where it's installed.
6. Smoke alarms are loud to warn of potential danger, but they may not alert every household member in every situation (e.g., background noise, deep sleepers, alcohol or drug use, or hearing impairments). If you think someone in your household might not hear the alarm, consider installing specialty alarms with lights or vibrating devices. It's essential that everyone can hear and respond quickly to reduce the risk of injury or death from fire.
7. Smoke alarms can only sound when they detect smoke or combustion particles in the air; they do not sense heat, flames, or gas. While this alarm is designed to provide an audible warning of a developing fire, some fires may spread too quickly for smoke to reach the alarm in time, so practicing fire safety at home is essential.
8. Smoke alarms have limitations and are not guaranteed to protect lives or property from fire. They are not a substitute for insurance, so homeowners and renters should maintain adequate coverage. Since smoke alarms can fail at any time, test them weekly and replace them every 10 years.

Locations to avoid

- In the garage. Products of combustion are present when you start your automobile.
- Less than 4" (10cm) from the peak of an "A" frame type ceiling.
- In an area where the temperature may fall below 40 °F or rise above 100 °F, such as garages and unfinished attics.
- In dusty areas. Dust particles may cause nuisance alarm or failure to alarm. In very humid areas (greater than 85% R.H.). Moisture or steam can cause nuisance alarms.
- In insect-infested areas.
- Smoke alarms should not be installed within 3 ft (.9m) of the following: the door to a kitchen, the door to a bathroom containing a tub or shower, forced air supply ducts used for heating or cooling, ceiling or whole house ventilating fans, or other high airflow areas.
- Kitchens. Normal cooking may cause nuisance alarms. If a kitchen alarm is desired, it should have an alarm silence feature or be a photoelectric type.
- Near fluorescent lights. Electronic "noise" may cause nuisance alarms.
- Smoke alarms are not to be used with detector guards.

Operation Testing

Test the unit weekly by pressing the test button to ensure it's working properly. If the circuitry, horn, and battery are functioning, the alarm will sound. If it doesn't, the battery may be low, or there could be another issue—refer to the "Troubleshooting" section for help.

CAUTION: DO NOT USE AN OPEN FLAME TO TEST THE ALARM, AS IT COULD DAMAGE THE UNIT OR IGNITE COMBUSTIBLE MATERIALS, CAUSING A FIRE.

CAUTION: THE ALARM IS LOUD (85 DECIBELS), SO ALWAYS STAND AT ARM'S LENGTH WHEN TESTING IT. TEST THE ALARM WEEKLY TO ENSURE IT'S WORKING PROPERLY. IF THE SOUND IS LOW OR ERRATIC, THE ALARM MAY BE DEFECTIVE—REFER TO THE "TROUBLESHOOTING" SECTION FOR A SOLUTION.

NOTE: WEEKLY TESTING IS REQUIRED

LED Indicators: This smoke alarm is equipped with red LED indicator.

Standby Condition: The red LED will flash every 48 seconds to indicate that the smoke alarm is operating properly.

Alarm Condition: When the alarm senses products of combustion and goes into alarm, the red LED will flash rapidly (one flash per second).The rapid flashing LED and pulsating alarm will continue until the air is cleared or the test button is released.

Silence Condition: The red LED will flash every 8 seconds as long as the alarm is in Hush mode.

Low Battery Warning: An intermittent "chirp" with a red LED flash every 48 seconds indicates a low battery. You can press the test button to silence the chirp for 10 hours, but it will resume automatically after that. The smoke alarm will continue to function normally and sound an alarm if smoke is detected, even while the chirp is temporarily silenced.

NOTE: Since the battery in this unit is not replaceable, a low battery signal indicates the alarm has reached the end of its life. The alarm **MUST** be replaced as soon as possible

Fault Indication: This chirp will occur between the flashes of the red LED indicator light.

Battery discharge Condition: The red LED will be on.

NOTE: When the unit chirps once every 48 seconds, pressing the test button will temporarily silence the warning for 10 hours. Refer to the "Troubleshooting" section for solutions. If the fault signal returns, you **MUST** replace the unit immediately or contact your retailer if it is still under warranty

Smoke Sensing Chamber Operation: This alarm will "chirp" if any of the components in the smoke sensing chamber fail. This chirp will occur between the flashes of the red LED indicator light. (If the chirp occurs at the same time as the red LED flash, indicating a low battery information).

Alarm Silence

When the alarm sounds, always check for a fire first. If no fire is found, you can silence the alarm by pressing the test button, which will mute it for about 8 minutes. During this time, the red LED will flash once every 8 seconds to indicate the alarm is in silence mode.

End-of-Life Reset

When the device enters the end-of-life warning state in the first 30 days, press thebutton to reset the end-of-life. At this point, if the device is still available. it will enterthe normal standby state for 10 hours, after 10 hours, the device will return to the end-of-life warning state. After 30 days of the first end-of-life warning state, the device can no longer be reset and needs to be replaced in a timely manner.

To reduce false alarms, install smoke alarms at least 10 feet (3 meters) from cooking appliances, as cooking particles can trigger the alarm. If smoke accidentally sets it off, open doors and windows, and use a fan to clear the air. The silence feature is especially helpful in kitchens or areas prone to nuisance alarms, and it should only be used for known causes, like cooking smoke. While in silence mode, the alarm is temporarily desensitized but will reset automatically after 8 minutes. If smoke or combustion particles remain, the alarm will sound again. You can use the silence feature as needed until the air is clear.

NOTE: Dense smoke will override the alarm silencer and sound a continuous alarm.

CAUTION: Before using the alarm silence, identify the source of the smoke and be certain a safe condition exists.

DANGER: If the alarm sounds, and it is not being tested, it means the unit is sensing smoke, THE SOUND OF THE ALARM REQUIRES YOUR IMMEDIATE ATTENTION AND ACTION.

Low Battery Status: An intermittent "chirp" with a flashing red LED every 48 seconds indicates that the battery has reached a low voltage state. Since the battery is non-replaceable, you must replace the smoke alarm within 7 days to maintain uninterrupted protection. To prevent sleep disruption, you can temporarily silence the chirp by pressing the test button, which will mute the warning for 10 hours. After that, the chirp will resume, reminding you to replace the alarm.

Maintenance and Cleaning

In addition to weekly testing, the alarm requires periodic cleaning to remove dust, dirt, and debris. Clean it at least once a year using a vacuum cleaner with a soft brush, gently vacuuming all sides and covers. This alarm has a low battery monitor that will "chirp" every 48 seconds, accompanied by a red LED flash, for at least 30 days when the battery is low. For defective batteries or other issues, refer to the "Troubleshooting" section. If problems persist during the warranty

period, you can return the alarm to your retailer.

WARNING: The battery is sealed and is not replaceable. Please replace with new alarm if the low battery chirp occurs.

IMPORTANT: Do not attempt to remove the cover to clean inside. This will void the warranty.

WHAT TO DO WHEN THE ALARM SOUNDS

1. Alert small children and anyone else who may need assistance leaving the area safely.
2. Leave immediately following your escape plan. Every second counts—don't waste time getting dressed or gathering valuables.
3. While leaving, don't open any inside door without first feeling its surface. If hot, or if you see smoke seeping through cracks, don't open that door! Instead, use your alternate exit. If the inside of the door is cool, place your shoulder against it, open it slightly and be ready to slam it shut if heat and smoke rush in.
4. Stay close to the floor if the air is smoky. Breathe shallowly through a cloth, wet if possible.
5. Once outside, go to your selected meeting place and make sure everyone is there.
6. Call the fire department from your neighbor's home -not from yours!
7. Don't return to your home until the fire officials say that it is all right to do so.
8. There are situations where a smoke alarm may not effectively prevent fire hazards, as outlined in NFPA Standard 72, including:
 - a. Smoking in bed
 - b. Leaving children home alone
 - c. Cleaning with flammable liquids, such as gasoline

Note: These guidelines will assist you in the event of a fire, however, to reduce the chance that fires will start, practice fire safety rules and prevent hazardous situations.

Repair

Caution: Do not attempt to repair the alarm, as this will void your warranty. If the alarm is malfunctioning and still under warranty, return it to the original place of purchase in a well-padded carton. If it is no longer under warranty, have a licensed electrician replace it with a comparable alarm immediately.

Troubleshooting:

Trouble Condition	Action
Smoke alarm does not sound when tested.	<ol style="list-style-type: none"> 1. Test alarm before installation 2. Clean smoke alarm. Please refer to the "maintenance and cleaning" section. 3. If problems persist and the unit is still under warranty, you can return to your retailer. 4. if the unit is out of warranty, please replace another new alarm.
An intermittent "chirp" accompanied by a red LED flash every 48 seconds.	The battery is depleted, please replace the smoke alarm.
Smoke alarm chirp occurs every 48 seconds only (alarm goes into fault mode).	Clean smoke alarm. Please refer to the "maintenance and cleaning" section. Replace smoke alarm if the problem persists.
Smoke alarm sounds unwanted alarms intermittently or when residents are cooking, taking showers, etc.	<ol style="list-style-type: none"> 1. Press test button to silence alarm. 2. Clean smoke alarm. Please refer to the "maintenance and cleaning" section. 3. Move smoke alarm to new location and press test button.
Smoke alarm double chirp every 48 seconds (alarm goes into End-of-life mode).	Remove, discharge and replace as soon as possible.
The alarm sounds different from it is used to. It starts and stops.	<ol style="list-style-type: none"> 1. Clean smoke alarm. Please refer to the "maintenance and cleaning" section. 2. If the problem persists during the warranty period, return the alarm to your retailer. 3. If Problem persists and the unit is out of warranty, replace with new unit.

DEVELOP AND PRACTICE A PLAN OF ESCAPE

- Install and maintain fire extinguishers on every level of the home and in the kitchen, basement and garage. Know how to use a fire extinguisher prior to an emergency.
- Make a floor plan indicating all doors and windows and at least two (2) escape routes from each room. Second story windows may need a rope or chain ladder. Have a family meeting and discuss your escape plan, showing everyone what to do in case of fire.
- Determine a place outside your home where you all can meet if a fire occurs. Familiarize everyone with the sound of the smoke alarm and train them to leave your home when they hear it.
- Practice a fire drill at least every six months, including fire drills at night. Ensure that small children hear the alarm and wake when it sounds. They must wake up in order to execute the escape plan. Practice allows all occupants to test your plan before an emergency. You may not be able to reach your children. It is important they know what to do.
- Current studies have shown smoke alarms may not awaken all sleeping individuals, and that it is the responsibility of individuals in the household that are capable of assisting others to provide assistance to those who may not be awakened by the alarm sound, or to those who may be incapable of safely evacuating the area unassisted.

RECOMMENDED LOCATIONS FOR ALARMS

This equipment should be installed in accordance with the National Fire Protection Association's 72 (National Fire Protection Association, Battery March Park, Quincy, MA 02269).

- Typical installation drawing and layouts for the unit(s) indicating recommended locations and wiring methods which shall be in accordance with the applicable requirements outlined in the following:
 1. National Electrical Code, NFPA 70, Wiring Methods and Materials;
 2. National Fire Alarm and Signaling Code, NFPA 72, Single and Multiple-Station Alarms and Household Fire Alarm Systems for US requirement.
- Place the first alarm near the bedrooms to monitor the exit path, as bedrooms are often farthest from the exit. If there are multiple sleeping areas, install additional alarms in each one.
- Place additional alarms near stairways, as they can funnel smoke and heat like chimneys.
- For mobile homes, choose installation locations carefully to avoid thermal barriers that can form near the ceiling (see MOBILE HOME INSTALLATION below for more details).
- When mounting an alarm on the ceiling, ensure it is at least 4" (10 cm) away from the side wall (see Diagram 2).
- If mounting on a wall, place it on an inside wall with the top edge of the alarm 4" (10 cm) to 12" (30.5 cm) below the ceiling (see Diagram 2).
- In long hallways or large rooms over 30 ft (9.1 m) in length, install smoke alarms at both ends for better coverage.
- Install smoke alarms on sloped, peaked, or cathedral ceilings at or within 3 ft (0.9 m) of the highest point, measured horizontally. According to NFPA 72, "Smoke alarms in rooms with ceiling slopes greater than 1 ft in 8 ft (0.3 m in 2.4 m) horizontally shall be located on the high side of the room." Additionally, NFPA 72 states, "A row of alarms shall be spaced and located within 3 ft (0.9 m) of the peak of the ceiling, measured horizontally" (see Diagram 3).

The National Fire Protection Association's Standard 72 provides the following guidelines:

1. Install alarms in all sleeping rooms and guest rooms.
2. Place alarms outside each separate sleeping area, within 21 ft (6.4 m) of any bedroom door, following the path of travel.
3. Install alarms on every level of the home, including basements.
4. For residential board and care facilities (small occupancy), install alarms on every level, including basements, but excluding crawl spaces and unfinished attics.
5. Install alarms in the living areas of guest suites.
6. Install alarms in the living areas of residential board and care facilities (small occupancy).

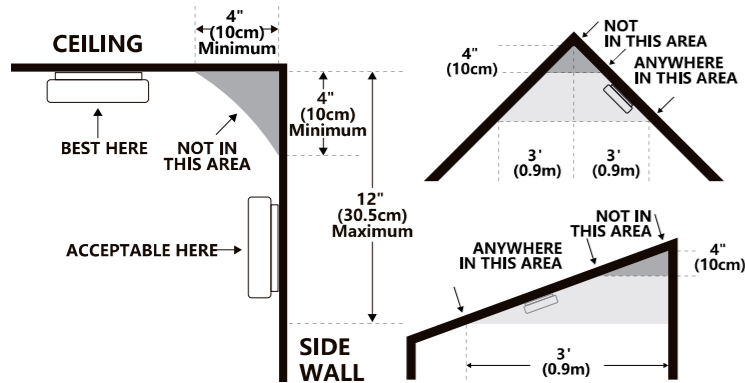


Diagram 2

Diagram 3

There are various situations against which the smoke alarm may not be effective, for example:

1. Fires where the victim is intimate with a flaming initiated fire; for example, when a person's clothes catch fire while cooking;
2. Fires where the smoke is prevented from reaching the smoke alarm due to a closed door or other obstruction;
3. Incendiary fires where the fire grows so rapidly that an occupant's egress is blocked even with properly located smoke alarms.

MOBILE HOME INSTALLATION

Modern mobile homes are built to be energy efficient. Follow the standard smoke alarm installation recommendations. However, in older mobile homes with less insulation, extreme heat or cold from the outside can transfer through poorly insulated walls and roofs. This may create a thermal barrier that prevents smoke from reaching a ceiling-mounted alarm.

In such cases, install the smoke alarm on an interior wall with the top edge of the alarm no more than 12" (30.5 cm) below the ceiling. If you're unsure about the insulation quality of your mobile home or notice that the exterior walls and ceiling feel hotter or colder than the room air, place the alarm on an interior wall.

NFPA 72 (National Fire Protection Association) requires smoke alarms to be installed in each sleeping area.

MULTIPLE FLOOR PLAN

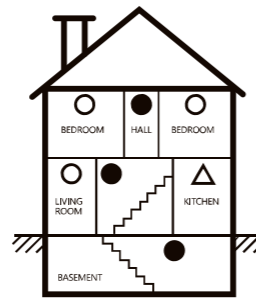


Diagram 4

SINGLE FLOOR PLAN

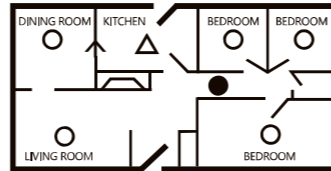


Diagram 5

- Smoke Alarms for Minimum Protection
- Smoke Alarms for Additional Protection
- △ Ionisation Type Smoke Alarm with Alarm Silencer or Photoelectric Type

ATTENTION: Test your smoke detector after removing your caravan or mobile home from storage, before each journey and at least once a week during use.

ATTENTION: Smoke alarms are not to be used with smoke alarm guards unless the combination has been evaluated and found suitable for that purpose.

Installation:

Activation: Pull out the battery tab to activate your smoke alarm. (Refer to Diagram 6).

CAUTION: this unit must be activated prior to installation. Failure to properly install and activate this alarm will prevent proper operation of this alarm and will prevent its response to fire hazards.

CAUTION: This device requires a continuous supply of electrical power from a healthy battery or AC connection, depending on the model. It will not work without power.

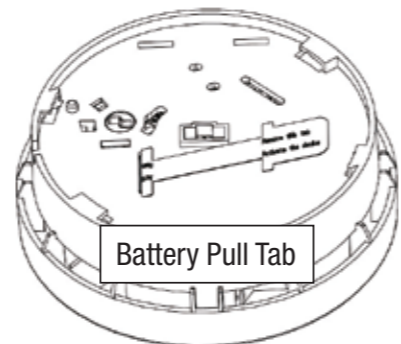


Diagram 6

- Turn the alarm body counterclockwise to remove it from the bracket.
- Hold the bracket in the desired installation position, following the Recommended Locations, and mark the installation holes with a pencil.
- Drill the two marked holes using a drill bit, and tap the plastic anchors into the holes with a hammer.
- If needed, remove the locking plug from the bracket using a screwdriver (see Diagram 8). This feature offers optional extra security.
- Mount the bracket to the ceiling by tightening the supplied screws into the plastic anchors (see Diagram 7).
- Place the alarm onto the bracket and rotate it clockwise until it clicks securely into place.
- Optionally, insert the locking plug into the gap between the bracket and the alarm body to lock it in place (see Diagram 9).
- Press the test button to ensure the unit is working. The alarm should sound three beeps followed by a 1.5-second pause, repeating until the button is released. If no sound is heard, the alarm may be defective—refer to the "Troubleshooting" section or contact your retailer if still under warranty.

WARNING: To prevent injury, this unit must be securely attached to the wall or ceiling in accordance with the installation instructions.

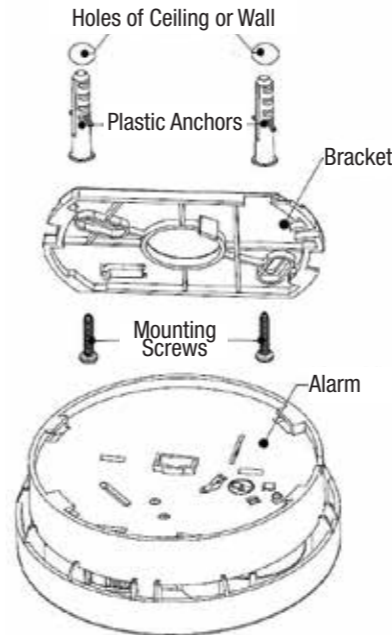


Diagram 7



Diagram 8



Diagram 9

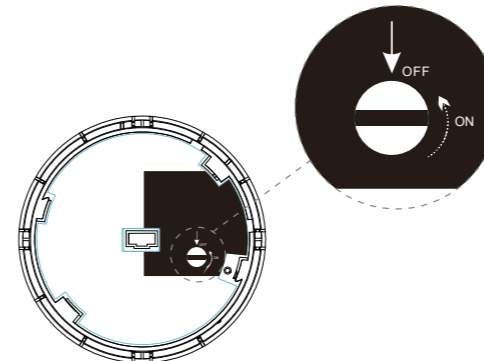


Diagram 10

Scrap and disposal:

When the battery reaches the end of its life, the alarm will emit an intermittent "chirp" with a red LED flash every 48 seconds. Follow these steps to properly dispose of the alarm, and replace it with a new one immediately:

1. Rotate the alarm counterclockwise to remove it from the bracket.
2. Use a screwdriver to remove the screws and detach the bracket.
3. Insert a screwdriver into the red plastic part on the base cover (see Diagram).
4. Turn the screwdriver counterclockwise from the ON position to the OFF position.
5. The red LED will light up, indicating the battery is discharging.
6. Allow at least one day for the battery to exhaust. Dispose of the alarm according to local regulations.

Note:

- The red LED turning off does not confirm full battery exhaustion. Allow the battery to discharge for at least seven days.
- Use this method to dispose of alarms that are out of warranty.
- If the alarm is still under warranty, return it to the retailer for a replacement.
- Once the battery is fully discharged, the alarm cannot be reinstalled.

California State Fire Marshal

Early warning fire detection is best achieved by the installation of fire detection equipment in all rooms and areas of the household as follows: A smoke alarm installed in each separate sleeping area (in the vicinity, but outside the bedrooms), heat or smoke detectors in the living rooms, dining rooms, bedrooms, kitchens, hall-ways, attics, furnace rooms, closets, utility and storage rooms, basements and attached garages.

Warranty information

TEN-YEAR LIMITED WARRANTY

This product is warranted to be free from defects in material and workmanship for a period of 10 (ten) years from the date of purchase. For products containing a sealed battery, this warranty does not cover any damage that may be caused by the battery. Warranty does not apply to replaceable battery. This warranty applies only to the original consumer purchaser and only to products used in normal residential use and service. If this product is found to be defective, the only obligation, and your exclusive remedy, is the repair or replacement of the product, at the company's discretion, provided that the product has not been damaged through misuse, abuse, accident, modification, alteration, neglect, or mishandling. This Warranty shall not apply to any product which is found to have been improperly installed, set-up, or used in any way not in accordance with the instructions supplied with this product.

ALARM RETURNS

For replacement of this alarm under the terms of this Warranty, please contact customer service at feit.com/help for assistance. The company does not warrant, and specifically disclaims any warranty, whether express or implied, of fitness for a particular purpose, other than the warranty contained herein. No implied warranty on this product, created by state law, shall extend beyond the term of this warranty unless such law otherwise provides. The company specifically disclaims any liability and shall not be liable for any consequential or incidental loss or damage, including, but not limited to, damages to any equipment with which this product is used. Some states do not allow the exclusion or limitation of incidental or consequential damages, so the above limitations or exclusions may not apply to you. No agent, representative, dealer, or employee of the company has the authority to increase or alter the obligations or terms of this Warranty. This Warranty gives you specific legal rights and you may also have other rights which vary from state to state. This Warranty is only valid for merchandise purchased from outlets in the United States and Canada. This warranty expires upon product end-of-service life signal.