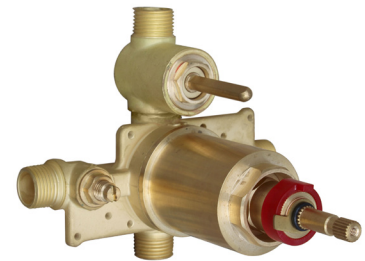


SPEAKMAN® SM-5410

SentinelPro™ Thermostatic/Pressure Balance Shower System

FEATURES:

- Speakman SentinelPro concealed anti-scald thermostatic/pressure balance shower/bath valve combinations with integral volume control.
- Chrome plated Brass wall plate with metal index. Chrome plated metal lever handle.
- Adjustable temperature limit stop (TLS). Factory set @ 110°F.
- Brass body with integral spring check stops.
- Dual function thermostatic/pressure balance cartridge.
- Can be installed back-to-back. Includes rough-in template.
- S-2272-E2 showerhead with flow control device reduces flow to a maximum of 2.0 gpm (7.6 L/min).
- S-2500 shower arm and wall flange.
- Four port valve with ½ in. female Copper sweat and ½ in. NPT male inlets and outlets.
- Furnished with ½ in. cap.
- Valve construction is Forged Brass Body and Brass Bonnet.
- Maximum capacity is 4.3 gpm +/- .2 @ 45 psi.
- Maximum Hot Water Supply Temperature is 185°F.
Minimum Hot Water Supply Temperature is 5°F above set point.
- Maximum operating temperature is 120°F.
- Valve Temperature Set Point is 110°F (Based on 115-120°F hot & 55-65°F Cold).
- Maximum Static Pressure is 125 psi.
- Minimum flow (for +/-3°F performance) meets ASSE 1016 to 1.5 gpm (5.7 L/min).



FINISH:



PC

COMPLIANCE:

- Meets ASSE 1016 & ASME 112.18.1/CSA B125.1 standards (SM-5400 Combo)
- WaterSense certified (S-2272-E2 shower head)

OPTIONS: Add suffix to model

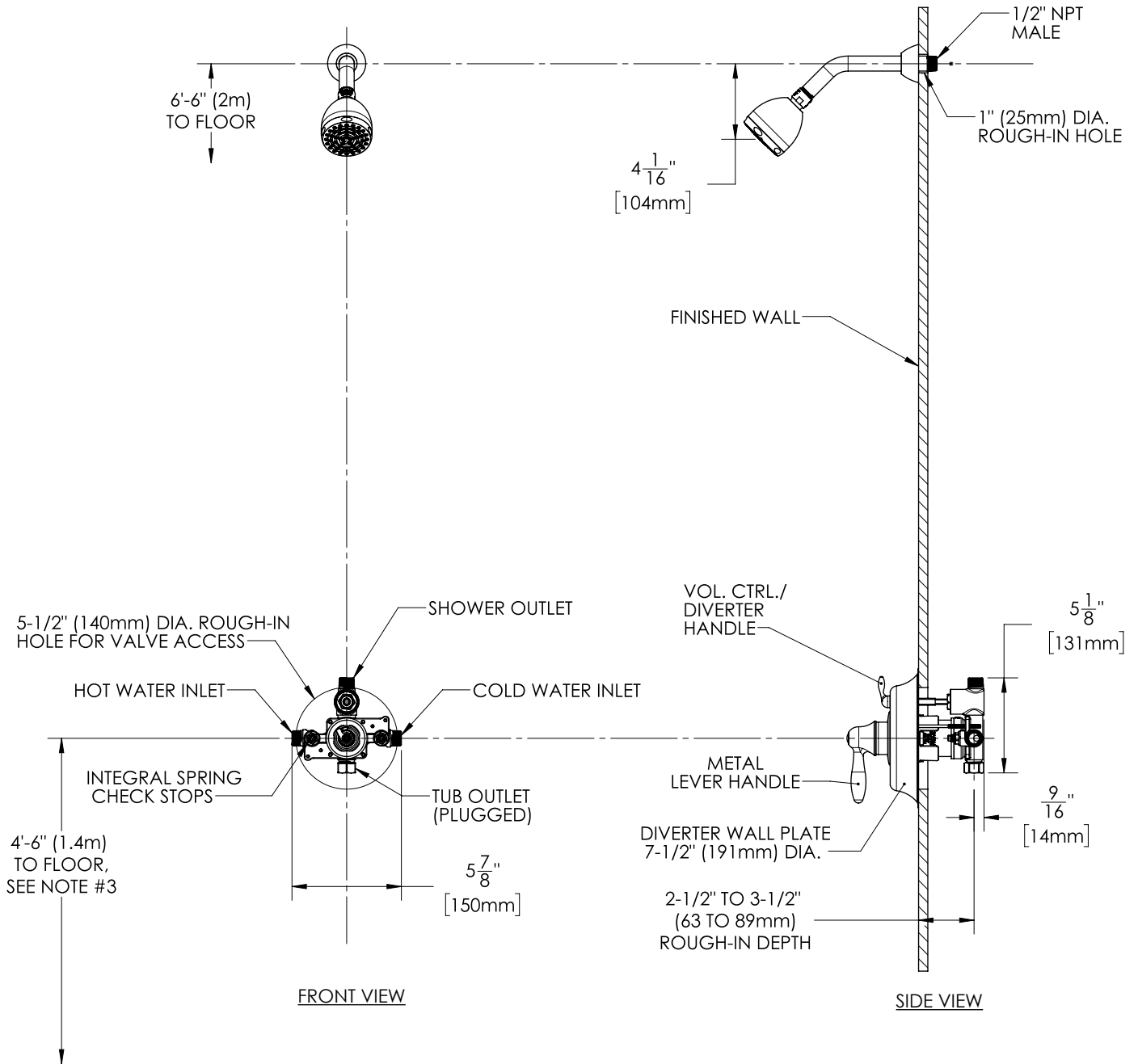
- Less showerhead -LH
- S-2251 showerhead -1
- S-2252 showerhead -2
- S-2253 showerhead -3
- S-2292 showerhead -9
- Contractor packs available

WARRANTY:

- 5 year limited

NOTE: 1. All dimensions are in inches (millimeters) unless otherwise specified and are subject to change without notice.
 2. All inlets and outlets are 1/2" female copper sweat and 1/2" male NPT unless otherwise specified. 3. For ADA mounting locations consult ADAAG, ANSI A117.1, or state regulations.

DIMENSIONS:

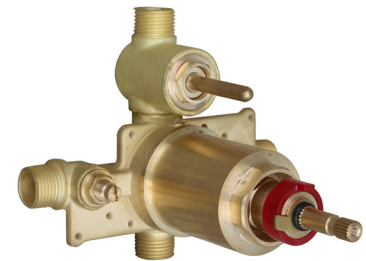


SPEAKMAN® SM-5430

SentinelPro™ Thermostatic/Pressure Balance Shower/Tub System

FEATURES:

- Speakman SentinelPro concealed anti-scald thermostatic/pressure balance shower/bath valve combinations with integral volume diverter.
- Chrome plated Brass wall plate with metal index.
- Chrome plated metal lever handle.
- Adjustable temperature limit stop (TLS). Factory set @ 110 F°.
- Brass body with integral spring check stops.
- Dual function thermostatic/pressure balance cartridge.
- Can be installed back-to-back. Includes rough-in template.
- S-2272-E2 showerhead with flow control device reduces flow to a maximum of 2.0 gpm (7.6 L/min).
- S-2500 shower arm and wall flange.
- S-1554 tub spout.
- Four port valve with ½ in. female Copper sweat and ½ in. NPT male inlets and outlets.
- Valve construction is Forged Brass Body and Brass Bonnet.
- Maximum capacity is 4.3 gpm +/- .2 @ 45 psi.
- Maximum Hot Water Supply Temperature is 185°F. Minimum Hot Water Supply Temperature is 5°F above set point.
- Maximum operating temperature is 120°F.
- Valve Temperature Set Point is 110°F (Based on 115-120°F hot & 55-65°F Cold).
- Maximum Static Pressure is 125 psi.
- Minimum flow (for +/-3°F performance) meets ASSE 1016 to 1.5 gpm (5.7 L/min).



FINISH:



PC

COMPLIANCE:

- ASSE 1016 & ASME 112.18.1/CSA B125.1 standards (SM-5400 Combo)
- WaterSense certified (S-2272-E2 shower head)

OPTIONS: Add suffix to model

- Less showerhead -LH
- S-2251 showerhead -1
- S-2252 showerhead -2
- S-2253 showerhead -3
- S-2292 showerhead -9
- Contractor Packs Available

WARRANTY:

- 5 year limited

NOTE: 1. All dimensions are in inches (millimeters) unless otherwise specified and are subject to change without notice.
 2. All inlets and outlets are 1/2" female copper sweat and 1/2" male NPT unless otherwise specified. 3. For ADA mounting locations consult ADAAG, ANSI A117.1, or state regulations.

DIMENSIONS:

