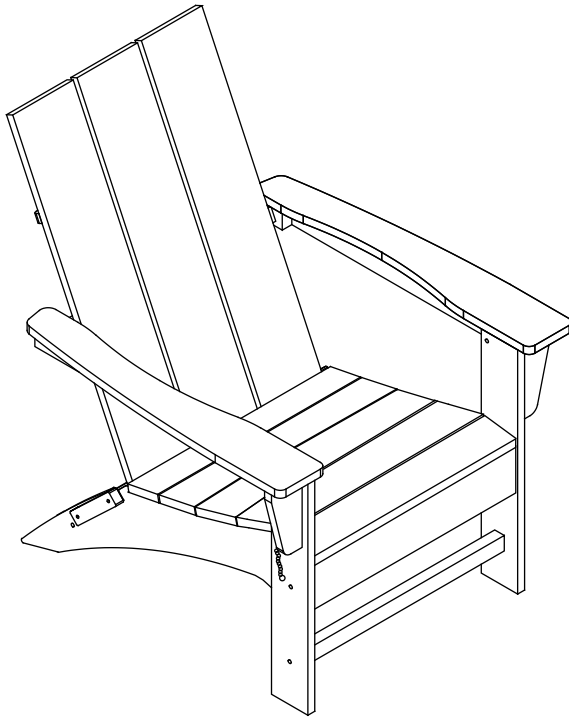


# INSTRUCTION MANUAL



**Shoreside Modern Poly  
Folding Adirondack Chair  
SKU : OP6002**

V1.0

## ! CARE & MAINTENANCE

### Please keep this instruction for your future reference.

- Please do not exceed the weight limitations of this item.
- Do not stand on or use any part of this item as a step ladder.
- Firmly secure all bolts, screws and nuts before use.
- Reconfirm that all bolts, screws, and nuts are secure every 90 days.
- Clean with lukewarm water, mild detergent & soft cloth.
- Do not use or store this item in the proximity of open flame or flammable/combustible chemicals.
- Be aware that some parts are heavy and have sharp edges.
- Be very careful when folding chair to avoid smashing your hands or fingers.

## TOOLS REQUIRED



ALLEN WRENCH  
(PROVIDED)



WRENCH  
(PROVIDED)



CHAIR  
330 LBS  
CAPACITY



1 PERSON  
ASSEMBLY

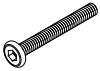


UP TO 30 MIN.  
ASSEMBLY

## HARDWARE

1

M6 x 70mm  
BOLT



2 PCS

2

M6.3 x 50mm  
SCREW



2 PCS

3

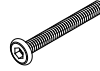
M6 x 50mm  
BOLT



6 PCS

4

M6 x 60mm  
BOLT



4 PCS

5

M6 NUT



6 PCS

6

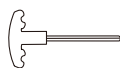
M6 WASHER



6 PCS

7

ALLEN  
WRENCH



1 PC

8

WRENCH

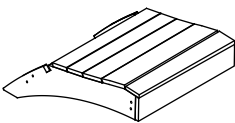


1 PC

## PARTS

A

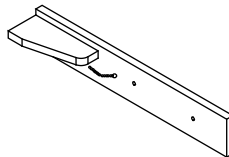
CHAIR SEAT



1 PC

B

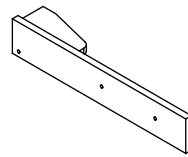
RIGHT CHAIR LEG



1 PC

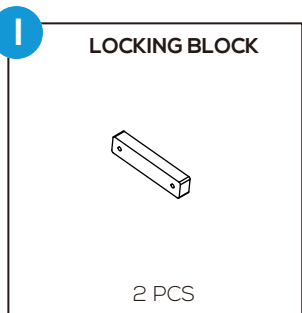
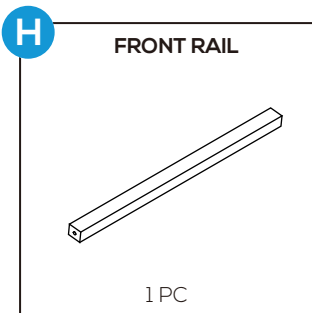
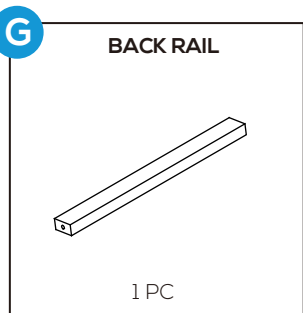
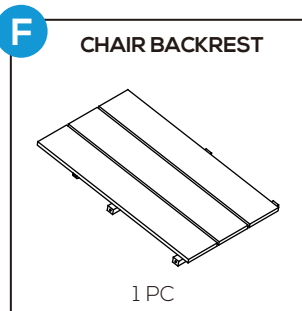
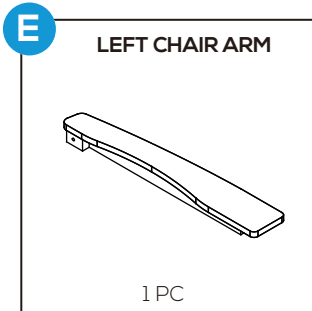
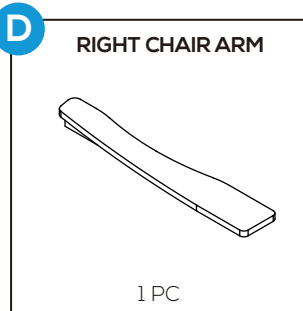
C

LEFT CHAIR LEG



1 PC

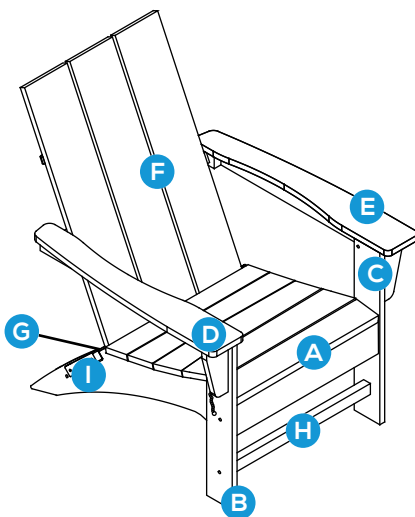
## PARTS



## PRODUCT ASSEMBLY - OVERALL VIEW

**1**

Look at following overall view of this chair and learn the exact positions of each part for your easy assembly.



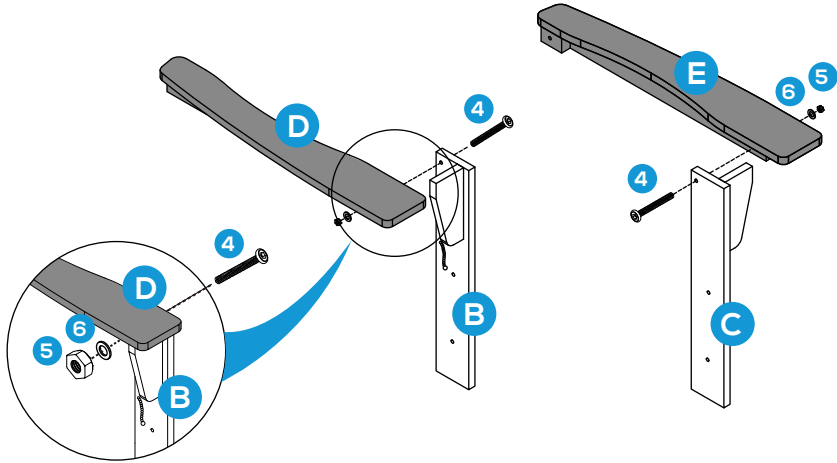
## PRODUCT ASSEMBLY

**1**

Attach part D Right Chair Arm to part B Right Chair Leg with 1 set of hardware 4 Bolt, hardware 6 Washer and hardware 5 Nut.

Do the same to attach part E Left Chair Arm to part C Left Chair Leg.

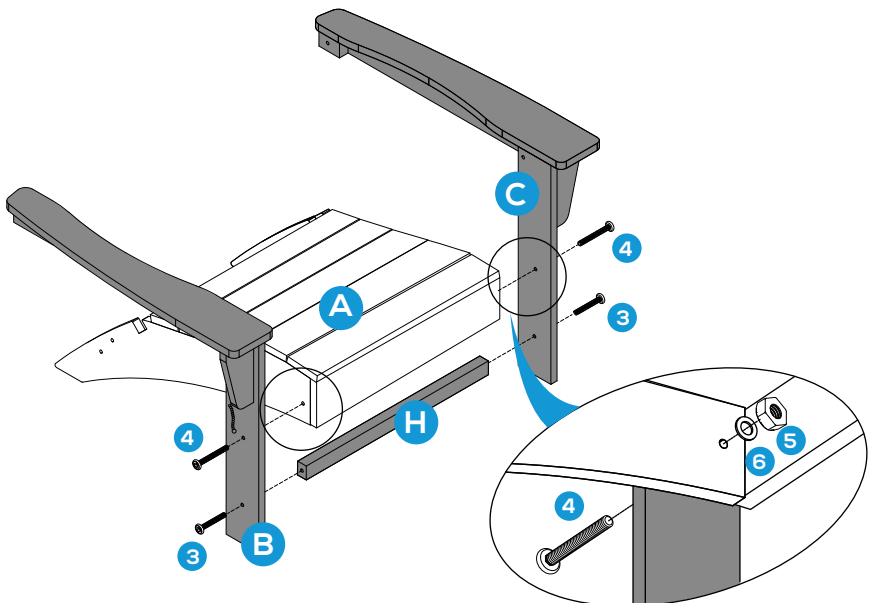
Do not tighten screws too much at this stage.



**2**

Attach part B right Chair Leg and part C Left Chair Leg to part A Chair Seat with 2 sets of hardware 4 Bolt, hardware 6 Washer and hardware 5 Nut.

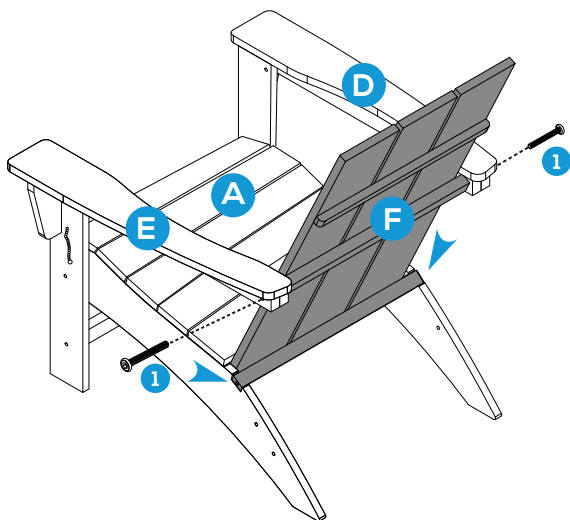
Attach part H Front Rail to part B and part C with 2 pcs of hardware 3 Bolt.



## PRODUCT ASSEMBLY

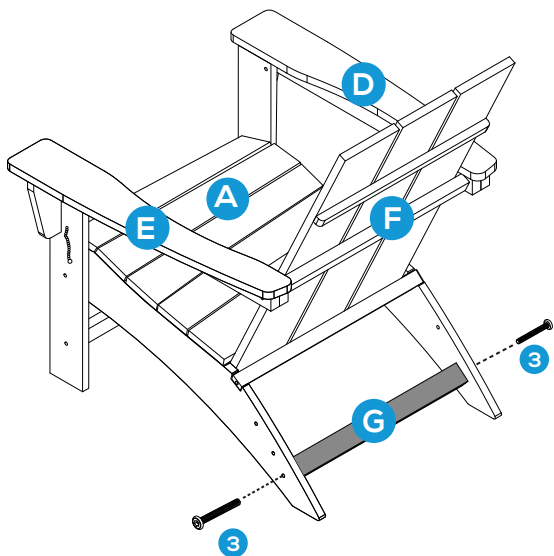
**3**

Place the bottom rail of part F Chair Backrest into the gaps on part A China Seat Rear Legs. Attach the backrest to part D Right Chair Arm and part E Left Chair Arm with 2 pcs of hardware 1 Bolt.



**4**

Attach part G Back rail to the rear legs of part A Chair Seat with 2 pcs of hardware 3 Bolt.

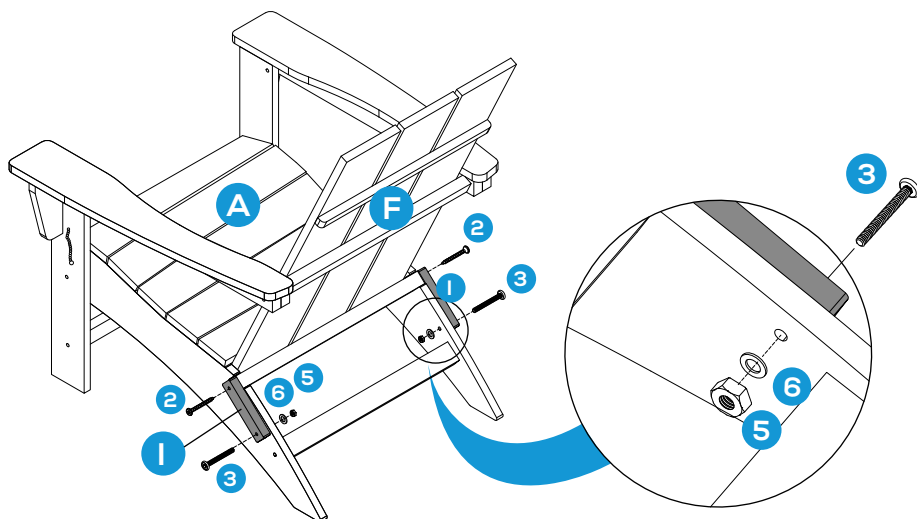


## PRODUCT ASSEMBLY

**5**

Attach part I Locking Blocks to the bottom rail of part F Chair Backrest with 2 pcs of hardware 2 Screw.

Attach part I Locking Blocks to the rear leg of part A Chair Seat with 2 sets of hardware 3 Bolt, hardware 6 Washer and hardware 5 Nut.



**6**

Attach the pin into the holes in front legs to make the chair steady to use.

The chair can be folded when unplug the pin and turn the locking rail towards the opposite of chair body.

