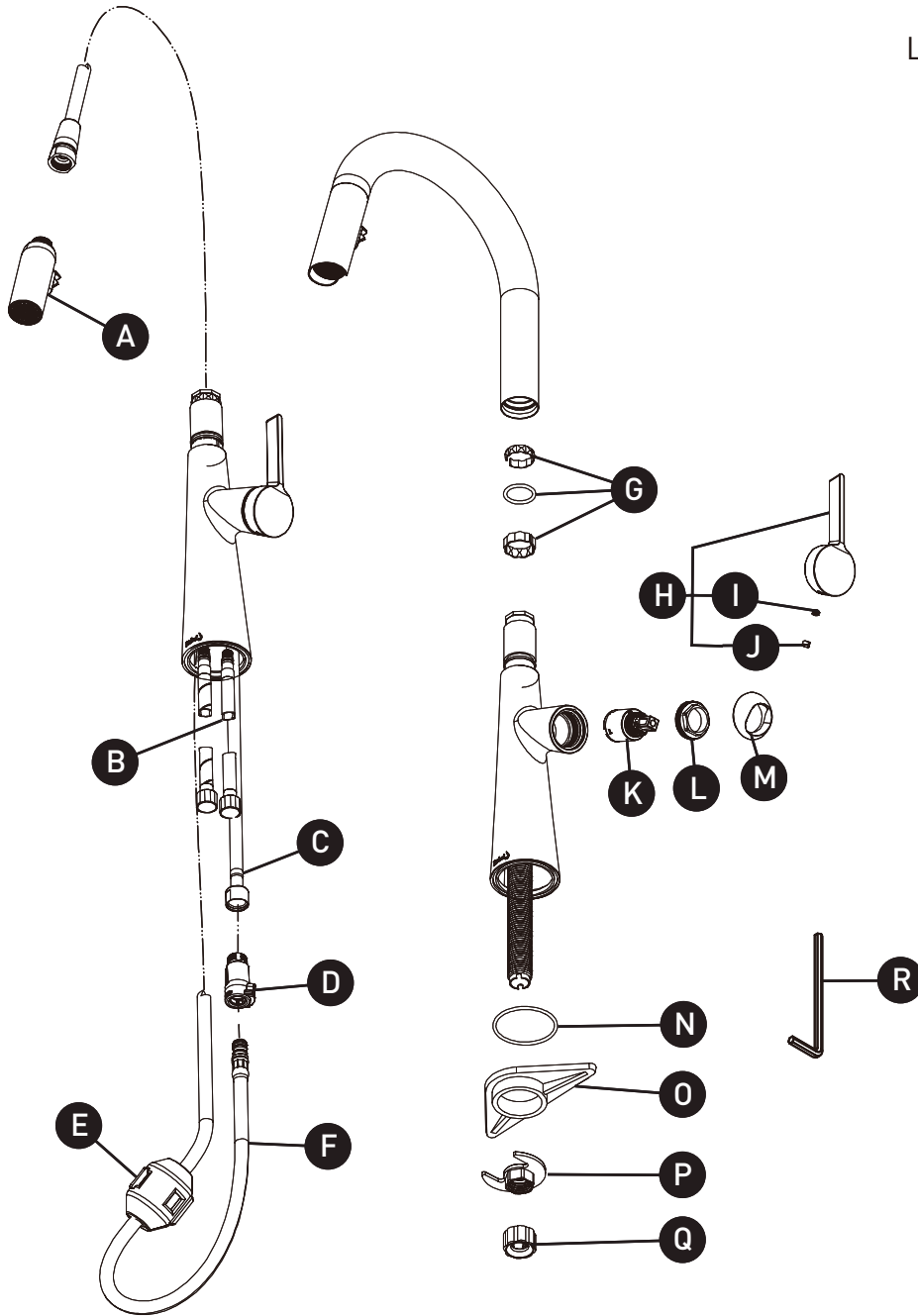


ORDER BY PART NUMBER

ILLUSTRATED PARTS

LK101

Ludik™ Pull-Down Kitchen Faucet



ID	Kit Number	Finish
A	4381	N/A
B	7108 (2x)	N/A
C	7128	N/A
D	S7-443 (1.8gpm / 6.8l/min)	N/A
	S7-443-15 (1.5gpm / 5.7l/min)	N/A
	S7-443-10 (1.0 gpm / 3.8l/min)	N/A
E	9528	N/A
F	7200	N/A
G	7489	N/A
H*	1894	See below
I	152-040	N/A
J*	003-030	See below
K	S401-039	N/A
L	305-337	N/A
M	052-073	See below
N	225-460	N/A
O	390-085	N/A
P	7462	N/A
Q	330-285	N/A
R	505-025	N/A

*Finish Determined by Suffix

Finish	Description
BG	Brushed Gold
BK	Black
C	Chrome
SS	Stainless Steel

For warranty or additional information, contact:

U.S.A.
houseofrohl.com/support
1-800-777-9762

QUEBEC / MARITIMES / WESTERN CANADA
QUÉBEC / MARITIMES / OUEST CANADIEN
QUEBEC / MARITIMOS / CANADA OCCIDENTAL
houseofrohl.ca/support
1-866-473-8442

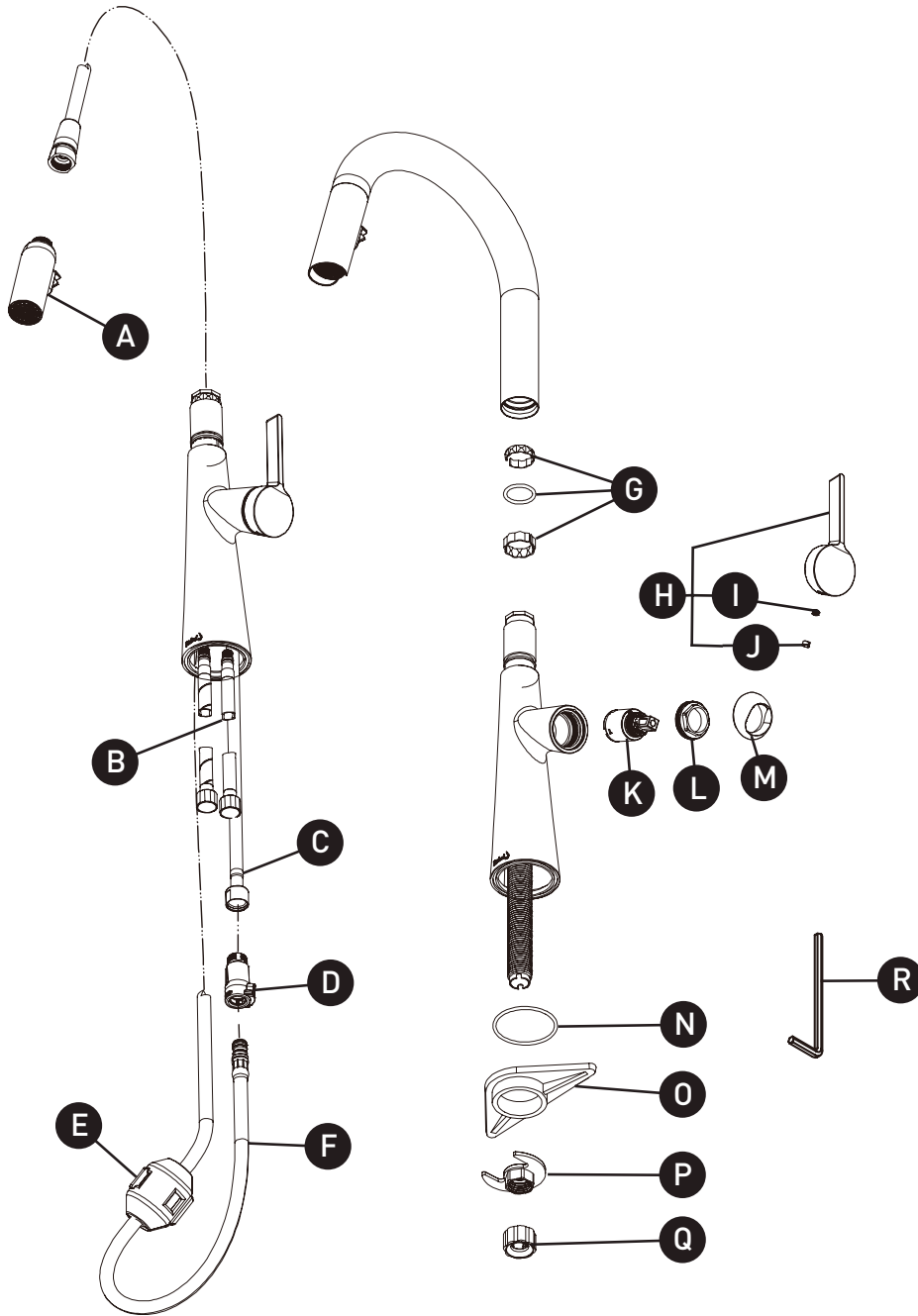
ONTARIO
houseofrohl.ca/support
1-800-287-5354

VEUILLEZ EFFECTUER VOTRE COMMANDE
PAR NO DE RÉFÉRENCE

ILLUSTRATIONS DES PIÈCES

LK101

Robinet de cuisine Ludik™ avec
douchette



ID	Référence du kit	Finition
A	4381	N/A
B	7108 (2x)	N/A
C	7128	N/A
D	S7-443 (1.8gpm / 6.8l/min)	N/A
	S7-443-15 (1.5gpm / 5.7l/min)	N/A
	S7-443-10 (1.0 gpm / 3.8l/min)	N/A
E	9528	N/A
F	7200	N/A
G	7489	N/A
H*	1894	Voir ci-dessous
I	152-040	N/A
J*	003-030	Voir ci-dessous
K	S401-039	N/A
L	305-337	N/A
M	052-073	Voir ci-dessous
N	225-460	N/A
O	390-085	N/A
P	7462	N/A
Q	330-285	N/A
R	505-025	N/A

*Finition déterminée par le Suffixe

Finition	Description
BC	Chrome brossé
BG	Or brossé
C	Chrome
SS	Acier inoxydable

For warranty or additional information, contact:

U.S.A.
houseofrohl.com/support
1-800-777-9762

QUEBEC / MARITIMES / WESTERN CANADA
QUÉBEC / MARITIMES / OUEST CANADIEN
QUEBEC / MARITIMOS / CANADA OCCIDENTAL
houseofrohl.ca/support
1-866-473-8442

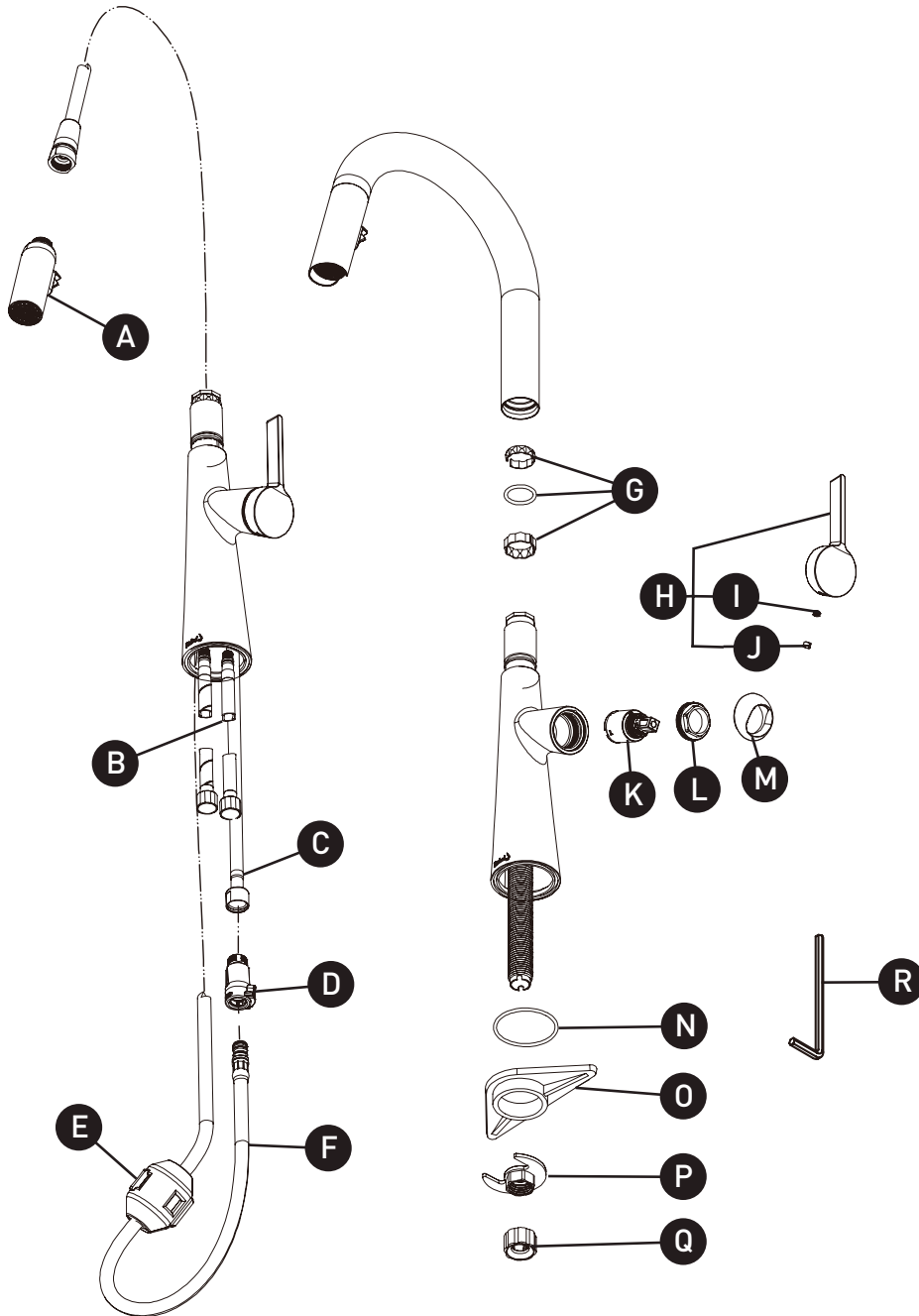
ONTARIO
houseofrohl.ca/support
1-800-287-5354

PEDIR POR NÚMERO DE REFERENCIA

PIEZAS ILUSTRADAS

LK101

Grifo de cocina extraíble Ludik™



ID	Referencia del kit	Acabado
A	4381	N/A
B	7108 (2x)	N/A
C	7128	N/A
D	S7-443 (1.8gpm / 6.8l/min)	N/A
	S7-443-15 (1.5gpm / 5.7l/min)	N/A
	S7-443-10 (1.0 gpm / 3.8l/min)	N/A
E	9528	N/A
F	7200	N/A
G	7489	N/A
H*	1894	Ver más abajo
I	152-040	N/A
J*	003-030	Ver más abajo
K	S401-039	N/A
L	305-337	N/A
M	052-073	Ver más abajo
N	225-460	N/A
O	390-085	N/A
P	7462	N/A
Q	330-285	N/A
R	505-025	N/A

*Acabado determinado por el sufijo

Acabado	Descripción
BC	Cromo cepillado
BG	Oro cepillado
C	Cromo
SS	Acero inoxidable

For warranty or additional information, contact:

U.S.A.
houseofrohl.com/support
1-800-777-9762

QUEBEC / MARITIMES / WESTERN CANADA
QUÉBEC / MARITIMES / OUEST CANADIEN
QUEBEC / MARITIMOS / CANADA OCCIDENTAL
houseofrohl.ca/support
1-866-473-8442

ONTARIO
houseofrohl.ca/support
1-800-287-5354