

FINAL ASSEMBLY

NOTE: External plumbing configuration will vary depending on the location of basin, location of main stack and available space.

Place the basin assembly in its final position and complete plumbing. Secure all connections shown in Figure 1.

Attach check valve to the discharge pipe above cover.

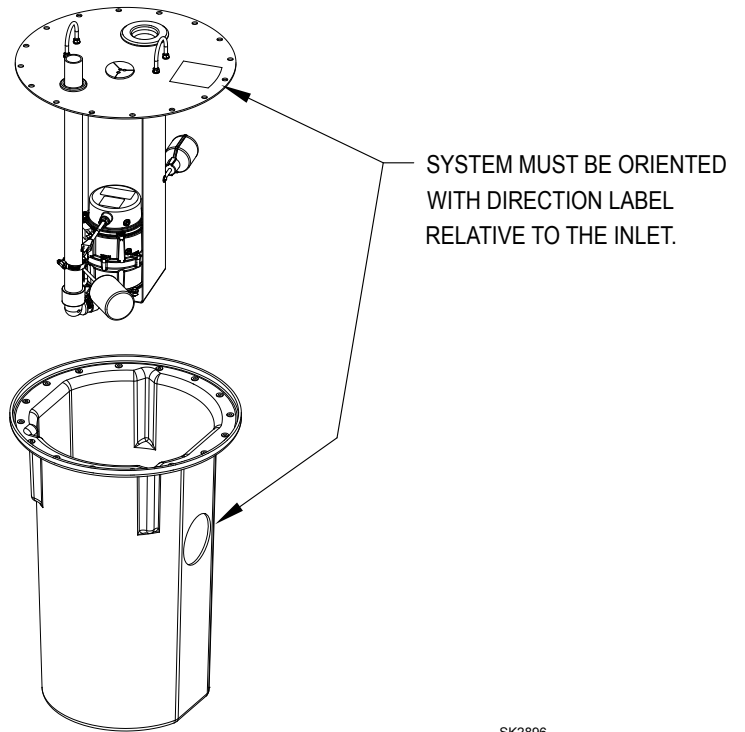
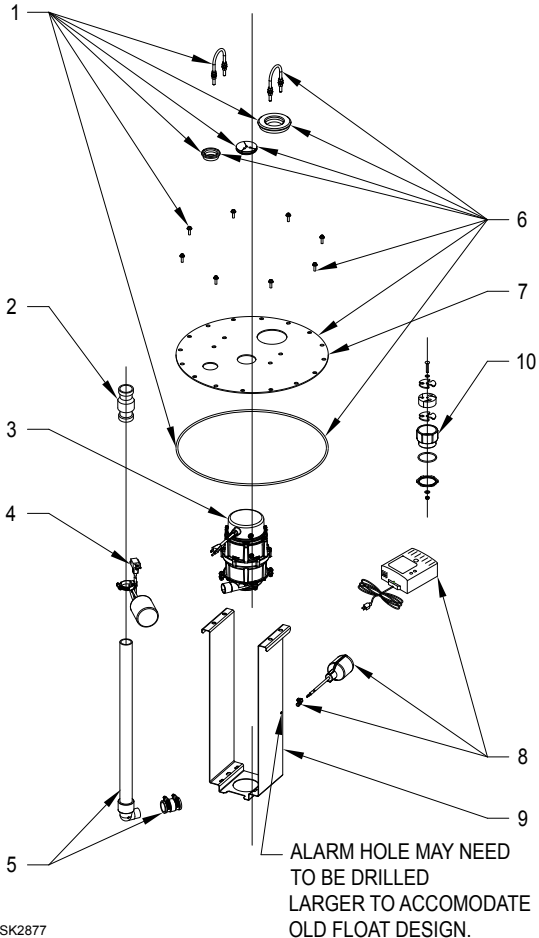


Figure 1

SK2896

ILLUSTRATED PARTS BREAKDOWN



SK2877

		MODEL :		
		915-A	915-B	
ITEM	DESCRIPTION	QTY	8/11 thru 11/11	12/11 thru Current
1	HARDWARE KIT - STD/10' (3 m) STACK	1	151846	151939
2	CHECK VALVE - SHIPPED LOOSE FOR FIELD INSTALLATION	1	30-0237	30-0239
3	801 PUMP	1	151692	151692
4	PIGGYBACK FLOAT	1	151847	151847
5	PIPE ASSEMBLY	1	151848	151940
6	BASIN COVER AND HARDWARE KIT - STD	1	151849	151941
	BASIN COVER AND HARDWARE KIT - 10' (3 m) STACK		N/A	151951
7	BASIN COVER - STD	1	17-0804	17-0828
	BASIN COVER - 10' (3 m) STACK		N/A	17-0830
8	ALARM	1	151850	151850
9	BRACKET - 24" (61 cm) DEEP BASIN	1	151760	151760
	BRACKET - 30" (76 cm) DEEP BASIN		150849	150849
10	10' (3 m) CORD SEAL ASM	1	151891	151891