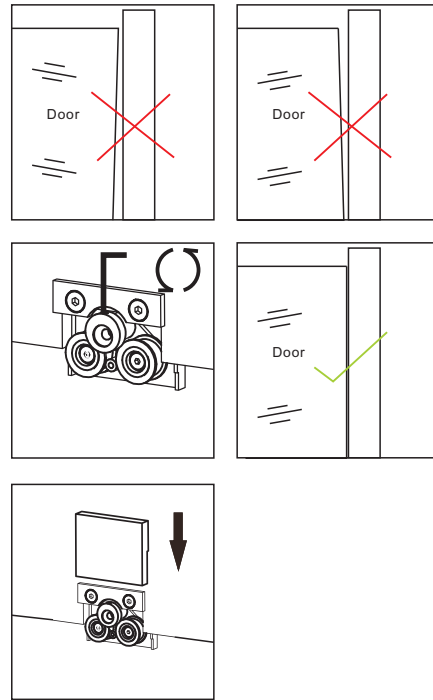
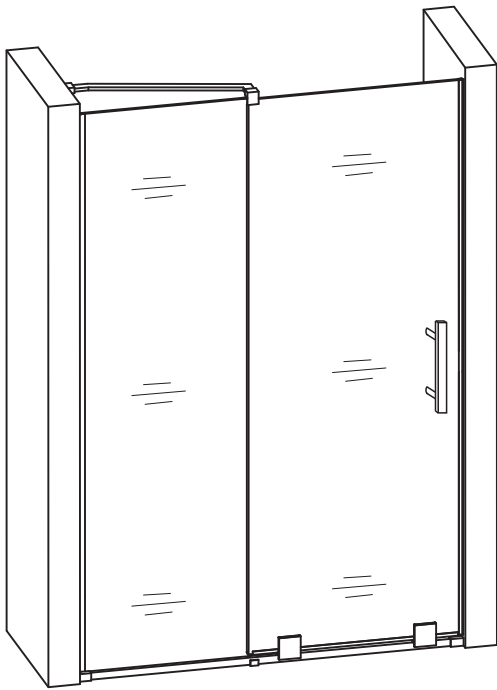


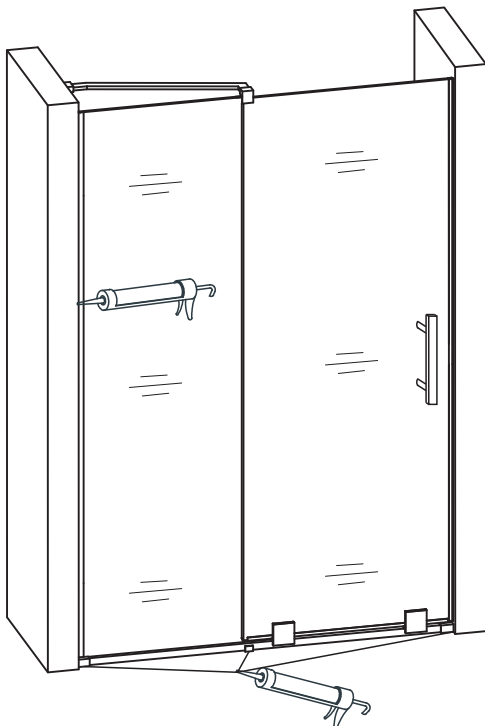
Step 10

10. If the sliding glass cannot be vertical to bottom, you can adjust the bottom pulley as shown in the picture, then put the decorative cover on the pulley as shown in the picture.



Step 11

After the installation, adhesive sealant on the outside of the product as shown, and it can only be used after 24 hours adhesive .



The sealant should be applied to the outside edge.



Allow 24 hours for silicone to **dry** before use.