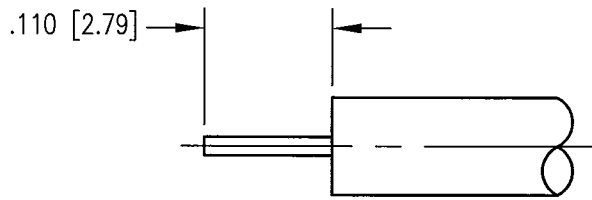
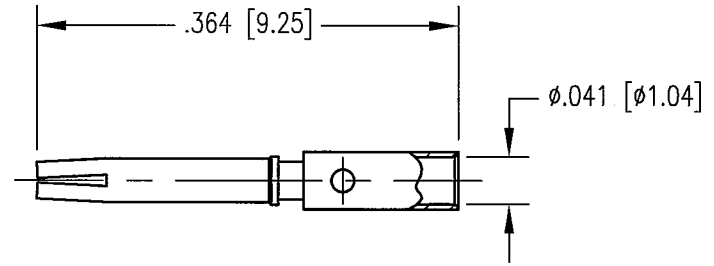
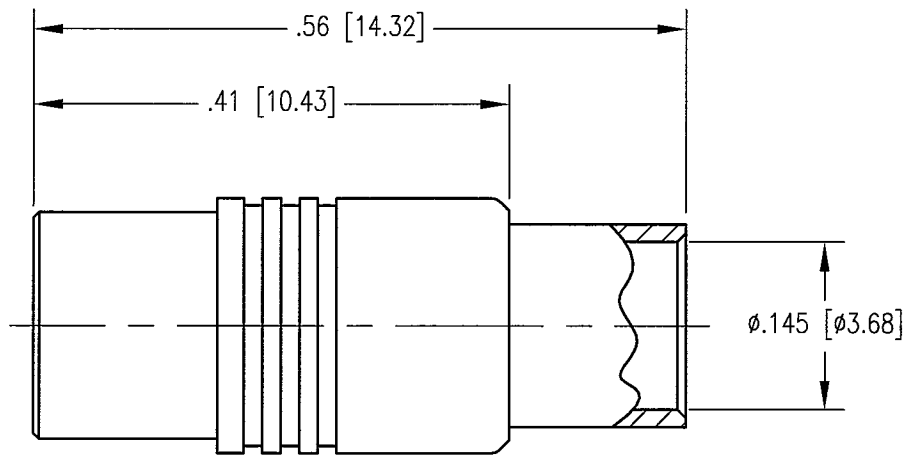


DWG. NO.		451-500-1410H	
REV	DESCRIPTION	BY DATE	APPD
A	RELEASE PER ECR 7416	JWH 7/22/02	[Signature]



CABLE TRIMMING DIMENSIONS

NOTES:

- MATERIALS:  
 BODY: BRASS PER ASTM B16  
 CONTACT: COPPER ALLOY  
 INSULATOR: TEFLON PER ASTM D1710
- FINISH:  
 BODY: .000015 MIN. GOLD PER MIL-G-45204 OVER  
 .000050 MIN. NICKEL PER QQ-N-290  
 CONTACT: .000030 MIN. GOLD PER MIL-G-45204 OVER  
 .000050 MIN. NICKEL PER QQ-N-290
- FOR USE WITH .141 DIA. SEMI-RIGID CABLE OR EQUIVALENT.
- FOR CABLING PROCEDURE USE CAP 5-11 WITH TRIMMING DIMENSIONS SHOWN.

PER ASME Y14.5M-1994 UNLESS OTHERWISE SPECIFIED: DIMENSIONS ARE IN INCHES (MM)		<b>NORTHROP GRUMMAN</b> Winchester Electronics 400 Park Road Watertown, CT 06795	
TOLERANCES: DECIMALS .XX ± .01 [0.254] .XXX ± .005 [0.127] ANGLES ± 2°		SCALE: 6:1	
<b>CUSTOMER DRAWING</b>		TITLE <b>MCX STRAIGHT JACK</b>	
DRAWN JWH	DATE 7/22/02	PREPARED [Signature]	DATE 7/25/02
APPROVED [Signature]	DATE 7/25/02	APPROVED [Signature]	DATE 7/25/02
A		451-500-1410H	SHL OF REV. 1 1 A