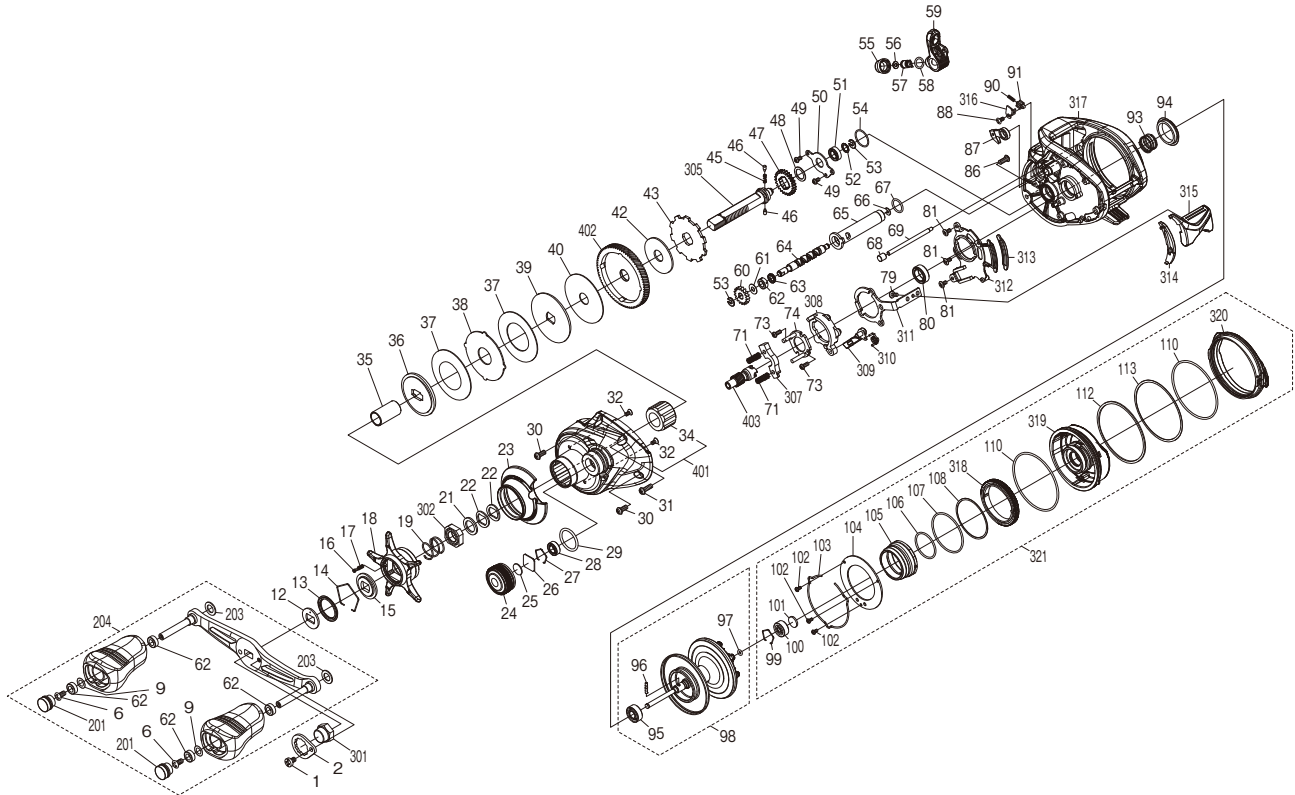


SHIMANO

TRAX

TRX301B



(51RL812A21X)

#	Part No.	BNT No.	Description	#	Part No.	BNT No.	Description	#	Part No.	BNT No.	Description
1	13NXD		Screw	50	145S6		Drive Shaft Retainer	100	105C2	5523	Ball Bearing
2	13VAD		Handle Nut Plate	51	105BP	4194	Ball Bearing	101	10EX5	5346	Spacer
6	103E9	4116	Screw	52	10C47	2144	Washer	102	10E7R	6160	Screw
9	104FH	6555	Washer	53	105NK	7199	E Lock	103	145S0		Cam Lever Retainer
12	10QVN	5475	Drive Shaft Shield	54	10LA8	4981	O Ring	104	147J3		Brake Dial Retainer Plate
13	10QVP	5532	Star Drag Seal	55	10FJB	4874	Pawl Cap	105	148DF		Brake Ring Gear Assembly
14	10KXW	5314	Click Plate Retainer	56	10CFU	6701	Spacer	106	146GJ		O Ring
15	10J26	5860	Star Drag Click Plate	57	10BHQ	5383	Line Guide Pawl	107	10MLU		O Ring
16	10MFC	5316	Click Pin	58	108WQ	4729	O Ring	108	146HL		Washer
17	10BT2	2123	Click Spring	59	10R7V	5497	Line Guide Assembly	110	145SP		O Ring
18	147HY		Star Drag	60	1024Q	5499	Idle Gear	112	146HN		Washer
19	10A70	4124	Star Drag Spring	61	10FJZ	4588	Washer	113	146HP		Washer
21	10J1P	6450	Star Drag Spacer	62	10PXZ	5334	Bushing	201	147JH		Handle Knob Seal
22	109F5	5376	Drag Spring Washer	63	1024R	5500	Worm Shaft Seal	203	148SM		Washer
23	145RX		Clutch Button Attachment	64	146AP		Worm Shaft	204	147JD		Handle Assembly
24	147HZ		Cast Control Cap	65	145SF		Level Wind Guard	301	10R3C	5531	Handle Nut
25	10896	1696	Cast Control Spacer	66	105NC	1672	E Lock	302	10R3H	7373	Star Drag Nut
26	148DJ		Cast Control Spacer	67	101GT	5503	O Ring	305	146J9		Drive Shaft
27	148DK		Retainer	68	14694		Stabilizer Bar Retainer	307	1046Y	5005	Yoke
28	105BR	4945	Ball Bearing	69	145S1		Stabilizer Bar	308	10225	5541	Clutch Cam
29	108WK	2429	O Ring	71	104BC	5201	Yoke Spring	309	1021U	5542	Clutch Pawl
30	10LZB		Screw	73	10LVJ	5505	Screw	310	1021T	5543	Clutch Pawl Spring
31	148SS		Screw	74	10QVM	5506	Clutch Cam Retainer	311	1021Z	5544	Clutch Plate
32	10LA3	6714	Screw	79	10LCL	5511	Screw	312	10227	5545	Clutch Guard
34	10F37	4447	Roller Clutch Bearing	80	105BT	5858	Ball Bearing	313	1021Y	5547	Clutch Button Seal
35	145RZ		Roller Clutch Inner Tube	81	105UT	6711	Screw	314	146J8		Clutch Bar Guide
36	145SX		Key Washer	86	10U0T	6712	Screw	315	1021W	5549	Clutch Lever
37	145S8		Drag Washer	87	10MW2	3705	Anti-reverse Pawl	316	1021X	5550	Retention Spring Retainer
38	145SH		Eared Washer	88	10LCT	5609	Screw	317	148SF		Frame Assembly
39	145SW		Key Washer	90	101J6	5518	Clutch Retention Spring	318	147BQ		Brake Dial
40	1024D	5487	Drag Washer	91	10TZC	5519	Clutch Retention Pin	319	148SG		Dial Case Assembly
42	1025A	5492	Drag Washer	93	10EZE	5211	Bearing Pressure Spring	320	147HQ		B Side Plate Cam Lever
43	145SG		Anti-reverse Ratchet	94	1024L	5521	Frame Center Seal	321	148SH		B Side Plate Assembly
45	10JDZ	5027	Idle Gear Spring	95	105CA	5765	Ball Bearing	401	148SJ		A Side Plate Assembly
46	10HJG	5310	Idle Gear Pin	96	10MD1	5766	Spool Clutch Pin	402	147JA		Drive Gear
47	10J47	4872	Idle Gear	97	10EZ7	5218	O Ring	403	147J9		Pinion Gear
48	10G6D	5715	Washer	98	148SK		Spool Assembly				
49	10S3Y	5756	Screw	99	1054D	5319	Bearing Retainer				

Please note that the number of adjusting washers may not be the same as shown in the exploded views.
(Adjustment will vary with each individual product.)

(240710)_003