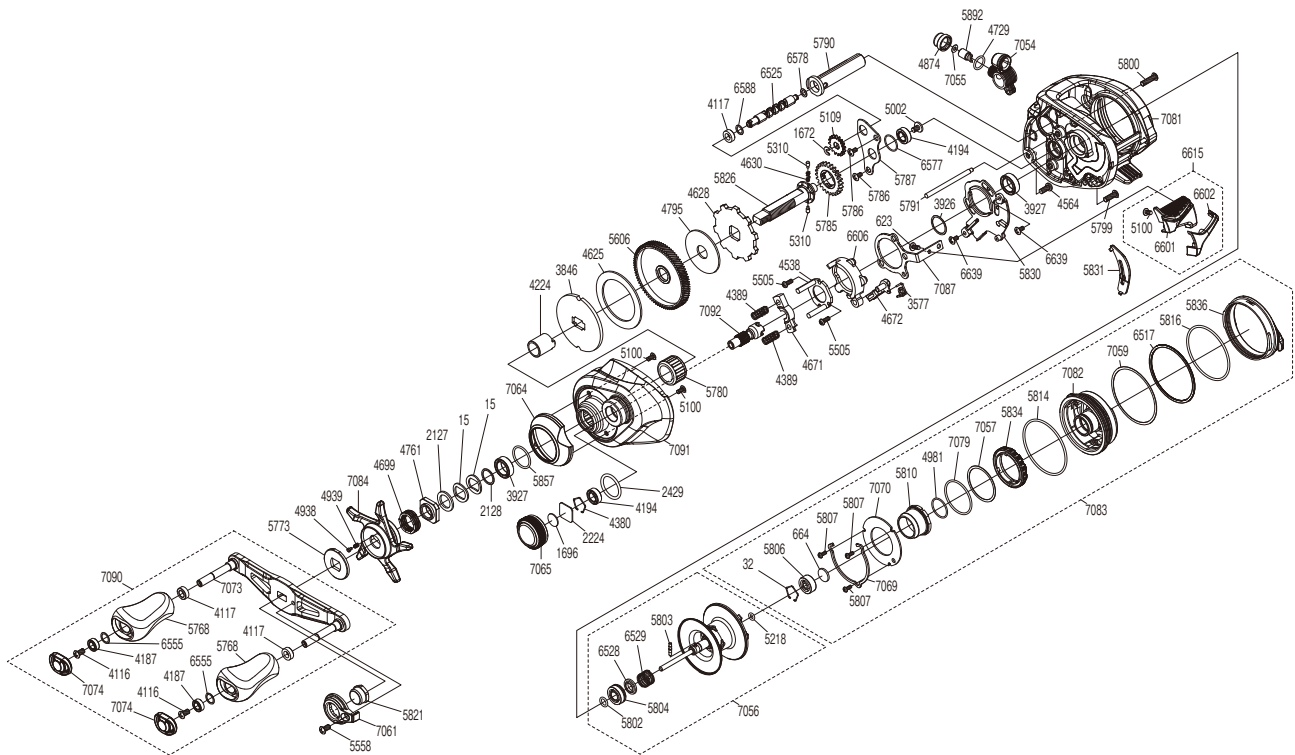


# SHIMANO

## Bantam

## 22BTMXL



(51RL506A41X)

#	Part No.	Description	#	Part No.	Description	#	Part No.	Description
0015	10D60	Drag Spring Washer	5002	10PVU	Screw	6528	10SWZ	Bushing
0032	10GEW	Bearing Retainer	5100	1055J	Screw	6529	10SJF	Bearing Pressure Spring
0623	103C0	Screw	5109	10FNX	Idle Gear	6555	104FH	Washer
0664	1057S	Spacer B	5218	10EZ7	O Ring	6577	10SZ4	O Ring
1672	105NC	E Lock	5310	10HJG	Idle Gear Pin	6578	10GFG	Washer
1696	10896	Cast Control Spacer	5505	10LVJ	Screw	6588	100T8	Washer
2127	10J1N	Star Drag Spacer	5558	10R1Q	Screw	6601	10RW1	Clutch Button
2128	105PW	Bearing Washer	5606	1021S	Drive Gear	6602	10RWB	Clutch Button Cover
2224	1085F	Cast Control Spacer	5768	10EBH	Handle Knob	6606	10SKS	Clutch Cam
2429	108WK	O Ring	5773	1007F	Star Drag Click Plate	6615	100P2	Clutch Button Assembly
3577	10N1V	Clutch Pawl Spring	5780	1005E	Roller Clutch Bearing	6639	100BD	Screw
3846	10D3N	Pressure Plate	5785	10057	Idle Gear	7054	101PW	Line Guide Pawl Holder Assembly
3926	10G8C	Washer	5786	10MT4	Screw	7055	10T9Y	Washer
3927	10EX8	Ball Bearing	5787	1005S	Drive Shaft Retainer	7056	101PX	Spool Assembly(With Bearing)
4116	103E9	Screw	5790	1005Z	Level Wind Guard	7057	10T9R	Washer
4117	10PXY	Bushing	5791	1006J	Level Wind Guide	7059	10E72	Washer
4187	104VX	Ball Bearing	5799	101GQ	Screw	7061	10S80	Handle Nut Plate
4194	105BP	Ball Bearing	5800	103LN	Screw	7064	100PU	Clutch Button Attachment
4224	10BN3	Roller Clutch Inner Tube	5802	10TNF	O Ring	7065	10TA3	Cast Control Cap
4380	1057X	Retainer	5803	10MD0	Spool Clutch Pin	7069	10TUC	Cam Lever Retainer
4389	104BU	Yoke Spring	5804	1005D	Ball Bearing	7070	10RDM	Br Dial Retainer Plate
4538	10F42	Clutch Cam Retainer	5806	10S37	Ball Bearing	7073	10E11	Handle Shank Assembly
4564	10LZD	Screw	5807	1026U	Screw	7074	1005A	Handle Knob Seal
4625	106XT	Drag Washer	5810	10TB6	Brake Pipe Gear Assembly	7079	10CG0	O Ring
4628	10D6Y	Anti-Reverse Ratchet	5814	108WZ	O Ring	7081	10S1R	Frame Assembly
4630	10JDX	Idle Gear Spring	5816	1006P	O Ring	7082	10S1U	Dial Case Assembly
4671	1046U	Yoke	5821	100G5	Handle Nut	7083	10S1S	Right Side Plate Assembly
4672	105ZV	Clutch Pawl	5826	1007B	Drive Shaft	7084	100JV	Star Drag
4699	10A71	Star Drag Spring	5830	10062	Clutch Guard	7087	100JW	Clutch Plate
4729	108WQ	O Ring	5831	1007C	Clutch Bar Guide	7090	10S2V	Handle Assembly
4761	10A0C	Star Drag Nut	5834	10055	Br Dial	7091	10TRU	Left Side Plate
4795	10CJ1	Drag Washer	5836	1005T	Right Side Plate Cam Lever	7092	10T9E	Pinion Gear
4874	10FJB	Pawl Cap	5857	1027V	O Ring			
4938	10B27	Click Pin	5892	10211	Line Guide Pawl			
4939	10988	Click Spring	6517	10SKT	Washer			
4981	10LA8	O Ring	6525	10EET	Worm Shaft	4692	10LQ0	B-100 Oil (Accessory)

Please note that the number of adjusting washers may not be the same as shown in the exploded views.  
(Adjustment will vary with each individual product.)

(230904)\_004