

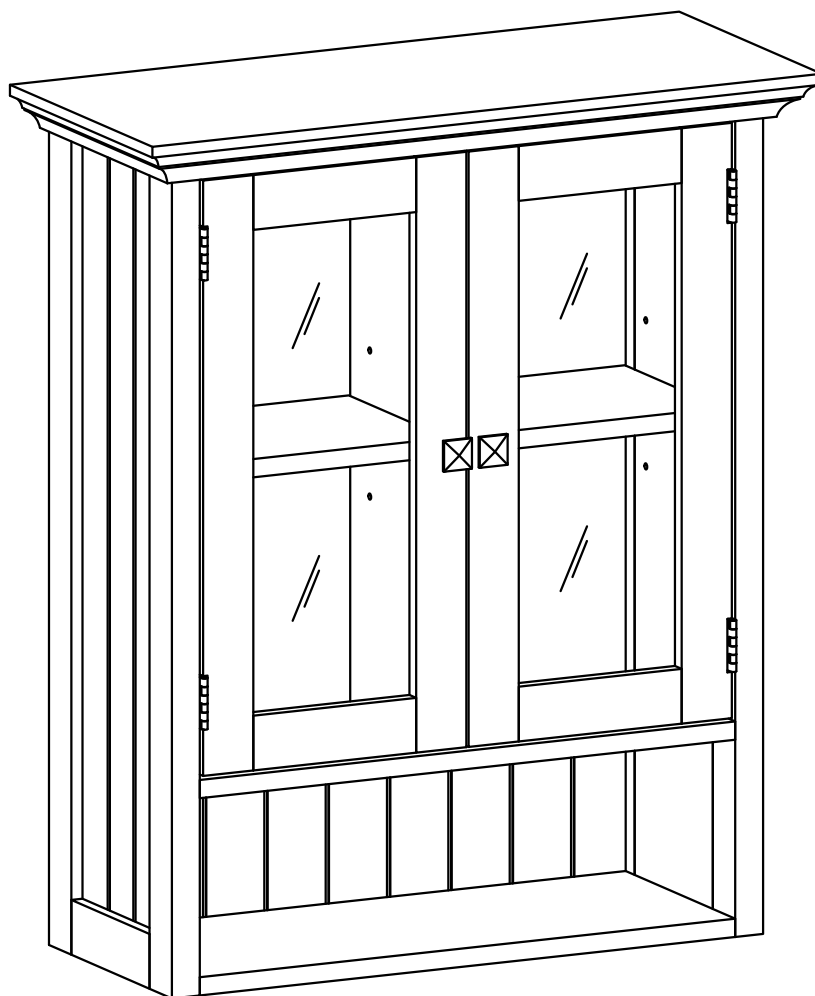
# SIMPLIHOME®

## Acadian / Normandy / Brunswick

---

### Double Door Wall Cabinet

Model # AXCBSACA04-WH



# SIMPLIHOME

## Great quality is a right.

Thank you for shopping with Simpli Home,  
America's top brand for high-value furniture.



## It's time to register your product warranty.

It's quick and easy. And you'll be happy you did.



- ✓ Activate your **1-year** warranty
- ✓ Automatic entry to win a **\$500** gift certificate
- ✓ Earn instant rewards and **save**

[simpli-home.com/product-registration](https://simpli-home.com/product-registration)

# SIMPLIHOME

## Review your product and collect rewards!

Thank you for your purchase! We hope you enjoy it. We'd love your feedback. Please share a review and get instant rewards!



*[simpli-home.com/product-review](https://simpli-home.com/product-review)*



## Share photos and get your cash back!



Send us images or share them on social and qualify for instant rewards. You may even receive store credit on your entire purchase!



*[simpli-home.com/share-images](https://simpli-home.com/share-images)*

# SIMPLIHOME®

## For Fastest Customer Service:



1. Open your phone's camera.
2. Point your phone's camera at the QR code to scan.
3. Click on the pop up.
4. You'll be taken to our customer service page.
5. Fill the form with your order information and issue.
6. Submit form.
7. A customer service associate will contact you.

### Other ways to contact us...



#### Email Us

customerservice@simpli-home.com



#### Visit Us

Visit our site directly at  
[www.simpli-home.com](http://www.simpli-home.com)



#### Call Us

1-866-518-0120  
Monday to Friday  
9am to 5pm EST

**\*If you've purchased from a retailer and you wish to return the product, please contact the retailer directly.**

**IMPORTANT** : Please read this manual carefully before beginning assembly of this product. Keep this manual for future reference.

## **Safety Information**

**This furniture is designed for indoor use.**

Identify all the parts and hardware. Do not discard of the packaging until you have checked that you have all of the parts and hardware required.  
Hardware package may have spare parts.

**WARNING:** This item contains small parts which can be swallowed by children and pets. Keep children and pets away during assembly. To avoid danger of suffocation, always keep plastic bags away from children and pets. We recommend that you assemble this unit on a carpeted floor to avoid scratches. If using power tools, set the tool to low torque to avoid damage.

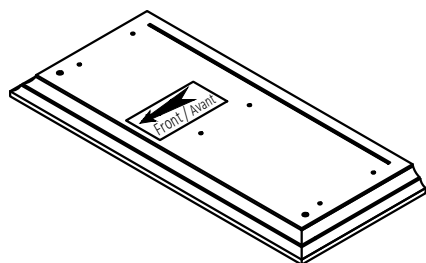
**May require 2 people for ease of assembly.**

## **Care & Maintenance**

To clean, use a soft or slightly damp cloth, then wipe with a clean, dry cloth.  
Dust with a soft dry cloth.  
Do not use ammonia-based cleaning products, as they will damage the finish.  
Do not leave liquids or damp cloths on this furniture.  
To avoid dulling of the finish, do not place this furniture in direct sunlight.  
Please inspect and tighten all screws or bolts on a regular basis to ensure proper performance and safety of your item.

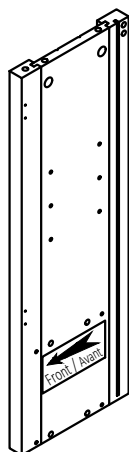
## Part Description

A



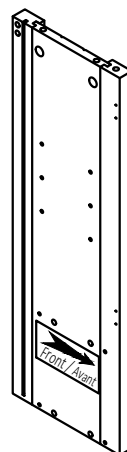
TOP  
QTY 1

BL



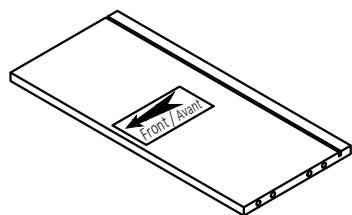
LEFT SIDE  
QTY 1

BR



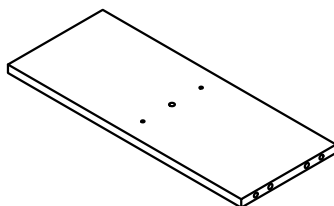
RIGHT SIDE  
QTY 1

C



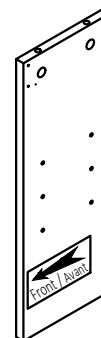
BOTTOM SHELF  
QTY 1

D



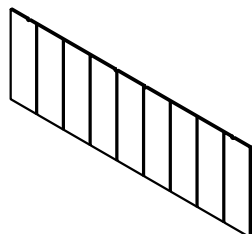
MIDDLE SHELF  
QTY 1

E



DIVIDER  
QTY 1

F



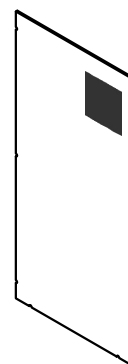
BOTTOM BACK PANEL  
QTY 1

FL



LEFT BACK PANEL  
QTY 1

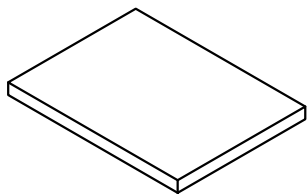
FR



RIGHT BACK PANEL  
QTY 1

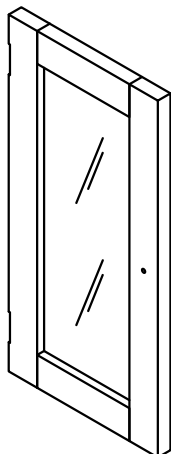
## Part Description

G



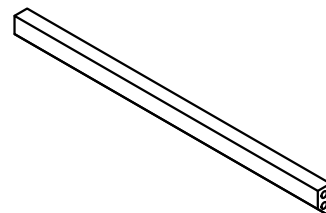
SHELF  
QTY 2

H



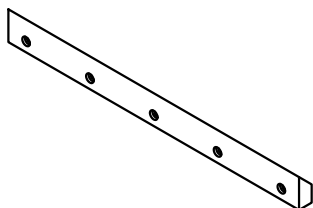
DOOR (L&R Same)  
QTY 2

I



BACK BAR  
QTY 1

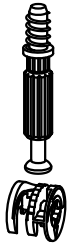
J



WALL MOUNT BAR  
QTY 1

## Hardware Description

1



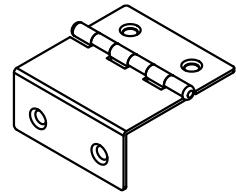
CAM LOCK PIN  
CAM LOCK  
QTY 14 SETS

2



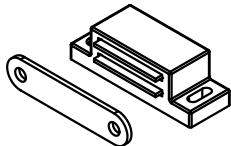
WOOD DOWEL  
Ø8 X 30mm  
QTY 15

3



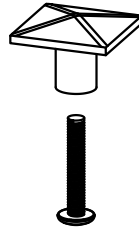
HINGE  
QTY 4

4



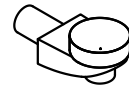
MAGNET AND PLATE  
QTY 2 SETS

5



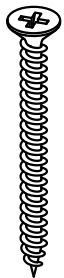
HANDLE  
M4 X 25 mm  
QTY 2 SETS

6



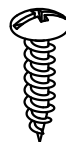
SHELF SUPPORT  
QTY 8

7



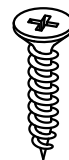
PHILLIPS SCREW  
M4 X 50mm  
QTY 7

8



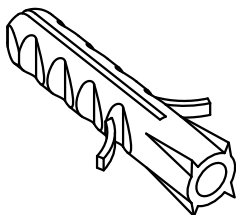
PHILLIPS SCREW ROUND HEAD  
M4 X 15mm  
QTY 7

9

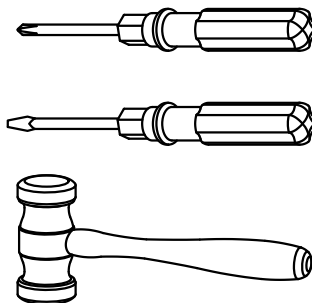


PHILLIPS SCREW  
M3 X 15mm  
QTY 24

10

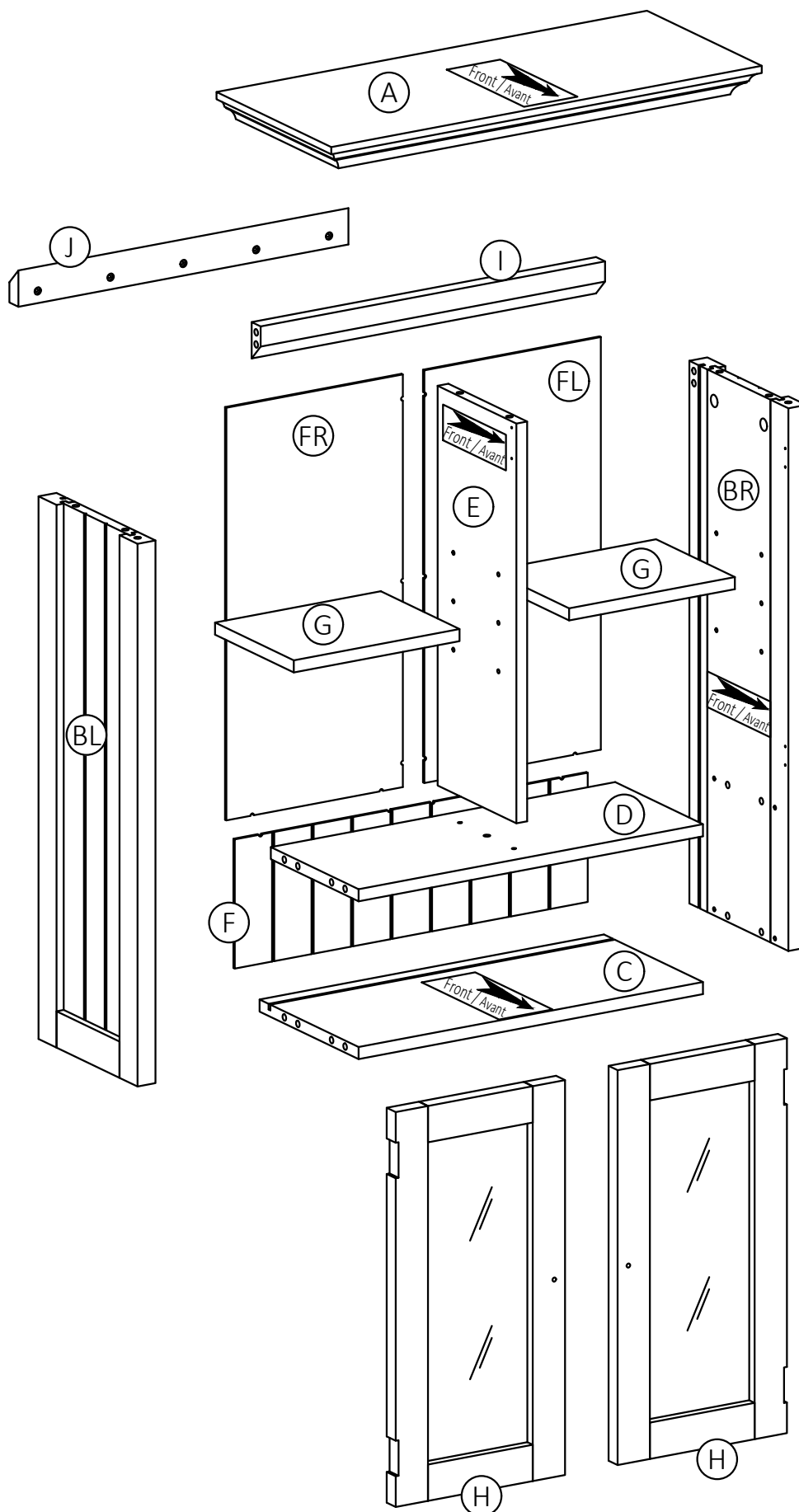


WALL ANCHOR  
QTY 4

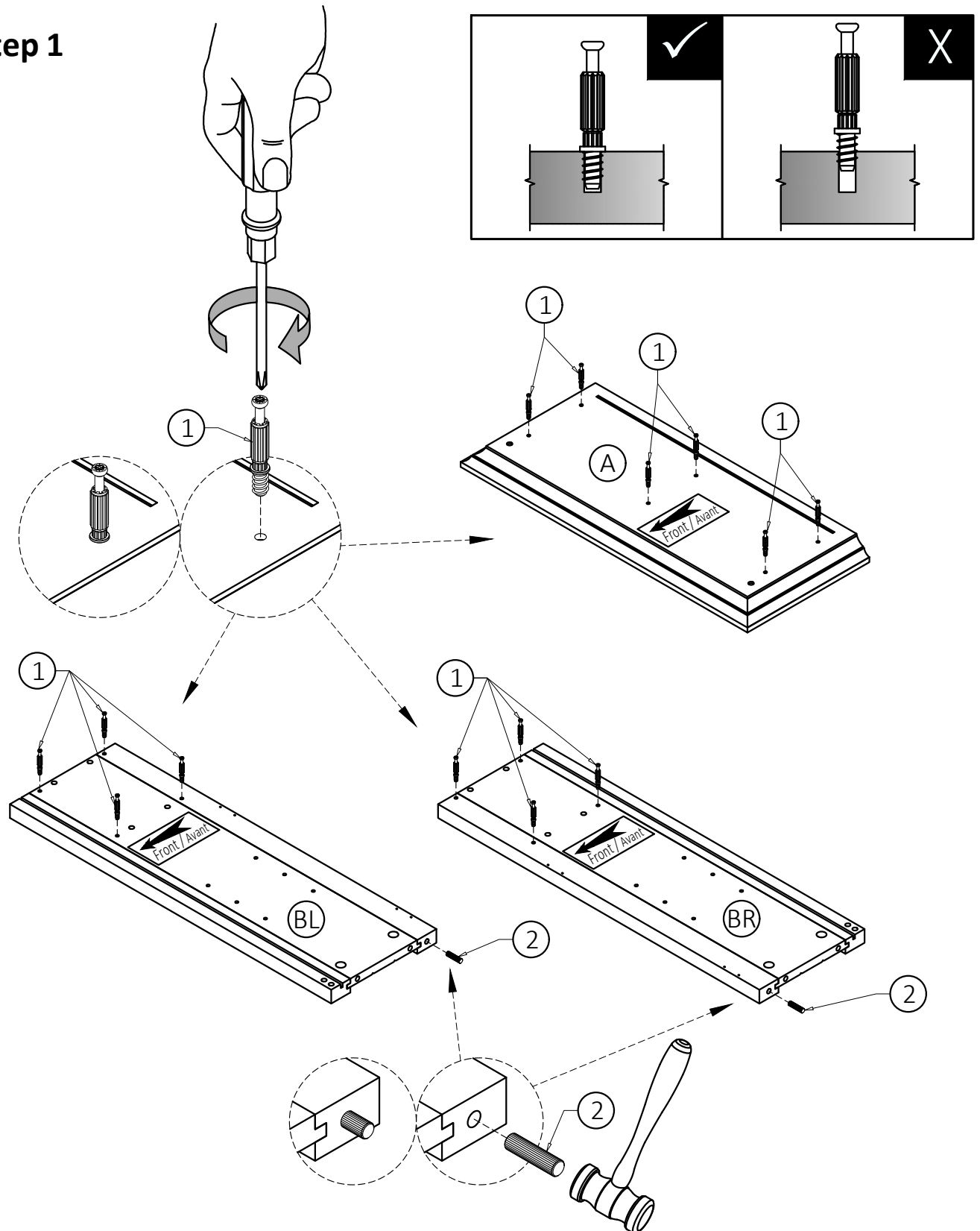


Required -  
Flathead screwdriver  
Phillips screwdriver  
Rubber mallet  
**Not Included**



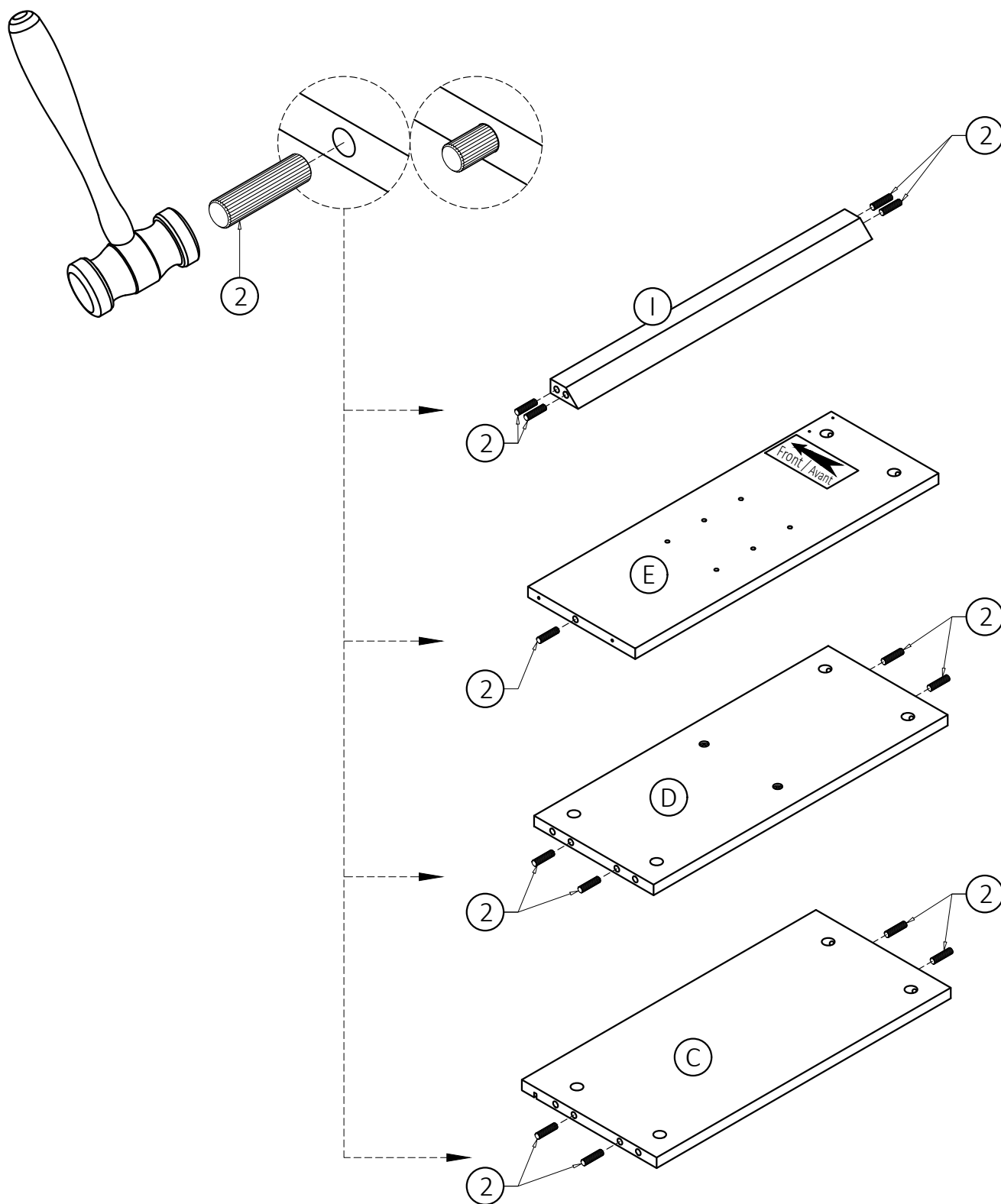


## Step 1



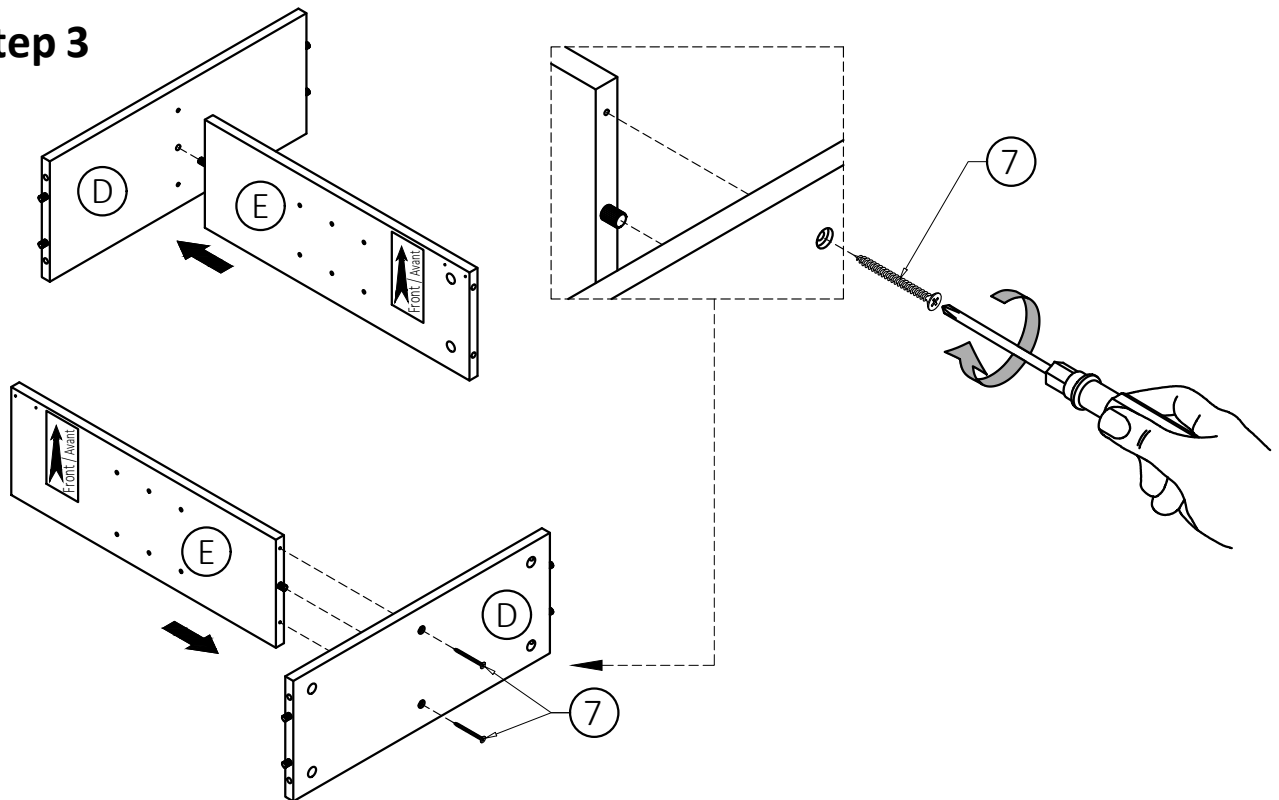
1. Attach Cam Lock Pins ① into pre-drilled holes on parts (A), (BL), (BR).
2. Use Phillips screwdriver to secure Cam Lock Pins. Do not over-tighten.
3. Insert one Dowel ② into guide holes on each Side (BL), (BR).
4. Use rubber mallet to tap Dowels ② into bottom of holes securely. 1/2 length of Dowels should be exposed.

## Step 2



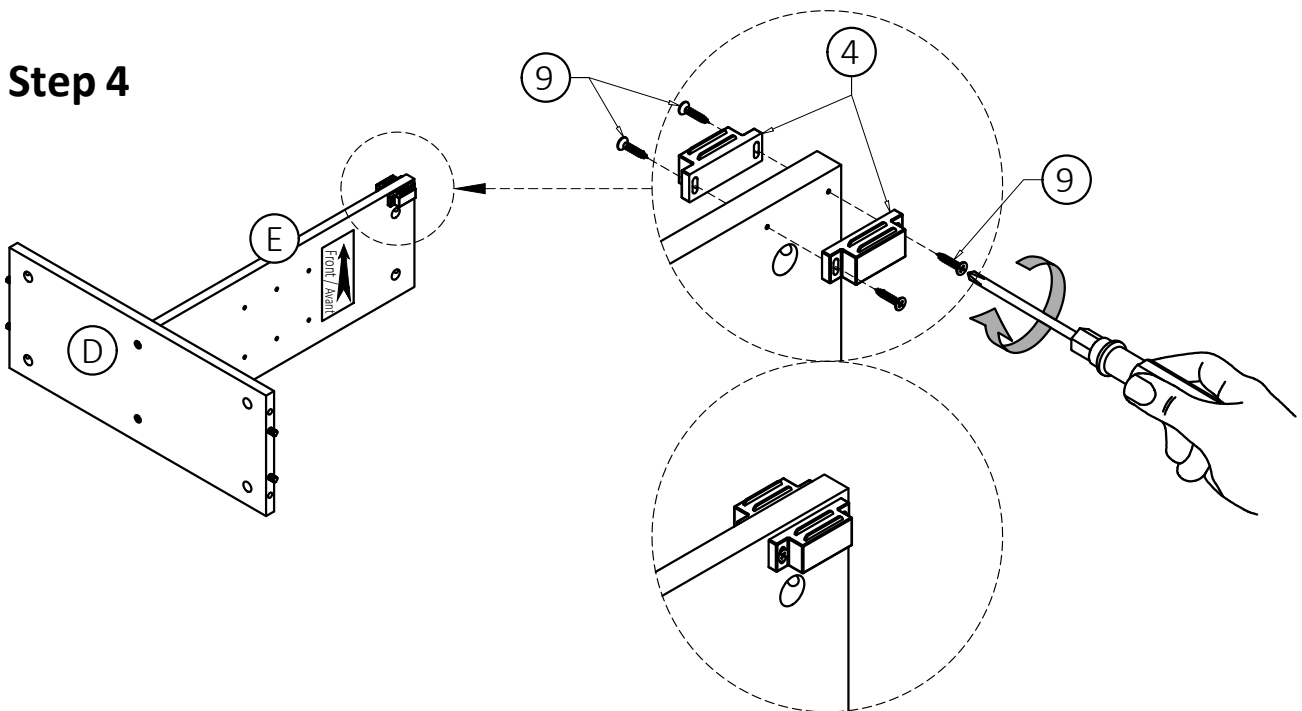
1. Insert Dowels (2) into guide holes on each part (C), (D), (E), (I).
2. Use rubber mallet to tap Dowels (2) into bottom of holes securely. 1/2 length of Dowels should be exposed.

## Step 3



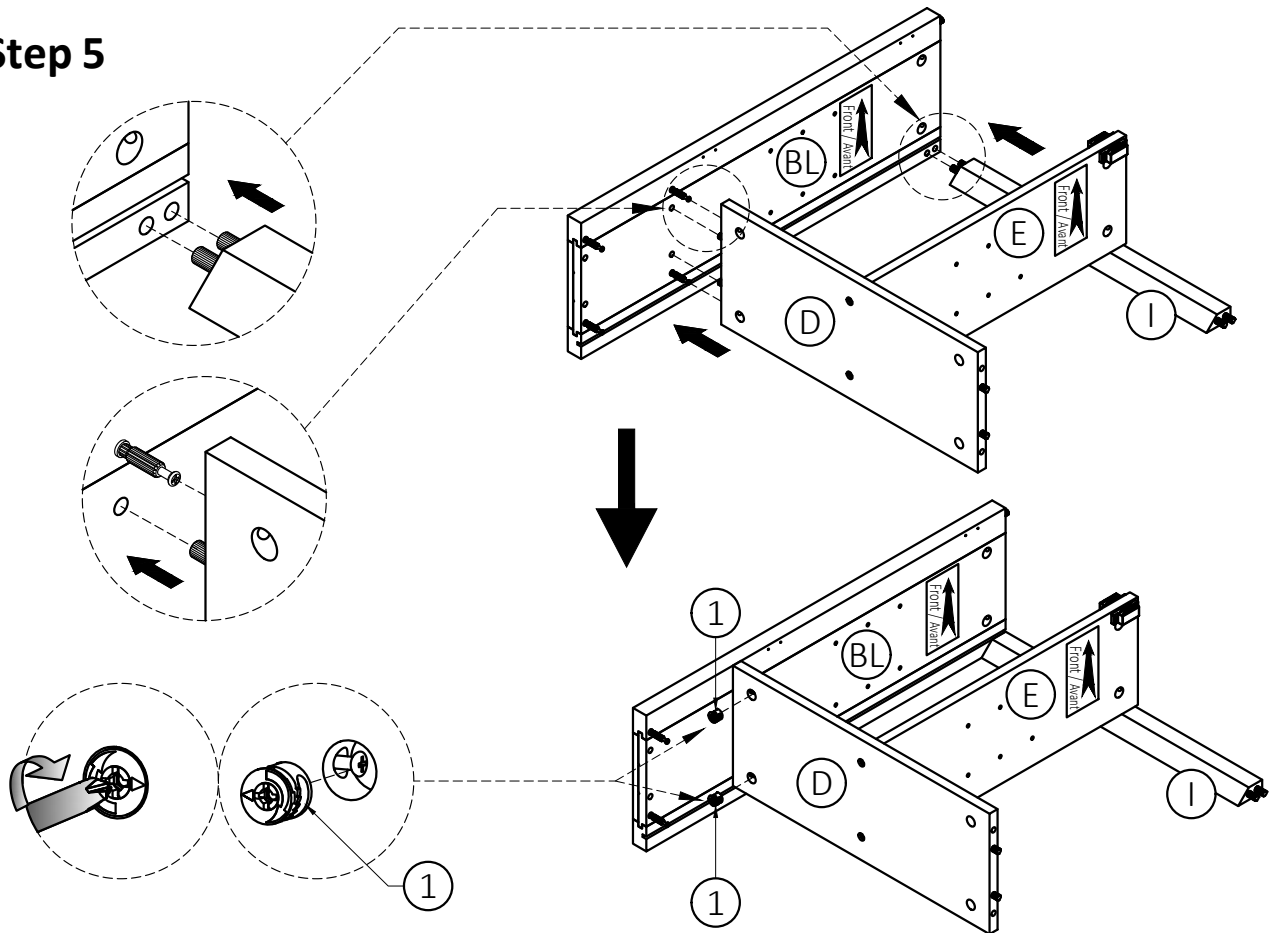
1. Align Wood Dowels with guide holes and attach Divider (E) to Middle Shelf (D).
2. Use two Phillips Screws (7) to attach Middle Shelf (D) through guide holes from Middle Shelf (D) to pre-drilled holes of Divider (E).
3. Use Phillips screwdriver to secure Screws. Do not over-tighten.

## Step 4



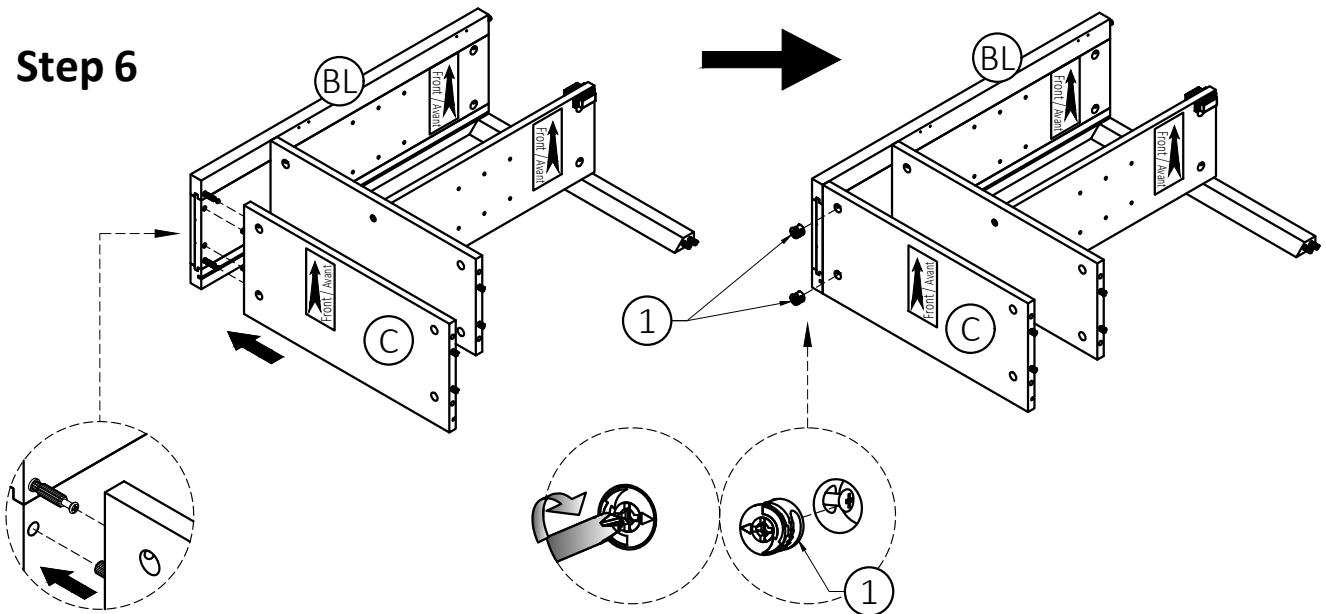
1. Attach Magnets (4) using Phillips Screws (9) into pre-drilled holes Divider (E).
2. Use Phillips screwdriver to secure screws. Do not over-tighten.

## Step 5



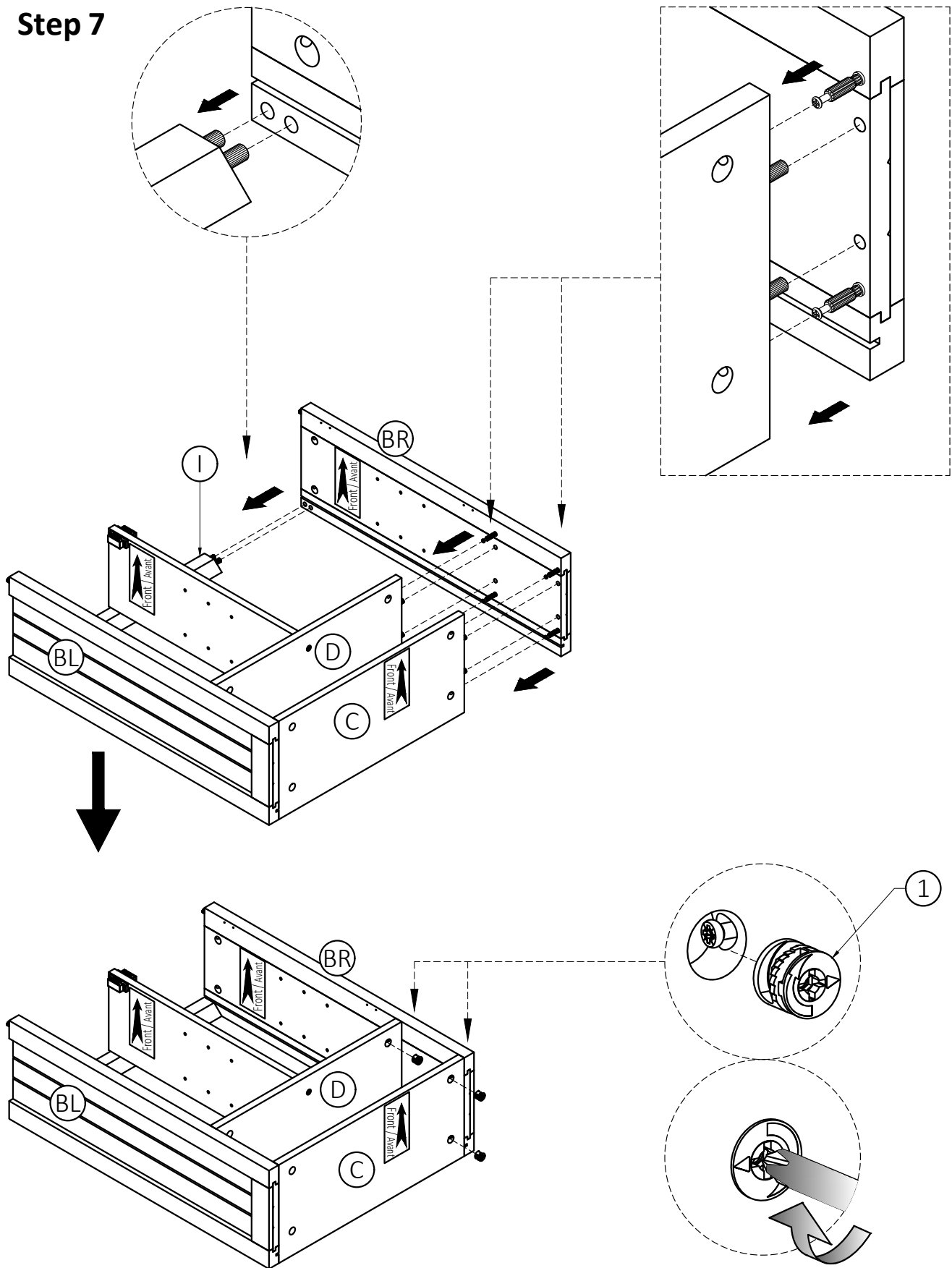
1. Align Wood Dowels and Cam Lock Pins with guide holes and attach parts (D), (I) to Left Side (BL).
2. Insert two Cam Locks (1) into guide holes on Middle Shelf (D).
3. Use Phillips screwdriver to secure Cam Locks.

## Step 6



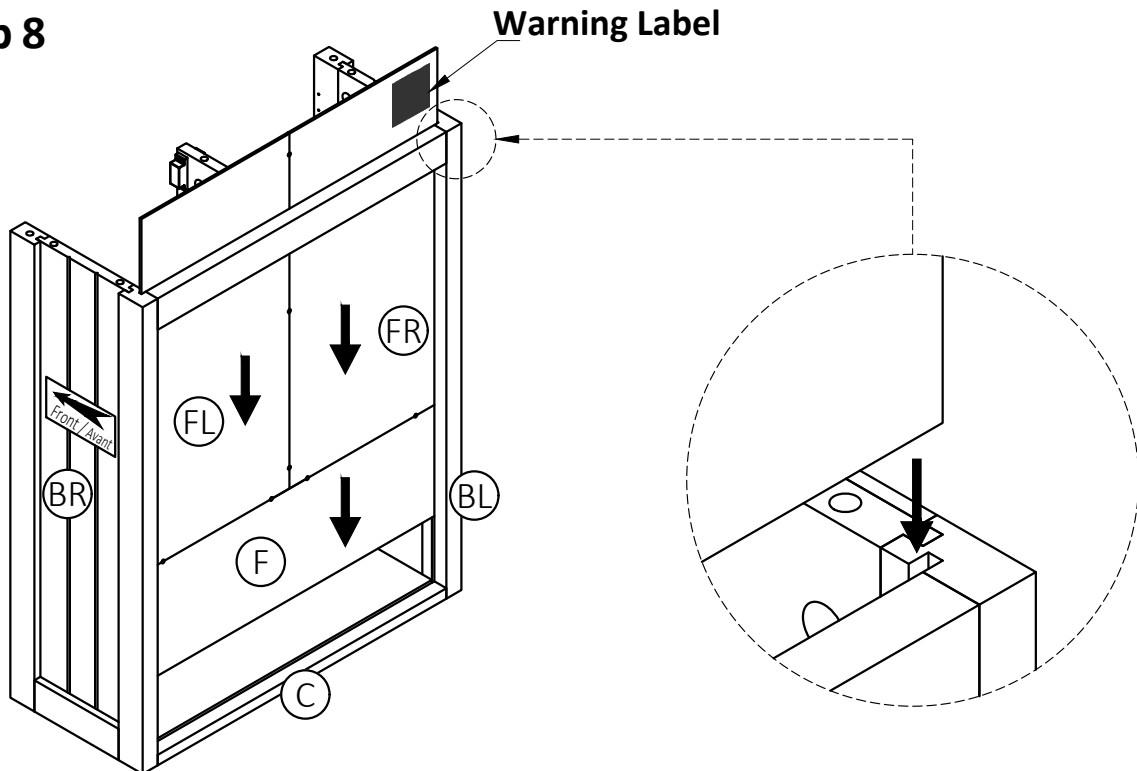
1. Align Wood Dowels and Cam Lock Pins with guide holes and attach part (C) to Left Side (BL).
2. Insert two Cam Locks (1) into guide holes on Bottom Shelf (C).
3. Use Phillips screwdriver to secure Cam Locks.

## Step 7



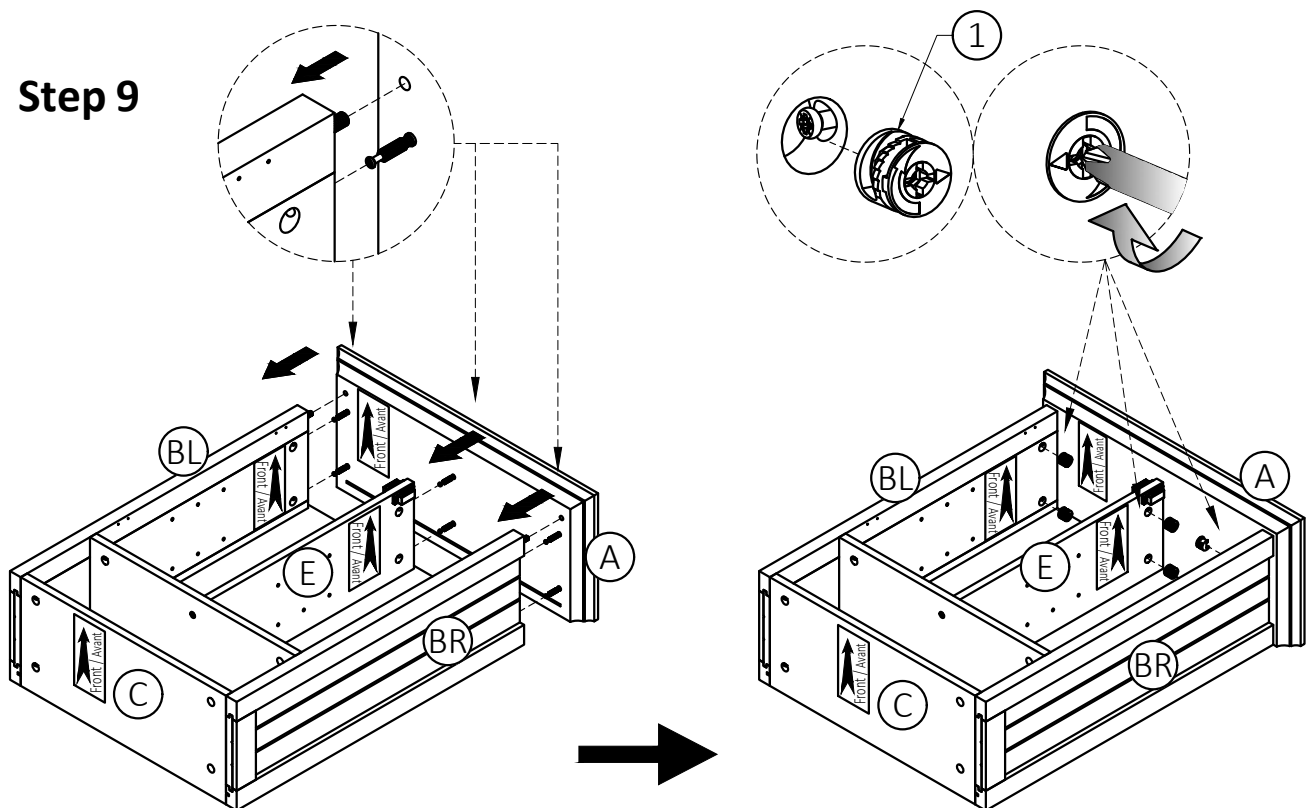
1. Repeat Step-5 and Step-6 for the Right Side (BR).

## Step 8



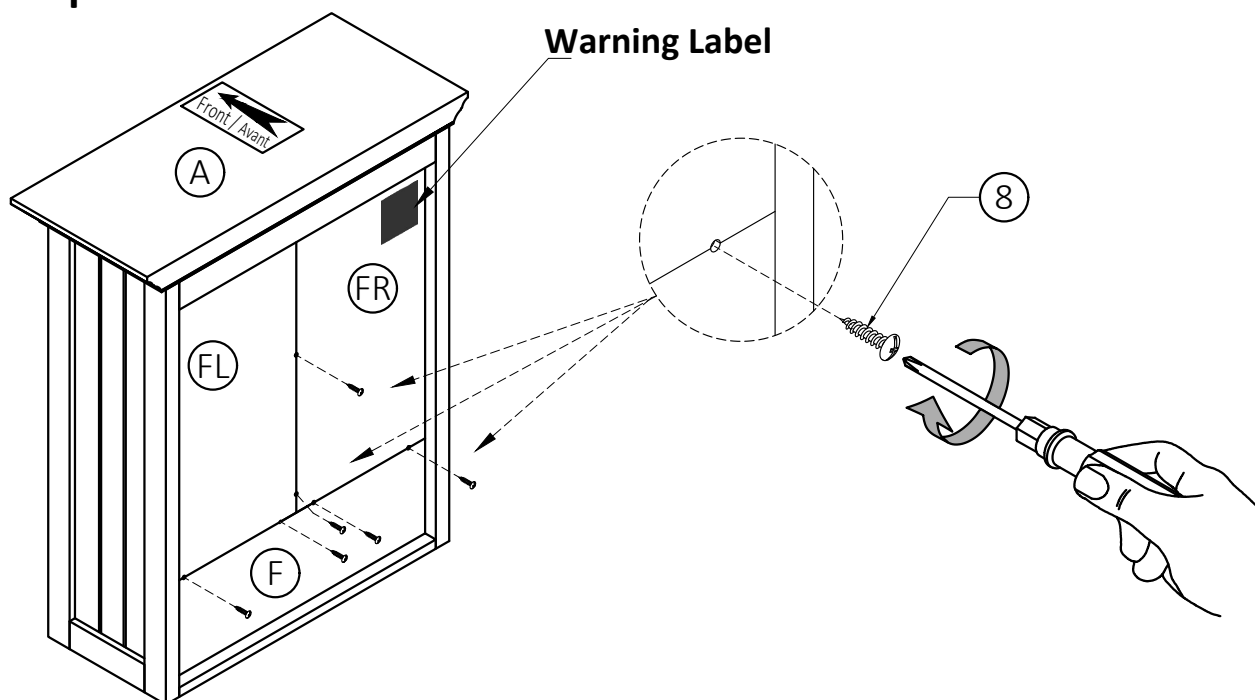
1. Slide Back Panels (F), (FL), (FR) firmly into slots on Sides (BL), (BR) and Bottom Shelf (C).

## Step 9



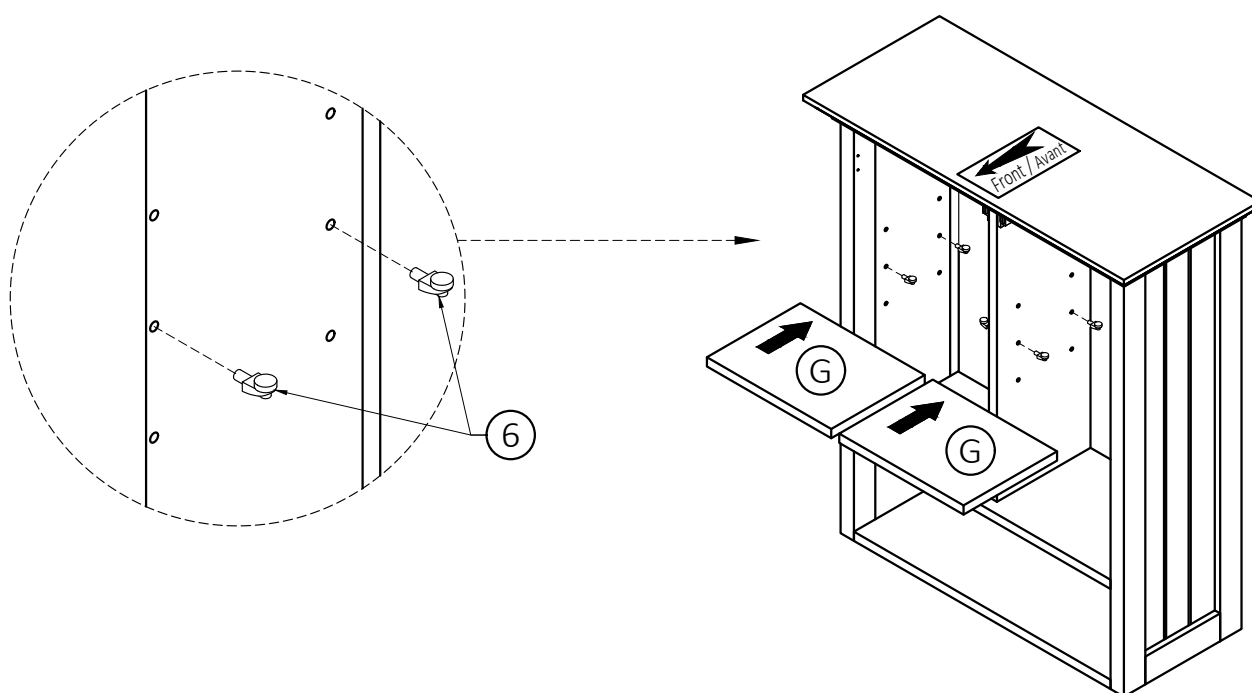
1. Align Wood Dowels and Cam Lock Pins with guide holes and attach Top (A) to parts (BL, BR, E).
2. Insert two Cam Locks (1) into guide holes on each parts (BL, BR, E).
3. Use Phillips screwdriver to secure Cam Locks.

## Step 10



1. Use Phillips Screws Round Head (8) to attach Back Panels (F), (FL), (FR) through guide holes.
2. Use Phillips screwdriver to secure Screws. Do not over-tighten.

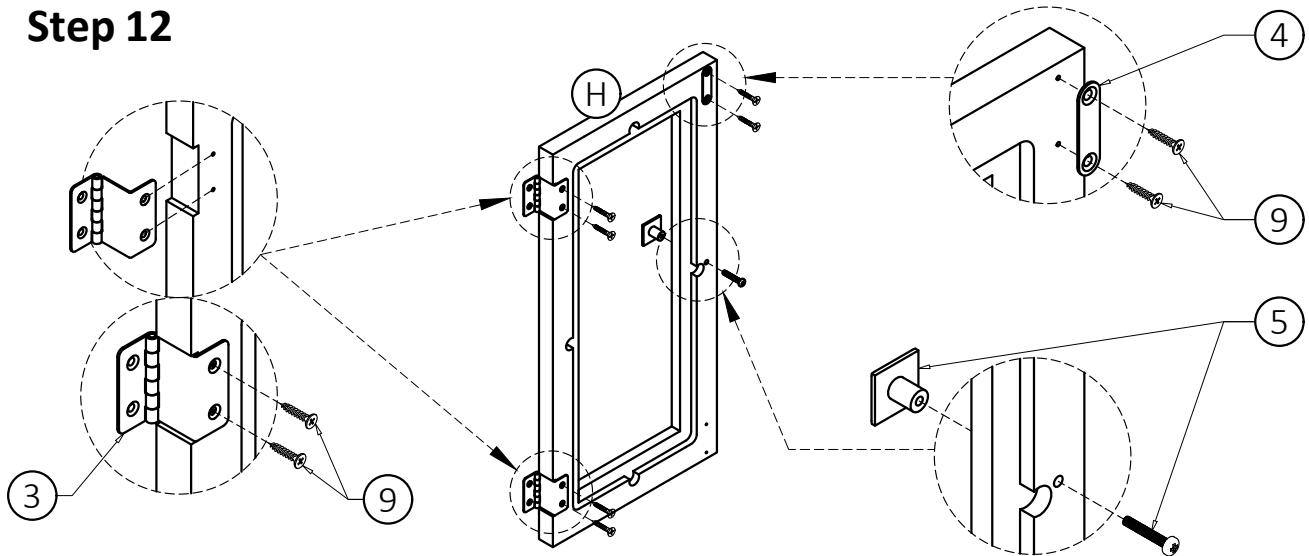
## Step 11



1. Use four Shelf Supports (6) for each Cabinet Shelf (G) in desired location .

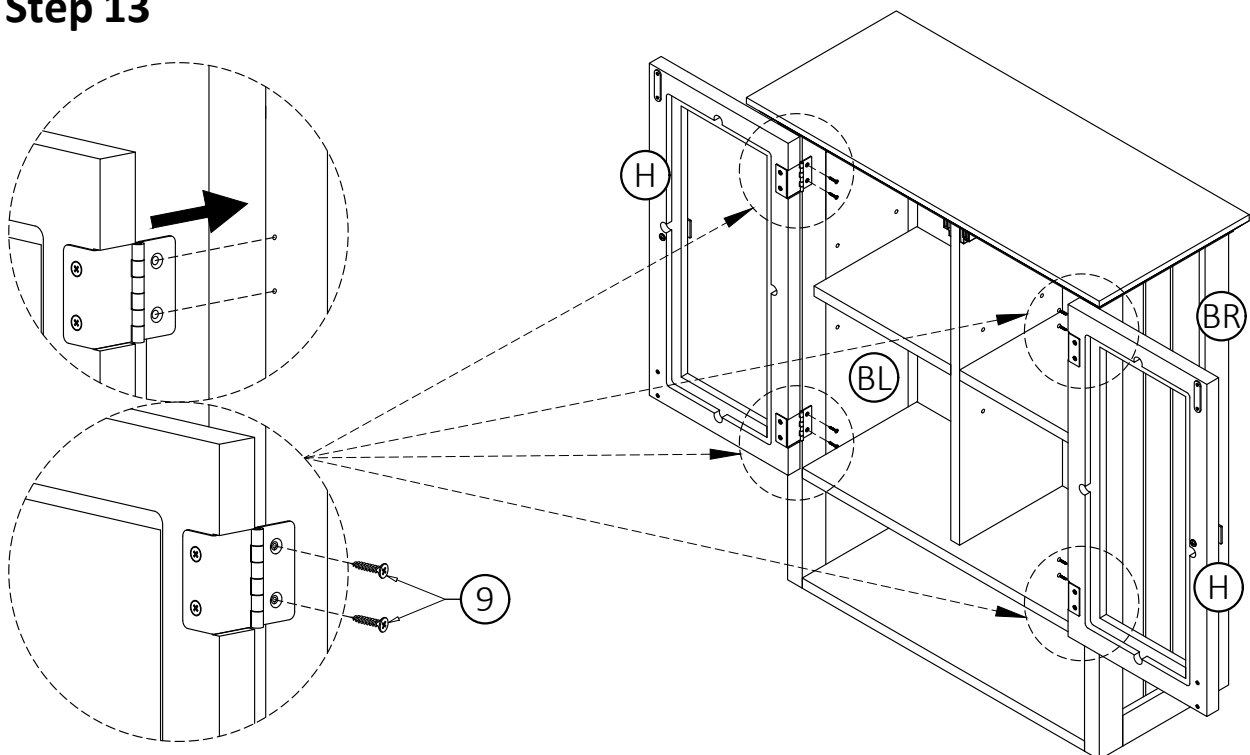


## Step 12



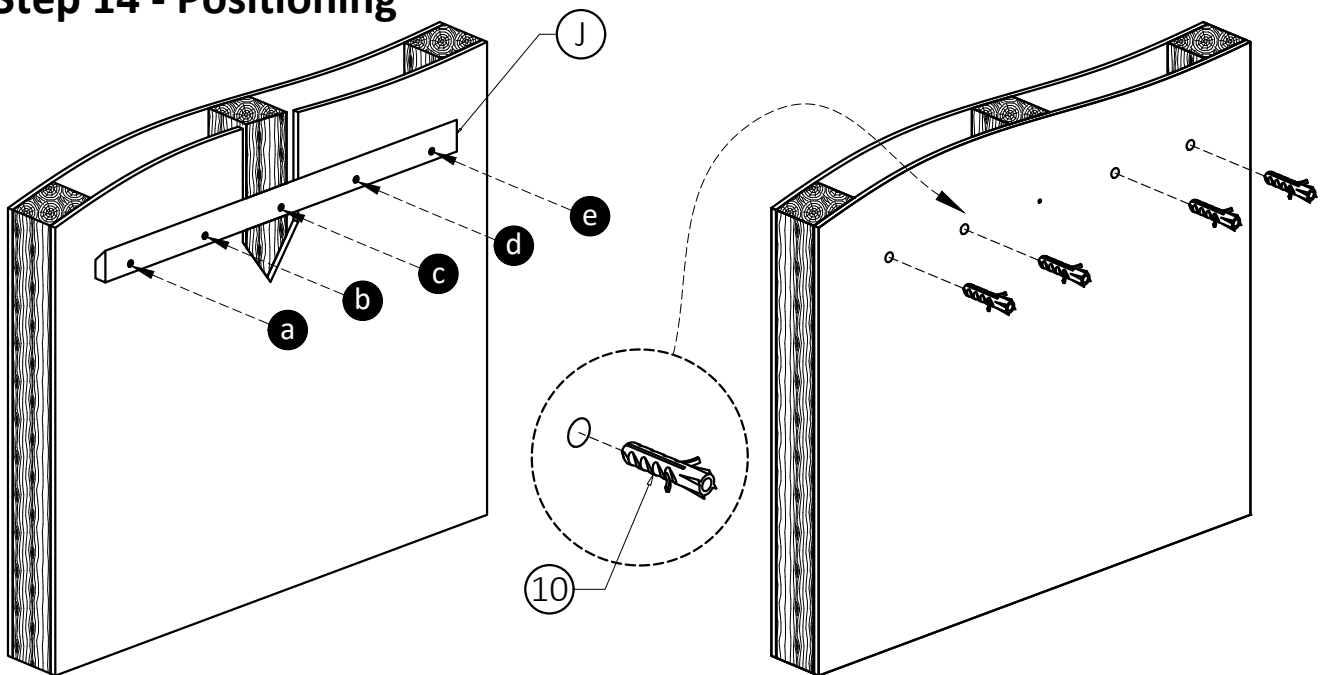
1. Attach Hinge (3) to Doors (H) using Phillips Screws (9) into pre-drilled holes on Doors (H).
2. Attach Magnet Plates (4) to top corner of Doors (H) using Phillips Screws (9) into pre-drilled holes on Doors (H).
3. Use Phillips screwdriver to attach Handle (5) to Doors (H).

## Step 13



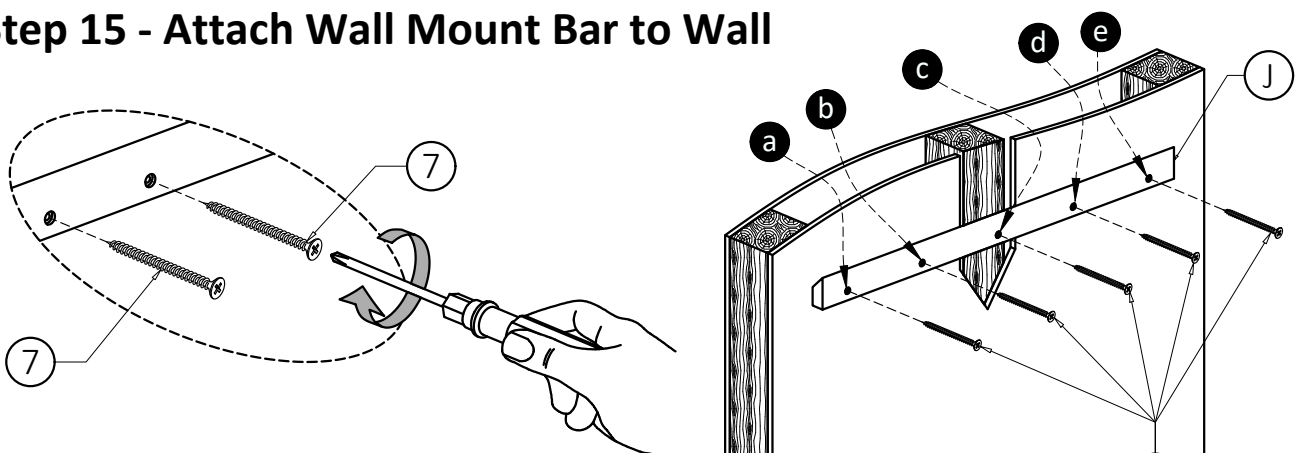
1. Attach Hinge on Doors (H) to Sides (BL, BR) using Phillips Screws (9) into pre-drilled holes on Sides (BL, BR).
2. Use Phillips screwdriver to secure screws. Do not over-tighten.

## Step 14 - Positioning



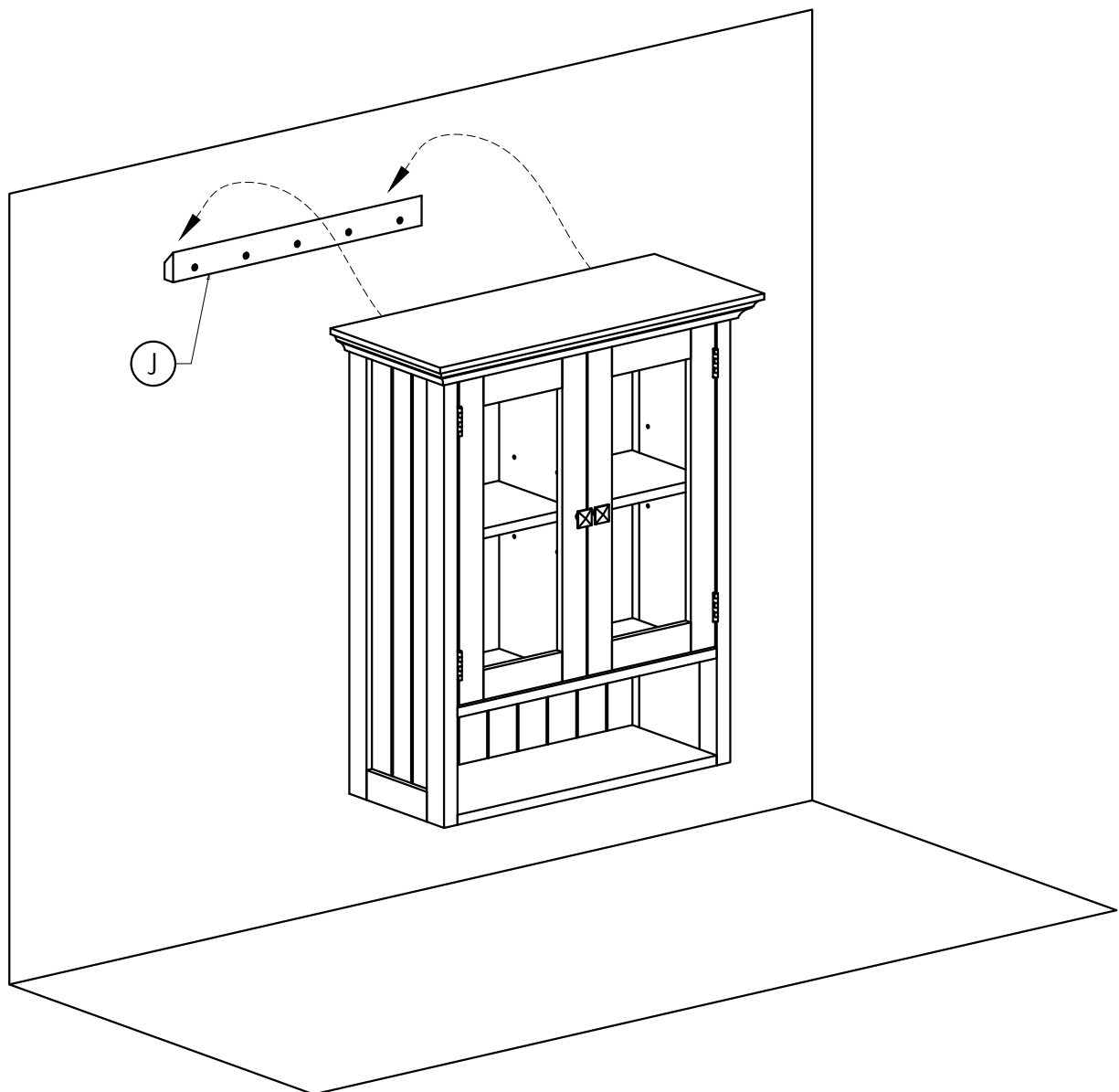
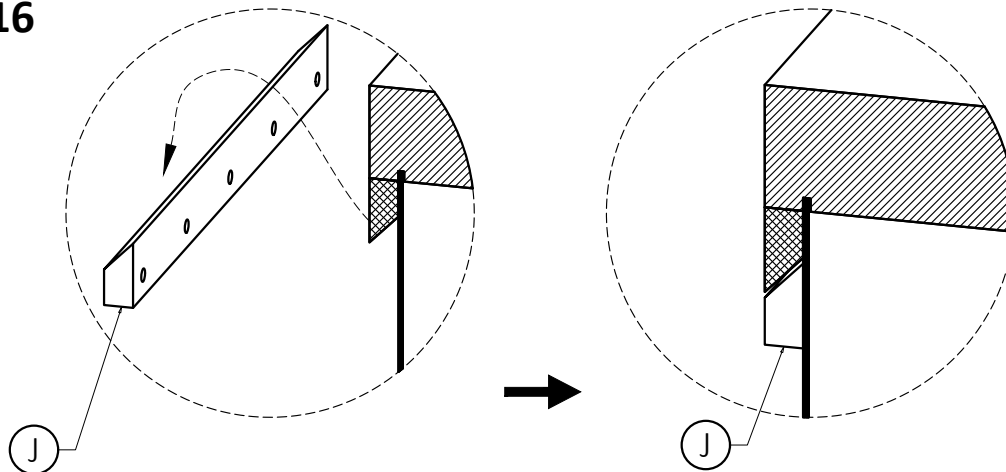
1. Determine the location for the unit on the wall. The Top (A) should be approximately 1 ¼" above the top of the Wall Mount Bar (J) when mounted.
2. Place the Wall Mount Bar (J) at the predetermined height. Use a level to ensure that it is straight. The flat side of Wall Mount Bar (J) should face outward away from the wall. Hole (c) should align with your studs. Carefully mark the position of each hole using the tip of the Phillips Screw (7) .
3. Install four Wall Anchors (10) to positions (a),(b),(d),(e) using a Phillips screwdriver. Anchors are self-tapping and do not need pre-drilled holes.
4. Use your drill to create 1 hole 0.15" diameter x 2" deep at position (c) .

## Step 15 - Attach Wall Mount Bar to Wall



1. Screw one Phillip Screw (7) through the raised side of the Wall Mount Bar (J) at position (c).
2. Screw four Phillip Screws (7) through the raised side of the Wall Mount Bar (J) at positions (a),(b),(d),(e) where Wall Anchors (10) were placed.
3. Tighten all screws. Do not over tighten.

## Step 16



1. Align the top of the Wall Mount Bar (J) with the bottom of the angled bracket on the back of the Cabinet.
2. Gently slide the Cabinet down on to the Wall Mount Bar (J).