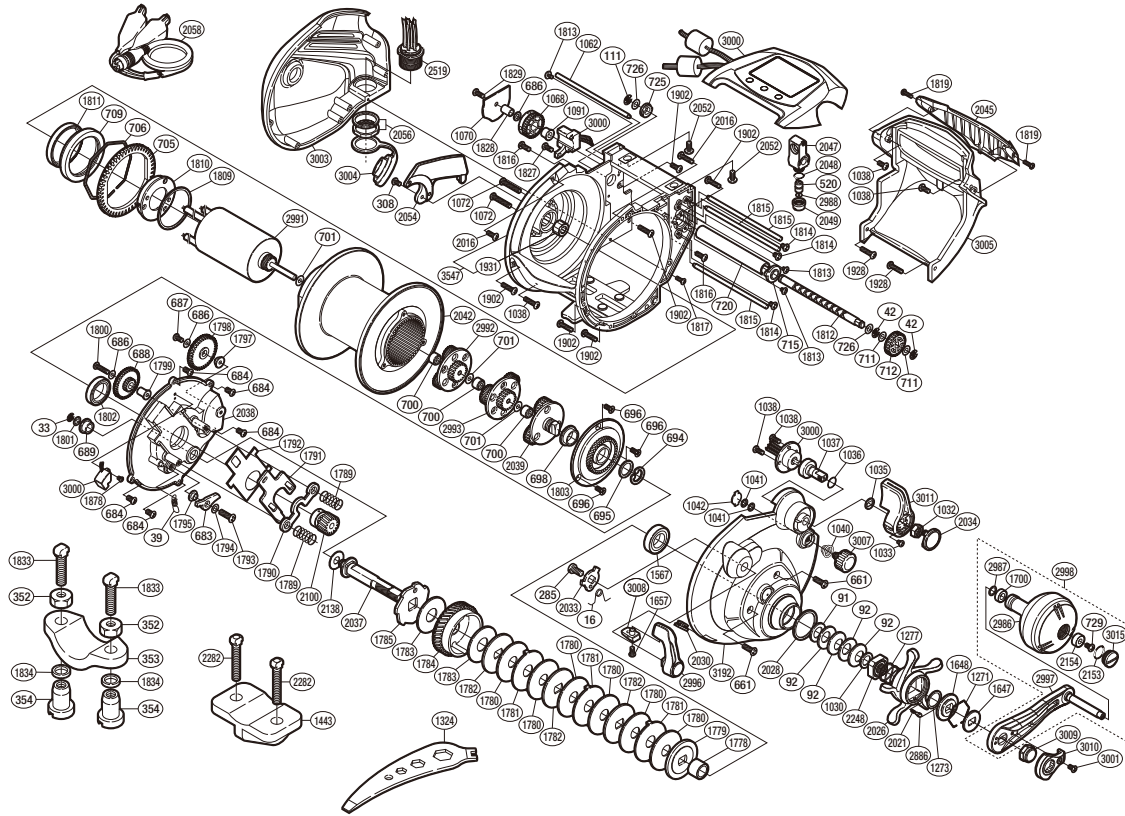


SHIMANO

BeastMaster

BM-9000



(51RG579000X)

#	Part No.	Description	#	Part No.	Description	#	Part No.	Description
0016	10JYX	Clutch Spring	1647	1070M	Drive Shaft Shield	2039	10MM7	Reduction Gear Plate B Assembly
0033	10SNE	E Lock	1648	10J27	Star Drag Click Plate	2045	10B3M	Level Wind Cover Sticker
0039	10CBS	Anti-Reverse Pawl Spring	1657	10LSQ	Screw	2047	10P46	Line Guide Assembly
0042	10SNE	E Lock	1700	104UJ	Handle Knob Bushing B	2048	10BWO	O Ring
0091	104L5	Bearing Thrust Washer	1778	10BT6	Drive Shaft Sleeve	2049	10FJD	Pawl Cap
0092	1052E	Drag Spring Washer	1779	10D4H	Pressure Plate	2052	103HE	Screw
0111	105NJ	E Lock	1780	10L86	Drag Washer	2054	10Q2X	Motor Holder B
0285	10F8M	Screw	1781	10LBB	Eared Washer	2056	10BGS	Socket Nut Set
0308	10LSK	Screw	1782	10KZW	Key Washer	2100	1066Y	Pinion Gear Assembly
0520	10FFZ	Line Guide Pawl	1783	10CKR	Drag Washer	2138	10GN2	Washer
0661	10M70	Screw	1784	10Q9X	Drive Gear	2153	10LAB	O Ring
0683	10PFV	Anti-Reverse Pawl	1785	10A2H	Anti-Reverse Ratchet	2154	10EU0	Handle Knob Bushing A
0684	10M6K	Screw	1789	104BV	Yoke Spring	2248	10QY2	Star Drag Nut
0686	105EN	Washer	1790	1047Y	Yoke	2519	100XP	Socket Set
0687	103GP	Screw	1791	1094R	Clutch Plate	2886	10B27	Click Pin
0688	10PSZ	Worm Idle Gear B	1792	10AYE	Clutch Plate Washer	2986	10RH4	Handle Knob Assembly
0689	10BQ3	Drive Shaft Bushing	1793	10MG8	Screw	2987	104FH	Washer
0694	10S58	C Lock	1794	10GCV	Washer	2988	10RR9	Washer
0695	109RA	Washer	1795	10PKN	Anti-Reverse Pawl Cover	2991	10RH8	Motor Assembly
0696	10ML5	Screw	1797	10PYU	Worm Idle Gear Bushing A	2992	10T7A	Reduction Gear Plate A Assembly
0698	10MGW	Plate Bushing (Large)	1798	10MCN	Worm Idle Gear A	2993	100FY	Reduction Gear Plate C Assembly
0700	10MCW	Plate Bushing (Small)	1799	10PYX	Worm Idle Gear Bushing B	2996	10T78	Clutch Lever Unit
0701	109R9	Washer	1800	103LZ	Screw	2997	10RG7	Handle Shank Assembly
0705	10CUW	Counter Gear A	1801	10J8D	Washer	2998	10RFG	Handle Assembly
0706	106PU	Gear Retainer	1802	108PG	Ball Bearing	3000	10THS	Counter Unit Assembly
0709	10PWQ	Bearing Rim	1803	10HSK	Spool Plate	3001	10R1Q	Screw
0711	105KF	Washer	1809	10GD3	Washer	3003	10REZ	Left Side Plate
0712	10N99	Worm Gear	1810	10F1R	Motor Holder	3004	10T2G	Socket Cap
0715	104T6	Worm Bushing A	1811	104PK	Ball Bearing	3005	10EA1	Level Wind Protector
0720	10NMQ	Level Wind Guard	1812	10586	Worm Shaft	3007	10E9Y	Cast Control Cap
0725	104SX	Worm Bushing B	1813	10MPG	Screw	3008	101AQ	Clutch Lever Protector
0726	109RN	Washer	1814	103L1	Screw	3009	10RHS	Handle Nut
0729	103E9	Screw	1815	10PCN	Stabilizer Bar	3010	100F6	Handle Nut Plate
1030	10BR2	Star Drag Washer	1816	10M2A	Screw	3011	10RF1	Lever Switch
1032	10NAN	Lever Switch Nut	1817	103NP	Screw	3015	10TFF	Handle Knob Seal
1033	103N3	Screw	1819	10MQ2	Screw	3192	10T00	Right Side Plate Assembly
1035	10NAQ	Key Washer	1827	103GQ	Screw	3547	100T0	Frame Assembly
1036	10NAR	O Ring	1828	106PY	Counter Gear Bushing B			
1037	10N77	Lever Insert Shaft	1829	103LK	Screw			
1038	10LZF	Screw	1878	10MT4	Screw	0352	105N9	Rod Clamp Nut B (Accessory)
1040	10BRG	Spool Tension Spring	1902	10LSZ	Screw	0353	10AR5	Rod Clamp (Accessory)
1041	105SB	Cs Lock	1928	10M32	Screw	0354	1046P	Rod Clamp Nut A (Accessory)
1042	1085L	Cast Control Spacer	1931	10F5G	Roller Clutch Bearing	1443	10J9P	Rod Clamp (Accessory)
1062	10PCL	Stabilizer Bar A	2016	10LT4	Screw	1833	10A79	Rod Clamp Bolt (Accessory)
1068	10MZL	Counter Gear B	2021	10988	Click Spring	1834	10GA8	Rod Clamp Nut Washer (Accessory)
1070	10QC8	Cord Cover	2026	10B82	Star Drag	2042	1030B	Spool Assembly(With Bearing) (Accessory)
1072	10MCO	Screw	2028	10G6V	Star Drag Spacer	2282	101UW	Rod Clamp Bolt (Accessory)
1091	106PW	Counter Gear Bushing	2030	106NV	Line Clip			
1271	10KXX	Click Plate Retainer	2033	10871	Clutch Cam Assembly			
1273	10G6M	Washer	2034	10N72	Lever Switch Sticker	1324	10MJ6	Wrench (Accessory)
1277	10HZ2	Star Drag Spring	2037	105D3	Drive Shaft	2058	10FBU	Cable (Accessory)
1567	10KXA	Ball Bearing	2038	105WW	Set Plate	3193	10CW0	Line Picker (Accessory)

Please note that the number of adjusting washers may not be the same as shown in the exploded views. (Adjustment will vary with each individual product.)