

BOSS[®]
AUDIO SYSTEMS



XP4/XP6

USER'S MANUAL

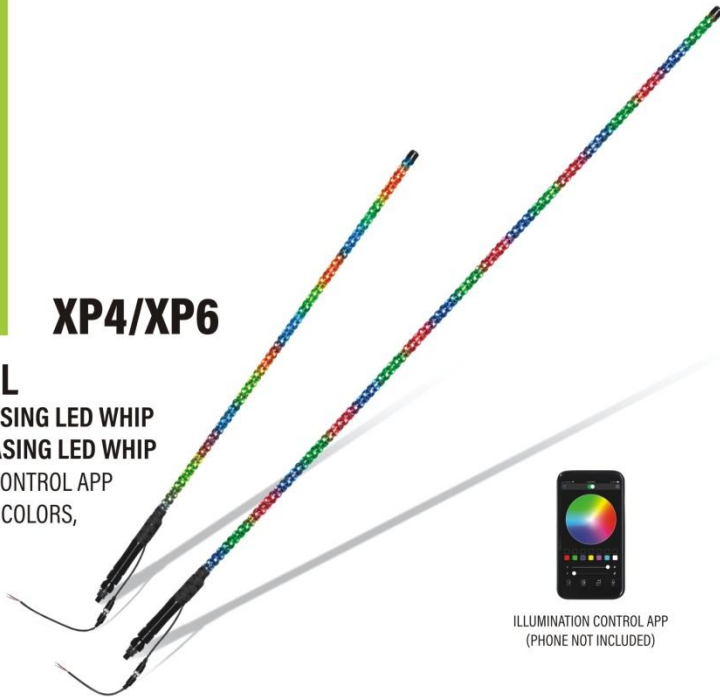
XP6 - 72" 360° RGB CHASING LED WHIP

XP4 - 48" 360° RGB CHASING LED WHIP

FEATURES ILLUMINATION CONTROL APP

FOR FULLY CUSTOMIZABLE COLORS,

PATTERNS, AND EFFECTS



ILLUMINATION CONTROL APP
(PHONE NOT INCLUDED)

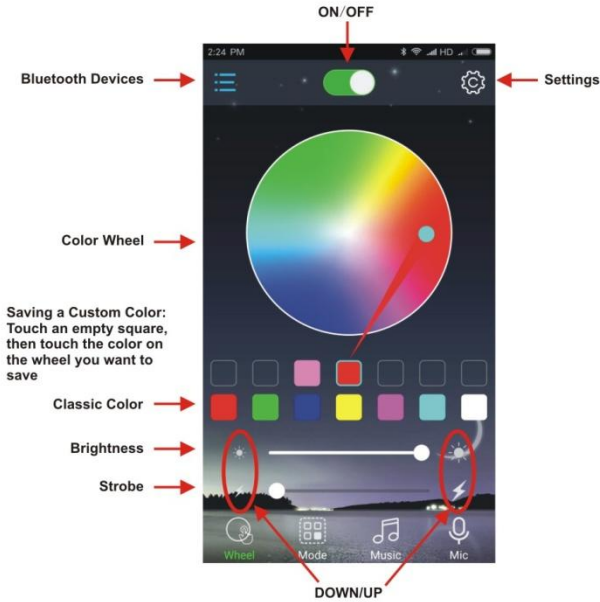
Get the APP



SCAN FOR APP

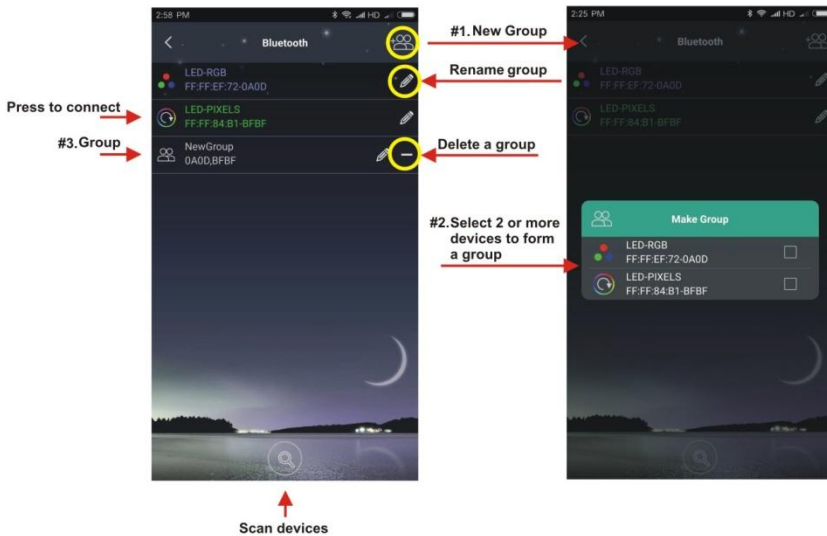
Or go to the Apple App Store
or Google Play Store to download the app "BLEDIM2"

Main Interface



2

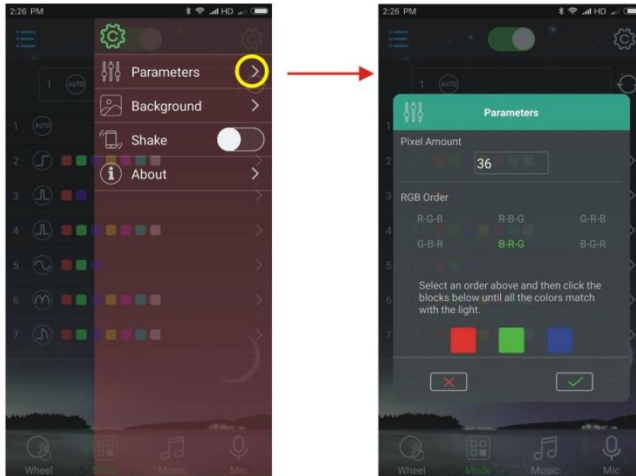
Connect to device or Group



3

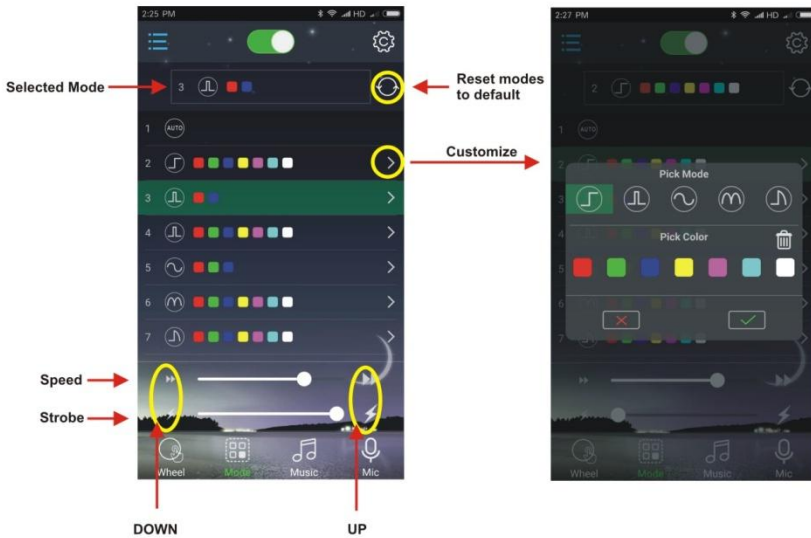
Parameters Settings

The parameters settings is only for LED-PIXELS,not for LED-RGB



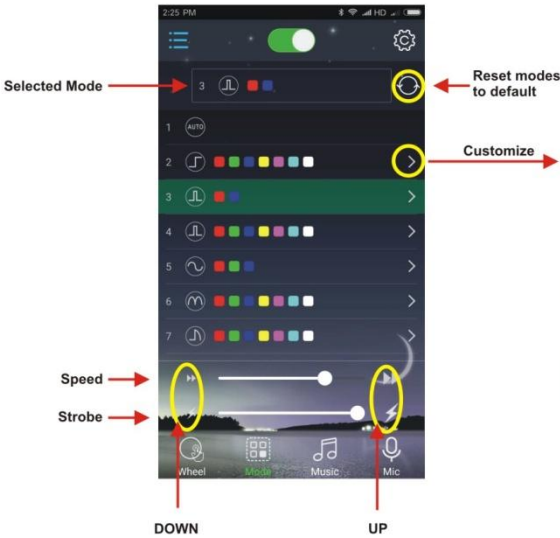
4

Mode Customization for LED-RGB devices

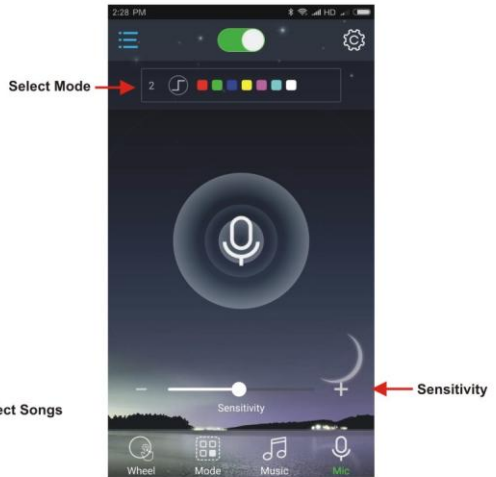
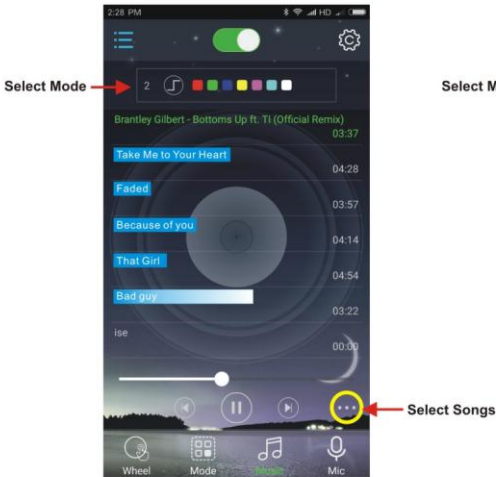


5

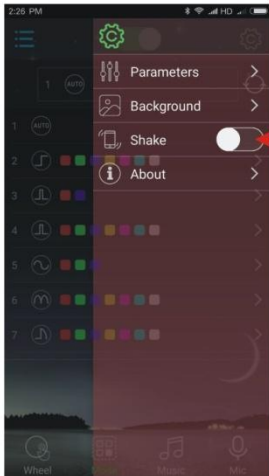
Mode Customization for LED-PIXELS devices



Music and Microphone Control



Shake Feature



Switch ON to enable shake

When Switched ON:

- 1.Wheel Page : Shake for a random color
- 2.Mode Page : Shake for a random mode
- 3.Music Page : Shake for a random mode
- 4.Mic Page : Shake for a random mode

Troubleshooting



#1.Top section of LEDs are not bright



#2.Top section of LEDs partially different color.
Example: top section white,lower section blue.



Solution for #1, #2: Reference user manual and adjust Parameter Settings.
IF XP4, set to 80 as below photo shows:



IF XP6, set to 125 as below photo shows:



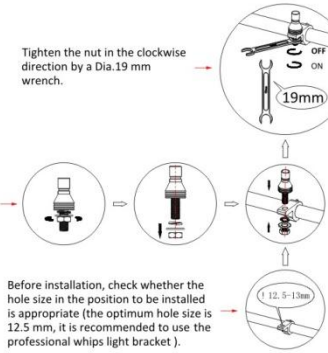
#3.LED whip RGB color sequence dose not match BLEDIM2 APP.
RGB color sequence is not in sync.
Solution:Adjust APP to match the photo below.



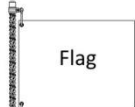
LED WHIPS INSTALLATION MANUAL

1. Screw out the nut of the quick release base in the counterclockwise direction.

2. Place the quick release base screw in the position hole that needs to be installed in order.



Use the handle of the portable connected light whips to push the moving workpiece up (1), and then pull the Quick release base out (2).



Align Arrows before connecting wires, and then tighten the wire connector nut clockwise.

Unscrew the nut on the data line connector counterclockwise.

Connect the power wire to the ACC BOX (DC 12V), and red wire connect the positive pole (+) of the ACC BOX, black wire connect the negative (-) of the ACC BOX.



BOSS Audio Systems
 3451 Lunar Court • Oxnard, CA 93030
www.bossaudio.com
 805-751-4853 Customer Service
 Tech Support: www.bossaudio.com/support

