

# Maxi-Cosi® Coral XP Inner Carrier Stroller Adapter

Connects to Maxi-Cosi  
Adorra™ Zelia Max™ Zelia™  
Lila™ Tayla™ Maxi-Taxi™  
Strollers

Fits the Maxi-Cosi Coral XP inner carrier. New car seats, carriers, and strollers may become available over time. Visit our website for the latest list of compatible products.

Follow these instructions to ensure safe and secure use. Keep these instructions for future use.

Please refer to your car seat instruction manual for any information about stroller use.

Please read and review your stroller instruction manual for important information about installing a car seat on your stroller.

If you have questions, visit [maxicosi.com](http://maxicosi.com) or call (800) 951-4113 to speak with a Maxi-Cosi representative.

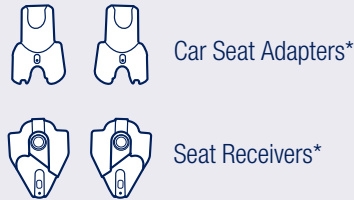


## Attaching Inner Carrier Stroller Adapter & Inner Carrier

### Before You Begin

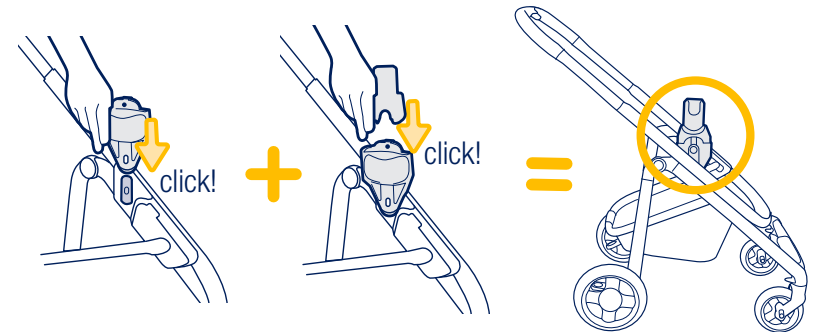
First, engage the brakes on the stroller.

You will need the car seat adapters and/or the seat receivers that were sold with your stroller.

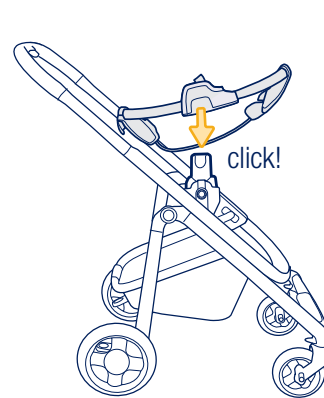


\*The car seat adapters and/or seat receivers may be different than those illustrated here and your stroller may not have seat receivers.

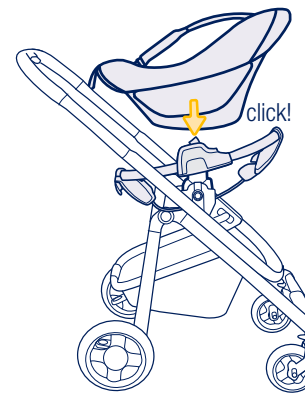
Refer to stroller instruction manual on how to remove car seat adapters and/or seat receivers from stroller frame.



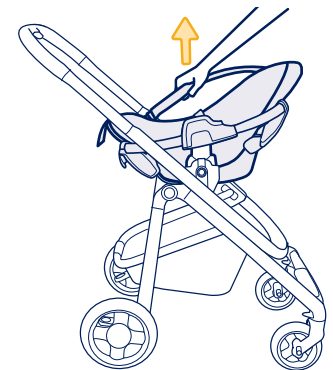
**1** Install the seat receivers\* and/or car seat adapters\* to your stroller frame as shown in the stroller instruction manual.



**2** Attach the inner carrier adapter to the car seat adapters.

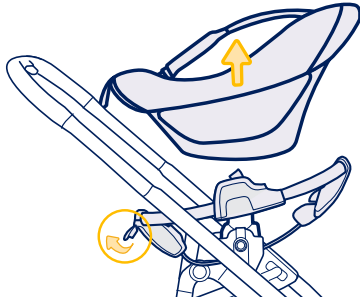


**3** Attach the inner carrier to the inner carrier adapter. **ONLY** install the inner carrier rear-facing.



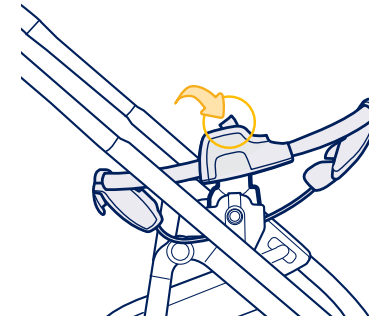
**4** Lift the inner carrier up to check if it is securely attached.

## Removing Inner Carrier & Inner Carrier Stroller Adapter



### To Release Inner Carrier from Adapter

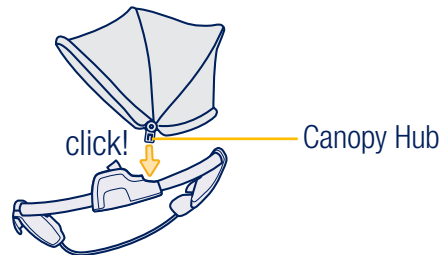
Pull the lever at the foot of the adapter up.  
Then lift the inner carrier up to remove it from the adapter.



### To Release Adapter from Stroller

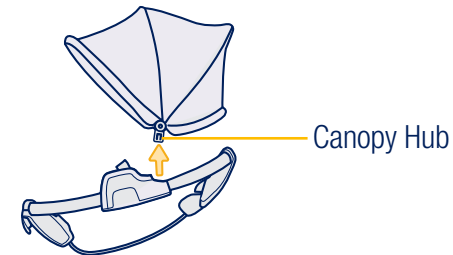
Press the buttons on each side of the adapter.  
Then lift the adapter up to remove it from the stroller frame.

## Installing & Removing Canopy from Inner Carrier Stroller Adapter



### To Attach Canopy to Adapter

Align the canopy hubs with the slots on each side of the adapter.  
Then push them down into the slots.



### To Remove Canopy from Adapter

Pull both of the canopy hubs up to remove the canopy from the adapter.