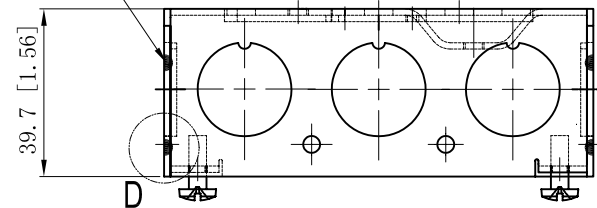
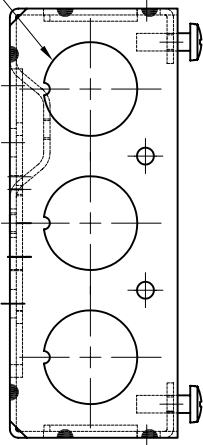


SIDES	BOTTOM
12 1/2" KNOCKOUTS	2 1/2" KNOCKOUTS
	2 3/4" KNOCKOUTS
	1 Ground Hump
2 PCS 8-32×1/2 Screws Installed	
Material: Steel-0.0625"-G60 Galvanized	

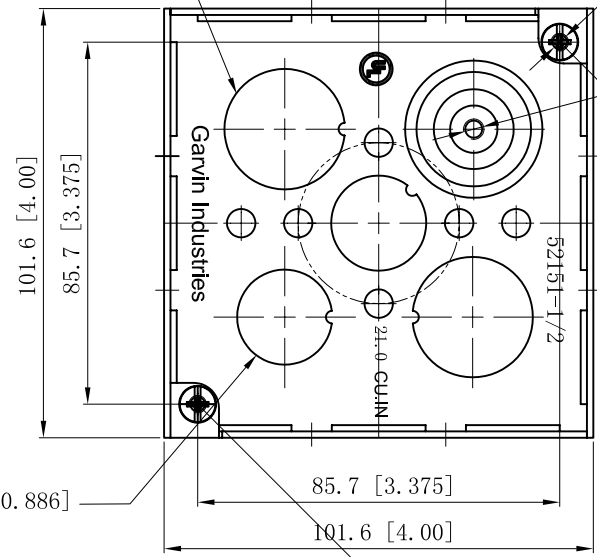
12 PLACES SPOT WELDING



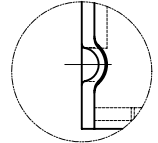
12 1/2" KNOCKOUTS  $\phi=22.50$  [ $\phi=0.886$ ]



2 3/4" KNOCKOUTS  $\phi=28.50$  [ $\phi=1.122$ ]



2 1/2" KNOCKOUTS  $\phi=22.50$  [ $\phi=0.886$ ]



WELDING STYLE DETAIL VIEW D

This data sheet is for reference only. GARVIN INDUSTRIES reserves the right to make changes to the design without prior notice.

DESCRIPTION
TRADE REFERENCE TERMS

STANDARD PACKING
50 PCS

<b>GARVIN INDUSTRIES</b>		
TITLE 4" SQUARE BOXES 1-1/2" DEEP		
SIZE A4	DWG NO. 52151-1/2	REV A
DATA SHEET		